

VANDENS SIURBLIAI, UAB  
Įmonės kodas 144708571  
PVM kodas LT447085716  
Girulių g. 24, Šiauliai  
LT78138, Lietuva



## **MECHANINIS SANDARIKLIS TSMG1-32 (G60) SIC/SIC/VIT/SS304 - 91.11 €**

### **Gamintojas**

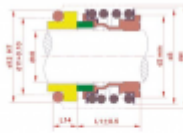
---



### **APRAŠYMAS:**

---

Mechaninis sandariklis modelis MG1 gali pakeisti „AESSEAL B02“, „BURGMANN MG1“, „FLOWSERVE 190“ ir „MTU FG1“, kuris yra plačiai naudojamas „Hecker HN 410SU“ ir kitų rūšių siurbliams. Įprastas medžiagų derinys apima: anglis / keramika / nbr / ss304, anglies dervos / keramika / nbr / ss304 /, sic / sic / nbr / ss304, tc / tc / nbr / ss316 ir pan. Mechaninis sandariklis modelis MG12 gali pakeisti „AESSEAL B012“, „BURGMANN MG12“, „FLOWSERVE 192“ ir „MTU FG2“, kuris yra plačiai naudojamas „Hecker HN 410KU“ ir kitų rūšių siurbliams. Įprastas medžiagų derinys apima: anglis / keramika / nbr / ss304, anglies dervos / keramika / nbr / ss304 /, sic / sic / nbr / ss304, tc / tc / nbr / ss316 ir pan. TS MG1 (TSG) TS MG12 (TSG2) Sukamasis žiedas (anglis / SiC / TC) Stacionarus žiedas (keramikinis / SiC / TC) Antrinis sandariklis (NBR / EPDM / VITON) Spyruoklė ir kitos dalys (SUS304 / SUS316) TS MG1 TS MG12 serijos mechaninių sandariklių veikimo ribos: Slėgis: ≤1,2MPa Greitis: ≤10m / s Temperatūra: -20 °C ~ + 120 °C Gamintojas:



Sąrašo numeras (šimtu)	Tūris (l)				
	1	2	3	4	5
1	4	17,0	68,0	272,0	1088,0
2	10	39,0	156,0	624,0	2496,0
3	16	65,0	260,0	1040,0	4160,0
4	22	91,0	364,0	1456,0	5824,0
5	28	117,0	468,0	1872,0	7488,0
6	34	143,0	572,0	2288,0	9152,0
7	40	169,0	676,0	2704,0	10816,0
8	46	195,0	780,0	3120,0	12480,0
9	52	221,0	884,0	3536,0	14144,0
10	58	247,0	988,0	3952,0	15808,0
11	64	273,0	1092,0	4368,0	17472,0
12	70	299,0	1196,0	4784,0	19136,0
13	76	325,0	1300,0	5200,0	20800,0
14	82	351,0	1404,0	5616,0	22464,0
15	88	377,0	1508,0	6032,0	24128,0
16	94	403,0	1612,0	6448,0	25792,0
17	100	429,0	1716,0	6864,0	27456,0
18	106	455,0	1820,0	7280,0	29120,0
19	112	481,0	1924,0	7696,0	30784,0
20	118	507,0	2028,0	8112,0	32448,0
21	124	533,0	2132,0	8528,0	34112,0
22	130	559,0	2236,0	8944,0	35776,0
23	136	585,0	2340,0	9360,0	37440,0
24	142	611,0	2444,0	9776,0	39104,0
25	148	637,0	2548,0	10192,0	40768,0
26	154	663,0	2652,0	10608,0	42432,0
27	160	689,0	2756,0	11024,0	44096,0
28	166	715,0	2860,0	11440,0	45760,0
29	172	741,0	2964,0	11856,0	47424,0
30	178	767,0	3068,0	12272,0	49088,0
31	184	793,0	3172,0	12688,0	50752,0
32	190	819,0	3276,0	13104,0	52416,0
33	196	845,0	3380,0	13520,0	54080,0
34	202	871,0	3484,0	13936,0	55744,0
35	208	897,0	3588,0	14352,0	57408,0
36	214	923,0	3692,0	14768,0	59072,0
37	220	949,0	3796,0	15184,0	60736,0
38	226	975,0	3900,0	15600,0	62400,0
39	232	1001,0	4004,0	16016,0	64064,0
40	238	1027,0	4108,0	16432,0	65728,0
41	244	1053,0	4212,0	16848,0	67392,0
42	250	1079,0	4316,0	17264,0	69056,0
43	256	1105,0	4420,0	17680,0	70720,0
44	262	1131,0	4524,0	18096,0	72384,0
45	268	1157,0	4628,0	18512,0	74048,0
46	274	1183,0	4732,0	18928,0	75712,0
47	280	1209,0	4836,0	19344,0	77376,0
48	286	1235,0	4940,0	19760,0	79040,0
49	292	1261,0	5044,0	20176,0	80704,0
50	298	1287,0	5148,0	20592,0	82368,0
51	304	1313,0	5252,0	21008,0	84032,0
52	310	1339,0	5356,0	21424,0	85696,0
53	316	1365,0	5460,0	21840,0	87360,0
54	322	1391,0	5564,0	22256,0	89024,0
55	328	1417,0	5668,0	22672,0	90688,0
56	334	1443,0	5772,0	23088,0	92352,0
57	340	1469,0	5876,0	23504,0	94016,0
58	346	1495,0	5980,0	23920,0	95680,0
59	352	1521,0	6084,0	24336,0	97344,0
60	358	1547,0	6188,0	24752,0	99008,0
61	364	1573,0	6292,0	25168,0	100672,0
62	370	1599,0	6396,0	25584,0	102336,0
63	376	1625,0	6500,0	26000,0	104000,0
64	382	1651,0	6604,0	26416,0	105664,0
65	388	1677,0	6708,0	26832,0	107328,0
66	394	1703,0	6812,0	27248,0	108992,0
67	400	1729,0	6916,0	27664,0	110656,0
68	406	1755,0	7020,0	28080,0	112320,0
69	412	1781,0	7124,0	28496,0	113984,0
70	418	1807,0	7228,0	28912,0	115648,0
71	424	1833,0	7332,0	29328,0	117312,0
72	430	1859,0	7436,0	29744,0	118976,0
73	436	1885,0	7540,0	30160,0	120640,0
74	442	1911,0	7644,0	30576,0	122304,0
75	448	1937,0	7748,0	30992,0	123968,0
76	454	1963,0	7852,0	31408,0	125632,0
77	460	1989,0	7956,0	31824,0	127296,0
78	466	2015,0	8060,0	32240,0	128960,0
79	472	2041,0	8164,0	32656,0	130624,0
80	478	2067,0	8268,0	33072,0	132288,0
81	484	2093,0	8372,0	33488,0	133952,0
82	490	2119,0	8476,0	33904,0	135616,0
83	496	2145,0	8580,0	34320,0	137280,0
84	502	2171,0	8684,0	34736,0	138944,0
85	508	2197,0	8788,0	35152,0	140608,0
86	514	2223,0	8892,0	35568,0	142272,0
87	520	2249,0	8996,0	35984,0	143936,0
88	526	2275,0	9100,0	36400,0	145600,0
89	532	2301,0	9204,0	36816,0	147264,0
90	538	2327,0	9308,0	37232,0	148928,0
91	544	2353,0	9412,0	37648,0	150592,0
92	550	2379,0	9516,0	38064,0	152256,0
93	556	2405,0	9620,0	38480,0	153920,0
94	562	2431,0	9724,0	38896,0	155584,0
95	568	2457,0	9828,0	39312,0	157248,0
96	574	2483,0	9932,0	39728,0	158912,0
97	580	2509,0	10036,0	40144,0	160576,0
98	586	2535,0	10140,0	40560,0	162240,0
99	592	2561,0	10244,0	40976,0	163904,0
100	598	2587,0	10348,0	41392,0	165568,0

[TRISUN](#) Sandariklio matmenys pateikti lentelėje:

## TS MG1(TSG) TS MG12(TSG2)

技术参数:

压力:  $\leq 1.2\text{MPa}$

线速度:  $\leq 10\text{m/s}$

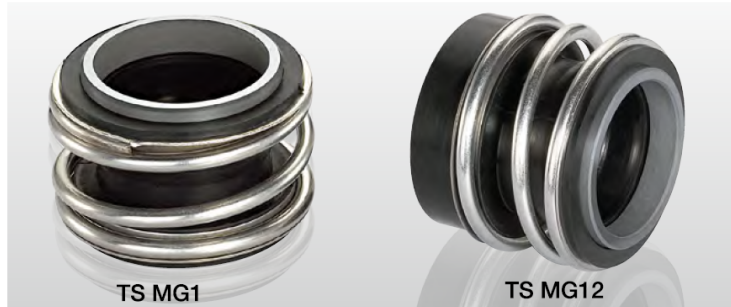
温度:  $-20^{\circ}\text{C} \sim +120^{\circ}\text{C}$

### Operating Limits

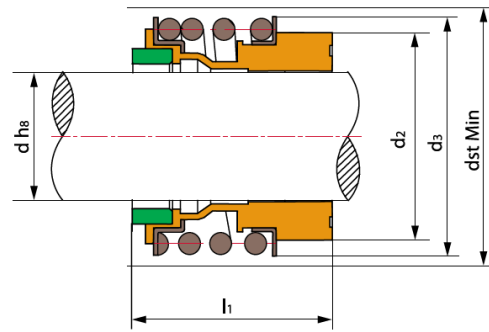
Pressure:  $\leq 1.2\text{MPa}$

Speed:  $\leq 10\text{m/s}$

Temperature:  $-20^{\circ}\text{C} \sim +120^{\circ}\text{C}$



- 动环(石墨/碳化硅/碳化钨)
- 静环(陶瓷/碳化硅/碳化钨)
- 辅助密封(丁腈胶/三元乙丙胶/氟胶)
- 弹簧及其它金属件(不锈钢)



- Rotary Ring (Carbon/SiC/TC)
- Stationary Ring (Ceramic/SiC/TC)
- Secondary Seal (NBR/EPDM/VITON)
- Spring & Other Parts (SUS304/SUS316)

TS MG1					
Seal size d(mm)	d	d <sub>2</sub>	d <sub>3</sub>	d <sub>st</sub>	l <sub>1</sub>
8	8	17.5	19.0	23	12.5
10	10	20.5	22.5	24	14.5
12	12	22.5	25.0	26	15.0
14	14	26.5	28.5	30	17.0
15	15	26.5	28.5	30	17.0
16	16	26.5	28.5	30	17.0
18	18	29.0	32.0	33	19.5
19	19	33.0	37.0	38	21.5
20	20	33.0	37.0	38	21.5
22	22	33.0	37.0	38	21.5
24	24	38.0	42.5	44	22.5
25	25	38.0	42.5	44	23.0
28	28	44.0	49.0	50	26.5
30	30	44.0	49.0	50	26.5
32	32	46.0	53.5	55	27.5
33	33	46.0	53.5	55	27.5
35	35	50.0	57.0	59	28.5
38	38	53.0	59.0	61	30.0
40	40	55.0	62.0	64	30.0
42	42	58.0	65.5	67	30.0
43	43	58.0	65.5	67	30.0
45	45	60.0	68.0	70	30.0
48	48	63.0	70.5	74	30.5
50	50	65.0	74.0	77	30.5
53	53	70.0	78.5	81	33.0
55	55	72.0	81.0	83	35.0
58	58	75.0	85.5	88	37.0
60	60	79.0	88.5	91	38.0
65	65	84.0	93.5	96	40.0
68	68	88.0	96.5	100	40.0
70	70	90.0	99.5	103	40.0
75	75	95.0	107.0	110	40.0
80	80	100.0	112.0	116	40.0
85	85	107.0	120.0	124	41.0
90	90	114.0	127.0	131	45.0
95	95	119.0	132.0	136	46.0
100	100	124.0	137.0	140	47.0

TS MG12					
Seal size d(mm)	d	d <sub>2</sub>	d <sub>st</sub>	d <sub>3</sub>	l <sub>1</sub>
10	10	20.5	24	22.5	25.9
12	12	22.5	26	25.0	25.9
14	14	26.5	30	28.5	28.4
16	16	26.5	30	28.5	28.4
18	18	29.0	33	32.0	30.0
20	20	33.0	38	37.0	30.0
22	22	33.0	38	37.0	30.0
24	24	38.0	44	42.5	32.5
25	25	38.0	44	42.5	32.5
28	28	44.0	50	49.0	35.0
30	30	44.0	50	49.0	35.0
32	32	46.0	55	53.5	35.0
33	33	46.0	55	53.5	35.0
35	35	50.0	59	57.0	35.0
38	38	53.0	61	59.0	36.0
40	40	55.0	64	62.0	36.0
43	43	58.0	67	65.5	36.0
45	45	60.0	70	68.0	36.0
48	48	63.0	74	70.5	36.0
50	50	65.0	77	74.0	38.0
53	53	70.0	81	78.5	36.5
55	55	72.0	83	81.0	36.5
58	58	75.0	88	85.5	41.5
60	60	79.0	91	88.5	41.5
65	65	84.0	96	93.5	41.5
68	68	88.0	100	96.5	41.2
70	70	90.0	103	99.5	48.7
75	75	95.0	110	107.0	48.7
80	80	100.0	116	112.0	48.0
85	85	107.0	124	120.0	46.0
90	90	114.0	131	127.0	51.0
95	95	119.0	136	132.0	51.0
100	100	124.0	140	137.0	51.0