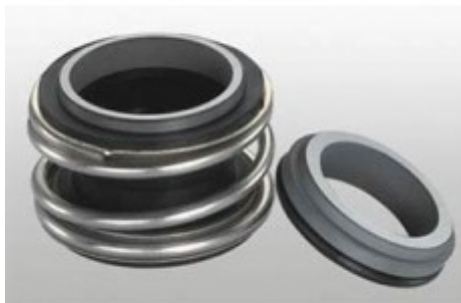


VANDENS SIURBLIAI, UAB
Įmonės kodas 144708571
PVM kodas LT447085716
Girulių g. 24, Šiauliai
LT78138, Lietuva



MECHANINIS SANDARIKLIS TSMG1-19 (G4) SIC/TC/VIT/SS304 - 112.14 €

Gamintojas



APRAŠYMAS:

Mechaninis sandariklis modelis MG1 gali pakeisti „AESSEAL B02“, „BURGMANN MG1“, „FLOWSERVE 190“ ir „MTU FG1“, kuris yra plačiai naudojamas „Hecker HN 410SU“ ir kitų rūšių siurbliams. Įprastas medžiagų derinys apima: anglis / keramika / nbr / ss304, anglies dervos / keramika / nbr / ss304 /, sic / sic / nbr / ss304, tc / tc / nbr / ss316 ir pan. Mechaninis sandariklis modelis MG12 gali pakeisti „AESSEAL B012“, „BURGMANN MG12“, „FLOWSERVE 192“ ir „MTU FG2“, kuris yra plačiai naudojamas „Hecker HN 410KU“ ir kitų rūšių siurbliams. Įprastas medžiagų derinys apima: anglis / keramika / nbr / ss304, anglies dervos / keramika / nbr / ss304 /, sic / sic / nbr / ss304, tc / tc / nbr / ss316 ir pan. TS MG1 (TSG) TS MG12 (TSG2) Sukamasis žiedas (anglis / SiC / TC) Stacionarus žiedas (keramikinis / SiC / TC) Antrinis sandariklis (NBR / EPDM / VITON) Spyruoklė ir kitos dalys (SUS304 / SUS316) TS MG1 TS MG12 serijos mechaninių sandariklių veikimo ribos: Slėgis: ≤1,2MPa Greitis: ≤10m / s Temperatūra: -20 °C ~ + 120 °C Gamintojas:



Sąrašo numeras (šimtu)	Tūris (l)				
	1	2	3	4	5
1	4	170	340	680	1360
2	8	340	680	1360	2720
3	12	510	1020	2040	4080
4	16	680	1360	2720	5440
5	20	850	1700	3400	6800
6	24	1020	2040	4080	8160
7	28	1190	2380	4760	9520
8	32	1360	2720	5440	10880
9	36	1530	3060	6120	12240
10	40	1700	3400	6800	13600
11	44	1870	3740	7480	14960
12	48	2040	4080	8160	16320
13	52	2210	4420	8840	17680
14	56	2380	4760	9520	19040
15	60	2550	5100	10200	20400
16	64	2720	5440	10880	21760
17	68	2890	5780	11560	23120
18	72	3060	6120	12240	24480
19	76	3230	6460	12920	25840
20	80	3400	6800	13600	27200
21	84	3570	7140	14280	28560
22	88	3740	7480	14960	29920
23	92	3910	7820	15640	31280
24	96	4080	8160	16320	32640
25	100	4250	8500	17000	34000
26	104	4420	8840	17680	35360
27	108	4590	9180	18360	36720
28	112	4760	9520	19040	38080
29	116	4930	9860	19720	39440
30	120	5100	10200	20400	40800
31	124	5270	10540	21080	42160
32	128	5440	10880	21760	43520
33	132	5610	11220	22440	44880
34	136	5780	11560	23120	46240
35	140	5950	11900	23800	47600
36	144	6120	12240	24480	48960
37	148	6290	12580	25160	50320
38	152	6460	12920	25840	51680
39	156	6630	13260	26520	53040
40	160	6800	13600	27200	54400
41	164	6970	13940	27880	55760
42	168	7140	14280	28560	57120
43	172	7310	14620	29240	58480
44	176	7480	14960	29920	59840
45	180	7650	15300	30600	61200
46	184	7820	15640	31280	62560
47	188	7990	15980	31960	63920
48	192	8160	16320	32640	65280
49	196	8330	16660	33320	66640
50	200	8500	17000	34000	68000
51	204	8670	17340	34680	69360
52	208	8840	17680	35360	70720
53	212	9010	18020	36040	72080
54	216	9180	18360	36720	73440
55	220	9350	18700	37400	74800
56	224	9520	19040	38080	76160
57	228	9690	19380	38760	77520
58	232	9860	19720	39440	78880
59	236	10030	20060	40120	80240
60	240	10200	20400	40800	81600
61	244	10370	20740	41480	82960
62	248	10540	21080	42160	84320
63	252	10710	21420	42840	85680
64	256	10880	21760	43520	87040
65	260	11050	22100	44200	88400
66	264	11220	22440	44880	89760
67	268	11390	22780	45560	91120
68	272	11560	23120	46240	92480
69	276	11730	23460	46920	93840
70	280	11900	23800	47600	95200
71	284	12070	24140	48280	96560
72	288	12240	24480	48960	97920
73	292	12410	24820	49640	99280
74	296	12580	25160	50320	100640
75	300	12750	25500	51000	102000
76	304	12920	25840	51680	103360
77	308	13090	26180	52360	104720
78	312	13260	26520	53040	106080
79	316	13430	26860	53720	107440
80	320	13600	27200	54400	108800
81	324	13770	27540	55080	110160
82	328	13940	27880	55760	111520
83	332	14110	28220	56440	112880
84	336	14280	28560	57120	114240
85	340	14450	28900	57800	115600
86	344	14620	29240	58480	116960
87	348	14790	29580	59160	118320
88	352	14960	29920	59840	119680
89	356	15130	30260	60520	121040
90	360	15300	30600	61200	122400
91	364	15470	30940	61880	123760
92	368	15640	31280	62560	125120
93	372	15810	31620	63240	126480
94	376	15980	31960	63920	127840
95	380	16150	32300	64600	129200
96	384	16320	32640	65280	130560
97	388	16490	32980	65960	131920
98	392	16660	33320	66640	133280
99	396	16830	33660	67320	134640
100	400	17000	34000	68000	136000

[TRISUN](#) Sandariklio matmenys pateikti lentelėje:

TS MG1(TSG) TS MG12(TSG2)

技术参数:

压力: $\leq 1.2\text{MPa}$

线速度: $\leq 10\text{m/s}$

温度: $-20^{\circ}\text{C} \sim +120^{\circ}\text{C}$

Operating Limits

Pressure: $\leq 1.2\text{MPa}$

Speed: $\leq 10\text{m/s}$

Temperature: $-20^{\circ}\text{C} \sim +120^{\circ}\text{C}$



- 动环(石墨/碳化硅/碳化钨)
- 静环(陶瓷/碳化硅/碳化钨)
- 辅助密封(丁腈胶/三元乙丙胶/氟胶)
- 弹簧及其它金属件(不锈钢)



- Rotary Ring (Carbon/SiC/TC)
- Stationary Ring (Ceramic/SiC/TC)
- Secondary Seal (NBR/EPDM/VITON)
- Spring & Other Parts (SUS304/SUS316)

TS MG1					
Seal size d(mm)	d	d ₂	d ₃	d _{st}	l ₁
8	8	17.5	19.0	23	12.5
10	10	20.5	22.5	24	14.5
12	12	22.5	25.0	26	15.0
14	14	26.5	28.5	30	17.0
15	15	26.5	28.5	30	17.0
16	16	26.5	28.5	30	17.0
18	18	29.0	32.0	33	19.5
19	19	33.0	37.0	38	21.5
20	20	33.0	37.0	38	21.5
22	22	33.0	37.0	38	21.5
24	24	38.0	42.5	44	22.5
25	25	38.0	42.5	44	23.0
28	28	44.0	49.0	50	26.5
30	30	44.0	49.0	50	26.5
32	32	46.0	53.5	55	27.5
33	33	46.0	53.5	55	27.5
35	35	50.0	57.0	59	28.5
38	38	53.0	59.0	61	30.0
40	40	55.0	62.0	64	30.0
42	42	58.0	65.5	67	30.0
43	43	58.0	65.5	67	30.0
45	45	60.0	68.0	70	30.0
48	48	63.0	70.5	74	30.5
50	50	65.0	74.0	77	30.5
53	53	70.0	78.5	81	33.0
55	55	72.0	81.0	83	35.0
58	58	75.0	85.5	88	37.0
60	60	79.0	88.5	91	38.0
65	65	84.0	93.5	96	40.0
68	68	88.0	96.5	100	40.0
70	70	90.0	99.5	103	40.0
75	75	95.0	107.0	110	40.0
80	80	100.0	112.0	116	40.0
85	85	107.0	120.0	124	41.0
90	90	114.0	127.0	131	45.0
95	95	119.0	132.0	136	46.0
100	100	124.0	137.0	140	47.0

TS MG12					
Seal size d(mm)	d	d ₂	d _{st}	d ₃	l ₁
10	10	20.5	24	22.5	25.9
12	12	22.5	26	25.0	25.9
14	14	26.5	30	28.5	28.4
16	16	26.5	30	28.5	28.4
18	18	29.0	33	32.0	30.0
20	20	33.0	38	37.0	30.0
22	22	33.0	38	37.0	30.0
24	24	38.0	44	42.5	32.5
25	25	38.0	44	42.5	32.5
28	28	44.0	50	49.0	35.0
30	30	44.0	50	49.0	35.0
32	32	46.0	55	53.5	35.0
33	33	46.0	55	53.5	35.0
35	35	50.0	59	57.0	35.0
38	38	53.0	61	59.0	36.0
40	40	55.0	64	62.0	36.0
43	43	58.0	67	65.5	36.0
45	45	60.0	70	68.0	36.0
48	48	63.0	74	70.5	36.0
50	50	65.0	77	74.0	38.0
53	53	70.0	81	78.5	36.5
55	55	72.0	83	81.0	36.5
58	58	75.0	88	85.5	41.5
60	60	79.0	91	88.5	41.5
65	65	84.0	96	93.5	41.5
68	68	88.0	100	96.5	41.2
70	70	90.0	103	99.5	48.7
75	75	95.0	110	107.0	48.7
80	80	100.0	116	112.0	48.0
85	85	107.0	124	120.0	46.0
90	90	114.0	131	127.0	51.0
95	95	119.0	136	132.0	51.0
100	100	124.0	140	137.0	51.0