

VANDENS SIURBLIAI, UAB  
Įmonės kodas 144708571  
PVM kodas LT447085716  
Girulių g. 24, Šiauliai  
LT78138, Lietuva



## MECHANINIS SANDARIKLIS TS155-32 SIC/SIC/NBR/SS304 - 76.73 €

**Gamintojas**

---

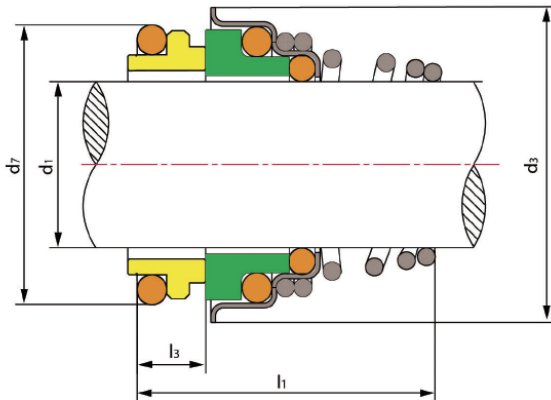
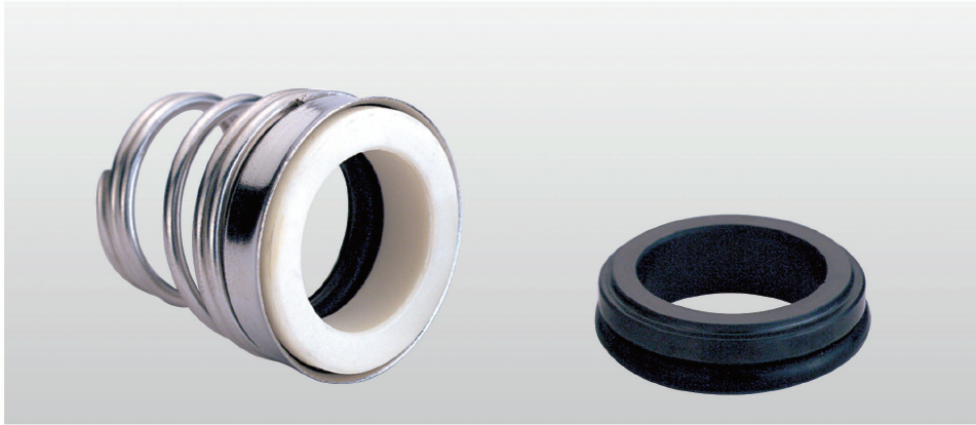


### APRAŠYMAS:

---

“TS 155” serijos sandariklių veikimo ribos □ Slėgis: ≤1MPa Greitis: ≤15 m / s Temperatūra: -30 °C □  
+ 200 °C Sukamasis žiedas (Sic/tc) Stacionarus žiedas (plastikinė anglis / anglis / Sic / Tc) Antrinis  
sandariklis (NBR / Epdm / VITON) Spyruoklė ir kitos dalys (Sus304 / Sus316)

| Modelis  | d1 | d3   | d7   | L1   | L3  |
|----------|----|------|------|------|-----|
| TS155-32 | 32 | 46.0 | 43.3 | 39.0 | 9.0 |



## TS 155

### Operating Limits

Pressure:  $\leq 1\text{MPa}$

Speed:  $\leq 15\text{ m/s}$

Temperature:  $-30^{\circ}\text{C} \sim +200^{\circ}\text{C}$

- Rotary Ring(Ceramic/SiC/TC)
- Stationary Ring(Plastic Carbon/Carbon/SiC/TC)
- Secondary Seal(NBR/EPDM/MITON)
- Spring & Other Parts(SUS304/SUS316)

| Model    | d <sub>1</sub> (mm) | d <sub>3</sub> | d <sub>7</sub> | l <sub>1</sub> | l <sub>3</sub> |
|----------|---------------------|----------------|----------------|----------------|----------------|
| TS155-10 | 10                  | 20.0           | 18.1           | 20.5           | 5.5            |
| TS155-11 | 11                  | 22.0           | 20.6           | 23.5           | 5.5            |
| TS155-12 | 12                  | 22.0           | 20.6           | 23.5           | 5.5            |
| TS155-13 | 13                  | 25.0           | 23.1           | 28.0           | 6.0            |
| TS155-14 | 14                  | 25.0           | 23.1           | 28.0           | 6.0            |
| TS155-15 | 15                  | 29.0           | 26.9           | 30.0           | 7.0            |
| TS155-16 | 16                  | 29.0           | 26.9           | 30.0           | 7.0            |
| TS155-17 | 17                  | 29.0           | 26.9           | 30.0           | 7.0            |
| TS155-18 | 18                  | 33.0           | 30.9           | 32.0           | 8.0            |
| TS155-19 | 19                  | 33.0           | 30.9           | 33.0           | 8.0            |
| TS155-20 | 20                  | 33.0           | 30.9           | 33.0           | 8.0            |
| TS155-21 | 21                  | 38.0           | 35.4           | 33.0           | 8.0            |

| Model    | d <sub>1</sub> (mm) | d <sub>3</sub> | d <sub>7</sub> | l <sub>1</sub> | l <sub>3</sub> |
|----------|---------------------|----------------|----------------|----------------|----------------|
| TS155-22 | 22                  | 38.0           | 35.4           | 33.0           | 8.0            |
| TS155-23 | 23                  | 38.0           | 35.4           | 35.0           | 8.0            |
| TS155-24 | 24                  | 38.0           | 35.4           | 35.0           | 8.0            |
| TS155-25 | 25                  | 40.0           | 38.2           | 35.5           | 8.5            |
| TS155-28 | 28                  | 46.0           | 43.3           | 39.0           | 9.0            |
| TS155-29 | 29                  | 46.0           | 43.3           | 39.0           | 9.0            |
| TS155-30 | 30                  | 46.0           | 43.3           | 39.0           | 9.0            |
| TS155-32 | 32                  | 46.0           | 43.3           | 39.0           | 9.0            |
| TS155-33 | 33                  | 50.0           | 53.5           | 50.5           | 11.5           |
| TS155-35 | 35                  | 50.0           | 53.5           | 50.5           | 11.5           |
| TS155-38 | 38                  | 60.5           | 60.5           | 50.5           | 11.5           |
| TS155-40 | 40                  | 60.5           | 60.5           | 50.5           | 11.5           |