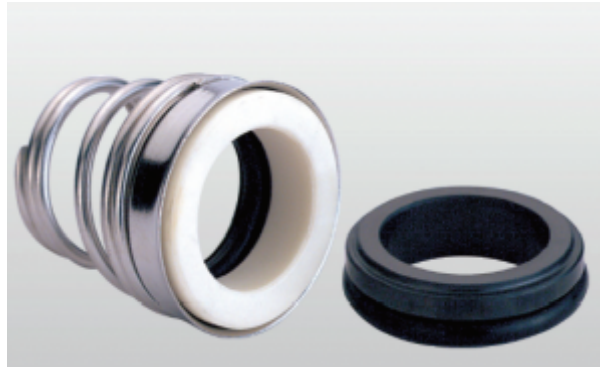


VANDENS SIURBLIAI, UAB
Įmonės kodas 144708571
PVM kodas LT447085716
Girulių g. 24, Šiauliai
LT78138, Lietuva

 vandens
SIURBLIAI
VANDUO BE RŪPESČIŲ



RIEBOKŠLIAI TS155-14 SIC/SIC/VIT/SUS304 - 21.03 €

Gamintojas



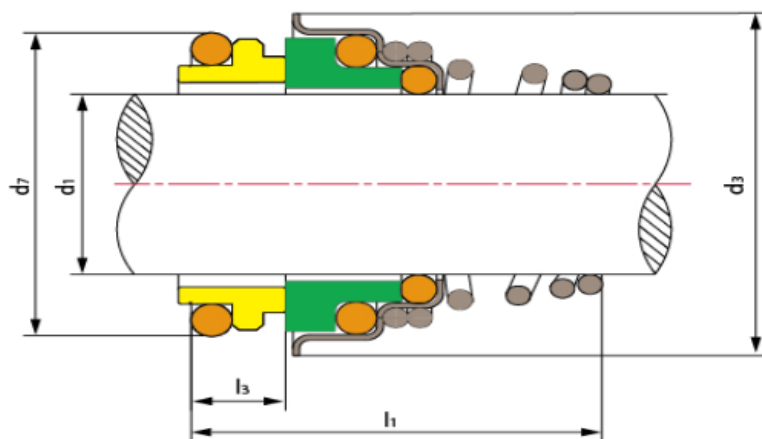
APRAŠYMAS:

Veikimo ribos:

- Slėgis: $\leq 1\text{MPa}$
- Sukimosi greitis: $\leq 15\text{ m / s}$
- Temperatūra: $-30\text{ °C} \square + 200\text{ °C}$

Medžiagos:

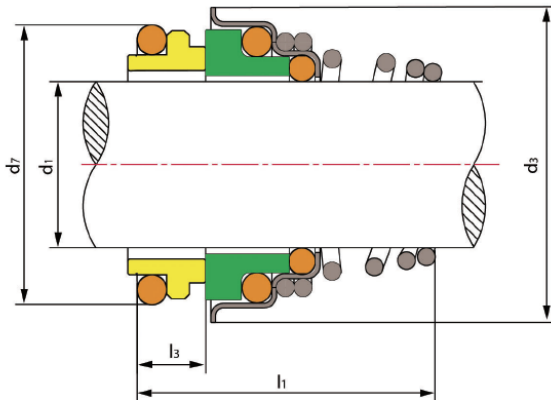
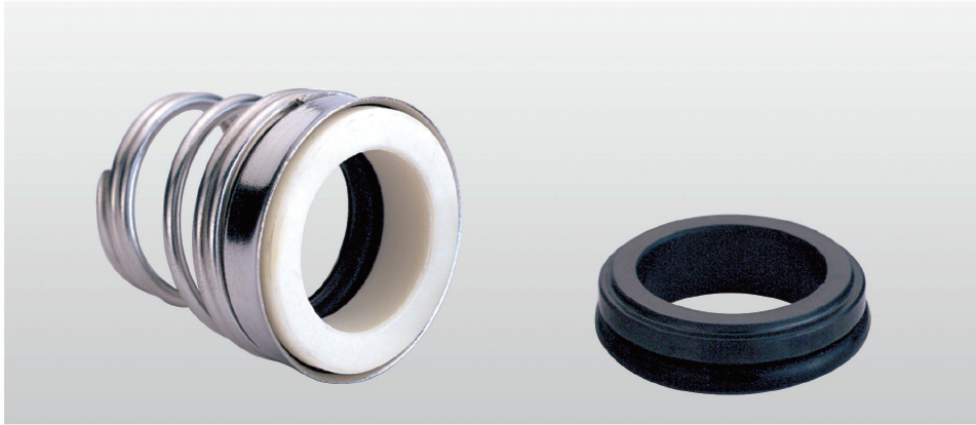
- Sukamasis žiedas („Sic / tc“)
- Stacionarus žiedas (plastikinė anglis / anglis / Sic / Tc)
- Antrinis sandariklis (nbr / Epdm / VITON)
- Spyruoklė ir kitos dalys (Sus304 / Sus316)



| Model | d_1 (mm) | d_3 | d_7 | l_1 | l_3 |
|----------|------------|-------|-------|-------|-------|
| TS155-10 | 10 | 20 | 18.1 | 20.5 | 5.5 |
| TS155-11 | 11 | 22 | 20.6 | 23.5 | 5.5 |
| TS155-12 | 12 | 22 | 20.6 | 23.5 | 5.5 |
| TS155-13 | 13 | 25 | 23.1 | 28 | 6 |
| TS155-14 | 14 | 25 | 23.1 | 28 | 6 |
| TS155-15 | 15 | 29 | 26.9 | 30 | 7 |
| TS155-16 | 16 | 29 | 26.9 | 30 | 7 |
| TS155-17 | 17 | 29 | 26.9 | 30 | 7 |
| TS155-18 | 18 | 33 | 30.9 | 32 | 8 |
| TS155-19 | 19 | 33 | 30.9 | 33 | 8 |
| TS155-20 | 20 | 33 | 30.9 | 33 | 8 |
| TS155-21 | 21 | 38 | 35.4 | 33 | 8 |

| Model | d_1 (mm) | d_3 | d_7 | l_1 | l_3 |
|----------|------------|-------|-------|-------|-------|
| TS155-22 | 22 | 38 | 35.4 | 33 | 8 |
| TS155-23 | 23 | 38 | 35.4 | 35 | 8 |
| TS155-24 | 24 | 38 | 35.4 | 35 | 8 |
| TS155-25 | 25 | 40 | 38.2 | 35.5 | 8.5 |
| TS155-28 | 28 | 46 | 43.3 | 39 | 9 |
| TS155-29 | 29 | 46 | 43.3 | 39 | 9 |
| TS155-30 | 30 | 46 | 43.3 | 39 | 9 |
| TS155-32 | 32 | 46 | 43.3 | 39 | 9 |
| TS155-33 | 33 | 50 | 53.5 | 50.5 | 11.5 |
| TS155-35 | 35 | 50 | 53.5 | 50.5 | 11.5 |
| TS155-38 | 38 | 60.5 | 60.5 | 50.5 | 11.5 |
| TS155-40 | 40 | 60.5 | 60.5 | 50.5 | 11.5 |

Gamintojas: [TRISUN](#)



TS 155

Operating Limits

Pressure: $\leq 1\text{MPa}$

Speed: $\leq 15\text{ m/s}$

Temperature: $-30^{\circ}\text{C} \sim +200^{\circ}\text{C}$

- Rotary Ring(Ceramic/SiC/TC)
- Stationary Ring(Plastic Carbon/Carbon/SiC/TC)
- Secondary Seal(NBR/EPDM/MITON)
- Spring & Other Parts(SUS304/SUS316)

| Model | d ₁ (mm) | d ₃ | d ₇ | l ₁ | l ₃ |
|----------|---------------------|----------------|----------------|----------------|----------------|
| TS155-10 | 10 | 20.0 | 18.1 | 20.5 | 5.5 |
| TS155-11 | 11 | 22.0 | 20.6 | 23.5 | 5.5 |
| TS155-12 | 12 | 22.0 | 20.6 | 23.5 | 5.5 |
| TS155-13 | 13 | 25.0 | 23.1 | 28.0 | 6.0 |
| TS155-14 | 14 | 25.0 | 23.1 | 28.0 | 6.0 |
| TS155-15 | 15 | 29.0 | 26.9 | 30.0 | 7.0 |
| TS155-16 | 16 | 29.0 | 26.9 | 30.0 | 7.0 |
| TS155-17 | 17 | 29.0 | 26.9 | 30.0 | 7.0 |
| TS155-18 | 18 | 33.0 | 30.9 | 32.0 | 8.0 |
| TS155-19 | 19 | 33.0 | 30.9 | 33.0 | 8.0 |
| TS155-20 | 20 | 33.0 | 30.9 | 33.0 | 8.0 |
| TS155-21 | 21 | 38.0 | 35.4 | 33.0 | 8.0 |

| Model | d ₁ (mm) | d ₃ | d ₇ | l ₁ | l ₃ |
|----------|---------------------|----------------|----------------|----------------|----------------|
| TS155-22 | 22 | 38.0 | 35.4 | 33.0 | 8.0 |
| TS155-23 | 23 | 38.0 | 35.4 | 35.0 | 8.0 |
| TS155-24 | 24 | 38.0 | 35.4 | 35.0 | 8.0 |
| TS155-25 | 25 | 40.0 | 38.2 | 35.5 | 8.5 |
| TS155-28 | 28 | 46.0 | 43.3 | 39.0 | 9.0 |
| TS155-29 | 29 | 46.0 | 43.3 | 39.0 | 9.0 |
| TS155-30 | 30 | 46.0 | 43.3 | 39.0 | 9.0 |
| TS155-32 | 32 | 46.0 | 43.3 | 39.0 | 9.0 |
| TS155-33 | 33 | 50.0 | 53.5 | 50.5 | 11.5 |
| TS155-35 | 35 | 50.0 | 53.5 | 50.5 | 11.5 |
| TS155-38 | 38 | 60.5 | 60.5 | 50.5 | 11.5 |
| TS155-40 | 40 | 60.5 | 60.5 | 50.5 | 11.5 |