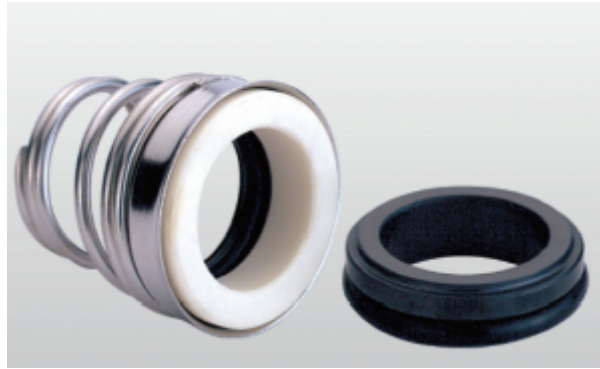


VANDENS SIURBLIAI, UAB  
Įmonės kodas 144708571  
PVM kodas LT447085716  
Girulių g. 24, Šiauliai  
LT78138, Lietuva

 vandens  
SIURBLIAI  
VANDUO BE RŪPESČIŲ



## **RIEBOKŠLIAI TS155-15 SIC/SIC/VIT/SUS304 - 21.03 €**

### **Gamintojas**

---



### **APRAŠYMAS:**

---

Veikimo ribos:

- Slėgis:  $\leq 1\text{MPa}$
- Sukimosi greitis:  $\leq 15\text{ m / s}$
- Temperatūra:  $-30\text{ °C} \square + 200\text{ °C}$

Medžiagos:

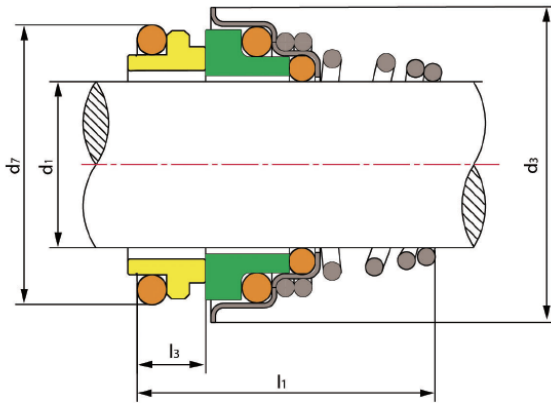
- Sukamasis žiedas („Sic / tc“)
- Stacionarus žiedas (plastikinė anglis / anglis / Sic / Tc)
- Antrinis sandariklis (nbr / Epdm / VITON)
- Spyruoklė ir kitos dalys (Sus304 / Sus316)



Model	$d_1$ (mm)	$d_3$	$d_7$	$l_1$	$l_3$
TS155-10	10	20	18.1	20.5	5.5
TS155-11	11	22	20.6	23.5	5.5
TS155-12	12	22	20.6	23.5	5.5
TS155-13	13	25	23.1	28	6
TS155-14	14	25	23.1	28	6
TS155-15	15	29	26.9	30	7
TS155-16	16	29	26.9	30	7
TS155-17	17	29	26.9	30	7
TS155-18	18	33	30.9	32	8
TS155-19	19	33	30.9	33	8
TS155-20	20	33	30.9	33	8
TS155-21	21	38	35.4	33	8

Model	$d_1$ (mm)	$d_3$	$d_7$	$l_1$	$l_3$
TS155-22	22	38	35.4	33	8
TS155-23	23	38	35.4	35	8
TS155-24	24	38	35.4	35	8
TS155-25	25	40	38.2	35.5	8.5
TS155-28	28	46	43.3	39	9
TS155-29	29	46	43.3	39	9
TS155-30	30	46	43.3	39	9
TS155-32	32	46	43.3	39	9
TS155-33	33	50	53.5	50.5	11.5
TS155-35	35	50	53.5	50.5	11.5
TS155-38	38	60.5	60.5	50.5	11.5
TS155-40	40	60.5	60.5	50.5	11.5

Gamintojas: [TRISUN](#)



## TS 155

### Operating Limits

Pressure:  $\leq 1\text{MPa}$

Speed:  $\leq 15\text{ m/s}$

Temperature:  $-30^{\circ}\text{C} \sim +200^{\circ}\text{C}$

- Rotary Ring(Ceramic/SiC/TC)
- Stationary Ring(Plastic Carbon/Carbon/SiC/TC)
- Secondary Seal(NBR/EPDM/MITON)
- Spring & Other Parts(SUS304/SUS316)

Model	d <sub>1</sub> (mm)	d <sub>3</sub>	d <sub>7</sub>	l <sub>1</sub>	l <sub>3</sub>
TS155-10	10	20.0	18.1	20.5	5.5
TS155-11	11	22.0	20.6	23.5	5.5
TS155-12	12	22.0	20.6	23.5	5.5
TS155-13	13	25.0	23.1	28.0	6.0
TS155-14	14	25.0	23.1	28.0	6.0
TS155-15	15	29.0	26.9	30.0	7.0
TS155-16	16	29.0	26.9	30.0	7.0
TS155-17	17	29.0	26.9	30.0	7.0
TS155-18	18	33.0	30.9	32.0	8.0
TS155-19	19	33.0	30.9	33.0	8.0
TS155-20	20	33.0	30.9	33.0	8.0
TS155-21	21	38.0	35.4	33.0	8.0

Model	d <sub>1</sub> (mm)	d <sub>3</sub>	d <sub>7</sub>	l <sub>1</sub>	l <sub>3</sub>
TS155-22	22	38.0	35.4	33.0	8.0
TS155-23	23	38.0	35.4	35.0	8.0
TS155-24	24	38.0	35.4	35.0	8.0
TS155-25	25	40.0	38.2	35.5	8.5
TS155-28	28	46.0	43.3	39.0	9.0
TS155-29	29	46.0	43.3	39.0	9.0
TS155-30	30	46.0	43.3	39.0	9.0
TS155-32	32	46.0	43.3	39.0	9.0
TS155-33	33	50.0	53.5	50.5	11.5
TS155-35	35	50.0	53.5	50.5	11.5
TS155-38	38	60.5	60.5	50.5	11.5
TS155-40	40	60.5	60.5	50.5	11.5