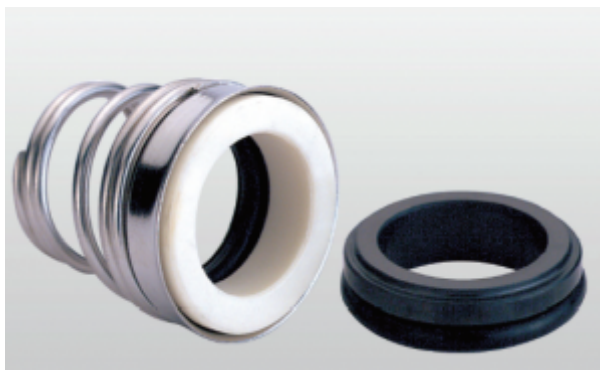


VANDENS SIURBLIAI, UAB
Įmonės kodas 144708571
PVM kodas LT447085716
Girulių g. 24, Šiauliai
LT78138, Lietuva

 vandens
SIURBLIAI
VANDUO BE RŪPESČIŲ



RIEBOKŠLIAI TS155-15 SIC/TC/VIT/SUS304 - 21.03 €

Gamintojas



APRAŠYMAS:

Veikimo ribos:

- Slėgis: $\leq 1\text{MPa}$
- Sukimosi greitis: $\leq 15\text{ m / s}$
- Temperatūra: $-30\text{ °C} \square + 200\text{ °C}$

Medžiagos:

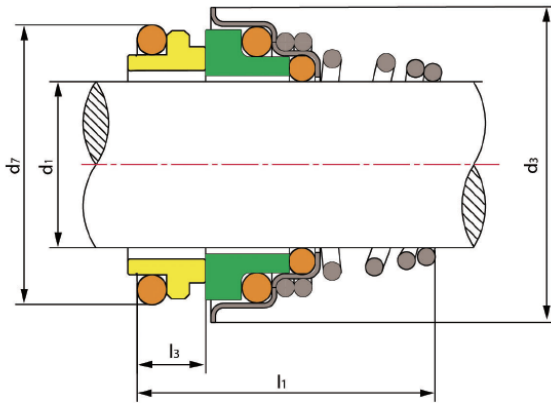
- Sukamasis žiedas („Sic / tc“)
- Stacionarus žiedas (plastikinė anglis / anglis / Sic / Tc)
- Antrinis sandariklis (nbr / Epdm / VITON)
- Spyruoklė ir kitos dalys (Sus304 / Sus316)



Model	d_1 (mm)	d_3	d_7	l_1	l_3
TS155-10	10	20	18.1	20.5	5.5
TS155-11	11	22	20.6	23.5	5.5
TS155-12	12	22	20.6	23.5	5.5
TS155-13	13	25	23.1	28	6
TS155-14	14	25	23.1	28	6
TS155-15	15	29	26.9	30	7
TS155-16	16	29	26.9	30	7
TS155-17	17	29	26.9	30	7
TS155-18	18	33	30.9	32	8
TS155-19	19	33	30.9	33	8
TS155-20	20	33	30.9	33	8
TS155-21	21	38	35.4	33	8

Model	d_1 (mm)	d_3	d_7	l_1	l_3
TS155-22	22	38	35.4	33	8
TS155-23	23	38	35.4	35	8
TS155-24	24	38	35.4	35	8
TS155-25	25	40	38.2	35.5	8.5
TS155-28	28	46	43.3	39	9
TS155-29	29	46	43.3	39	9
TS155-30	30	46	43.3	39	9
TS155-32	32	46	43.3	39	9
TS155-33	33	50	53.5	50.5	11.5
TS155-35	35	50	53.5	50.5	11.5
TS155-38	38	60.5	60.5	50.5	11.5
TS155-40	40	60.5	60.5	50.5	11.5

Gamintojas: [TRISUN](#)



TS 155

Operating Limits

Pressure: $\leq 1\text{MPa}$

Speed: $\leq 15\text{ m/s}$

Temperature: $-30^{\circ}\text{C} \sim +200^{\circ}\text{C}$

- Rotary Ring(Ceramic/SiC/TC)
- Stationary Ring(Plastic Carbon/Carbon/SiC/TC)
- Secondary Seal(NBR/EPDM/MITON)
- Spring & Other Parts(SUS304/SUS316)

Model	d ₁ (mm)	d ₃	d ₇	l ₁	l ₃
TS155-10	10	20.0	18.1	20.5	5.5
TS155-11	11	22.0	20.6	23.5	5.5
TS155-12	12	22.0	20.6	23.5	5.5
TS155-13	13	25.0	23.1	28.0	6.0
TS155-14	14	25.0	23.1	28.0	6.0
TS155-15	15	29.0	26.9	30.0	7.0
TS155-16	16	29.0	26.9	30.0	7.0
TS155-17	17	29.0	26.9	30.0	7.0
TS155-18	18	33.0	30.9	32.0	8.0
TS155-19	19	33.0	30.9	33.0	8.0
TS155-20	20	33.0	30.9	33.0	8.0
TS155-21	21	38.0	35.4	33.0	8.0

Model	d ₁ (mm)	d ₃	d ₇	l ₁	l ₃
TS155-22	22	38.0	35.4	33.0	8.0
TS155-23	23	38.0	35.4	35.0	8.0
TS155-24	24	38.0	35.4	35.0	8.0
TS155-25	25	40.0	38.2	35.5	8.5
TS155-28	28	46.0	43.3	39.0	9.0
TS155-29	29	46.0	43.3	39.0	9.0
TS155-30	30	46.0	43.3	39.0	9.0
TS155-32	32	46.0	43.3	39.0	9.0
TS155-33	33	50.0	53.5	50.5	11.5
TS155-35	35	50.0	53.5	50.5	11.5
TS155-38	38	60.5	60.5	50.5	11.5
TS155-40	40	60.5	60.5	50.5	11.5