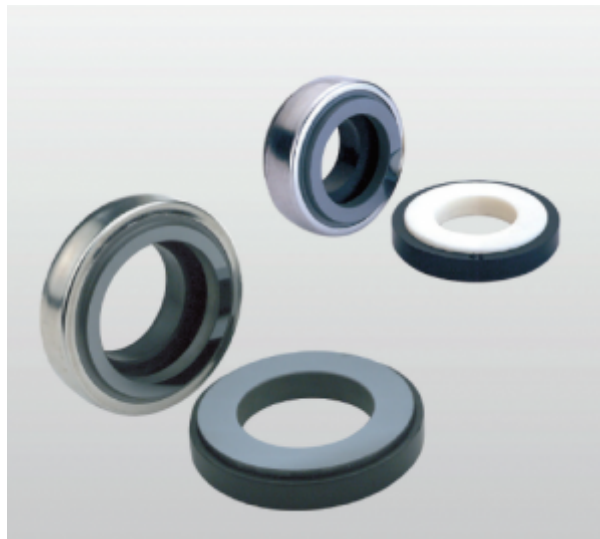


VANDENS SIURBLIAI, UAB
Įmonės kodas 144708571
PVM kodas LT447085716
Girulių g. 24, Šiauliai
LT78138, Lietuva



MECHANINIS SANDARIKLIS TS301-20 SIC/CE/VIT/SS304 - 40.61 €

Gamintojas



APRAŠYMAS:

Riebokšliai: serija TS 301

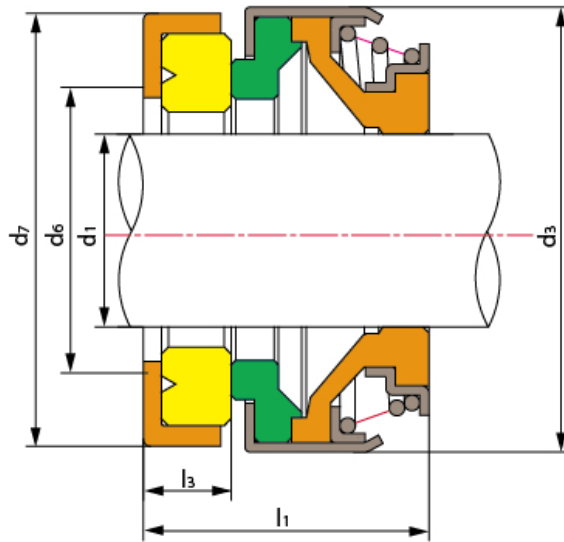
Veikimo ribos:

- Slėgis: $\leq 0,6$ MPa
- Greitis: ≤ 10 m/s
- Temperatūra: -30 °C □ $+ 200$ °C

Medžiagos:

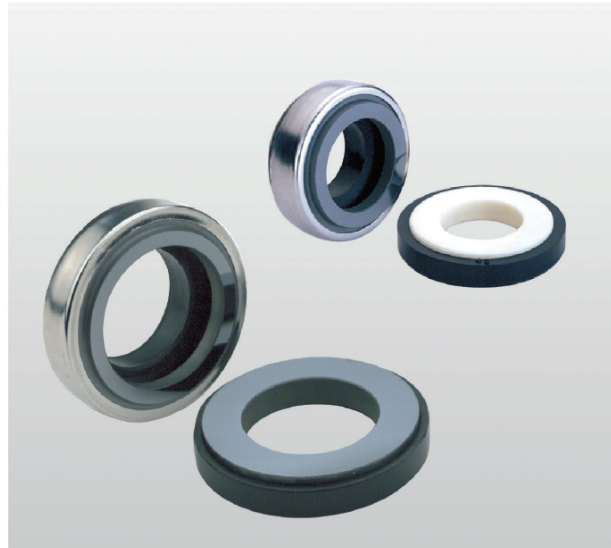
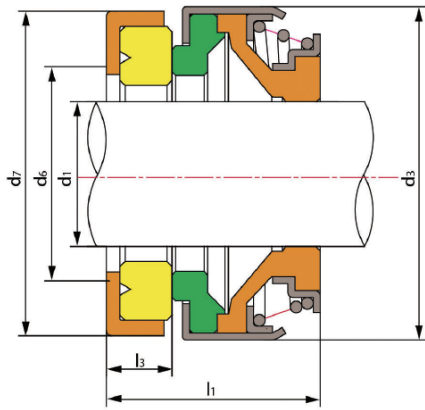
- Sukamasis žiedas (plastikinė anglis / anglis / Sic / TC)
- Stacionarus žiedas (keramikinis / Sic / Tc)
- Antrinis sandariklis (nbr / Epdm / VITON)
- Spyruoklė ir kitos dalys (Sus304 / Sus316)

Matmenys:



| Model | d_1 (mm) | d_3 | d_6 | d_7 | l_1 | l_3 |
|-----------|------------|-------|-------|---------|---------|---------|
| TS301-6 | 6 | 18 | 8 | 22 | 14 | 4 |
| TS301-8S | 8 | 18 | 10 | 22 | 15 | 4 |
| TS301-8M | 8 | 20 | 10 | 22/26 | 15/16.5 | 4.0/5.5 |
| TS301-8L | 8 | 24 | 10 | 26 | 16.5 | 5.5 |
| TS301-10 | 10 | 24 | 12 | 26 | 21 | 8 |
| TS301-11 | 11 | 24 | 13 | 26 | 21 | 8 |
| TS301-12 | 12 | 24 | 14 | 25/26 | 21 | 8 |
| TS301-13 | 13 | 24 | 15 | 26 | 18.5/21 | 5.5/8.0 |
| TS301-13L | 13 | 28 | 16 | 28 | 21 | 8 |
| TS301-13H | 13 | 32 | 16 | 29.5 | 30.5 | 8 |
| TS301-14 | 14 | 28 | 16 | 28/28.5 | 21 | 8 |
| TS301-14L | 14 | 32 | 16 | 29.5 | 21 | 8 |
| TS301-15S | 15 | 28 | 16 | 28.5/30 | 21 | 8 |
| TS301-15M | 15 | 32 | 16 | 30/29.5 | 21 | 8 |
| TS301-15L | 15 | 39 | 18 | 38 | 21 | 8 |
| TS301-16S | 16 | 28 | 16 | 29.5/30 | 21 | 8 |
| TS301-16M | 16 | 32 | 18 | 29.5 | 21 | 8 |
| TS301-16L | 16 | 39 | 18 | 38 | 21 | 8 |
| TS301-16H | 16 | 32 | 16 | 30 | 29 | 10 |
| TS301-17 | 17 | 39 | 19 | 42 | 21 | 8 |
| TS301-18 | 18 | 39 | 20 | 42 | 21 | 8 |

| Model | d_1 (mm) | d_3 | d_6 | d_7 | l_1 | l_3 |
|-----------|------------|-------|-------|-------|-------|-------|
| TS301-19 | 19 | 39 | 21 | 42 | 21 | 8 |
| TS301-20 | 20 | 39 | 22 | 42 | 21 | 8 |
| TS301-20L | 20 | 42 | 24 | 45 | 23 | 10 |
| TS301-22S | 22 | 36 | 24 | 45 | 26.5 | 10 |
| TS301-22L | 22 | 42 | 24 | 45 | 23 | 10 |
| TS301-23 | 23 | 47 | 25 | 50 | 23.5 | 10 |
| TS301-24 | 24 | 47 | 26 | 50 | 23.5 | 10 |
| TS301-25 | 25 | 42 | 27 | 50 | 23.5 | 10 |
| TS301-25L | 25 | 47 | 27 | 50 | 23.5 | 10 |
| TS301-26 | 26 | 47 | 29 | 50 | 23.5 | 10 |
| TS301-27 | 27 | 47 | 30 | 50 | 23.5 | 10 |
| TS301-28 | 28 | 54 | 31 | 57 | 25 | 10 |
| TS301-30 | 30 | 54 | 33 | 57 | 25 | 10 |
| TS301-32 | 32 | 54 | 35 | 57 | 25 | 10 |
| TS301-35 | 35 | 60 | 38 | 63 | 26 | 10 |
| TS301-38 | 38 | 65 | 41 | 68 | 30 | 12 |
| TS301-40 | 40 | 65 | 43 | 68 | 30 | 12 |
| TS301-45 | 45 | 70 | 48 | 73 | 32 | 12 |
| TS301-50 | 50 | 85 | 52 | 88 | 38 | 15 |
| TS301-55 | 55 | 85 | 58 | 88 | 38 | 15 |
| TS301-60 | 60 | 105 | 63 | 110 | 45 | 15 |
| TS301-65 | 65 | 105 | \ | 110 | 47 | 15 |



TS 301

Operating Limits

Pressure: $\leq 0.6\text{MPa}$

Speed: $\leq 10\text{m/s}$

Temperature: $-30^{\circ}\text{C} \sim +200^{\circ}\text{C}$

| Model | d ₁ (mm) | d ₃ | d ₆ | d ₇ | l ₁ | l ₃ | Model | d ₁ (mm) | d ₃ | d ₆ | d ₇ | l ₁ | l ₃ |
|-----------|---------------------|----------------|----------------|----------------|----------------|----------------|-----------|---------------------|----------------|----------------|----------------|----------------|----------------|
| TS301-6 | 6 | 18 | 8 | 22.0 | 14.0 | 4.0 | TS301-19 | 19 | 39 | 21 | 42.0 | 21.0 | 8.0 |
| TS301-8S | 8 | 18 | 10 | 22.0 | 15.0 | 4.0 | TS301-20 | 20 | 39 | 22 | 42.0 | 21.0 | 8.0 |
| TS301-8M | 8 | 20 | 10 | 22/26 | 16.5 | 4.0/5.5 | TS301-20L | 20 | 42 | 24 | 45.0 | 23.0 | 10.0 |
| TS301-8L | 8 | 24 | 10 | 26.0 | 16.5 | 5.5 | TS301-22S | 22 | 36 | 24 | 45.0 | 26.5 | 10.0 |
| TS301-10 | 10 | 24 | 12 | 26.0 | 21.0 | 8.0 | TS301-22L | 22 | 42 | 24 | 45.0 | 23.0 | 10.0 |
| TS301-11 | 11 | 24 | 13 | 26.0 | 21.0 | 8.0 | TS301-23 | 23 | 47 | 25 | 50.0 | 23.5 | 10.0 |
| TS301-12 | 12 | 24 | 14 | 25/26 | 21.0 | 8.0 | TS301-24 | 24 | 47 | 26 | 50.0 | 23.5 | 10.0 |
| TS301-13 | 13 | 24 | 15 | 26.0 | 19.5 | 5.5/8.0 | TS301-25 | 25 | 42 | 27 | 50.0 | 23.5 | 10.0 |
| TS301-13L | 13 | 28 | 16 | 28.0 | 21.0 | 8.0 | TS301-25L | 25 | 47 | 27 | 50.0 | 23.5 | 10.0 |
| TS301-13H | 13 | 32 | 16 | 29.5 | 30.5 | 8.0 | TS301-26 | 26 | 47 | 29 | 50.0 | 23.5 | 10.0 |
| TS301-14 | 14 | 28 | 16 | 28/28.5 | 21.0 | 8.0 | TS301-27 | 27 | 47 | 30 | 50.0 | 23.5 | 10.0 |
| TS301-14L | 14 | 32 | 16 | 29.5 | 21.0 | 8.0 | TS301-28 | 28 | 54 | 31 | 57.0 | 25.0 | 10.0 |
| TS301-15S | 15 | 28 | 16 | 28.5/30 | 21.0 | 8.0 | TS301-30 | 30 | 54 | 33 | 57.0 | 25.0 | 10.0 |
| TS301-15M | 15 | 32 | 16 | 30/29.5 | 21.0 | 8.0 | TS301-32 | 32 | 54 | 35 | 57.0 | 25.0 | 10.0 |
| TS301-15L | 15 | 39 | 18 | 38.0 | 21.0 | 8.0 | TS301-35 | 35 | 60 | 38 | 63.0 | 26.0 | 10.0 |
| TS301-16S | 16 | 28 | 16 | 29.5/30 | 21.0 | 8.0 | TS301-38 | 38 | 65 | 41 | 68.0 | 30.0 | 12.0 |
| TS301-16M | 16 | 32 | 18 | 29.5 | 21.0 | 8.0 | TS301-40 | 40 | 65 | 43 | 68.0 | 30.0 | 12.0 |
| TS301-16L | 16 | 39 | 18 | 38.0 | 21.0 | 8.0 | TS301-45 | 45 | 70 | 48 | 73.0 | 32.0 | 12.0 |
| TS301-16H | 16 | 32 | 16 | 30.0 | 29.0 | 10.0 | TS301-50 | 50 | 85 | 52 | 88.0 | 38.0 | 15.0 |
| TS301-17 | 17 | 39 | 19 | 42.0 | 21.0 | 8.0 | TS301-55 | 55 | 85 | 58 | 88.0 | 38.0 | 15.0 |
| TS301-18 | 18 | 39 | 20 | 42.0 | 21.0 | 8.0 | TS301-60 | 60 | 105 | 63 | 110.0 | 45.0 | 15.0 |
| | | | | | | | TS301-65 | 65 | 105 | \ | 110.0 | 47.0 | 15.0 |
| | | | | | | | TS301-70 | 70 | 105 | \ | 110.0 | 47.0 | 15.0 |

TRISUN 冠

轻型密封件
Single-Spring Mechanical Seal