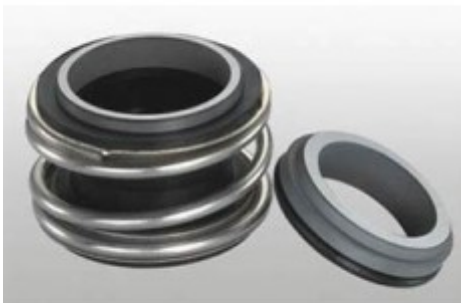


VANDENS SIURBLIAI, UAB
Įmonės kodas 144708571
PVM kodas LT447085716
Girulių g. 24, Šiauliai
LT78138, Lietuva



MECHANINIS SANDARIKLIS TSMG1-38 (G60) SIC/CE/VIT/SS304 - 108.56 €

Gamintojas

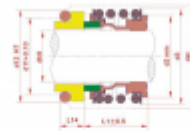


APRAŠYMAS:

Mechaninis sandariklis modelis MG1 gali pakeisti „AESSEAL B02“, „BURGMANN MG1“, „FLOWSERVE 190“ ir „MTU FG1“, kuris yra plačiai naudojamas „Hecker HN 410SU“ ir kitų rūšių siurbliams. Įprastas medžiagų derinys apima: anglis / keramika / nbr / ss304, anglies dervos / keramika / nbr / ss304 /, sic / sic / nbr / ss304, tc / tc / nbr / ss316 ir pan. **TECHNINIAI**

DUOMENYS

- TS MG1 (TSG) TS MG12 (TSG2)
- Sukamasis žiedas (anglis / SiC / TC)
- Stacionarus žiedas (keramikinis / SiC / TC)
- Antrinis sandariklis (NBR / EPDM / VITON)
- Spyruoklė ir kitos dalys (SUS304 / SUS316)
- Slėgis: ≤1,2 MPa
- Greitis: ≤10 m/s
- Temperatūra: -20 °C ~ + 120 °C



Patalmas dydis	Tilpumas				
	L	B ₁	B ₂	B ₃	B ₄
10	8	170	160	160	160
11	10	200	200	200	200
12	12	230	230	230	230
13	14	260	260	260	260
14	16	290	290	290	290
15	18	320	320	320	320
16	20	350	350	350	350
17	22	380	380	380	380
18	24	410	410	410	410
19	26	440	440	440	440
20	28	470	470	470	470
21	30	500	500	500	500
22	32	530	530	530	530
23	34	560	560	560	560
24	36	590	590	590	590
25	38	620	620	620	620
26	40	650	650	650	650
27	42	680	680	680	680
28	44	710	710	710	710
29	46	740	740	740	740
30	48	770	770	770	770
31	50	800	800	800	800
32	52	830	830	830	830
33	54	860	860	860	860
34	56	890	890	890	890
35	58	920	920	920	920
36	60	950	950	950	950
37	62	980	980	980	980
38	64	1010	1010	1010	1010
39	66	1040	1040	1040	1040
40	68	1070	1070	1070	1070
41	70	1100	1100	1100	1100
42	72	1130	1130	1130	1130
43	74	1160	1160	1160	1160
44	76	1190	1190	1190	1190
45	78	1220	1220	1220	1220
46	80	1250	1250	1250	1250
47	82	1280	1280	1280	1280
48	84	1310	1310	1310	1310
49	86	1340	1340	1340	1340
50	88	1370	1370	1370	1370
51	90	1400	1400	1400	1400
52	92	1430	1430	1430	1430
53	94	1460	1460	1460	1460
54	96	1490	1490	1490	1490
55	98	1520	1520	1520	1520
56	100	1550	1550	1550	1550

Gamintojas: [TRISUN](#) Sandariklio matmenys pateikti lentelėje:

TS MG1(TSG) TS MG12(TSG2)

技术参数:

压力: $\leq 1.2\text{MPa}$

线速度: $\leq 10\text{m/s}$

温度: $-20^{\circ}\text{C} \sim +120^{\circ}\text{C}$

Operating Limits

Pressure: $\leq 1.2\text{MPa}$

Speed: $\leq 10\text{m/s}$

Temperature: $-20^{\circ}\text{C} \sim +120^{\circ}\text{C}$



- 动环(石墨/碳化硅/碳化钨)
- 静环(陶瓷/碳化硅/碳化钨)
- 辅助密封(丁腈胶/三元乙丙胶/氟胶)
- 弹簧及其它金属件(不锈钢)



- Rotary Ring (Carbon/SiC/TC)
- Stationary Ring (Ceramic/SiC/TC)
- Secondary Seal (NBR/EPDM/VITON)
- Spring & Other Parts (SUS304/SUS316)

TS MG1					
Seal size d(mm)	d	d ₂	d ₃	d _{st}	l ₁
8	8	17.5	19.0	23	12.5
10	10	20.5	22.5	24	14.5
12	12	22.5	25.0	26	15.0
14	14	26.5	28.5	30	17.0
15	15	26.5	28.5	30	17.0
16	16	26.5	28.5	30	17.0
18	18	29.0	32.0	33	19.5
19	19	33.0	37.0	38	21.5
20	20	33.0	37.0	38	21.5
22	22	33.0	37.0	38	21.5
24	24	38.0	42.5	44	22.5
25	25	38.0	42.5	44	23.0
28	28	44.0	49.0	50	26.5
30	30	44.0	49.0	50	26.5
32	32	46.0	53.5	55	27.5
33	33	46.0	53.5	55	27.5
35	35	50.0	57.0	59	28.5
38	38	53.0	59.0	61	30.0
40	40	55.0	62.0	64	30.0
42	42	58.0	65.5	67	30.0
43	43	58.0	65.5	67	30.0
45	45	60.0	68.0	70	30.0
48	48	63.0	70.5	74	30.5
50	50	65.0	74.0	77	30.5
53	53	70.0	78.5	81	33.0
55	55	72.0	81.0	83	35.0
58	58	75.0	85.5	88	37.0
60	60	79.0	88.5	91	38.0
65	65	84.0	93.5	96	40.0
68	68	88.0	96.5	100	40.0
70	70	90.0	99.5	103	40.0
75	75	95.0	107.0	110	40.0
80	80	100.0	112.0	116	40.0
85	85	107.0	120.0	124	41.0
90	90	114.0	127.0	131	45.0
95	95	119.0	132.0	136	46.0
100	100	124.0	137.0	140	47.0

TS MG12					
Seal size d(mm)	d	d ₂	d _{st}	d ₃	l ₁
10	10	20.5	24	22.5	25.9
12	12	22.5	26	25.0	25.9
14	14	26.5	30	28.5	28.4
16	16	26.5	30	28.5	28.4
18	18	29.0	33	32.0	30.0
20	20	33.0	38	37.0	30.0
22	22	33.0	38	37.0	30.0
24	24	38.0	44	42.5	32.5
25	25	38.0	44	42.5	32.5
28	28	44.0	50	49.0	35.0
30	30	44.0	50	49.0	35.0
32	32	46.0	55	53.5	35.0
33	33	46.0	55	53.5	35.0
35	35	50.0	59	57.0	35.0
38	38	53.0	61	59.0	36.0
40	40	55.0	64	62.0	36.0
43	43	58.0	67	65.5	36.0
45	45	60.0	70	68.0	36.0
48	48	63.0	74	70.5	36.0
50	50	65.0	77	74.0	38.0
53	53	70.0	81	78.5	36.5
55	55	72.0	83	81.0	36.5
58	58	75.0	88	85.5	41.5
60	60	79.0	91	88.5	41.5
65	65	84.0	96	93.5	41.5
68	68	88.0	100	96.5	41.2
70	70	90.0	103	99.5	48.7
75	75	95.0	110	107.0	48.7
80	80	100.0	116	112.0	48.0
85	85	107.0	124	120.0	46.0
90	90	114.0	131	127.0	51.0
95	95	119.0	136	132.0	51.0
100	100	124.0	140	137.0	51.0