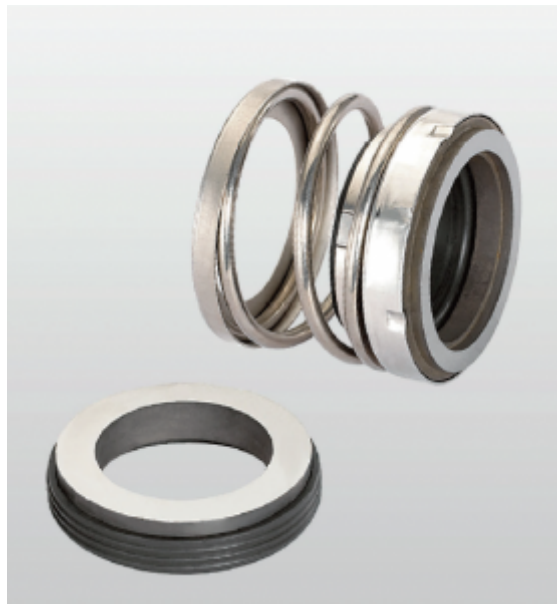


VANDENS SIURBLIAI, UAB  
Įmonės kodas 144708571  
PVM kodas LT447085716  
Girulių g. 24, Šiauliai  
LT78138, Lietuva



## MECHANINIS SANDARIKLIS TS43-30 SIC/SIC/NBR/SS304 - 87.24 €

Gamintojas

---

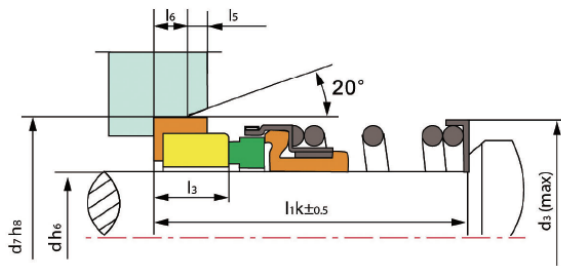


### APRAŠYMAS:

---

TS 43 vienos spyruoklės mechaninis sandariklis "TS 43" serijos sandariklių veikimo ribos: Slėgis:  $\leq 1\text{MPa}$  Greitis:  $\leq 10\text{ m / s}$  Temperatūra:  $-30\text{ }^\circ\text{C}$   $\square$   $+ 200\text{ }^\circ\text{C}$  Sukamasis žiedas (anglis / Sic / TC) Stacionarus žiedas (keramikinis / Sic / Tc) Antrinis sandariklis (NBR / Epdm / VITON) Spyruoklė ir kitos dalys (S.S / Sus304 / Sus316) Sandariklių matmenys atitinka ISO3069, DIN24960 ir GB6556

| Model   | d (mm) | d <sub>3</sub> | d <sub>7</sub> | l <sub>1k</sub> | l <sub>3</sub> | l <sub>5</sub> | l <sub>6</sub> |
|---------|--------|----------------|----------------|-----------------|----------------|----------------|----------------|
| TS43-30 | 30     | 44             | 45             | 42.5            | 10.0           | 2.0            | 5              |



Design Feature: Installation dimension conform to ISO3069,DIN24960 and GB6556



## TS 43

### Operating Limits

Pressure:  $\leq 1\text{MPa}$   
 Speed:  $\leq 10\text{ m/s}$   
 Temperature:  $-30^{\circ}\text{C} \sim +200^{\circ}\text{C}$

- Rotary Ring(Carbon/SiC/TC)
- Stationary Ring(Ceramic/SiC/TC)
- Secondary Seal(NBR/EPDM/VITON)
- Spring & Other Parts(S.S./SUS304/SUS316)

| Model   | d (mm) | d <sub>3</sub> | d <sub>7</sub> | l <sub>1k</sub> | l <sub>3</sub> | l <sub>5</sub> | l <sub>6</sub> |
|---------|--------|----------------|----------------|-----------------|----------------|----------------|----------------|
| TS43-10 | 10     | 20.6           | 21             | 32.5            | 6.0            | 1.5            | 4              |
| TS43-12 | 12     | 22             | 23             | 32.5            | 6.6            | 1.5            | 4              |
| TS43-14 | 14     | 24             | 25             | 35.0            | 8.0            | 1.5            | 4              |
| TS43-16 | 16     | 26             | 27             | 35.0            | 8.0            | 1.5            | 4              |
| TS43-18 | 18     | 32             | 33             | 37.5            | 10.0           | 2.0            | 5              |
| TS43-20 | 20     | 34             | 35             | 37.5            | 10.0           | 2.0            | 5              |
| TS43-22 | 22     | 37             | 37             | 37.5            | 10.0           | 2.0            | 5              |
| TS43-24 | 24     | 38             | 39             | 40.0            | 10.0           | 2.0            | 5              |
| TS43-25 | 25     | 39             | 40             | 40.0            | 10.0           | 2.0            | 5              |
| TS43-28 | 28     | 42             | 43             | 42.5            | 10.0           | 2.0            | 5              |
| TS43-30 | 30     | 44             | 45             | 42.5            | 10.0           | 2.0            | 5              |
| TS43-32 | 32     | 47             | 48             | 42.5            | 10.0           | 2.0            | 5              |
| TS43-33 | 33     | 47             | 48             | 42.5            | 10.0           | 2.0            | 5              |
| TS43-35 | 35     | 49             | 50             | 42.5            | 10.5           | 2.0            | 5              |
| TS43-38 | 38     | 54             | 56             | 45.0            | 11.0           | 2.0            | 6              |
| TS43-40 | 40     | 56             | 58             | 45.0            | 10.5           | 2.0            | 6              |
| TS43-43 | 43     | 59             | 61             | 45.0            | 11.0           | 2.0            | 6              |

| Model    | d (mm) | d <sub>3</sub> | d <sub>7</sub> | l <sub>1k</sub> | l <sub>3</sub> | l <sub>5</sub> | l <sub>6</sub> |
|----------|--------|----------------|----------------|-----------------|----------------|----------------|----------------|
| TS43-45  | 45     | 62             | 63             | 45.0            | 10.5           | 2.0            | 6              |
| TS43-48  | 48     | 64             | 66             | 45.0            | 10.5           | 2.0            | 6              |
| TS43-50  | 50     | 66             | 70             | 47.5            | 11.0           | 2.5            | 6              |
| TS43-53  | 53     | 69             | 73             | 47.5            | 11.5           | 2.5            | 6              |
| TS43-55  | 55     | 72             | 75             | 47.5            | 12.0           | 2.5            | 6              |
| TS43-58  | 58     | 80             | 78             | 52.5            | 12.0           | 2.5            | 6              |
| TS43-60  | 60     | 80             | 80             | 52.5            | 12.0           | 2.5            | 6              |
| TS43-63  | 63     | 83             | 83             | 52.5            | 12.0           | 2.5            | 6              |
| TS43-65  | 65     | 85             | 85             | 52.5            | 13.0           | 2.5            | 6              |
| TS43-68  | 68     | 88             | 90             | 52.5            | 11.3           | 2.5            | 7              |
| TS43-70  | 70     | 90             | 92             | 60.0            | 11.3           | 2.5            | 7              |
| TS43-75  | 75     | 99             | 97             | 60.0            | 11.3           | 2.5            | 7              |
| TS43-80  | 80     | 104            | 105            | 60.0            | 12.0           | 3.0            | 7              |
| TS43-85  | 85     | 108            | 110            | 60.0            | 14.0           | 3.0            | 7              |
| TS43-90  | 90     | 114            | 115            | 65.0            | 14.0           | 3.0            | 7              |
| TS43-95  | 95     | 119            | 120            | 65.0            | 14.0           | 3.0            | 7              |
| TS43-100 | 100    | 124            | 125            | 65.0            | 14.0           | 3.0            | 7              |