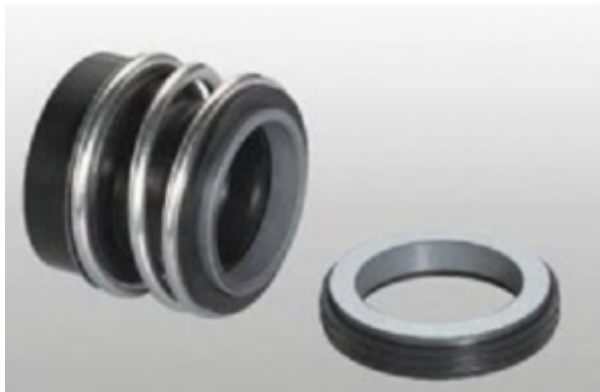


VANDENS SIURBLIAI, UAB  
Įmonės kodas 144708571  
PVM kodas LT447085716  
Girulių g. 24, Šiauliai  
LT78138, Lietuva



## **MECHANINIS SANDARIKLIS TSMG12-32 (G60) SIC/SIC/NBR/SS304 - 84.78 €**

### **Gamintojas**

---



### **APRAŠYMAS:**

---

Mechaninis sandariklis modelis MG1 gali pakeisti „AESSEAL B02“, „BURGMANN MG1“, „FLOWSERVE 190“ ir „MTU FG1“, kuris yra plačiai naudojamas „Hecker HN 410SU“ ir kitų rūšių siurbliams.

Įprastas medžiagų derinys apima: anglis / keramika / nbr / ss304, anglies dervos / keramika / nbr / ss304 /, sic / sic / nbr / ss304, tc / tc / nbr / ss316 ir pan.

Mechaninis sandariklis modelis MG12 gali pakeisti „AESSEAL B012“, „BURGMANN MG12“, „FLOWSERVE 192“ ir „MTU FG2“, kuris yra plačiai naudojamas „Hecker HN 410KU“ ir kitų rūšių siurbliams.

Įprastas medžiagų derinys apima: anglis / keramika / nbr / ss304, anglies dervos / keramika / nbr /

ss304 / , sic / sic / nbr / ss304, tc / tc / nbr / ss316 ir pan.

TS MG1 (TSG) TS MG12 (TSG2)

Sukamasis žiedas (anglis / SiC / TC)

Stacionarus žiedas (keramikinis / SiC / TC)

Antrinis sandariklis (NBR / EPDM / VITON)

Spyruoklė ir kitos dalys (SUS304 / SUS316)

TS MG1 TS MG12 serijos mechaninių sandariklių veikimo ribos:

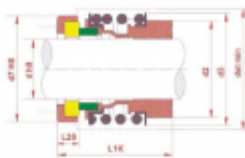
Slėgis:  $\leq 1,2\text{MPa}$

Greitis:  $\leq 10\text{m / s}$

Temperatūra:  $-20\text{ }^\circ\text{C} \sim + 120\text{ }^\circ\text{C}$

Gamintojas: [TRISUN](http://www.trisun.com)

Sandariklio matmenys pateikti lentelėje:



| Seal size<br>dmm | TS-MG12 |      |      |      |      |
|------------------|---------|------|------|------|------|
|                  | L1K     | L2K  | L3K  | L4K  | L5K  |
| 10               | 10      | 20.0 | 20.0 | 20.0 | 20.0 |
| 12               | 12      | 20.0 | 20.0 | 20.0 | 20.0 |
| 14               | 14      | 20.0 | 20.0 | 20.0 | 20.0 |
| 16               | 16      | 20.0 | 20.0 | 20.0 | 20.0 |
| 18               | 18      | 20.0 | 20.0 | 20.0 | 20.0 |
| 20               | 20      | 20.0 | 20.0 | 20.0 | 20.0 |
| 22               | 22      | 20.0 | 20.0 | 20.0 | 20.0 |
| 24               | 24      | 20.0 | 20.0 | 20.0 | 20.0 |
| 26               | 26      | 20.0 | 20.0 | 20.0 | 20.0 |
| 28               | 28      | 20.0 | 20.0 | 20.0 | 20.0 |
| 30               | 30      | 20.0 | 20.0 | 20.0 | 20.0 |
| 32               | 32      | 20.0 | 20.0 | 20.0 | 20.0 |
| 34               | 34      | 20.0 | 20.0 | 20.0 | 20.0 |
| 36               | 36      | 20.0 | 20.0 | 20.0 | 20.0 |
| 38               | 38      | 20.0 | 20.0 | 20.0 | 20.0 |
| 40               | 40      | 20.0 | 20.0 | 20.0 | 20.0 |
| 42               | 42      | 20.0 | 20.0 | 20.0 | 20.0 |
| 44               | 44      | 20.0 | 20.0 | 20.0 | 20.0 |
| 46               | 46      | 20.0 | 20.0 | 20.0 | 20.0 |
| 48               | 48      | 20.0 | 20.0 | 20.0 | 20.0 |
| 50               | 50      | 20.0 | 20.0 | 20.0 | 20.0 |
| 52               | 52      | 20.0 | 20.0 | 20.0 | 20.0 |
| 54               | 54      | 20.0 | 20.0 | 20.0 | 20.0 |
| 56               | 56      | 20.0 | 20.0 | 20.0 | 20.0 |
| 58               | 58      | 20.0 | 20.0 | 20.0 | 20.0 |
| 60               | 60      | 20.0 | 20.0 | 20.0 | 20.0 |
| 62               | 62      | 20.0 | 20.0 | 20.0 | 20.0 |
| 64               | 64      | 20.0 | 20.0 | 20.0 | 20.0 |
| 66               | 66      | 20.0 | 20.0 | 20.0 | 20.0 |
| 68               | 68      | 20.0 | 20.0 | 20.0 | 20.0 |
| 70               | 70      | 20.0 | 20.0 | 20.0 | 20.0 |
| 72               | 72      | 20.0 | 20.0 | 20.0 | 20.0 |
| 74               | 74      | 20.0 | 20.0 | 20.0 | 20.0 |
| 76               | 76      | 20.0 | 20.0 | 20.0 | 20.0 |
| 78               | 78      | 20.0 | 20.0 | 20.0 | 20.0 |
| 80               | 80      | 20.0 | 20.0 | 20.0 | 20.0 |
| 82               | 82      | 20.0 | 20.0 | 20.0 | 20.0 |
| 84               | 84      | 20.0 | 20.0 | 20.0 | 20.0 |
| 86               | 86      | 20.0 | 20.0 | 20.0 | 20.0 |
| 88               | 88      | 20.0 | 20.0 | 20.0 | 20.0 |
| 90               | 90      | 20.0 | 20.0 | 20.0 | 20.0 |
| 92               | 92      | 20.0 | 20.0 | 20.0 | 20.0 |
| 94               | 94      | 20.0 | 20.0 | 20.0 | 20.0 |
| 96               | 96      | 20.0 | 20.0 | 20.0 | 20.0 |
| 98               | 98      | 20.0 | 20.0 | 20.0 | 20.0 |
| 100              | 100     | 20.0 | 20.0 | 20.0 | 20.0 |

## TS MG1(TSG) TS MG12(TSG2)

技术参数:

压力:  $\leq 1.2\text{MPa}$

线速度:  $\leq 10\text{m/s}$

温度:  $-20^{\circ}\text{C} \sim +120^{\circ}\text{C}$

### Operating Limits

Pressure:  $\leq 1.2\text{MPa}$

Speed:  $\leq 10\text{m/s}$

Temperature:  $-20^{\circ}\text{C} \sim +120^{\circ}\text{C}$



- 动环(石墨/碳化硅/碳化钨)
- 静环(陶瓷/碳化硅/碳化钨)
- 辅助密封(丁腈胶/三元乙丙胶/氟胶)
- 弹簧及其它金属件(不锈钢)



- Rotary Ring (Carbon/SiC/TC)
- Stationary Ring (Ceramic/SiC/TC)
- Secondary Seal (NBR/EPDM/VITON)
- Spring & Other Parts (SUS304/SUS316)

| TS MG1             |     |                |                |                 |                |
|--------------------|-----|----------------|----------------|-----------------|----------------|
| Seal size<br>d(mm) | d   | d <sub>2</sub> | d <sub>3</sub> | d <sub>st</sub> | l <sub>1</sub> |
| 8                  | 8   | 17.5           | 19.0           | 23              | 12.5           |
| 10                 | 10  | 20.5           | 22.5           | 24              | 14.5           |
| 12                 | 12  | 22.5           | 25.0           | 26              | 15.0           |
| 14                 | 14  | 26.5           | 28.5           | 30              | 17.0           |
| 15                 | 15  | 26.5           | 28.5           | 30              | 17.0           |
| 16                 | 16  | 26.5           | 28.5           | 30              | 17.0           |
| 18                 | 18  | 29.0           | 32.0           | 33              | 19.5           |
| 19                 | 19  | 33.0           | 37.0           | 38              | 21.5           |
| 20                 | 20  | 33.0           | 37.0           | 38              | 21.5           |
| 22                 | 22  | 33.0           | 37.0           | 38              | 21.5           |
| 24                 | 24  | 38.0           | 42.5           | 44              | 22.5           |
| 25                 | 25  | 38.0           | 42.5           | 44              | 23.0           |
| 28                 | 28  | 44.0           | 49.0           | 50              | 26.5           |
| 30                 | 30  | 44.0           | 49.0           | 50              | 26.5           |
| 32                 | 32  | 46.0           | 53.5           | 55              | 27.5           |
| 33                 | 33  | 46.0           | 53.5           | 55              | 27.5           |
| 35                 | 35  | 50.0           | 57.0           | 59              | 28.5           |
| 38                 | 38  | 53.0           | 59.0           | 61              | 30.0           |
| 40                 | 40  | 55.0           | 62.0           | 64              | 30.0           |
| 42                 | 42  | 58.0           | 65.5           | 67              | 30.0           |
| 43                 | 43  | 58.0           | 65.5           | 67              | 30.0           |
| 45                 | 45  | 60.0           | 68.0           | 70              | 30.0           |
| 48                 | 48  | 63.0           | 70.5           | 74              | 30.5           |
| 50                 | 50  | 65.0           | 74.0           | 77              | 30.5           |
| 53                 | 53  | 70.0           | 78.5           | 81              | 33.0           |
| 55                 | 55  | 72.0           | 81.0           | 83              | 35.0           |
| 58                 | 58  | 75.0           | 85.5           | 88              | 37.0           |
| 60                 | 60  | 79.0           | 88.5           | 91              | 38.0           |
| 65                 | 65  | 84.0           | 93.5           | 96              | 40.0           |
| 68                 | 68  | 88.0           | 96.5           | 100             | 40.0           |
| 70                 | 70  | 90.0           | 99.5           | 103             | 40.0           |
| 75                 | 75  | 95.0           | 107.0          | 110             | 40.0           |
| 80                 | 80  | 100.0          | 112.0          | 116             | 40.0           |
| 85                 | 85  | 107.0          | 120.0          | 124             | 41.0           |
| 90                 | 90  | 114.0          | 127.0          | 131             | 45.0           |
| 95                 | 95  | 119.0          | 132.0          | 136             | 46.0           |
| 100                | 100 | 124.0          | 137.0          | 140             | 47.0           |

| TS MG12            |     |                |                 |                |                |
|--------------------|-----|----------------|-----------------|----------------|----------------|
| Seal size<br>d(mm) | d   | d <sub>2</sub> | d <sub>st</sub> | d <sub>3</sub> | l <sub>1</sub> |
| 10                 | 10  | 20.5           | 24              | 22.5           | 25.9           |
| 12                 | 12  | 22.5           | 26              | 25.0           | 25.9           |
| 14                 | 14  | 26.5           | 30              | 28.5           | 28.4           |
| 16                 | 16  | 26.5           | 30              | 28.5           | 28.4           |
| 18                 | 18  | 29.0           | 33              | 32.0           | 30.0           |
| 20                 | 20  | 33.0           | 38              | 37.0           | 30.0           |
| 22                 | 22  | 33.0           | 38              | 37.0           | 30.0           |
| 24                 | 24  | 38.0           | 44              | 42.5           | 32.5           |
| 25                 | 25  | 38.0           | 44              | 42.5           | 32.5           |
| 28                 | 28  | 44.0           | 50              | 49.0           | 35.0           |
| 30                 | 30  | 44.0           | 50              | 49.0           | 35.0           |
| 32                 | 32  | 46.0           | 55              | 53.5           | 35.0           |
| 33                 | 33  | 46.0           | 55              | 53.5           | 35.0           |
| 35                 | 35  | 50.0           | 59              | 57.0           | 35.0           |
| 38                 | 38  | 53.0           | 61              | 59.0           | 36.0           |
| 40                 | 40  | 55.0           | 64              | 62.0           | 36.0           |
| 43                 | 43  | 58.0           | 67              | 65.5           | 36.0           |
| 45                 | 45  | 60.0           | 70              | 68.0           | 36.0           |
| 48                 | 48  | 63.0           | 74              | 70.5           | 36.0           |
| 50                 | 50  | 65.0           | 77              | 74.0           | 38.0           |
| 53                 | 53  | 70.0           | 81              | 78.5           | 36.5           |
| 55                 | 55  | 72.0           | 83              | 81.0           | 36.5           |
| 58                 | 58  | 75.0           | 88              | 85.5           | 41.5           |
| 60                 | 60  | 79.0           | 91              | 88.5           | 41.5           |
| 65                 | 65  | 84.0           | 96              | 93.5           | 41.5           |
| 68                 | 68  | 88.0           | 100             | 96.5           | 41.2           |
| 70                 | 70  | 90.0           | 103             | 99.5           | 48.7           |
| 75                 | 75  | 95.0           | 110             | 107.0          | 48.7           |
| 80                 | 80  | 100.0          | 116             | 112.0          | 48.0           |
| 85                 | 85  | 107.0          | 124             | 120.0          | 46.0           |
| 90                 | 90  | 114.0          | 131             | 127.0          | 51.0           |
| 95                 | 95  | 119.0          | 136             | 132.0          | 51.0           |
| 100                | 100 | 124.0          | 140             | 137.0          | 51.0           |