

VANDENS SIURBLIAI, UAB
Įmonės kodas 144708571
PVM kodas LT447085716
Girulių g. 24, Šiauliai
LT78138, Lietuva

 vandens
SIURBLIAI
VANDUO BE RŪPESČIŲ



CEA370/2/D SIURBLYS - 1052.7 €

Gamintojas



APRAŠYMAS:

Lowara CEA 370/2/D ELP 23/40 monoblokas, vienpakopis, išcentrinis siurblys su ašiniu įsiurbimo ir radialiniu slėgio priedais iš nerūdijančio plieno, skirtas švaraus vandens tiekimui. **NAUDOJIMO SRITYS**

- Skirtas siurbti švarų vandenį, vidutinio cheminio aktyvumo skysčius be abrazyvinių dalelių ir pluoštinių intarpų.
- Naudojamas geriamojo vandens siurbimui ir vandens slėgio pakėlimui
- Montuojamas šildymo sistemose ir vandentiekio tinkluose
- Naudojamas vandens slėgiui automobilių plovyklų įrangoje padidinti

YPATYBĖS

- Lowara CEA siurblių serija pasižymi kompaktiškais matmenimis. Visuose modeliuose yra mechaniniai sandarikliai
- Siekiant padidinti darbo efektyvumą, sparnuotės buvo dedamos į uždarą korpusą
- Siurbimo ir išleidimo įvadai su vidiniu sriegiu
- Hidraulinė sistema yra tiesiogiai prijungta prie variklio

- Siekiant pailginti įrenginio eksploatavimo laiką, kontaktuojančios su terpe dalys pagamintos iš nerūdijančio plieno AISI 304: sparnuotės; rėmas; difuzorius; flanšas; užpildymo kamštis; velenas
- O-žiedas NBR mechaninis sandariklis, pagamintas iš keramikos arba grafito

SPECIFIKACIJOS

- Darbinis slėgis, Pmax: 8 bar
- Terpės temperatūra: ≤ 85 °C
- Aplinkos temperatūra: ≤ 40 °C
- Įtampa: vienfazė, 220 ± 15 % V arba 3 fazių 380 ± 10 % V
- Apsaugos laipsnis – klasė: IP55
- Izoliacijos klasė: F
- Darbo režimas: Lowara CEA siurbliai skirti nuolatiniam darbui
- Modelis: CEA370/2
- Įtampa: 3x230/400V 50Hz
- Galia kW/AG: 1,5 / 2
- Našumas Q [l/min]: 0-480
- Pakėlimo aukštis H [m]: 20,4 - 10,8
- Siurblio korpusas: AISI304
- Darbaratis: AISI304
- Mechaninis sandariklis
- Ø Įvadas: 2"
- Ø Išvadas: 1¼"

SPECIFIKACIJOS:

Maks. našumas (m3/val)	29
------------------------	----

Įtampa, V	380
-----------	-----

Maks. kėlimo aukštis (m.)	20.4
---------------------------	------

Variklio galingumas (kW)	1.5
--------------------------	-----

Single-impeller Centrifugal Electric Pumps

CEA-CEA(N) Series



MARKET SECTORS
CIVIL, AGRICULTURAL, INDUSTRIAL.

APPLICATIONS

- Version made of AISI 304**
- Handling of chemically and mechanically non-aggressive water and liquids (°).
 - Water supply.
 - Irrigation.

- Version made of AISI 316 (for aggressive liquids)**
- Water circulation (cold, hot, refrigerated).
 - For moderately aggressive liquids, version with NBR elastomers is available (SEA / -V). For aggressive liquids, please contact our sales network.

MOTOR

- Reverse osmosis (where demineralized water is used).
- Industrial washing.
- Thermal waters.
- Chlorine dispensing in swimming pools.
- Jewellery industry.
- Wire production.

the overload protection must be provided and installed by the user in the control panel.

Three-phase version: 220-240/380-415 V 50 Hz, 2 poles, the overload protection must be provided and installed by the user in the control panel.

- Condensate drain plugs in the standard version.

CONSTRUCTION CHARACTERISTICS

- Close-coupled, single-impeller centrifugal pump featuring axial suction and radial discharge.
- Compact construction, with pump coupled directly to motor; special motor shaft extension in common with the pump and supported by ball bearings.
- Rotating assembly with back pull-out design, eliminating the need to disconnect the pump body from the pipe line.
- Threaded suction and discharge ports (Rp ISO 7).
- High performance enclosed **Impeller** made of **AISI 304** stainless steel (**AISI 316** for N version).
- **Mechanical seal** with Ceramic/Carbon rings, NBR elastomers, EPDM for N version) other parts are made of AISI 304 stainless steel (AISI 316 for N version). Mounting dimensions according to EN 12756 (in DIN 24960) and ISO 3069.
- **O-ring** made of NBR (EPDM for N version).
- Mounting pedestal on pump body.

- Different voltages and frequencies.
- Different material for the mechanical seal and O-rings.

SPECIFICATIONS

PUMP

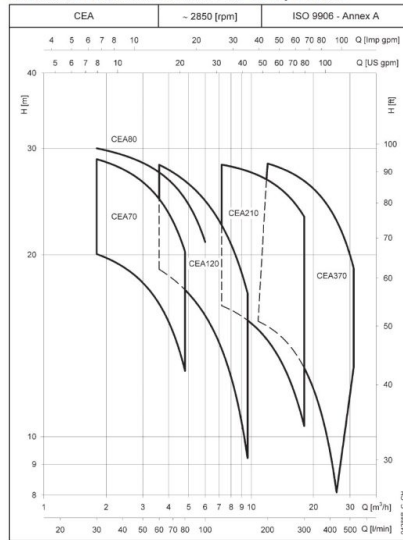
- **Delivery** up to 520 l/min (81 m³/h)
- **Head** up to 32 m
- **Temperature of pumped liquid:** -10°C to +85°C standard version, -10°C to +110°C (N and V versions).
- **Maximum operating pressure** 8 bar (PN 8).
- Counter-clockwise rotation facing the pump from the suction port.

MOTOR

- Asynchronous, squirrel cage rotor; close construction; external ventilation.
- **Protection class** IP55
- **Class** I (S) **Insulation**
- Performances to EN 60034-1 specifications.
- **Standard voltage**
- **Single-phase version:** 220-240 V 50 Hz, 2 poles, with automatic reset overload protection up to 1.5 kW. For higher powers:

Standard supplied IE2EX motors are compliant with Regulation (EC) no. 640/2009

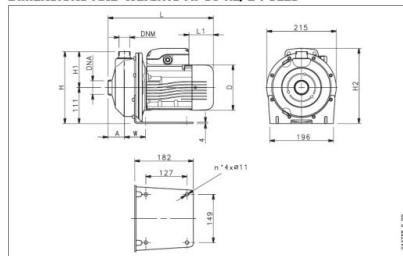
CEA-CEA(N) SERIES HYDRAULIC PERFORMANCE RANGE AT 50 Hz, 2 POLES



CEA-CEA(N) SERIES HYDRAULIC PERFORMANCE TABLE AT 50 Hz, 2 POLES

PUMP TYPE	RATED POWER (kW)	Q - DELIVERY																
		0	30	40	60	80	100	120	140	160	180	200	250	300	350	400	450	500
CEA90	0.37	0.5	37	28.3	19.3	16.6	12.8											
CEA70	0.37	0.35	31	18.8	17.1	24.1	20.2											
CEA120	0.75	1	32	30	27.4	26.7	21											
CEA210	0.37	0.75	31	18.8	17.1	15.9	14	11.8	10.3									
CEA370	0.9	1.2	31.8	28.2	26.3	24.6	23.4	20	17.3									
CEA105	1.1	1.5	20.8					16.5	16.1	15.6	15	14.4	13.6	10.4				
CEA150	1.1	1.5	20.8					16.7	16.3	15.9	15.3	14.8	14.3	14.4				
CEA180	1.5	2	25.5					24.8	24.5	24	23.6	23	21.3	19				
CEA210SP	1.8	2.8	29					28.2	27.9	27.5	27	26.6	25.1	23.1				
CEA270	1.1	1.5	16.3					15.5	14.3	13	11.4	9.4	8.1					
CEA370SP	1.5	2	20.4					19.1	18.3	17.2	15.8	14.1	13	10.8				
CEA105N	1.8	2.5	24.4					21.2	21	19.8	18.1	17.1	15.1	13.1				
CEA180N	3	4	30.3					28.3	27.5	26.5	25.3	23.8	22.8	21	19.0			

CEA-CEA(N) SERIES DIMENSIONS AND WEIGHTS AT 50 Hz, 2 POLES



PUMP TYPE	DIMENSIONS (mm)							DNM	DNM	WEIGHT	
	A	D	H	H1	H2	L	L1				
CEA90/3A	51	120	222	111	222	311	62	65	Rp 1/2	Rp 1	9.7
CEA70/3A	51	140	222	111	232	325	76	65	Rp 1/2	Rp 1	11.2
CEA120/3A	51	140	222	111	232	325	76	65	Rp 1/2	Rp 1	12.5
CEA210/3A	51	140	222	111	232	325	76	65	Rp 1/2	Rp 1	11.5
CEA370/3A	51	140	222	111	240	325	81	65	Rp 1/2	Rp 1	13
CEA105/3A	54	140	224	113	232	339	76	76	Rp 1/2	Rp 1 1/2	13
CEA150/3A	54	156	224	113	240	385	89	76	Rp 1/2	Rp 1 1/2	16.5
CEA180/3A	54	156	224	113	248	385	69	76	Rp 1/2	Rp 1 1/2	16.1
CEA210SP/3A	54	174	224	113	262	429	84	76	Rp 1/2	Rp 1 1/2	17
CEA270/3A	54	156	224	113	248	385	69	76	Rp 2	Rp 1 1/2	14
CEA370/3A	54	156	224	113	248	385	69	76	Rp 2	Rp 1 1/2	16.1
CEA105/3A	54	124	224	113	262	429	84	76	Rp 2	Rp 1 1/2	20
CEA150/3A	51	120	222	111	222	311	62	65	Rp 1/2	Rp 1	9.7
CEA180/3A	51	140	222	111	232	325	76	65	Rp 1/2	Rp 1	11.2
CEA210/3A	51	140	222	111	232	325	76	65	Rp 1/2	Rp 1	11.5
CEA270/3A	51	152	222	111	240	321	81	65	Rp 1/2	Rp 1	14.6
CEA370/3A	51	140	222	111	232	325	76	65	Rp 1/2	Rp 1	11.5
CEA120/3A	51	150	222	111	240	371	114	65	Rp 1/2	Rp 1	16.6
CEA150/3A	54	155	224	113	240	385	114	76	Rp 1/2	Rp 1 1/2	16.3
CEA210/3A	54	155	224	113	240	385	114	76	Rp 1/2	Rp 1 1/2	16.4
CEA270/3A	54	155	224	113	240	385	114	76	Rp 1/2	Rp 1 1/2	17.3
CEA370/3A	54	174	224	113	245	429	172	76	Rp 1/2	Rp 1 1/2	21
CEA105/3A	54	150	224	113	240	385	114	76	Rp 2	Rp 1 1/2	15.8
CEA150/3A	54	155	224	113	240	385	114	76	Rp 2	Rp 1 1/2	17.8
CEA180/3A	54	174	224	113	245	429	172	76	Rp 2	Rp 1 1/2	21
CEA210/3A	54	174	224	113	245	429	172	76	Rp 2	Rp 1 1/2	21