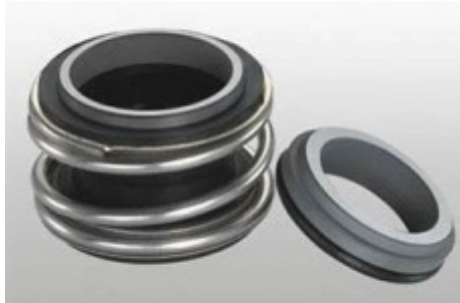


VANDENS SIURBLIAI, UAB  
Įmonės kodas 144708571  
PVM kodas LT447085716  
Girulių g. 24, Šiauliai  
LT78138, Lietuva



## **MECHANINIS SANDARIKLIS TSMG1-20 (G4) SIC/SIC/NBR/SS304 - 52.76 €**

### **Gamintojas**

---



### **APRAŠYMAS:**

---

Mechaninis sandariklis modelis MG1 gali pakeisti „AESSEAL B02“, „BURGMANN MG1“, „FLOWSERVE 190“ ir „MTU FG1“, kuris yra plačiai naudojamas „Hecker HN 410SU“ ir kitų rūšių siurbliams.

Įprastas medžiagų derinys apima: anglis / keramika / nbr / ss304, anglies dervos / keramika / nbr / ss304 /, sic / sic / nbr / ss304, tc / tc / nbr / ss316 ir pan.

Mechaninis sandariklis modelis MG12 gali pakeisti „AESSEAL B012“, „BURGMANN MG12“, „FLOWSERVE 192“ ir „MTU FG2“, kuris yra plačiai naudojamas „Hecker HN 410KU“ ir kitų rūšių siurbliams.

Įprastas medžiagų derinys apima: anglis / keramika / nbr / ss304, anglies dervos / keramika / nbr / ss304 /, sic / sic / nbr / ss304, tc / tc / nbr / ss316 ir pan.

TS MG1 (TSG) TS MG12 (TSG2)

Sukamasis žiedas (anglis / SiC / TC)  
 Stacionarus žiedas (keramikinis / SiC / TC)  
 Antrinis sandariklis (NBR / EPDM / VITON)  
 Spyruoklė ir kitos dalys (SUS304 / SUS316)

TS MG1 TS MG12 serijos mechaninių sandariklių veikimo ribos:

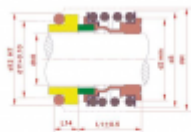
Slėgis:  $\leq 1,2\text{MPa}$

Greitis:  $\leq 10\text{m / s}$

Temperatūra:  $-20\text{ }^\circ\text{C} \sim + 120\text{ }^\circ\text{C}$

Gamintojas: [TRISUN](http://www.trisun.com)

Sandariklio matmenys pateikti lentelėje:



| Seal size<br>mm | D   | D <sub>1</sub> | D <sub>2</sub> | D <sub>3</sub> | L    |
|-----------------|-----|----------------|----------------|----------------|------|
| 8               | 8   | 8              | 8              | 8              | 10.0 |
| 10              | 10  | 10             | 10             | 10             | 10.0 |
| 12              | 12  | 12             | 12             | 12             | 10.0 |
| 14              | 14  | 14             | 14             | 14             | 10.0 |
| 16              | 16  | 16             | 16             | 16             | 10.0 |
| 18              | 18  | 18             | 18             | 18             | 10.0 |
| 20              | 20  | 20             | 20             | 20             | 10.0 |
| 22              | 22  | 22             | 22             | 22             | 10.0 |
| 24              | 24  | 24             | 24             | 24             | 10.0 |
| 26              | 26  | 26             | 26             | 26             | 10.0 |
| 28              | 28  | 28             | 28             | 28             | 10.0 |
| 30              | 30  | 30             | 30             | 30             | 10.0 |
| 32              | 32  | 32             | 32             | 32             | 10.0 |
| 34              | 34  | 34             | 34             | 34             | 10.0 |
| 36              | 36  | 36             | 36             | 36             | 10.0 |
| 38              | 38  | 38             | 38             | 38             | 10.0 |
| 40              | 40  | 40             | 40             | 40             | 10.0 |
| 42              | 42  | 42             | 42             | 42             | 10.0 |
| 44              | 44  | 44             | 44             | 44             | 10.0 |
| 46              | 46  | 46             | 46             | 46             | 10.0 |
| 48              | 48  | 48             | 48             | 48             | 10.0 |
| 50              | 50  | 50             | 50             | 50             | 10.0 |
| 52              | 52  | 52             | 52             | 52             | 10.0 |
| 54              | 54  | 54             | 54             | 54             | 10.0 |
| 56              | 56  | 56             | 56             | 56             | 10.0 |
| 58              | 58  | 58             | 58             | 58             | 10.0 |
| 60              | 60  | 60             | 60             | 60             | 10.0 |
| 62              | 62  | 62             | 62             | 62             | 10.0 |
| 64              | 64  | 64             | 64             | 64             | 10.0 |
| 66              | 66  | 66             | 66             | 66             | 10.0 |
| 68              | 68  | 68             | 68             | 68             | 10.0 |
| 70              | 70  | 70             | 70             | 70             | 10.0 |
| 72              | 72  | 72             | 72             | 72             | 10.0 |
| 74              | 74  | 74             | 74             | 74             | 10.0 |
| 76              | 76  | 76             | 76             | 76             | 10.0 |
| 78              | 78  | 78             | 78             | 78             | 10.0 |
| 80              | 80  | 80             | 80             | 80             | 10.0 |
| 82              | 82  | 82             | 82             | 82             | 10.0 |
| 84              | 84  | 84             | 84             | 84             | 10.0 |
| 86              | 86  | 86             | 86             | 86             | 10.0 |
| 88              | 88  | 88             | 88             | 88             | 10.0 |
| 90              | 90  | 90             | 90             | 90             | 10.0 |
| 92              | 92  | 92             | 92             | 92             | 10.0 |
| 94              | 94  | 94             | 94             | 94             | 10.0 |
| 96              | 96  | 96             | 96             | 96             | 10.0 |
| 98              | 98  | 98             | 98             | 98             | 10.0 |
| 100             | 100 | 100            | 100            | 100            | 10.0 |

## TS MG1(TSG) TS MG12(TSG2)

技术参数:

压力:  $\leq 1.2\text{MPa}$

线速度:  $\leq 10\text{m/s}$

温度:  $-20^{\circ}\text{C} \sim +120^{\circ}\text{C}$

### Operating Limits

Pressure:  $\leq 1.2\text{MPa}$

Speed:  $\leq 10\text{m/s}$

Temperature:  $-20^{\circ}\text{C} \sim +120^{\circ}\text{C}$



- 动环(石墨/碳化硅/碳化钨)
- 静环(陶瓷/碳化硅/碳化钨)
- 辅助密封(丁腈胶/三元乙丙胶/氟胶)
- 弹簧及其它金属件(不锈钢)



- Rotary Ring (Carbon/SiC/TC)
- Stationary Ring (Ceramic/SiC/TC)
- Secondary Seal (NBR/EPDM/VITON)
- Spring & Other Parts (SUS304/SUS316)

| TS MG1          |     |                |                |                 |                |
|-----------------|-----|----------------|----------------|-----------------|----------------|
| Seal size d(mm) | d   | d <sub>2</sub> | d <sub>3</sub> | d <sub>st</sub> | l <sub>1</sub> |
| 8               | 8   | 17.5           | 19.0           | 23              | 12.5           |
| 10              | 10  | 20.5           | 22.5           | 24              | 14.5           |
| 12              | 12  | 22.5           | 25.0           | 26              | 15.0           |
| 14              | 14  | 26.5           | 28.5           | 30              | 17.0           |
| 15              | 15  | 26.5           | 28.5           | 30              | 17.0           |
| 16              | 16  | 26.5           | 28.5           | 30              | 17.0           |
| 18              | 18  | 29.0           | 32.0           | 33              | 19.5           |
| 19              | 19  | 33.0           | 37.0           | 38              | 21.5           |
| 20              | 20  | 33.0           | 37.0           | 38              | 21.5           |
| 22              | 22  | 33.0           | 37.0           | 38              | 21.5           |
| 24              | 24  | 38.0           | 42.5           | 44              | 22.5           |
| 25              | 25  | 38.0           | 42.5           | 44              | 23.0           |
| 28              | 28  | 44.0           | 49.0           | 50              | 26.5           |
| 30              | 30  | 44.0           | 49.0           | 50              | 26.5           |
| 32              | 32  | 46.0           | 53.5           | 55              | 27.5           |
| 33              | 33  | 46.0           | 53.5           | 55              | 27.5           |
| 35              | 35  | 50.0           | 57.0           | 59              | 28.5           |
| 38              | 38  | 53.0           | 59.0           | 61              | 30.0           |
| 40              | 40  | 55.0           | 62.0           | 64              | 30.0           |
| 42              | 42  | 58.0           | 65.5           | 67              | 30.0           |
| 43              | 43  | 58.0           | 65.5           | 67              | 30.0           |
| 45              | 45  | 60.0           | 68.0           | 70              | 30.0           |
| 48              | 48  | 63.0           | 70.5           | 74              | 30.5           |
| 50              | 50  | 65.0           | 74.0           | 77              | 30.5           |
| 53              | 53  | 70.0           | 78.5           | 81              | 33.0           |
| 55              | 55  | 72.0           | 81.0           | 83              | 35.0           |
| 58              | 58  | 75.0           | 85.5           | 88              | 37.0           |
| 60              | 60  | 79.0           | 88.5           | 91              | 38.0           |
| 65              | 65  | 84.0           | 93.5           | 96              | 40.0           |
| 68              | 68  | 88.0           | 96.5           | 100             | 40.0           |
| 70              | 70  | 90.0           | 99.5           | 103             | 40.0           |
| 75              | 75  | 95.0           | 107.0          | 110             | 40.0           |
| 80              | 80  | 100.0          | 112.0          | 116             | 40.0           |
| 85              | 85  | 107.0          | 120.0          | 124             | 41.0           |
| 90              | 90  | 114.0          | 127.0          | 131             | 45.0           |
| 95              | 95  | 119.0          | 132.0          | 136             | 46.0           |
| 100             | 100 | 124.0          | 137.0          | 140             | 47.0           |

| TS MG12         |     |                |                 |                |                |
|-----------------|-----|----------------|-----------------|----------------|----------------|
| Seal size d(mm) | d   | d <sub>2</sub> | d <sub>st</sub> | d <sub>3</sub> | l <sub>1</sub> |
| 10              | 10  | 20.5           | 24              | 22.5           | 25.9           |
| 12              | 12  | 22.5           | 26              | 25.0           | 25.9           |
| 14              | 14  | 26.5           | 30              | 28.5           | 28.4           |
| 16              | 16  | 26.5           | 30              | 28.5           | 28.4           |
| 18              | 18  | 29.0           | 33              | 32.0           | 30.0           |
| 20              | 20  | 33.0           | 38              | 37.0           | 30.0           |
| 22              | 22  | 33.0           | 38              | 37.0           | 30.0           |
| 24              | 24  | 38.0           | 44              | 42.5           | 32.5           |
| 25              | 25  | 38.0           | 44              | 42.5           | 32.5           |
| 28              | 28  | 44.0           | 50              | 49.0           | 35.0           |
| 30              | 30  | 44.0           | 50              | 49.0           | 35.0           |
| 32              | 32  | 46.0           | 55              | 53.5           | 35.0           |
| 33              | 33  | 46.0           | 55              | 53.5           | 35.0           |
| 35              | 35  | 50.0           | 59              | 57.0           | 35.0           |
| 38              | 38  | 53.0           | 61              | 59.0           | 36.0           |
| 40              | 40  | 55.0           | 64              | 62.0           | 36.0           |
| 43              | 43  | 58.0           | 67              | 65.5           | 36.0           |
| 45              | 45  | 60.0           | 70              | 68.0           | 36.0           |
| 48              | 48  | 63.0           | 74              | 70.5           | 36.0           |
| 50              | 50  | 65.0           | 77              | 74.0           | 38.0           |
| 53              | 53  | 70.0           | 81              | 78.5           | 36.5           |
| 55              | 55  | 72.0           | 83              | 81.0           | 36.5           |
| 58              | 58  | 75.0           | 88              | 85.5           | 41.5           |
| 60              | 60  | 79.0           | 91              | 88.5           | 41.5           |
| 65              | 65  | 84.0           | 96              | 93.5           | 41.5           |
| 68              | 68  | 88.0           | 100             | 96.5           | 41.2           |
| 70              | 70  | 90.0           | 103             | 99.5           | 48.7           |
| 75              | 75  | 95.0           | 110             | 107.0          | 48.7           |
| 80              | 80  | 100.0          | 116             | 112.0          | 48.0           |
| 85              | 85  | 107.0          | 124             | 120.0          | 46.0           |
| 90              | 90  | 114.0          | 131             | 127.0          | 51.0           |
| 95              | 95  | 119.0          | 136             | 132.0          | 51.0           |
| 100             | 100 | 124.0          | 140             | 137.0          | 51.0           |