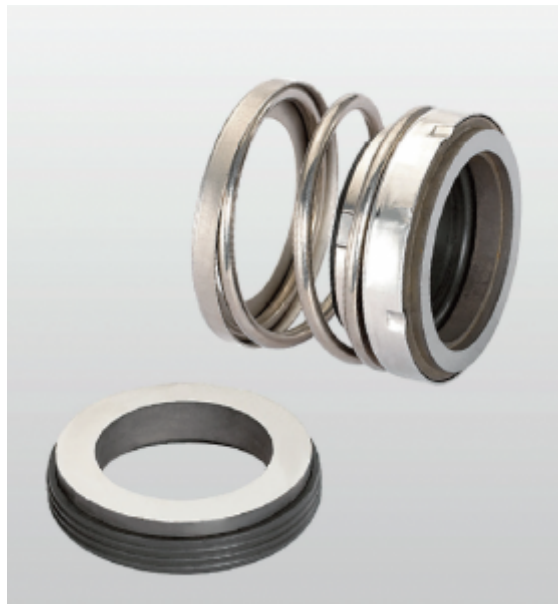


VANDENS SIURBLIAI, UAB
Įmonės kodas 144708571
PVM kodas LT447085716
Girulių g. 24, Šiauliai
LT78138, Lietuva



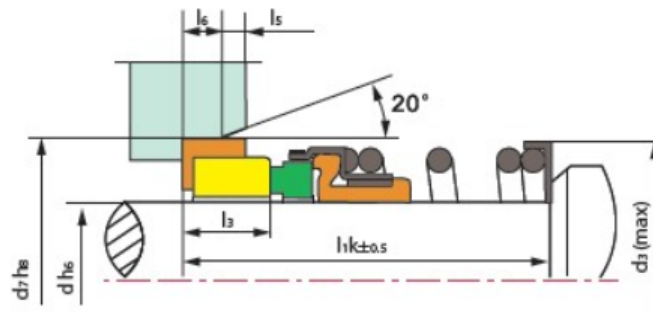
**MECHANINIS SANDARIKLIS TS43-30 CA/CE/NBR/SUS304 -
66.59 €**

Gamintojas



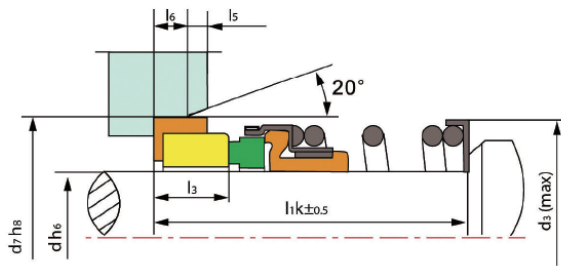
APRAŠYMAS:

TS 43 vienos spyruoklės mechaninis sandariklis "TS 43" serijos sandariklių veikimo ribos: Slėgis: ≤1MPa Greitis: ≤10 m / s Temperatūra: -30 °C □ + 200 °C Sukamasis žiedas (anglis / Sic / TC) Stacionarus žiedas (keramikinis / Sic / Tc) Antrinis sandariklis (NBR / Epdm / VITON) Spyruoklė ir kitos dalys (S.S / Sus304 / Sus316) Sandariklių matmenys atitinka ISO3069, DIN24960 ir GB6556

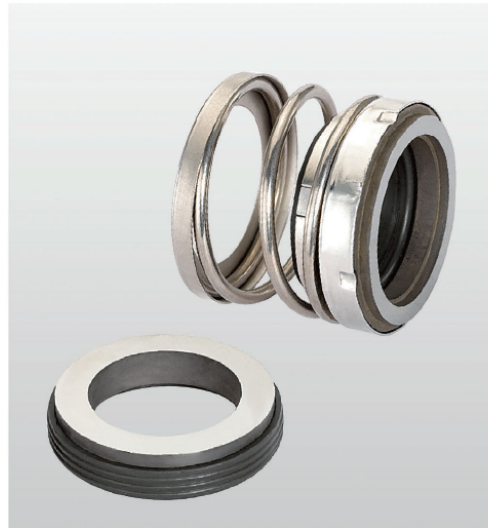


Model	d (mm)	d_3	d_7	l_{1k}	l_3	l_5	l_6
TS43-10	10	20.6	21	32.5	6	1.5	4
TS43-12	12	22	23	32.5	6.6	1.5	4
TS43-14	14	24	25	35	8	1.5	4
TS43-16	16	26	27	35	8	1.5	4
TS43-18	18	32	33	37.5	10	2	5
TS43-20	20	34	35	37.5	10	2	5
TS43-22	22	37	37	37.5	10	2	5
TS43-24	24	39	39	40	10	2	5
TS43-25	25	39	40	40	10	2	5
TS43-28	28	42	43	42.5	10	2	5
TS43-30	30	44	45	42.5	10	2	5
TS43-32	32	47	48	42.5	10	2	5
TS43-33	33	47	48	42.5	10	2	5
TS43-35	35	49	50	42.5	10.5	2	5
TS43-38	38	54	56	45	11	2	6
TS43-40	40	56	58	45	10.5	2	6
TS43-43	43	59	61	45	11	2	6

Model	d (mm)	d_3	d_7	l_{1k}	l_3	l_5	l_6
TS43-45	45	62	63	45	10.5	2	6
TS43-48	48	64	66	45	10.5	2	6
TS43-50	50	66	70	47.5	11	2.5	6
TS43-53	53	69	73	47.5	11.5	2.5	6
TS43-55	55	72	75	47.5	12	2.5	6
TS43-58	58	80	78	52.5	12	2.5	6
TS43-60	60	80	80	52.5	12	2.5	6
TS43-63	63	83	83	52.5	12	2.5	6
TS43-65	65	85	85	52.5	13	2.5	6
TS43-68	68	88	90	52.5	11.3	2.5	7
TS43-70	70	90	92	60	11.3	2.5	7
TS43-75	75	99	97	60	11.3	2.5	7
TS43-80	80	104	105	60	12	3	7
TS43-85	85	108	110	60	14	3	7
TS43-90	90	114	115	65	14	3	7
TS43-95	95	119	120	65	14	3	7
TS43-100	100	124	125	65	14	3	7



Design Feature: Installation dimension conform to ISO3069,DIN24960 and GB6556



TRISUN 研

轻型密封件
Single-Spring Mechanical Seal

TS 43

Operating Limits

Pressure: $\leq 1\text{MPa}$
 Speed: $\leq 10\text{ m/s}$
 Temperature: $-30^{\circ}\text{C} \sim +200^{\circ}\text{C}$

- Rotary Ring(Carbon/SiC/TC)
- Stationary Ring(Ceramic/SiC/TC)
- Secondary Seal(NBR/EPDM/VITON)
- Spring & Other Parts(S.S./SUS304/SUS316)

Model	d (mm)	d ₃	d ₇	l _{1k}	l ₃	l ₅	l ₆
TS43-10	10	20.6	21	32.5	6.0	1.5	4
TS43-12	12	22	23	32.5	6.6	1.5	4
TS43-14	14	24	25	35.0	8.0	1.5	4
TS43-16	16	26	27	35.0	8.0	1.5	4
TS43-18	18	32	33	37.5	10.0	2.0	5
TS43-20	20	34	35	37.5	10.0	2.0	5
TS43-22	22	37	37	37.5	10.0	2.0	5
TS43-24	24	38	39	40.0	10.0	2.0	5
TS43-25	25	39	40	40.0	10.0	2.0	5
TS43-28	28	42	43	42.5	10.0	2.0	5
TS43-30	30	44	45	42.5	10.0	2.0	5
TS43-32	32	47	48	42.5	10.0	2.0	5
TS43-33	33	47	48	42.5	10.0	2.0	5
TS43-35	35	49	50	42.5	10.5	2.0	5
TS43-38	38	54	56	45.0	11.0	2.0	6
TS43-40	40	56	58	45.0	10.5	2.0	6
TS43-43	43	59	61	45.0	11.0	2.0	6

Model	d (mm)	d ₃	d ₇	l _{1k}	l ₃	l ₅	l ₆
TS43-45	45	62	63	45.0	10.5	2.0	6
TS43-48	48	64	66	45.0	10.5	2.0	6
TS43-50	50	66	70	47.5	11.0	2.5	6
TS43-53	53	69	73	47.5	11.5	2.5	6
TS43-55	55	72	75	47.5	12.0	2.5	6
TS43-58	58	80	78	52.5	12.0	2.5	6
TS43-60	60	80	80	52.5	12.0	2.5	6
TS43-63	63	83	83	52.5	12.0	2.5	6
TS43-65	65	85	85	52.5	13.0	2.5	6
TS43-68	68	88	90	52.5	11.3	2.5	7
TS43-70	70	90	92	60.0	11.3	2.5	7
TS43-75	75	99	97	60.0	11.3	2.5	7
TS43-80	80	104	105	60.0	12.0	3.0	7
TS43-85	85	108	110	60.0	14.0	3.0	7
TS43-90	90	114	115	65.0	14.0	3.0	7
TS43-95	95	119	120	65.0	14.0	3.0	7
TS43-100	100	124	125	65.0	14.0	3.0	7