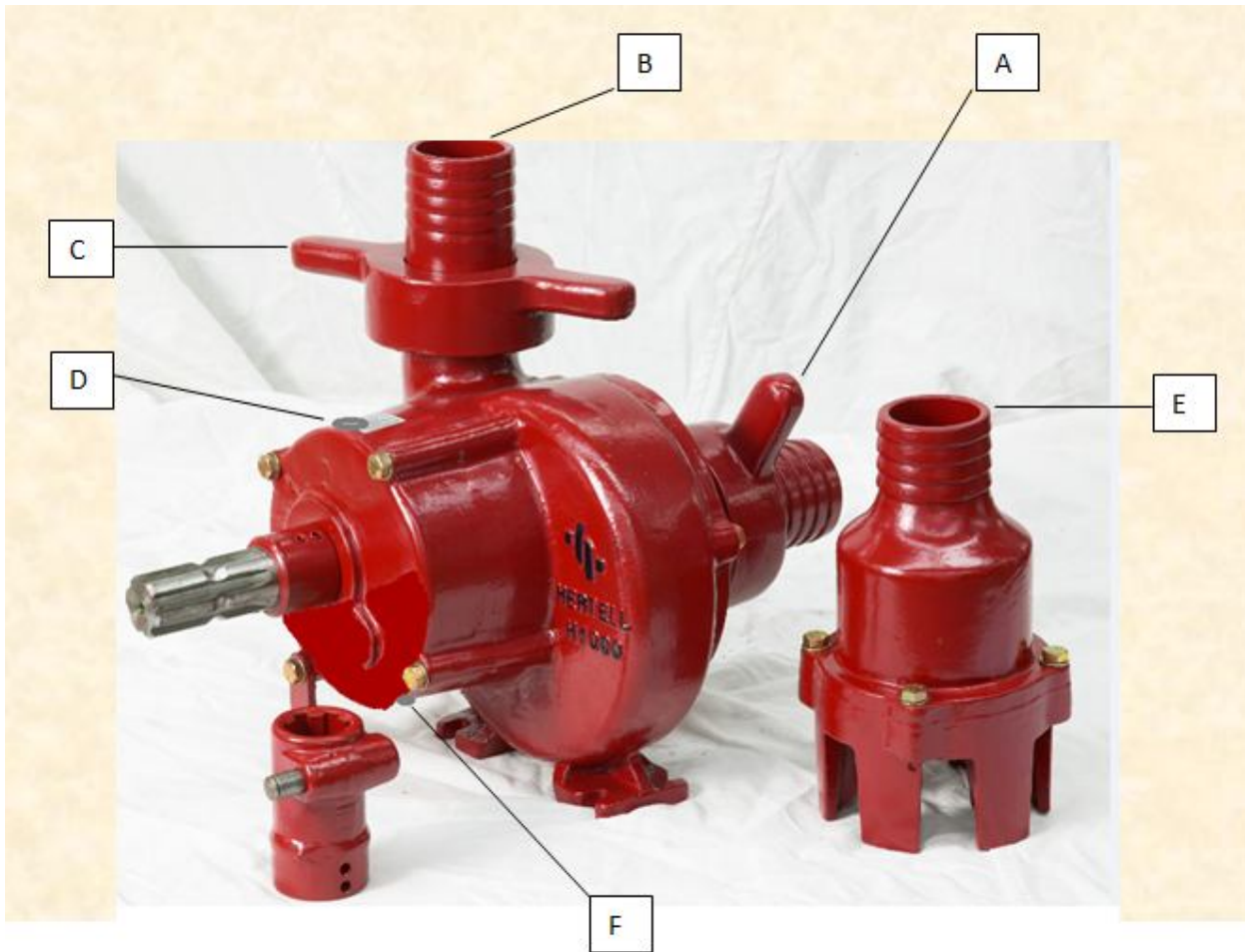




H-1000 CENTRIFUGAL PUMP

HERTELL S.COOP.

1.- OPERATION:



USE & CARE FOR HERTELL H - 1000 CENTRIFUGAL PUMP

CENTRIFUGAL PUMP FOR LIFTING & PUMPING
SEWAGE WATER & LIQUID SLURRIES

PTO - DRIVE: 540 RPM. Running direction: Counter - clockwise

START WORKING

- Connect the aspiration hose to the coupling A and to the foot valve E.
- Connect the impulsion hose to the coupling B.
- Prior to use, loosen flange C and fill up the pump and the aspiration hose, taking care that the foot valve is in vertical position in order to guarantee correct priming.
- Should the pump hang from the PTO, release it with the chain to any fixed part so as to prevent the pump turning.

- Maximal suction height: 5m / 16 ft.

MAINTENANCE

- Change gear box oil (SAE 90) every 500 operations. Filling up, Plug D. Emptying, Plug F. Volume: 0,5 litres.

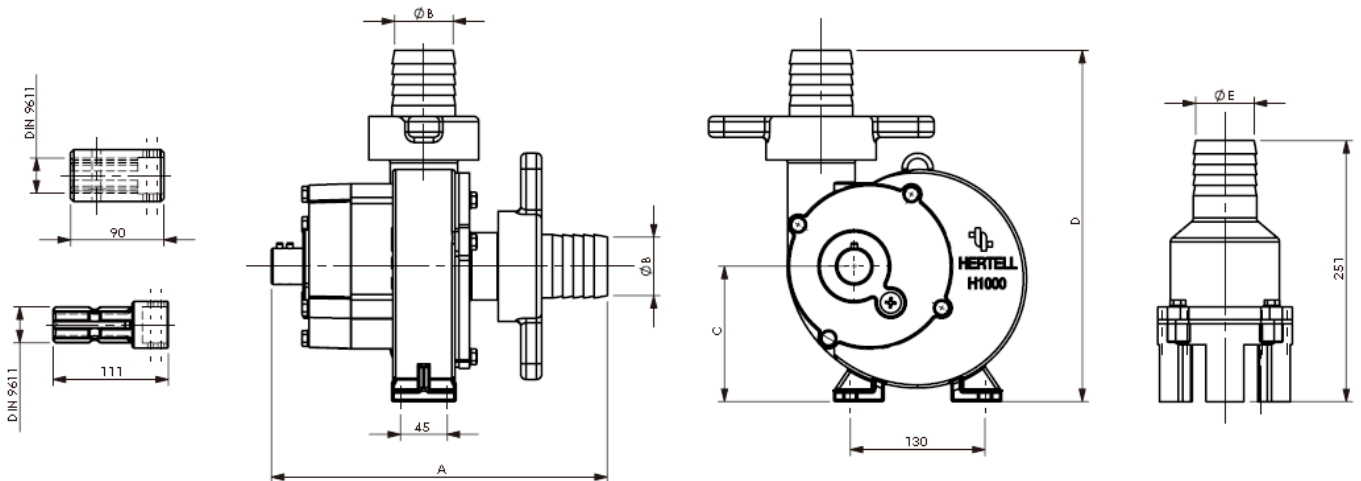
2.- CHARACTERISTICS & TECHNICAL DATA

- Entirely made of cast iron GG-25.
- Delivered with a foot valve.
- Driven directly by the PTO-shaft of the tractor or by gear shaft.
- Pump and hose have to be primed.

- Max. Flow rate: 1.000 L./min. (60 m³/hour)
- Max. Pressure: 2.0 bar
- Suction height: 5 m / 16 ft.
- Hose ø: 60 mm / 2,5"
- R.p.m.: 540
- Power requirement: 6 KW./ 8 HP.
- Weight 26 Kg. (complete)

■ Dimensions:

DIMENSIONES - DIMENSIONS - ABMESSUNGEN					
	A	B	C	D	E
	324	60	130	340	60



■ Flow rate:

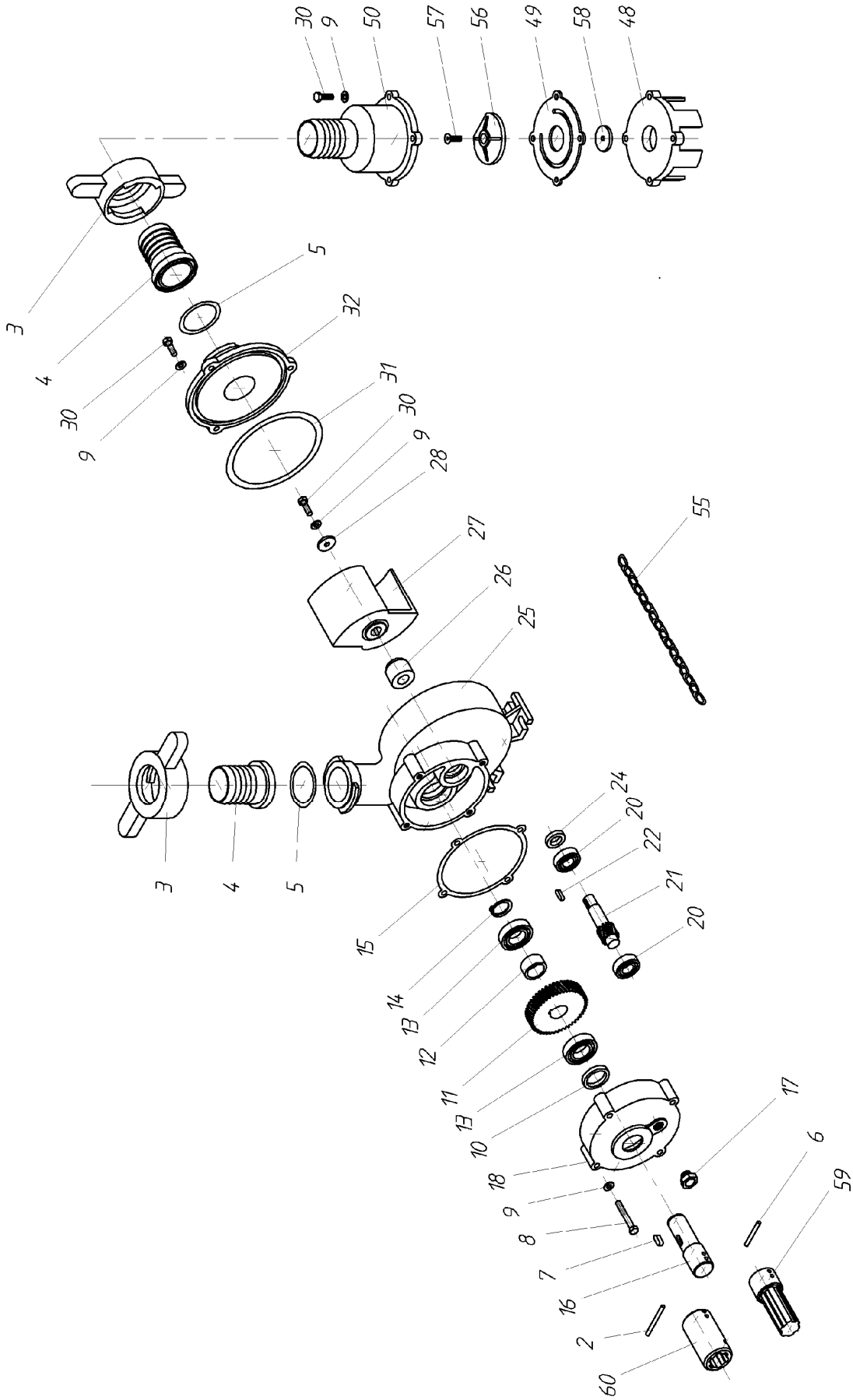
FLOW RATE						
Kg/cm ²	0,2	0,5	0,8	1,4	1,7	2,0
L/min	1000	883	700	350	175	0

3.- APPLICATIONS:



Used for water transport, irrigations with of high flow need, extraction of light slurries, cleaning of wells, racking sewage water, etc...

4.- SPARE PARTS



SPARE PARTS LIST. H-1000.

Ref.	Denomination
04H1000002	N. 2. Pin for H-1000 6x45
04H1000003	N. 3. Flange for H-1000
04H1000004	N. 4. Hose coupling for H-1000
04H1000005	N. 5. O-Ring for H-1000
04H1000006	N. 6. Pin for H-1000 6x50
04H1000007	N. 7. Key for H-1000 8x7x20
04H1000008	N. 8. Screw for H-1000
04H1000009	N. 9. Washer for H-1000
04H1000010	N.10. Seal for H-1000 35x45x7
04H1000011	N.11. Gear for H-1000
04H1000012	N.12. Spacer bushing for H-1000
04H1000013	N.13. Bearing for H-1000 6006
04H1000014	N.14. Safety ring for H-1000
04H1000015	N.15. Gasket for H-1000
04H1000016	N.16. Axle for H-1000
04H1000017	N.17. Plug for H-1000
04H1000018	N.18. Gearbox cover for H-1000
04H1000020	N.20. Bearing for H-1000 6004
04H1000021	N.21. Gear shaft for H-1000
04H1000022	N.22. Key for H-1000 6x6x20
04H1000024	N.24. Seal for H-1000 20x32x7
04H1000025	N.25. Body for H-1000
04H1000026	N.26. Mechanical seal for H-1000
04H1000027	N.27. Impeller for H-1000
04H1000028	N.28. Washer for H-1000
04H1000030	N.30. Screw for H-1000
04H1000031	N.31. Gasket for H-1000
04H1000032	N.32. Cover for H-1000
04H1000048	N.48. Foot valve -lower portion- H-1000
04H1000049	N.49. Plug rubber gasket H-1000
04H1000050	N.50. Foot valve -upper portion- H-1000
04H1000051	N.51. Complete Footvalve H-1000
04H1000055	N.55. Chain for H-1000
04H1000056	N.56. Plug for H-1000
04H1000057	N.57. Screw for H-1000
04H1000058	N.58. Foot valve washer H-1000
04H1000059	N.59. Male coupling for H-1000
04H1000060	N.60. Female coupling for H-1000

HERTELL S.COOP.

Industrialdea 2
20267 Ikaztegieta

SPAIN

Tel: + 34 943653240

Fax: + 34 943653332

E-mail: info@hertell.net

<http://www.hertell.net>