

Application

- Can be used to transfer clean water or other liquids similar to water in physical and chemical properties
- Suitable for lifting water from the well, sprinkling irrigation in garden, pressure boosting of running water, and supporting equipment etc.

Pump

- Cast iron pump body and support under special anti-rust treatment
- Stainless steel impeller
- AISI 304 shaft
- Max. liquid temperature: +60°C
- Max. suction: +40 m

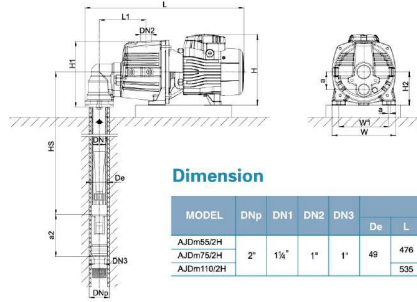
Motor

- C&U bearing
- Motor with copper winding
- Built-in thermal protector for single phase motor
- Insulation class: F
- Protection class: IPX4
- Max. ambient temperature: +40°C

Identification Code

A JD m-55/2 H

- High Head
- Inlet Diameter (")
- Power (X10 W)
- Single Phase Motor (Omitted for three-phase motor)
- Jet Pump for Deep Well
- LEO Product Style



Dimension

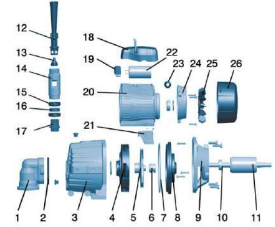
MODEL	DNp	DN1	DN2	DN3	DIMENSIONS (mm)													
					De	L	H	W	L1	H1	H2	W1	a	a2	S			
AJDm55/2H	2"	1 1/4"	1"	1"	49	476	212	190	140	204	110	150		63	128	10		
AJDm75/2H					535	227	206	153	211	112	166							
AJDm110/2H																		

Technical Data

MODEL	POWER (kW) (hp)	HS (m)	Q (l/min)	H (m)																										
				0	2	4	6	8	10	12	14	16	18	20	22	24	26	28	30											
AJDm55/2H	0.55 (0.75)	15	37	33	30	27	25	23	21	19	17	15	13	-	-	-	-	-	-	-	-	-	-	-	-	-	-	-	-	
AJDm75/2H	0.75 (1)	15	47	43	40	37	34	31	29	27	25	23	21	19	17	-	-	-	-	-	-	-	-	-	-	-	-	-	-	-
AJDm110/2H	1.1 (1.5)	15	70	65	61	57	53	50	47	44	42	40	38	36	34	32	28	28	-	-	-	-	-	-	-	-	-	-	-	-
AJDm55/2H	0.55 (0.75)	20	30	26	23	21	19	17	15	13	-	-	-	-	-	-	-	-	-	-	-	-	-	-	-	-	-	-	-	-
AJDm75/2H	0.75 (1)	20	39	36	33	30	27	24	22	20	18	17	-	-	-	-	-	-	-	-	-	-	-	-	-	-	-	-	-	-
AJDm110/2H	1.1 (1.5)	20	62	57	53	49	46	43	40	38	36	34	32	28	28	-	-	-	-	-	-	-	-	-	-	-	-	-	-	-
AJDm55/2H	0.55 (0.75)	25	23	19	16	14	12	-	-	-	-	-	-	-	-	-	-	-	-	-	-	-	-	-	-	-	-	-	-	-
AJDm75/2H	0.75 (1)	25	32	29	26	23	20	18	16	-	-	-	-	-	-	-	-	-	-	-	-	-	-	-	-	-	-	-	-	-
AJDm110/2H	1.1 (1.5)	25	54	49	45	42	39	36	33	31	29	27	-	-	-	-	-	-	-	-	-	-	-	-	-	-	-	-	-	-
AJDm55/2H	0.55 (0.75)	30	16	13	-	-	-	-	-	-	-	-	-	-	-	-	-	-	-	-	-	-	-	-	-	-	-	-	-	-
AJDm75/2H	0.75 (1)	30	25	22	19	16	-	-	-	-	-	-	-	-	-	-	-	-	-	-	-	-	-	-	-	-	-	-	-	-
AJDm110/2H	1.1 (1.5)	30	46	42	38	35	32	29	27	-	-	-	-	-	-	-	-	-	-	-	-	-	-	-	-	-	-	-	-	-
AJDm55/2H	0.75 (1)	35	18	15	-	-	-	-	-	-	-	-	-	-	-	-	-	-	-	-	-	-	-	-	-	-	-	-	-	-
AJDm75/2H	0.75 (1)	35	39	35	31	28	-	-	-	-	-	-	-	-	-	-	-	-	-	-	-	-	-	-	-	-	-	-	-	-
AJDm110/2H	1.1 (1.5)	35	32	28	-	-	-	-	-	-	-	-	-	-	-	-	-	-	-	-	-	-	-	-	-	-	-	-	-	-

Materials Table

No.	Part	Material	No.	Part	Material
1	Elbow	HT200	14	Exactor	HT200
2	Gasket seal	NBR	15	Sealing cup	NBR
3	Pump body	HT200	16	Copper sheathing	HPB59-1
4	Motor	PPG	17	Copper sleeve	HPB59-1
5	Impeller	AISI 304	18	Terminal box	PA6-GE20
6	Mechanical seal	Carbon/Ceramic	19	Terminal board	PC
7	O-ring	NBR	20	Stator	
8	Support cover	AISI 304/HT200	21	Motor foot	PA6
9	Support	ZL102	22	Capacitor	
10	Bearing		23	Cable holder	
11	Rotor		24	Rear cover	ZL102
12	Vertical tube	PPG	25	Fan	PP
13	Nozzle	PPG	26	Fan cover	PP



Package Information

MODEL	WG (kg)	L (mm)	W (mm)	H (mm)	Quantity (PCS/20' TEU)
AJDm55/2H	15.65	500	215	240	1033
AJDm75/2H	18.9	500	215	240	1033
AJDm110/2H	21.95	585	230	265	728

