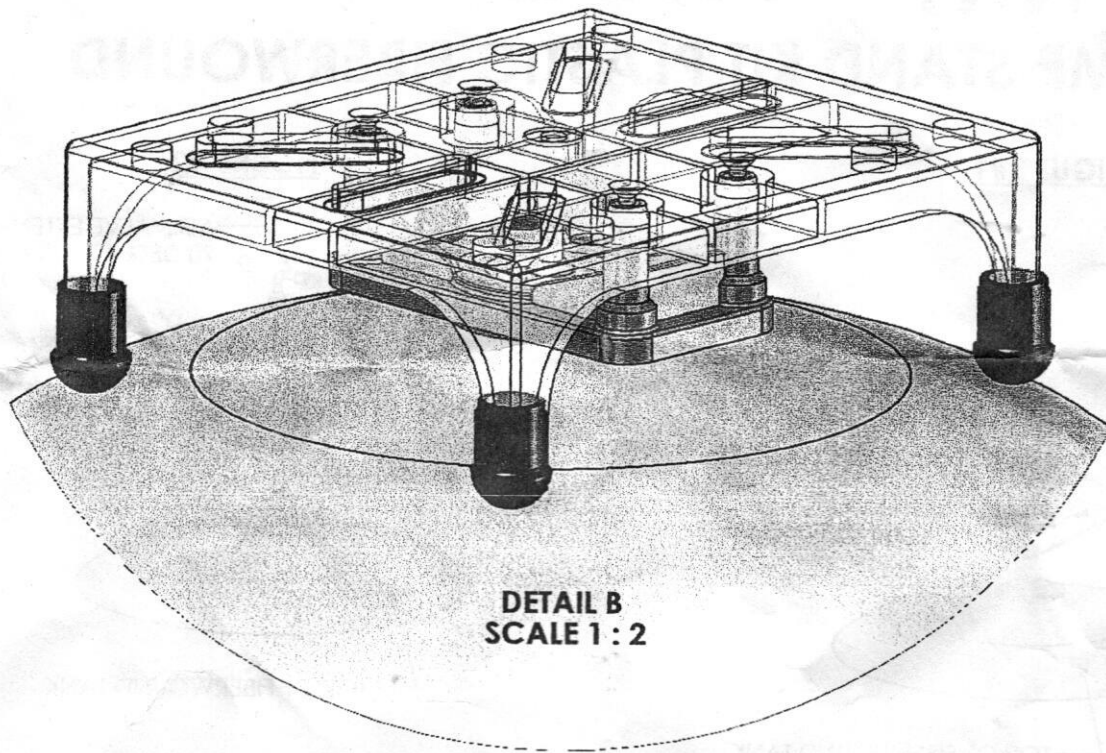


FIGURE #5



RULES FOR SAFE OPERATION

- This is a diaphragm type pressure tank for use on a cold, well water system. The system must be protected by a suitable relief valve.

WARNING: FAILURE TO INSTALL A RELIEF VALVE MAY RESULT IN TANK EXPLOSION IN THE EVENT OF A SYSTEM MALFUNCTION, RESULTING IN PROPERTY DAMAGE, SERIOUS PERSONAL INJURY OR DEATH.

- Install the expansion tank at a location to prevent water damage due to water leaks.
- The manufacturer is not responsible for any water damage in connection with this expansion tank.
- Be sure that electric power to the pump or control box is disconnected before installing or servicing this tank or water system.
- Installation must be in accordance with local or state plumbing codes.
- Be sure to protect tank, piping and all system components from freezing temperatures.
- If diaphragm tank is replacing a plain steel galvanized tank be sure to remove existing air volume controls, and remove or plug any bleeder valves, sniffer valves, etc.

Check tank precharge with ordinary tire gauge.
Pre-charge should be equal to, or 2 psi below, pressure switch cut-in setting.

