

DP微型隔膜泵 DP miniature diaphragm pump

用途 Purpose

- 1、适用于家用自来水增压、汽车冲洗、轮船上海水淡化。
 - 2、适用于反渗透纯水机、水处理设备、过滤机、喷雾装置、化工计量加液、及卫生、环保、印刷等行业中使用。
- 1、To increase the pressure of the house water supplier, facilitate the auto hydro-cleaning, and seawater desalt on the boat.
 - 2、Be the same with the water purify by filter, water refine equipment, filter, sprayer serve and supply measure in various industry say chemical, hygiene, environmental protecting, and printing etc.



特点 Product feature

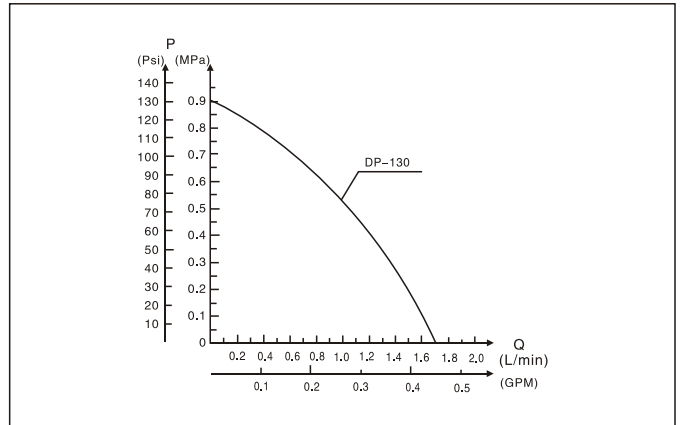
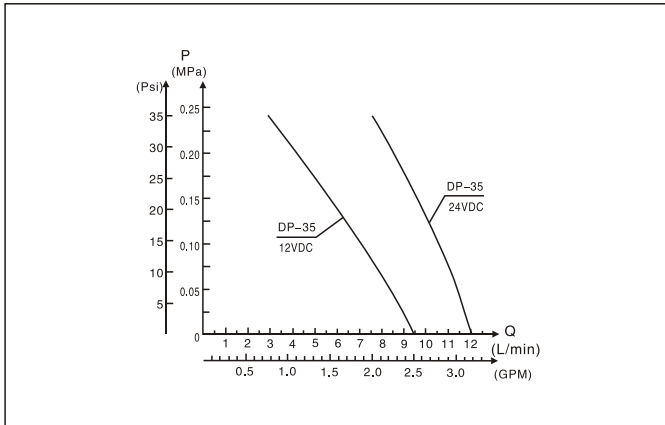
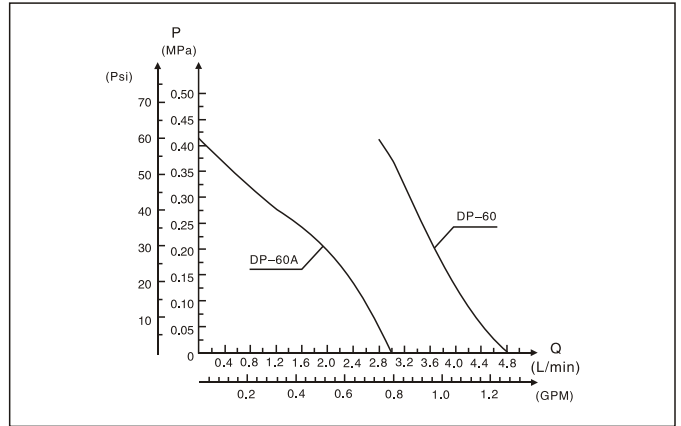
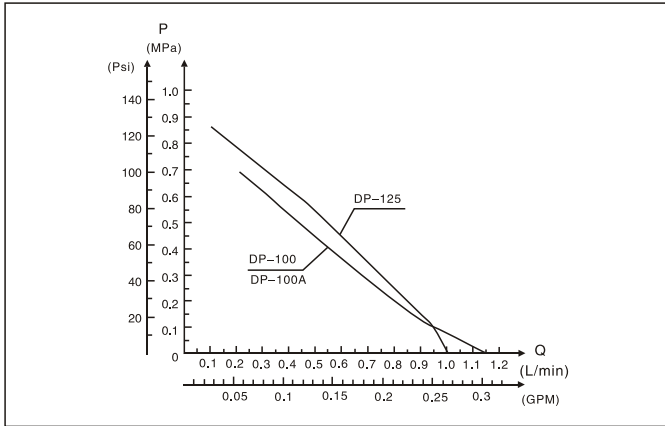
- 噪音低、耐腐蚀、压力高，自吸高度5m。
- 介质温度可达60℃。
- 允许干运转。
- 内装压力开关以保护泵运转时不受损坏。
- 内装溢流阀控制泵的正常运行。
- 拆装方便。
- 采用安全低电压，保证人身安全。
- Low sound , corruption proof, high pressure driven power, auto-suck 5m maximal.
- Temperature of medium at 60℃ maximal.
- Dehydration performance permitted.
- Self-serve switch which control by pressure test make sure the water pump free from damage on its performing.
- Inne spilling valve insure it performance the regular.
- Easily disassemble and assemble.
- Low voltage supply avoid the human threaten.

技术参数 Technical parameter

型号 Model	电压 Voltage (VDC)	最大电流 Maximal (A)	最大流量 Maxcapacity GPM(LPM)	转速 Revolution (rpm)	最高压力 Max pressure (Mpa)	吸程 Suction Course	调压开关 Psi(MPa)	功率 Power (W)
DP-130	24	1.2	0.45(1.7)	470	130(0.90)	5	/	15
DP-125	24	1.0	0.26(1.0)	375	125(0.86)	5	125(0.86)	10
DP-100	24	1.1	0.32(1.2)	375	100(0.68)	5	100(0.68)	10
DP-100A	24	1.1	0.32(1.2)	375	100(0.68)	5	/	10
DP-60	24	3.0	1.3(5.0)	1200	60(0.42)	5	60(0.42)	40
	12	6.0	1.3(5.0)	1200	60(0.42)	5	60(0.42)	40
DP-60A	12	3.5	0.8(3.0)	375	60(0.42)	5	/	20
DP-35	24	4.8	3.2(12)	1300	35(0.24)	5	35(0.24)	40
	12	7	2.5(9.5)	1200	35(0.24)	5	35(0.24)	40

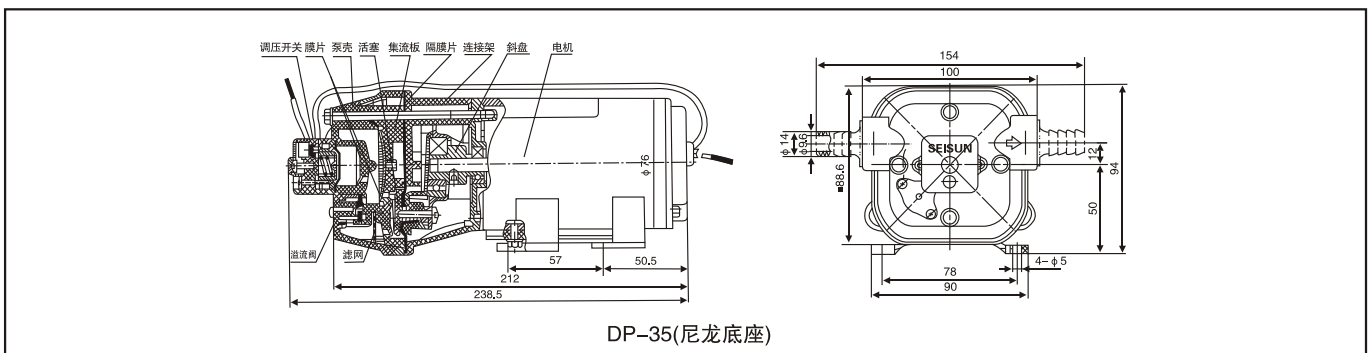
- 注：1、DP-130，DP-125，DP-100等规格可配24V的交流电源。
 2、单位说明：GPM-加仑/分，LPM-升/分，PSI-磅/平方英寸。
 3、单位换算：1美加仑=3.785升 1MPa=145psi
 1.DP-130,DP-125,DP-100could be facilitated by the alternating current at 24V.
 2.Index: GMP-gal/min./,LPM-liter/min,PSI-pound/square inch.
 3.Conversion formulae: 1 gal/3.78Litres 1MPa=145pis

◆ 压力-流量曲线 Pressure-turnoff chart

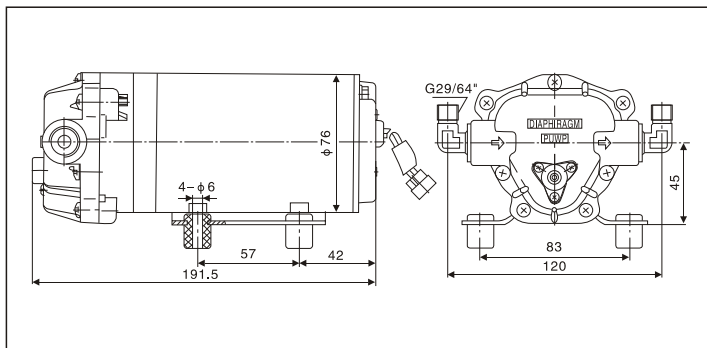


◆ 零部件材料和安装尺寸

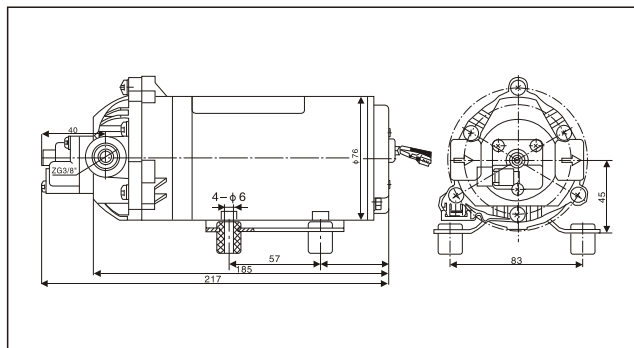
零件名称 Parts name	材料 Materials
泵壳 Pump shell	尼龙66(30%玻纤增强) Nylon 66 (30% fiberglass enhancement)
活塞 Piston	尼龙66(30%玻纤增强) Nylon 66 (30% fiberglass enhancement)
集流板 Collector board	尼龙66(30%玻纤增强) Nylon 66 (30% fiberglass enhancement)
连接弯管 Bend pipe connection	尼龙66(30%玻纤增强) Nylon 66 (30% fiberglass enhancement)
隔膜片 Diaphragm	三元乙丙塑胶(美国产) Epdm plastic (American made)
膜片 Diaphragm	三元乙丙橡胶 Epdm



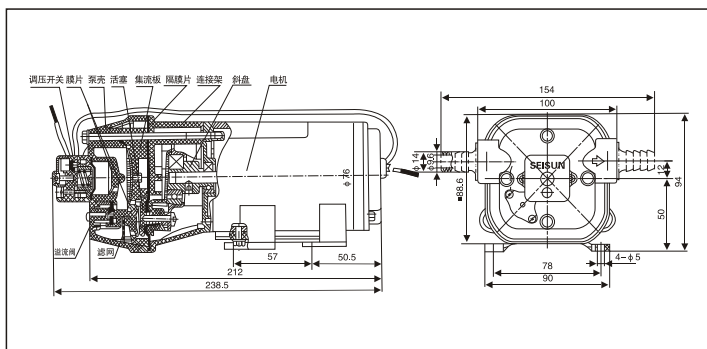
DP微型隔膜泵 DP miniature diaphragm pump



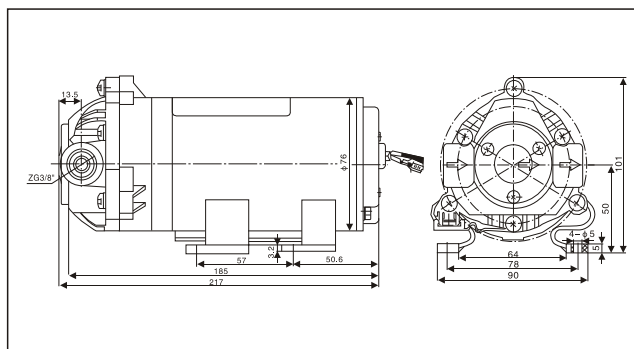
DP-125(铁底座、橡胶脚柱)



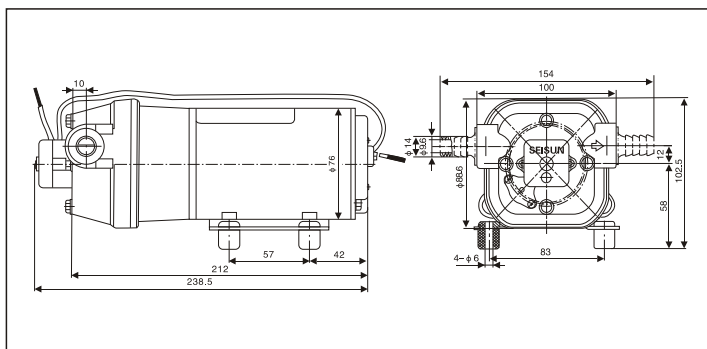
DP-100、DP-60型(铁底座、橡胶脚柱)



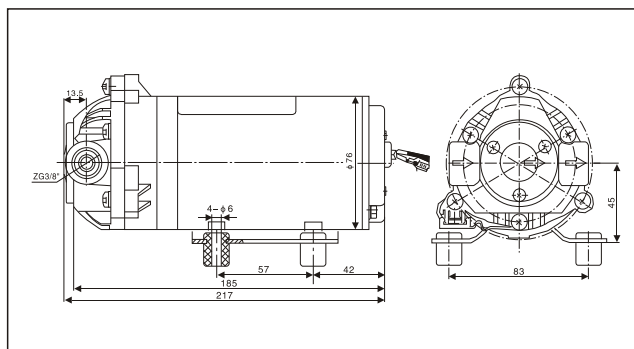
DP-35(尼龙底座)



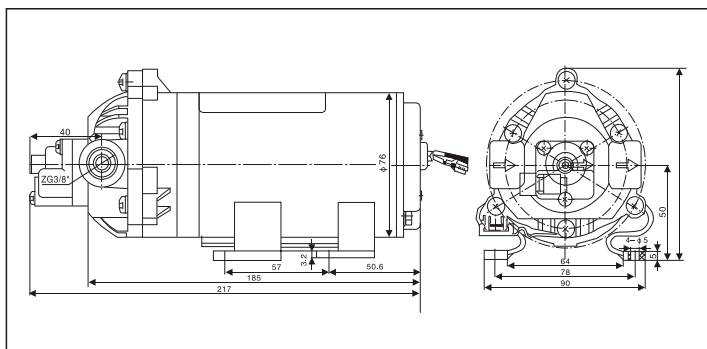
DP-100A、DP-60A(尼龙底座)



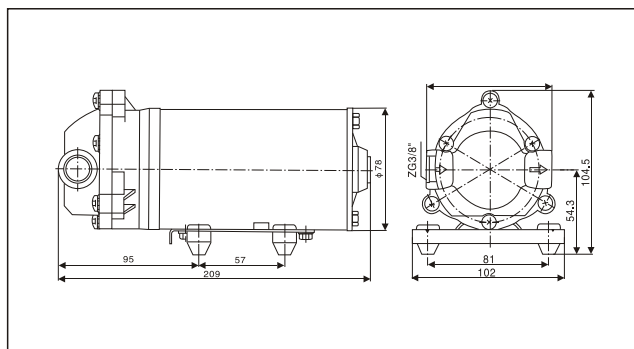
DP-35(铁底座、橡胶脚柱)



DP-100A、DP-60A型(铁底座、橡胶脚柱)



DP-100、DP-60(尼龙底座)



DP-130型(铁底座、橡胶脚柱)

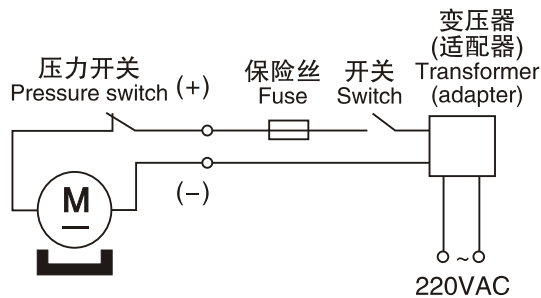
◆ 安装指南 Installation guide

- 1、安装时，需拔出隔膜泵进出口的封盖。
- 2、装有随泵附带的进出口接头，DP130、DP-125、DP-100、DP-60型隔膜泵进出口采用ZG3/8"外牙G29/64"弯管接头；DP-35泵进出口采用3/8"外牙软管接头。
- 3、泵应按水平安装；如垂直安装时，泵头应朝下。
- 4、在泵的进口管道中安装一个过滤器，这是泵有效使用的保证。(DP-35型泵头内已装有过滤网，无需安装过滤器)。
- 5、泵的底座分尼龙底座，铁底座橡胶脚柱，用户可参考安装图选用。

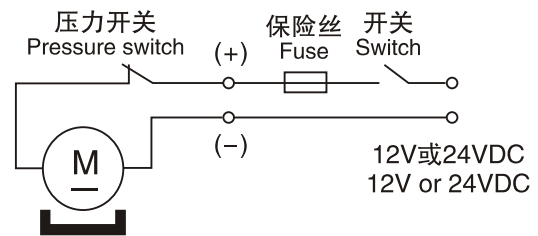
1. Installation, need to pull out the diaphragm pump the import and export of block.
2. With the pump with incidental, DP130, import and export joint DP-125, 100, and the DP-DP-60 type diaphragm pump the import and export ZG3/8 "teeth G29/64" the bend pipe joint; DP-35 pump use 3/8 "import and export the hose coupling teeth.
3. Pump should press level installation; Such as vertical installation, pump head should be down.
4. In the import of pipeline pump installation of a strainer, this is the effective use of assurance. Pump (DP-35 type pump in the head with screen pack, is no installation has filters).
5. Pump base points nylon base, the iron base rubber feet column, the user can reference the installation drawing to choose.

◆ 接线图 Wiring diagram

接交流电源接线图
Meet the ac power the wiring diagram



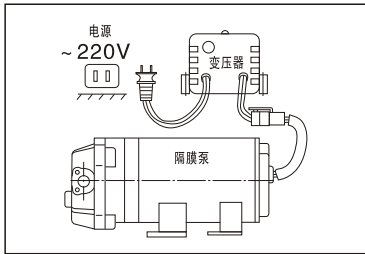
接直流电源接线图
By dc power the wiring diagram



型号 Type	保险丝和开关额定电流 The fuse and switch rated current (A)
DP-130	2
DP-125	2
DP-100	2
DP-60	10
DP-35	10

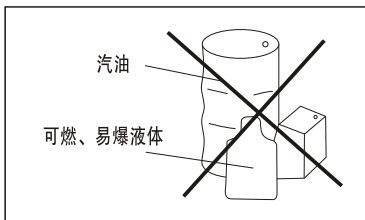
DP微型隔膜泵 DP miniature diaphragm pump

使用注意事项 cautions



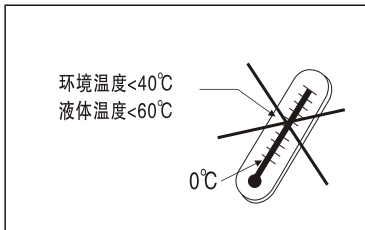
1、DP系列隔膜泵采用12V或24V的永磁直流电动机，用户千万不要直接使用220V电源，若直接插入220V的电源，电机即刻烧坏。本公司备有各类型的变压器，若用户无系统变压设备，可增购适用变压器，以使隔膜泵正常运转。

1. DP series diaphragm pump adopts the 12 V or 24 V of the permanent magnet dc motor, the user 10 million don't directly use the 220 V power source, if direct insert 220 V power supply, motor burn out immediately. Our company have various types of transformer, if the user does not have the system pressure equipment, can change adds apply, in order to make the diaphragm pump transformer normal operation.



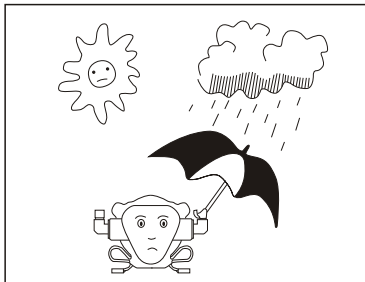
2、泵可输送水、弱酸、碱、盐类等液体，不可输送带颗粒的液体、汽油及其它可燃液体。

2. The pump is conveying water, weak acid, alkali, salt and liquid containing particles, not the liquid, gasoline and other flammable liquid.



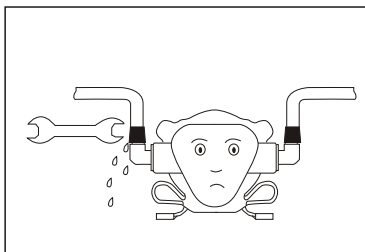
3、泵使用条件：环境温度0℃~40℃，介质温度<60℃。

3. Pump use conditions: 0 °C ~ 40 environmental temperature °C, the temperature of the medium < 60 °C.



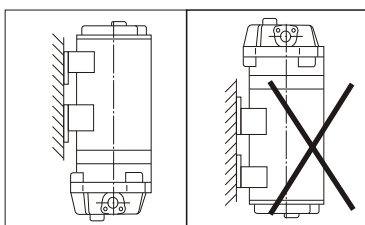
4、泵若放置在露天使用时，应加盖保护，以免水溅入电机，造成断电、漏电或者电机损坏。

4. If placed in the open air, pump use, should the protection, in order to avoid water from entering the motor, causes power, leakage or motor damage.



5、若发现泵或管道有漏水，请及时修理，以免损坏电机，引发其它事故。

5. If discover the pump or pipe leakage, hope to be fixed, lest damage motor, cause other accidents.



6、垂直安装时，泵头应朝下。

6. Vertical installation, pump head should be down.

◆ 故障及排除方法 Fault and elimination method

故障 Fault	原因 Reason	排除方法 Elimination method
电动机运转正常， 但出口无水流出 Motor is normal, but the export without the water out	进口或出口管道有堵塞 Import or export pipeline have blocked	拆下进出口管道，排除管内堵塞物 Dismantling the import and export pipeline, eliminate tube forming
	进口管道内有空气 There were air inlet piping	拧紧进口接头，使密封完好 Tight joints, make good seal imports
	泵内有杂物阻塞 There were sundry jams. Pump	拆开泵头，清除杂物 Open pump head, remove debris
	隔膜片破裂 Diaphragm rupture of	更换隔膜片 Replace diaphragm of
接通电源，电动机不运转 Switch on the power, motor doesn't work	接线脱接或虚接 Pick or a virtual take off wiring	将引线重新固定连接 Will lead to fixed connection
	泵未接通电源 Pump did not turn on the power	使泵接通电源 Supply power to pump
	电动机故障 Motor fault	修理或更换电机 Repair or replace the motor
	变压器故障 Transformer faults	修理或更换变压器 Repair or replace transformer
流量和扬程均偏小 Flow and head are smaller	泵进口处积有空气 Pump inlet product with air	拧紧进口接头，使密封完好 Tight joints, make good seal imports
	有杂物堵在泵内或管道里 Plugging in materials or inside the pipe pump	排除泵内或管道杂物 Out in the pump or pipe fragments
	隔膜片破裂 Diaphragm rupture of	更换隔膜片 Replace diaphragm of
	电动机故障 Motor fault	修理或更换电机 Repair or replace the motor
	过滤网堵塞 Screen pack jams	清除过滤网内杂物 Remove meat sundry filter



警告：在修理泵之前，须关闭电源。

Warning: in the repair of pump, shall, before it shut off the power.