



Application

- Wastewater drainage in factories, construction sites and commercial facilities
- Drainage system in municipal sewage treatment plants
- Drainage station in residential quarters
- Municipal projects
- Methane pools and field irrigation in countryside

Pump

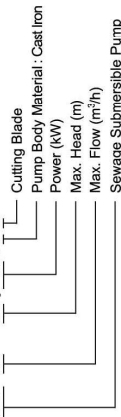
- Max. immersion depth: 5 m
- Max. liquid temperature: +40°C
- Liquid pH value: 4 – 10
- Liquid kinematic viscosity: $7 \times 10^{-2} \sim 23 \times 10^{-6} \text{ m}^2/\text{s}$
- Max. liquid density: $1.2 \times 10^3 \text{ kg/m}^3$

Motor

- Copper winding
- Built-in thermal protector
- Stainless steel welded shaft
- Insulation class: B
- Protection class: IP68

Identificati

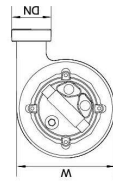
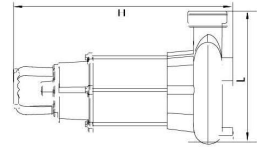
XSP 18 - 12 / 1.31D



Sewage Submersible Pump

Technical Data

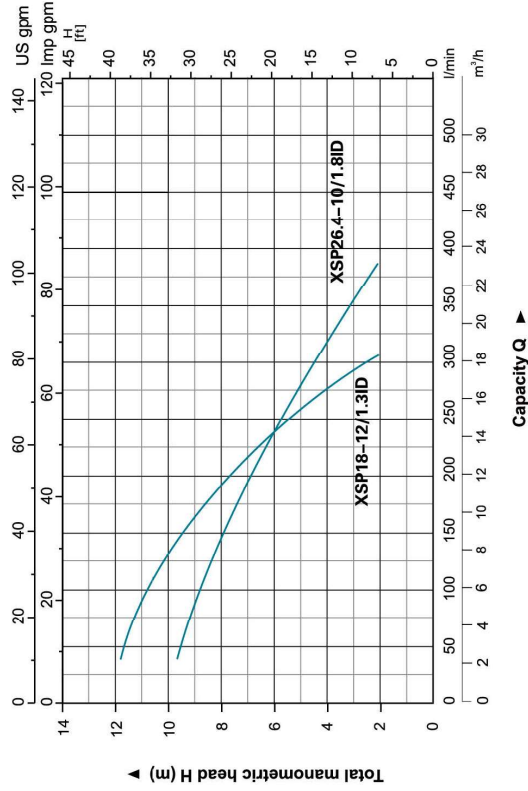
Model	Power		Voltage (V/Hz)	Outlet diameter (mm)	Max. flow (l/min)	Max. head (m)	GW (kgs)	Packing size (mm)	Quantity (PCS/20 TEU)
	(kW)	HP							
XSP18-12/1.31D	1.3	1.75	220/50	50	300	12	22.8	570x310x245	675
XSP26.4-10/1.81D	1.8	2.4	220/50	75	440	10	30	585x350x245	540



Dimension

Model	DN (mm)	L (mm)	W (mm)	H (mm)
XSP18-12/1.31D	2"	262	191	510
XSP26.4-10/1.81D	2 1/2"	290	196	520

Hydraulic Performance Curves



Materials Table

No.	Part	Material	No.	Part	Material
1	Bolt	Stainless steel	30	Unclamped washer	65Mn
2	Stretching washer	Stainless steel	31	Ball bearing	
3	Washer	Stainless steel	32	Rotor	
4	Bolt	Stainless steel	33	Ball bearing	
5	Washer	Stainless steel	34	Screw	Stainless steel
6	Handle	Stainless steel	35	Washer	Stainless steel
7	Nut	Stainless steel	36	Connection part	HT200
8	Protector	NR	37	Mechanical seal	Ceramic/Carbon
9	Cable presser	Stainless steel	38	O-ring	NBR
10	Washer	Stainless steel	39	Oil chamber cover	HT200
11	Screw	Stainless steel	40	Screw	Stainless steel
12	Bolt	Stainless steel	41	Washer	Stainless steel
13	O-ring	NBR	42	O-ring	NBR
14	Screw	Stainless steel	43	Screw	Stainless steel
15	Flange	Stainless steel	44	Oil seal	
16	Cable	CR	45	Pump body	HT200
17	Cable Protector	HT200	46	Impeller	HT200
18	Capacitor cover	HT200	47	Shrink ring	Stainless steel
19	Motor stator	Stainless steel	48	Washer	Stainless steel
20	O-ring	NBR	49	Bolt	Stainless steel
21	Rubber washer	NR	50	Radial cutter	40Cr
22	Screw	CrZn40	51	Washer	40Cr
23	Stretching washer	65Mn	52	Screw	Stainless steel
24	Washer	CrZn40	53	Key	Steel
25	Line protector	NBR	54	Float switch	
26	Motor cover	HT200	55	O-ring	NBR
27	Thermal protector	NR	56	Connection nut	ABS
28	O-ring	NBR	57	Outlet connector	ABS
29	Motor stator	Stainless steel			

