

Application

- Wastewater drainage in factories, construction sites and commercial facilities
- Drainage system in municipal sewage treatment plants
- Drainage station in residential quarters
- Municipal projects
- Methane pools and field irrigation in countryside

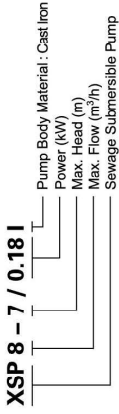
Pump

- Max. immersion depth: 5 m
- Max. liquid temperature: +40°C
- Liquid pH value: 4 – 10
- Liquid kinematic viscosity: $7 \times 10^{-7} - 23 \times 10^{-6} \text{ m}^2/\text{s}$
- Max. liquid density: $1.2 \times 10^3 \text{ kg/m}^3$

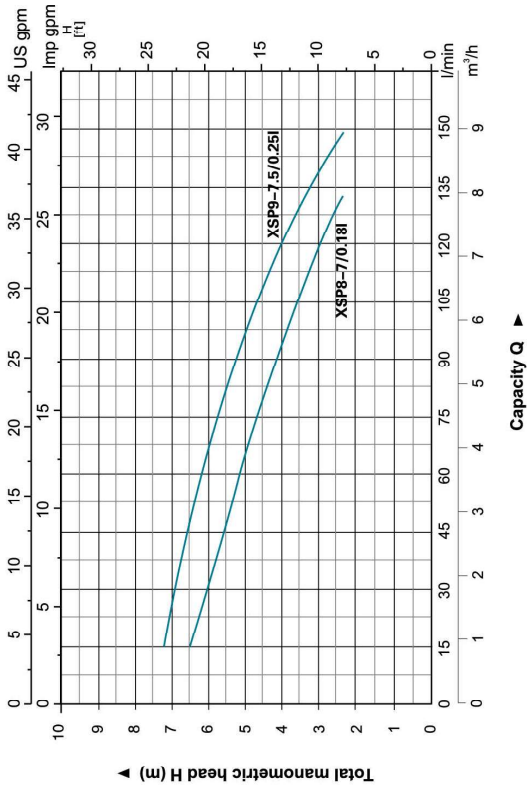
Motor

- Copper winding
- Built-in thermal protector
- Stainless steel welded shaft
- Insulation class: B
- Protection class: IP68

Identification Codes

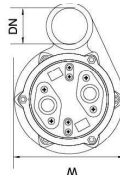
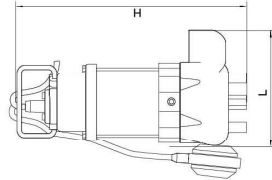


Hydraulic Performance Curves



Technical Data

Model	Power		Outlet diameter (mm)	Max. flow (l/min)	Max. head (m)	Max. dia. of particle (mm)	GW (kgs)	Packing size (mm)	Quantity (PCS/20 TEU)
	(kW)	HP							
XSP8-7/0.18I	0.18	0.25	40.32.25	133	7	15	9	185x180x360	2322
XSP9-7.5/0.25I	0.25	0.33	40.32.25	150	7.5	15	10	185x180x380	2174



Dimension

Model	DN (mm)	L (mm)	W (mm)	H (mm)
XSP8-7/0.18I	1 1/4"	166	121	335
XSP9-7.5/0.25I		166	121	355

Materials Table

No.	Part	Material	No.	Part	Material
1	Bolt	Stainless steel	25	Stator	Stainless steel
2	Stretching washer	Stainless steel	26	Screw	Stainless steel
3	Washer	Stainless steel	27	Stretching washer	Stainless steel
4	Handle	Stainless steel	28	Thermal protector	Stainless steel
5	Screw	Stainless steel	29	Wave washer	65Mn
6	Cable protector	Stainless steel	30	Ball bearing	65Mn
7	Capacitor	CH	31	Ball bearing	65Mn
8	Cable protector	HT200	32	Ball bearing	65Mn
9	Capacitor cover	HT200	33	Rubber washer	65Mn
10	Screw	Stainless steel	34	Screw	Stainless steel
11	Cable presser	Stainless steel	35	O-ring	65Mn
12	Protector	NR	36	Connection part	HT200
13	O-ring	NR	37	Mechanical seal	Ceramic/Carbon
14	Capacitor	NR	38	O-ring	65Mn
15	Rubber washer	NR	39	Oil chamber cover	HT200
16	Screw	Steel	40	Washer	Stainless steel
17	Stretching washer	65Mn	41	Screw	Stainless steel
18	Washer	Steel	42	Oil seal	65Mn
19	Press plate	Steel	43	Impeller	PA66
20	Cable holder	NR	44	Nut	Stainless steel
21	Screw	CuZn40	45	Connector	ABS
22	Stretching washer	65Mn	46	Impeller	NR
23	Washer	CuZn40	47	Impeller	HT200
24	Nut	Stainless steel	48	Foot switch	65Mn

