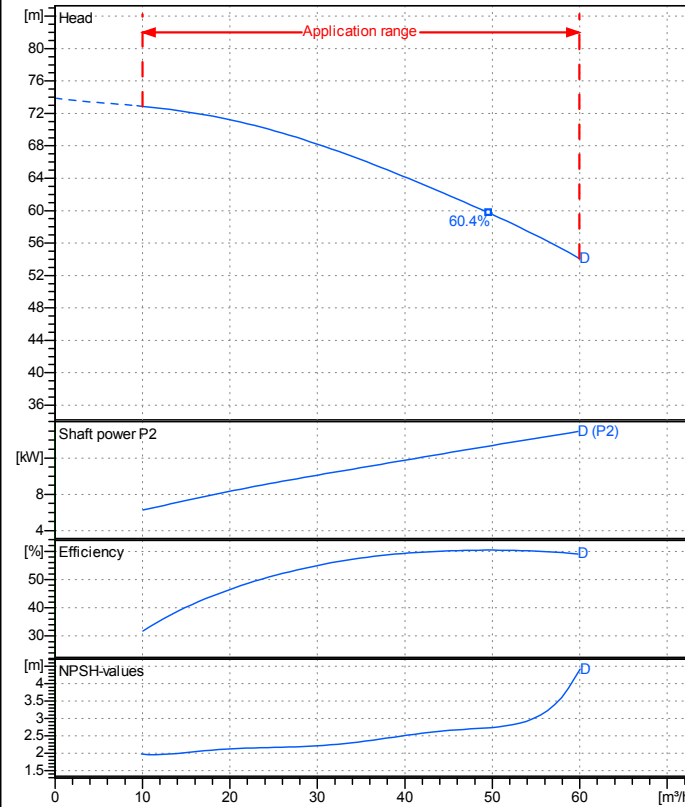


Receiver

From

 Company name
 Respons. Department
 Person in charge
 Phone number
 Fax no
 E-mail address


Operating data specification

Nominal flow	m ³ /h 0
Nominal head	m 0
Static head	m 0
NPSH - v alue of plant	m 0
Inlet pressure	kPa 9.793
Fluid	Water, pure
Operating temperature t A	°C 20
Density at t A	kg/m ³ 998.3
Kin. viscosity at t A	mm ² /s 1.005

Pump

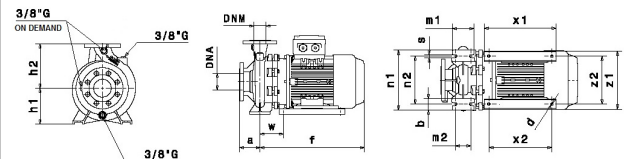
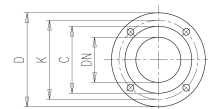
Pump name	IR40-250ND		
Size	65/40/250		
MEI (Reg. 547/2002 EU) >	0,7		
Speed rpm	2900	No of stages	1
Impeller type			
Flow	Nominal	m ³ /h	
	Max-	m ³ /h 60	
	Min-	m ³ /h 10	
Head	Nominal	m	
	Max-	m 72.9	
	Min-	m 54.1	
Head H(Q=0)	m 73.9		
NPSH 3%	m		
Max. working pressure	kPa 724		
Shaft power	kW		
Efficiency	%		
Max absorbed power	kW 14.938		

Materials Pump

Shaft	Stainless steel AISI 431 (1.4057)
Impeller	Cast iron EN-GJL-250
Pump body	Cast iron EN-GJL-250
Seal disc	Cast iron EN-GJL-250
Gasket	Natural fiber
Mechanical seal	BVEG (Grafito/Ossido Allumina/EPDM)

Dimensions in mm

a	100	z1	261	DNM	DNA		
b	65	z2	216	C	88	C	122
d	12			D	150	D	185
f	564			DN	40	DN	65
h1	180			K	110	K	145
h2	225			n°	4 x 19 mm		4 x 19 mm
m1	125						
m2	95						
n1	320						
n2	250						
s	14						
w	113						
x1	320						
x2	280						



Motor	Manufacturer / Type	SAER	132-2P-20	
Efficiency	IEC 60034-30	IE2		
Rated power	kW 15	Efficiency 4/4	90.3 %	
Number of poles	2	Frame size	132	
Electric current	A 28.4 A	Speed	rpm	2930
Electric voltage	V 400 V	3~	Hz	50
Starting mode	Star-delta			
Degree of protection	IP 55	Insulation class	F	

Remarks:

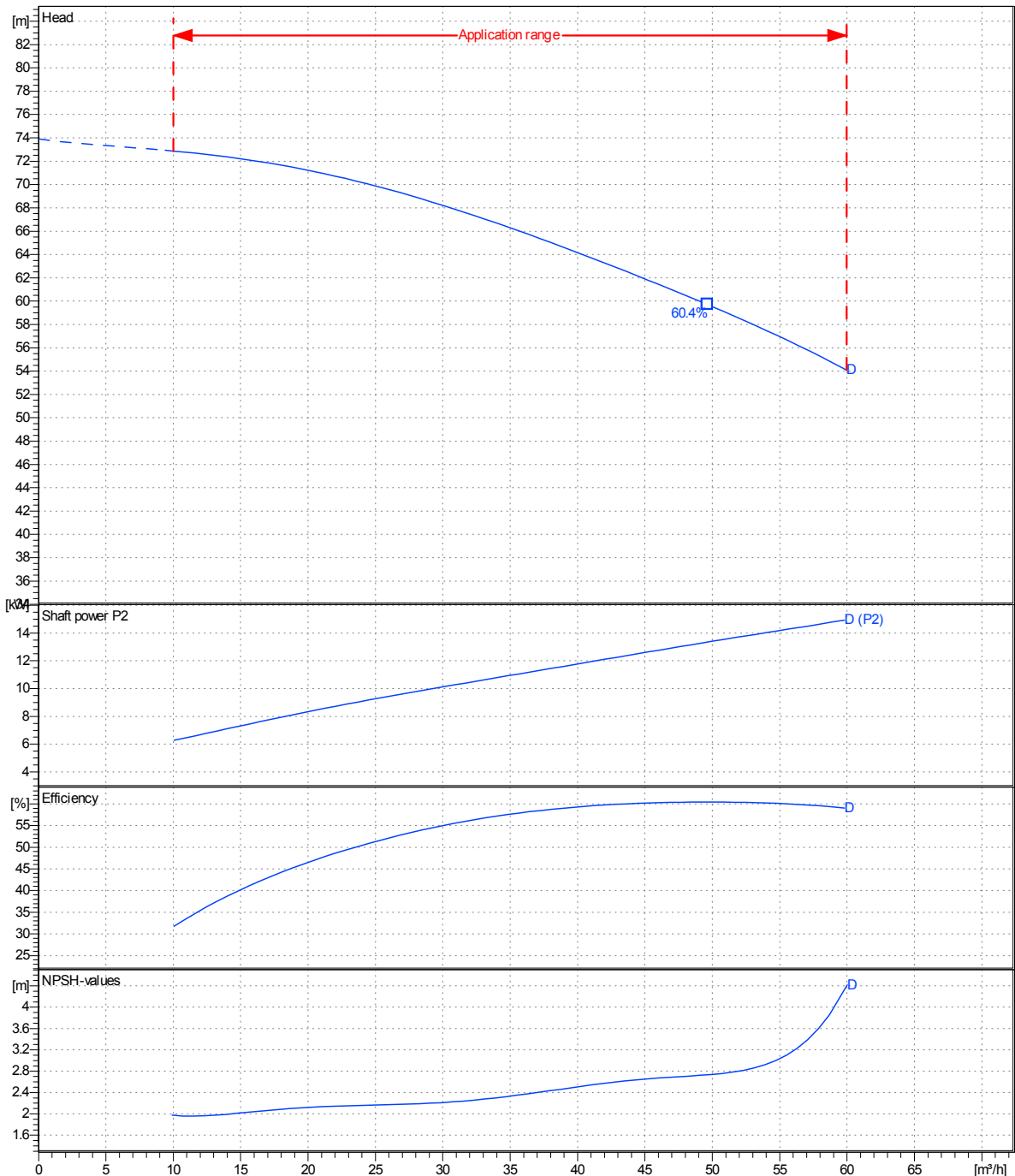
Project	Project ID	Created by	Created on	Last update
			8/6/2019	

Receiver	From
Company name	
Respons. Department	
Person in charge	
Phone number	
Fax no	
E-mail address	

Operating area	Flow	Head	Impeller type
Operating data specification	0 m ³ /h	0 m	Impeller construction: Closed
Pump data	m ³ /h	m	Sense of rotation: Clockwise from the drive end
			Outlet width: DN40
	Flow	Head	Shaft power P2
	Min. Max. η Max.	H(Q=0) η Max.	P2(Q=0) Max. η Max.
	m ³ /h m ³ /h m ³ /h	m m	kW kW kW
	10 60 49.6	73.9 59.7	14.9 13.3
			Speed rpm: 2900
			Frequency Hz: 50 Hz

 Performance data based to: Water, pure [100%]; 20°C; 998kg/m³; 1mm²/s

UNI EN ISO 9906:2012 - Grade 3B



Project	Project ID	Created by	Created on 8/6/2019	Last update
---------	------------	------------	-------------------------------	-------------

Revision no

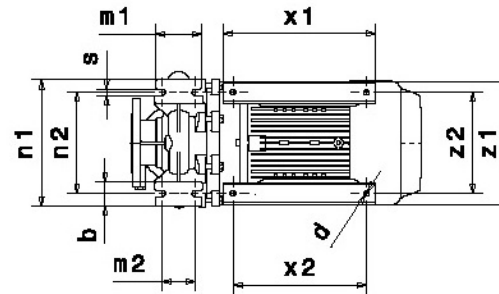
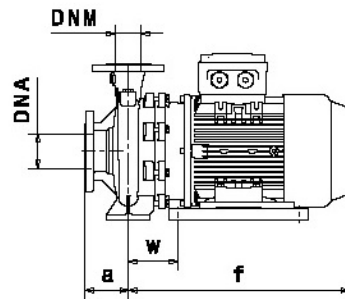
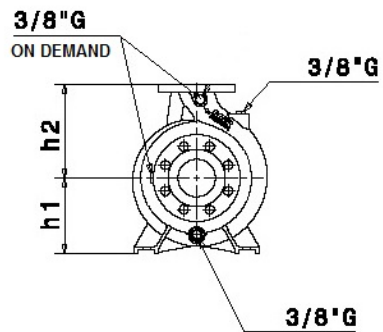
Pump dimensions

Connections

Suction side	Discharge port
DN65	DN40
PN10 /	PN10 /

Dimensions in mm

a	100
b	65
d	12
f	564
h1	180
h2	225
m1	125
m2	95
n1	320
n2	250
s	14
w	113
x1	320
x2	280
z1	261
z2	216



Disegni dimensionali e immagini non vincolanti. Saer si riserva il diritto di effettuare cambiamenti senza alcun preavviso.
Dimensional drawing and picture are not binding. Saer reserves the right to make changes without prior notice.

Project

Project ID

Created by

Created on
8/6/2019

Last update