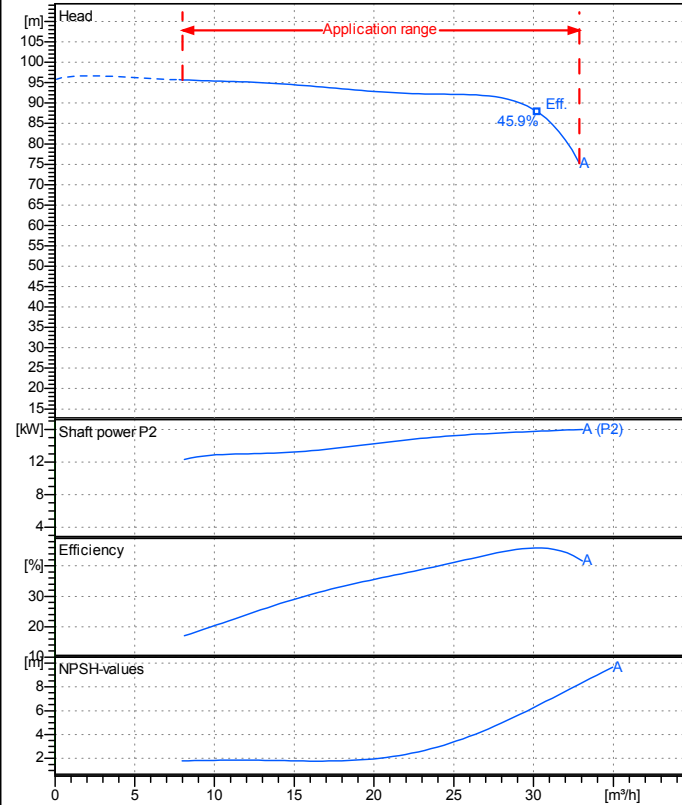


Receiver

From

 Company name
 Respons. Department
 Person in charge
 Phone number
 Fax no
 E-mail address

Operating data specification

| | |
|---------------------------|--------------------------|
| Nominal flow | m ³ /h 0 |
| Nominal head | m 0 |
| Static head | m 0 |
| NPSH - v value of plant | m 0 |
| Inlet pressure | kPa 9.793 |
| Fluid | Water, pure |
| Operating temperature t A | °C 20 |
| Density at t A | kg/m ³ 998.3 |
| Kin. viscosity at t A | mm ² /s 1.005 |

Pump

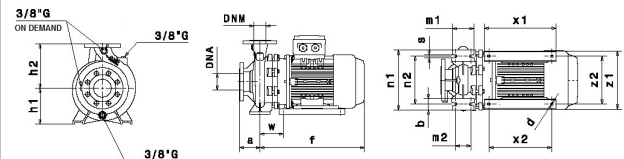
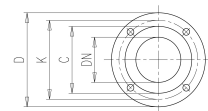
| | | | |
|--------------------------|-----------|-------------------|-----------|
| Pump name | IR32-250A | | |
| Size | 50/32/250 | | |
| MEI (Reg. 547/2002 EU) > | 0,4 | | |
| Speed rpm | 2900 | No of stages | 1 |
| Impeller type | | | |
| Flow | Nominal | m ³ /h | |
| | Max- | m ³ /h | 32.9 |
| | Min- | m ³ /h | 8 |
| Head | Nominal | m | |
| | Max- | m | 95.7 |
| | Min- | m | 75.3 |
| Head H(Q=0) | | | m 95.9 |
| NPSH 3% | | | m |
| Max. working pressure | | | kPa 939 |
| Shaft power | | | kW |
| Efficiency | | | % |
| Max absorbed power | | | kW 15.968 |

Materials Pump

| | | | |
|-----------------|-------------------------------------|--|--|
| Shaft | Stainless steel AISI 431 (1.4057) | | |
| Impeller | Cast iron EN-GJL-250 | | |
| Pump body | Cast iron EN-GJL-250 | | |
| Seal disc | Cast iron EN-GJL-250 | | |
| Gasket | Natural fiber | | |
| Mechanical seal | BVEG (Grafito/Ossido Allumina/EPDM) | | |
| | | | |
| | | | |
| | | | |
| | | | |
| | | | |

Dimensions in mm

| | | | | | | | |
|----|-----|----|-----|-----|------------------------|----|-----------|
| a | 100 | z1 | 261 | DNM | DNA | | |
| b | 65 | z2 | 216 | C | 78 | C | 102 |
| d | 12 | | | D | 140 | D | 165 |
| f | 565 | | | DN | 32 | DN | 50 |
| h1 | 180 | | | K | 100 | K | 125 |
| h2 | 225 | | | n° | 4 x 19 mm ² | | 4 x 19 mm |
| m1 | 125 | | | | | | |
| m2 | 95 | | | | | | |
| n1 | 320 | | | | | | |
| n2 | 250 | | | | | | |
| s | 14 | | | | | | |
| w | 114 | | | | | | |
| x1 | 320 | | | | | | |
| x2 | 280 | | | | | | |



| | | | | |
|----------------------|---------------------|------------------|-----------|------|
| Motor | Manufacturer / Type | SAER | 132-2P-23 | |
| Efficiency | IEC 60034-30 | IE2 | | |
| Rated power | kW 17 | Efficiency 4/4 | 90.4 % | |
| Number of poles | 2 | Frame size | 132 | |
| Electric current | A 31.3 A | Speed | rpm | 2920 |
| Electric voltage | V 400 V | 3~ | Hz | 50 |
| Starting mode | Star-delta | | | |
| Degree of protection | IP 55 | Insulation class | F | |

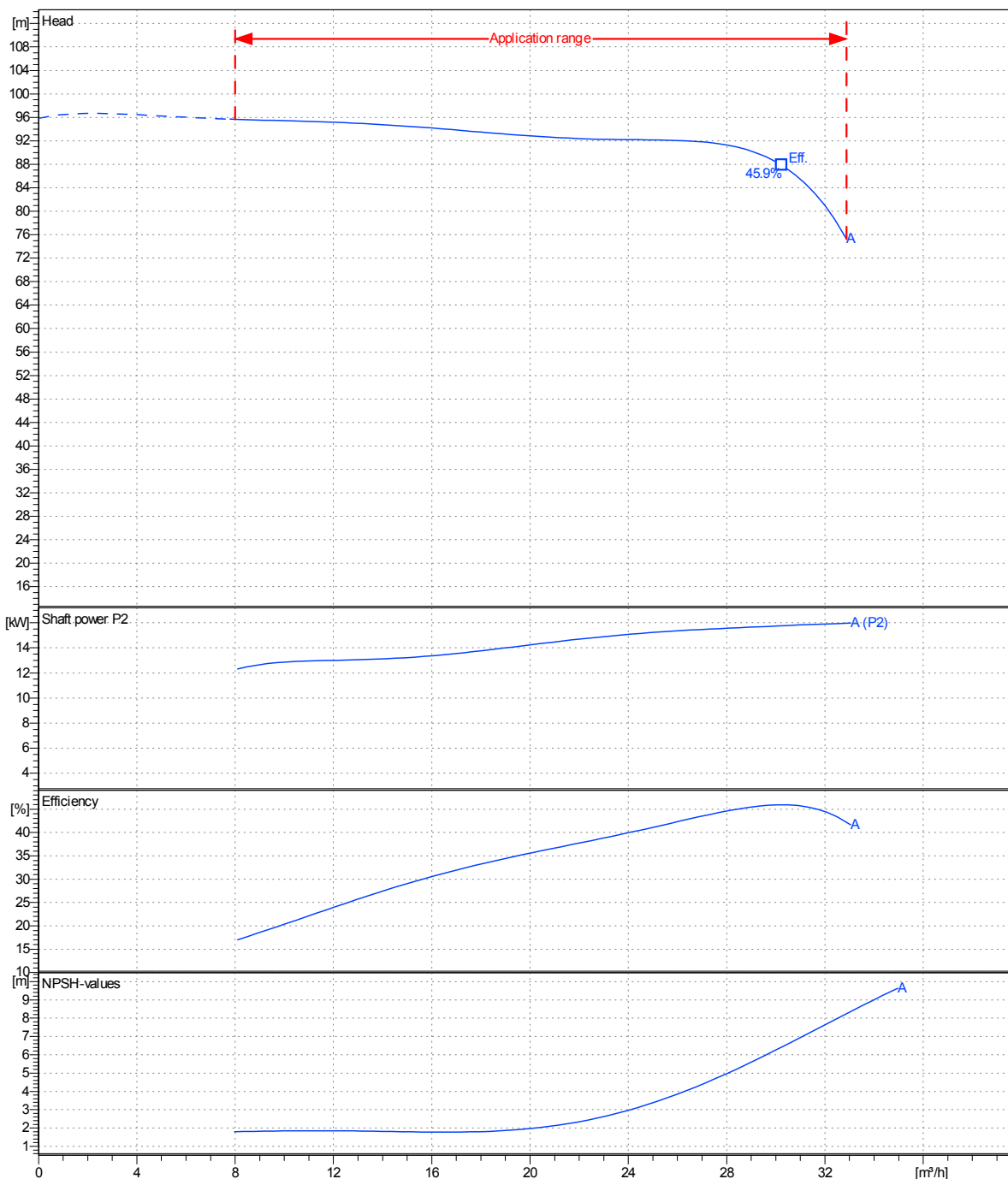
Remarks:

| | | | | |
|---------|------------|------------|------------|-------------|
| Project | Project ID | Created by | Created on | Last update |
| | | | 8/6/2019 | |

| | |
|---------------------|-------------|
| Receiver | From |
| Company name | |
| Respons. Department | |
| Person in charge | |
| Phone number | |
| Fax no | |
| E-mail address | |

| | | | |
|------------------------------|---|--------------------|---|
| Operating area | Flow | Head | Impeller type |
| Operating data specification | 0 m ³ /h | 0 m | Impeller construction: Closed |
| Pump data | m ³ /h | m | Sense of rotation: Clockwise from the drive end |
| | | | Outlet width: DN32 |
| | Flow | Head | Shaft power P2 |
| | Min. Max. η Max. | H(Q=0) η Max. | P2(Q=0) Max. η Max. |
| | m ³ /h m ³ /h m ³ /h | m m | kW kW kW |
| | 8 32.9 30.3 | 95.9 87.8 | 16 15.8 |
| | | | Speed rpm: 2900 |
| | | | Frequency Hz: 50 Hz |

Performance data based to: Water, pure [100%]; 20°C; 998kg/m³; 1mm²/s UNI EN ISO 9906:2012 - Grade 3B



| | | | | |
|---------|------------|------------|-----------------|-------------|
| Project | Project ID | Created by | Created on | Last update |
| | | | 8/6/2019 | |

Revision no

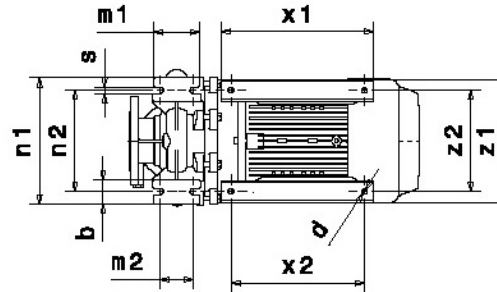
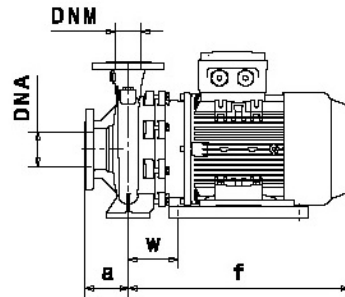
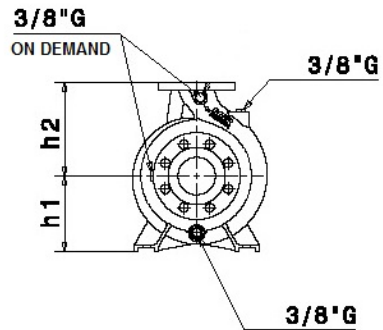
Pump dimensions

Connections

| | |
|--------------|----------------|
| Suction side | Discharge port |
| DN50 | DN32 |
| PN10 / | PN10 / |

Dimensions in mm

| | |
|----|-----|
| a | 100 |
| b | 65 |
| d | 12 |
| f | 565 |
| h1 | 180 |
| h2 | 225 |
| m1 | 125 |
| m2 | 95 |
| n1 | 320 |
| n2 | 250 |
| s | 14 |
| w | 114 |
| x1 | 320 |
| x2 | 280 |
| z1 | 261 |
| z2 | 216 |



Disegni dimensionali e immagini non vincolanti. Saer si riserva il diritto di effettuare cambiamenti senza alcun preavviso.
Dimensional drawing and picture are not binding. Saer reserves the right to make changes without prior notice.

Project

Project ID

Created by

Created on
8/6/2019

Last update