



Technical data

| | |
|-----------|-----------|
| Date | 2/18/2025 |
| Offer N. | --- |
| Pump Type | CM50-160B |
| | |

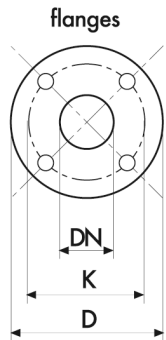
| | | | |
|--------|-----------------------|-----------|-----|
| Client | UAB Vandens siurbliai | Reference | --- |
|--------|-----------------------|-----------|-----|

Pump data

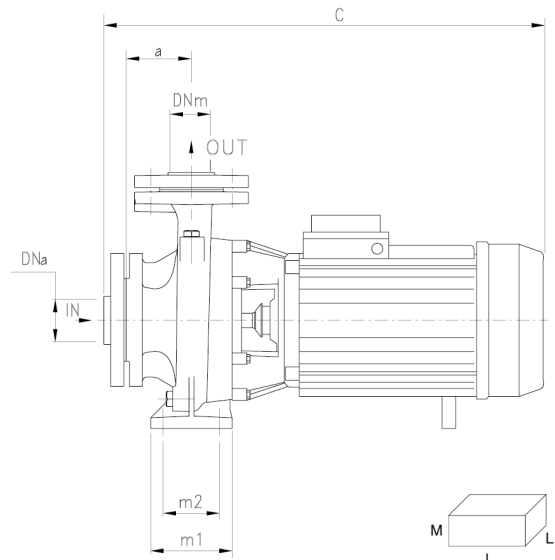
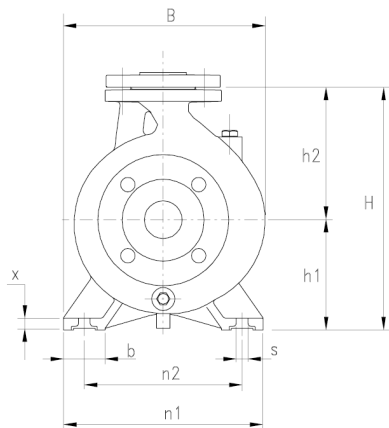
| | | |
|--------------------|--|---|
| Pump body | Cast iron GJL-250 | Monobloc horizontal centrifugal pumps, constructed to EN 733 standards; widely used in water supplies, pressurisation and fire-fighting systems, cooling, heating, irrigation, industrial and agricultural applications. The pumps are equipped with cast iron impeller in standard configuration; on request, they are available with bronze or AISI 316 stainless steel impeller. Pumps are supplied with counter-flange. |
| Motor bracket | Cast iron GJL-250 | |
| Impeller | Cast iron GJL-250 On request bronze or stainless steel AISI 316 | |
| Mechanical seal | Ceramic-Graphite | |
| Motor shaft | Stainless steel AISI 304 EN X5CrNi18-10 | |
| Liquid temperature | -10°C +90°C | |
| Operating pressure | Max 10 bar | |
| | | |

| P2 | | P1 (kW) | | A | | Q (m ³ /h - l/min) | | | | | | | | | | | | | | | |
|------|------|---------|-----|--------|--------|-------------------------------|------|------|------|------|------|------|-----|------|------|------|------|------|------|------|--|
| (HP) | (kW) | 1~ | 3~ | 1x230V | 3x400V | 0 | 21 | 24 | 27 | 30 | 33 | 36 | 39 | 42 | 45 | 48 | 54 | 60 | 66 | 72 | |
| | | | | | | 0 | 350 | 400 | 450 | 500 | 550 | 600 | 650 | 700 | 750 | 800 | 900 | 1000 | 1100 | 1200 | |
| | | | | | | H (m) | | | | | | | | | | | | | | | |
| 7,5 | 5,5 | --- | 6,5 | --- | 10,9 | 32.1 | 33.5 | 33.4 | 33.1 | 32.7 | 32.2 | 31.6 | 31 | 30.2 | 29.1 | 28.3 | 26.2 | 23.9 | 21.5 | 18.9 | |

Technical Sheet



| DIMENSIONS (mm) | | | | |
|-----------------|-----|-----|-------|----|
| DN | D | K | holes | |
| | | | n° | Ø |
| 32 | 140 | 100 | 4 | 18 |
| 40 | 150 | 110 | 4 | 18 |
| 50 | 165 | 125 | 4 | 18 |
| 65 | 185 | 145 | 4 | 18 |
| 80 | 200 | 160 | 8 | 18 |
| 100 | 220 | 180 | 8 | 18 |
| 125 | 250 | 210 | 8 | 18 |



| DNA | DNM | DIMENSIONS (mm) | | | | | | | | | | | | | | | | Kg |
|-----|-----|-----------------|-----|-----|-----|----|-----|-----|----|----|----|-----|-----|-----|-----|-----|-----|------|
| | | a | h1 | h2 | m1 | m2 | n1 | n2 | b | x | s | C | B | H | I | L | M | |
| 65 | 50 | 100 | 160 | 180 | 100 | 70 | 265 | 212 | 50 | 12 | 14 | 590 | 270 | 340 | 627 | 287 | 408 | 74,5 |

Notes

The information may be subject to change without notice. It is always advisable to contact our commercial department in order to get further information about the products, their technical specifications and warranty conditions. The Company is expressly relieved of any liability for the purchasing of a product not in line with the customer's needs, if not consulted beforehand for a specific consultancy.

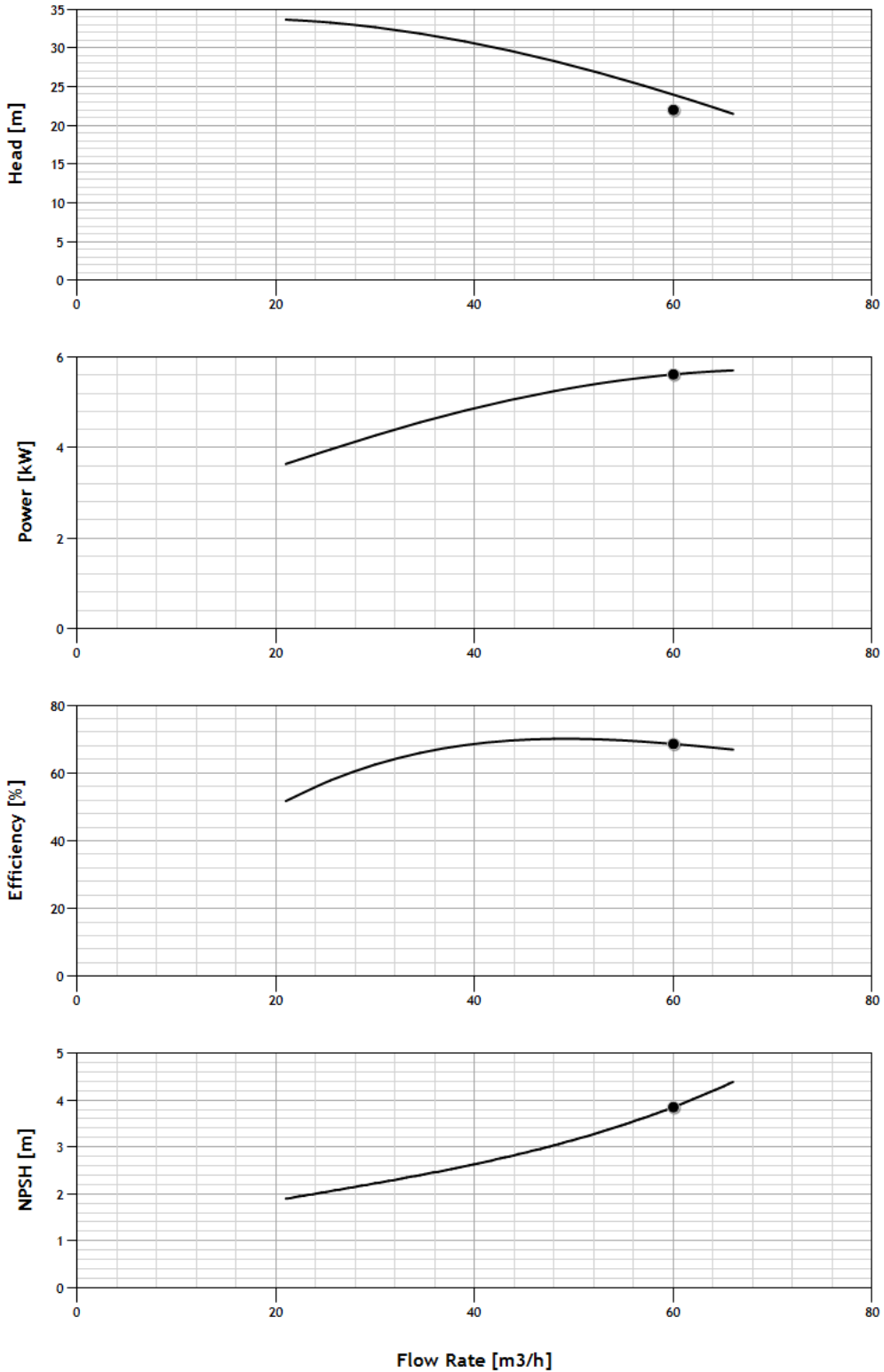


Working Curves

Pump type: CM50-160B

| | |
|----------|-----------|
| Curv n°: | CM50-160B |
| Date: | 2/18/2025 |
| | |

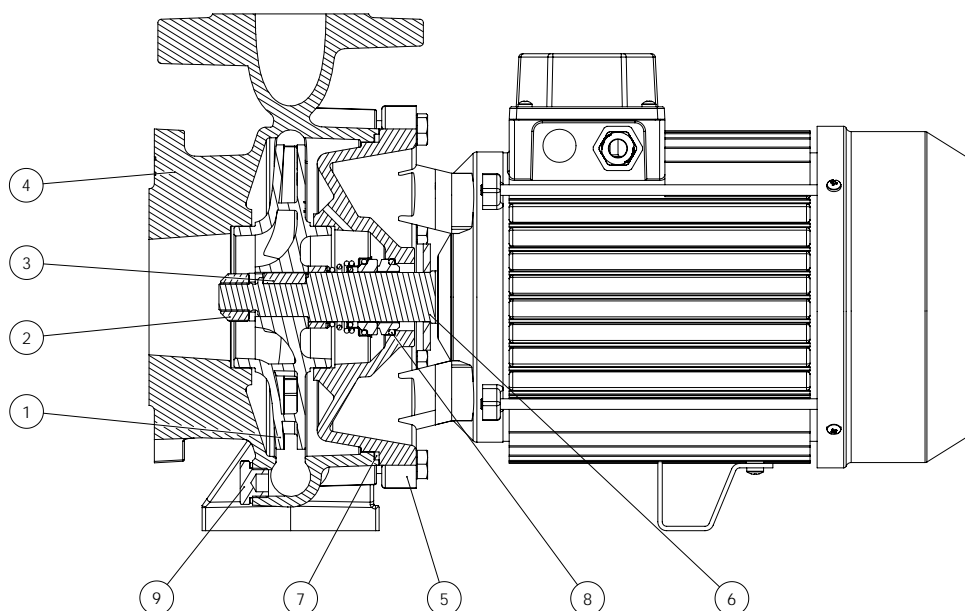
Q (m3/h) 60 | H (m) 22 | Power [kW] 5.62 | Efficiency % 68.6 | NPSH (m) 3.85



MEI ≥ 0,4 (regulation EU N. 547/2012)
Tolerances according to UNI ISO 9906 grade 3B


CM Series


Models list and materials



| POS: N. | DENOMINATION | VERSION | MATERIAL | REFERENCE STANDARDS | |
|------------|-------------------------------------|--|--|--|---|
| | | | | EUROPE | USA |
| 1 | Impeller | Standard B X | Cast iron G20 Bronze Stainless steel | GJL-200 (JL1030) CuSn10-C (CC480K) X5CrNiMo17-12-2/ 1.4401 | ASTM Class 30 UNS C90700 AISI 316 |
| 2 | Impeller lock nut and washer | | Stainless steel | X5CrNiMo17-12-2/ 1.4401 | AISI 316 |
| 3 | Impeller key | | Stainless steel | X5CrNiMo17-12-2/ 1.4401 | AISI 316 |
| 4 | Volute casing | Standard for models up to 80-200 Standard from model 80-250 | Cast iron G20 Cast iron G25 | GJL-200 (JL1030) GJL-250 (JL1040) | ASTM Class 30 ASTM Class 35 |
| 5 | Motor bracket | | Cast iron G20 | GJL-200 (JL1030) | ASTM Class 30 |
| 6 | Shaft extension | | Stainless tsteel | X5CrNi18-10/ 1.4301 | AISI 304 |
| 7 | O-ring | Standard E V | NBR EPDM FKM | | |
| 8 | Mechanical seal | | (Search for the material in the mechanical seal table) | | |
| 9 | Fill and drain plugs | | Brass | CU ZN 40 PB2 UNI 5705/65 | C37700 |

CM Serie-Mechanical seal and bearings

| MECHANICAL SEAL | PUMP MODEL | SHAFT Ø | | STANDARD MATERIAL | OPTIONAL | | | |
|---|--|---------|--|-------------------------------|--------------------------------|-------------------------------|--------------------|-------------------|
| | | | | | E | V | 2E | 2V |
|  | CM32-160C, CM32-160B, CM32-160A, CM40-125C, CM40-125B, CM40-125A | 20mm | Rotating face Stationary face Elastomer | Ceramic Graphite NBR | Ceramic Graphite EPDM | - - - | SiC SiC EPDM | SiC SiC FKM |
| | CM40-250BM, CM40-250AM | 28mm | Rotating face Stationary face Elastomer | Ceramic Graphite EPDM | - - - | - - - | SiC SiC EPDM | SiC SiC FKM |
| | CM32-200C, CM32-200B1, CM32-200B, CM32-200A1, CM32-200A, CM32-250C, CM32-250B, CM32-250A1, CM32-250A, CM40-160B, CM40-160A, CM40-160AP, CM40-200B1, CM40-200B, CM40-200A1, CM40-200A, CM40-200AP, CM40-250C, CM40-250B, CM40-250A1, CM40-250A, CM50-125B, CM50-125A, CM50-160B1, CM50-160B, CM50-160A1, CM50-160A, CM50-200C, CM50-200B, CM50-200A1, CM50-200A, CM50-250C1, CM50-250C, CM50-250B, CM50-250A, CM65-125B1, CM65-125B, CM65-125A1, CM65-125A, CM65-160C, CM65-160B, CM65-160A1, CM65-160A, CM65-200C1, CM65-200C, CM65-200B, CM65-200A, CM80-160E, CM80-160D, CM80-160C, CM80-160B, CM80-160A1, CM80-160A | 28mm | Rotating face Stationary face Elastomer | Ceramic Graphite NBR | Ceramic Graphite EPDM | Ceramic Graphite FKM | SiC SiC EPDM | SiC SiC FKM |
| | CM65-250B, CM65-250A, CM80-200B, CM80-200A, CM100-160B, CM100-160A | 40mm | Rotating face Stationary face Elastomer | CrNi-steel Graphite NBR | CrNi-steel Graphite EPDM | CrNi-steel Graphite FKM | SiC SiC EPDM | SiC SiC FKM |

| BEARINGS | PUMP MODEL | TYPE | |
|---|---|------------|------------|
|  | 3-CM32-200C, CM40-160B, 3-CM40-160A, CM50-125B, 3-CM50-125A | 6204-ZZ | 6206-ZZ C3 |
| | CM32-160C, CM32-160B, CM32-160A, CM40-125C, CM40-125B, CM40-125A | 6205-ZZ C3 | 6203-ZZ |
| | 1-CM32-200C, CM32-200B1, CM32-200B, CM32-200A1, CM32-200A, CM32-250C, CM32-250B, 1-CM40-160A, CM40-160AP, CM40-200B1, CM40-200B, CM40-200A1, CM40-200A, CM40-200AP, CM40-250C, CM40-250B, 1-CM50-125A, CM50-160B1, CM50-160B, CM50-160A1, CM50-160A, CM50-200C, CM50-200B, CM65-125B1, CM65-125B, CM65-125A1, CM65-125A, CM65-160C, CM65-160B, CM80-160E, CM80-160D | 6206-ZZ C3 | 6306-ZZ C3 |
| | CM32-250A1, CM40-250A1, CM50-200A1, CM50-250C1, CM65-160A1, CM65-200C1, CM80-160C1 | 6308-ZZ C3 | 6306-ZZ C3 |
| | CM32-250A, CM40-250A, CM40-250BM, CM40-250AM, CM50-200A, CM50-250C, CM50-250B, CM50-250A, CM65-160A, CM65-200C, CM65-200B, CM65-200A, CM80-160C, CM80-160B, CM80-160A | 6308-ZZ C3 | 6309-ZZ C3 |
| | CM65-250B, CM65-250A, CM80-200B, CM80-200A, CM100-160B, CM100-160A | 6309-ZZ C3 | 6310-ZZ C3 |