

Tideway

PNEUMATIC DIAPHRAGM PUMP

(GMB-15 1/2")



Aluminum

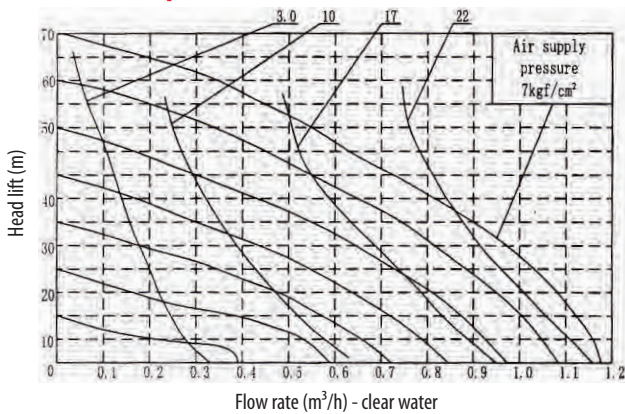


Polypropylene

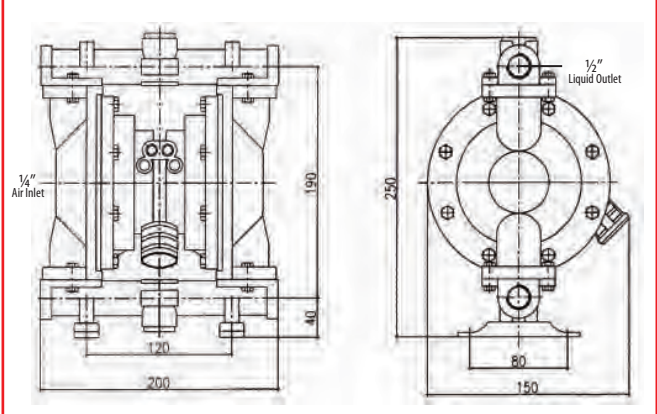


Stainless Steel

Air Consumption (m³/h)



Installation Dimension



Technical Parameters

Max. Flow Rate	0 - 2.4 m ³ /h	
Max. Lift head	0 - 70 m	
Outlet pressure	0 - 6 kgf/cm ²	
Suction lift	0 - 5 m	
Allowable diameter of grains passing	0 - 1 mm	
Air supply pressure	0 - 7 kgf/cm ²	
Air consumption	0 - 300 L/min	
Air Inlet	1/4 inch	
Air Outlet	1/4 inch	
Net weight	Polypropylene - 3 kg	
	Aluminum - 5 kg	
	Stainless Steel - 6.5 kg	
Gross weight	Carton packaging, plus : 1.0 kg	
881218013A - GMB2P-15TFF	881218014A - GMB2A-15TFF	881218015A - GMB2S-15TFF

*** Product's specification subject to change without further notice.
 *** Actual product may slightly differ from pictures shown.

ESM411 - GMB15
 (16/12/19)