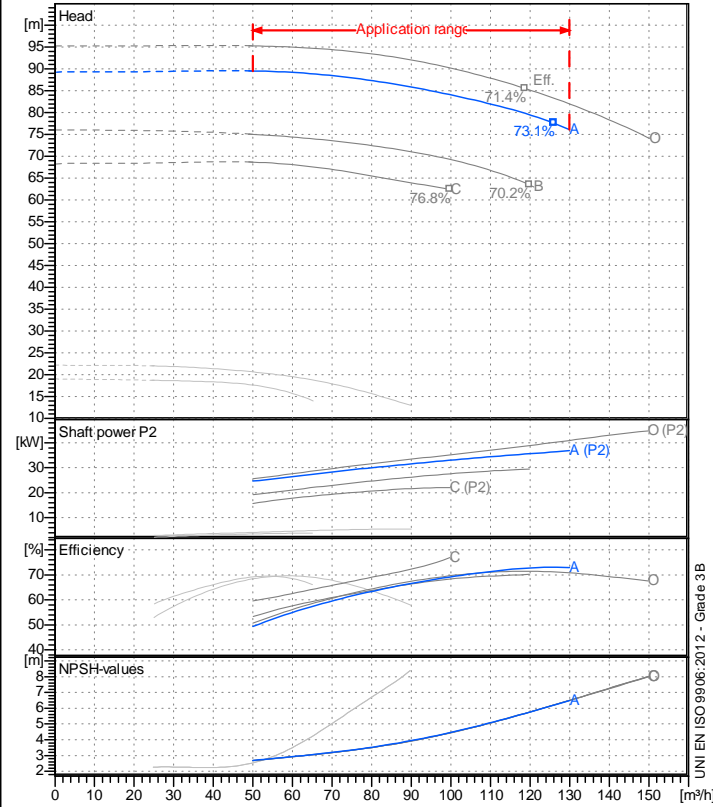


Receiver

From

 Company name
 Respons. Department
 Person in charge
 Phone number
 Fax no
 E-mail address

Operating data specification

| | |
|---------------------------|---------------------------|
| Nominal flow | m ³ /h 0 |
| Nominal head | m 0 |
| Static head | m 0 |
| NPSH - v value of plant | m 0 |
| Inlet pressure | bar 0.09793 |
| Fluid | Water, pure |
| Operating temperature t A | °C 20 |
| Density at t A | kg/dm ³ 0.9983 |
| Kin. viscosity at t A | mm ² /s 1.005 |

Pump

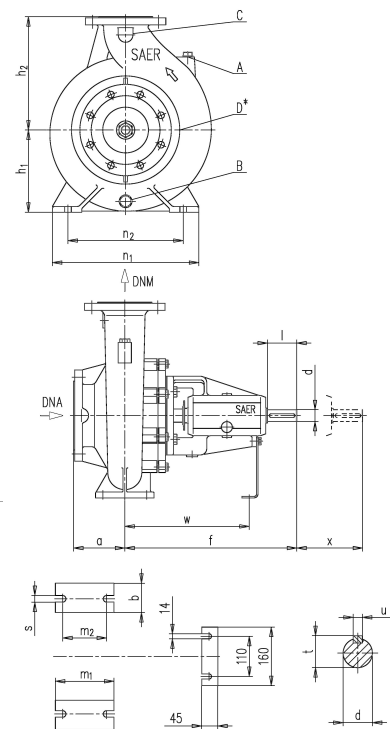
| | | | |
|-----------------------|------------|-----------------------|---|
| Pump name | | NCB 65-250 N A | |
| Size | | 80/65/250 | |
| Design | | No of stages | 1 |
| Speed | 1/min 2900 | | |
| Impeller type | | | |
| Flow | Nominal | m ³ /h | |
| | Max- | m ³ /h 130 | |
| | Min- | m ³ /h 50 | |
| Head | Nominal | m | |
| | Max- | m 89.5 | |
| | Min- | m 76.1 | |
| Head H(Q=0) | | m 89.3 | |
| NPSH 3% | | m | |
| Max. working pressure | | bar 8.75 | |
| Shaft power | | kW | |
| Efficiency | | % | |
| Max absorbed power | | kW 36.909 | |

Materials Pump

| | | | |
|--------------------------|-----------------------------------|------------------|-------|
| Shaft | Stainless steel AISI 431 (1.4057) | | |
| Impeller | Cast iron EN-GJL-250 | | |
| Pump body | Cast iron EN-GJL-250 | | |
| Seal disc | Cast iron EN-GJL-250 | | |
| Gasket | Natural fiber | | |
| | | | |
| Mech. seal EN 12756 | | | |
| Seal face | Carbon graphite resin impreg. | | |
| Seat | Alumina Oxide | | |
| Rubber elements | EPDM Rubber | | |
| Spring and metal bellows | Stainless steel AISI 316 | | |
| Motor | Frame size | | |
| Manufacturer / Type | | | |
| Rated power | kW | Efficiency | 4/4 |
| Electric current | A | Speed | 1/min |
| Electric voltage | V | | Hz |
| Starting mode | | | |
| Degree of protection | | Insulation class | |

Dimensions in mm

| | | | |
|------|-------|----|------|
| a | 100 | n2 | 280 |
| A | 3/8" | s | 18 |
| B | 3/8" | t | 35.3 |
| b | 80 | u | 10 |
| C | 1/4" | w | 340 |
| d k6 | 32 | x | 140 |
| D | 3/8" | | |
| DNA | DN 80 | | |
| DNM | DN 65 | | |
| f | 470 | | |
| h1 | 200 | | |
| h2 | 250 | | |
| l | 80 | | |
| m1 | 160 | | |
| m2 | 120 | | |
| n1 | 460 | | |



| | | | |
|----|-----|----|-----|
| C | 122 | C | 138 |
| D | 185 | D | 200 |
| DN | 65 | DN | 80 |
| K | 145 | K | 160 |
| n° | 4 | n° | 4 |
| on | 19 | on | 19 |

Remarks:

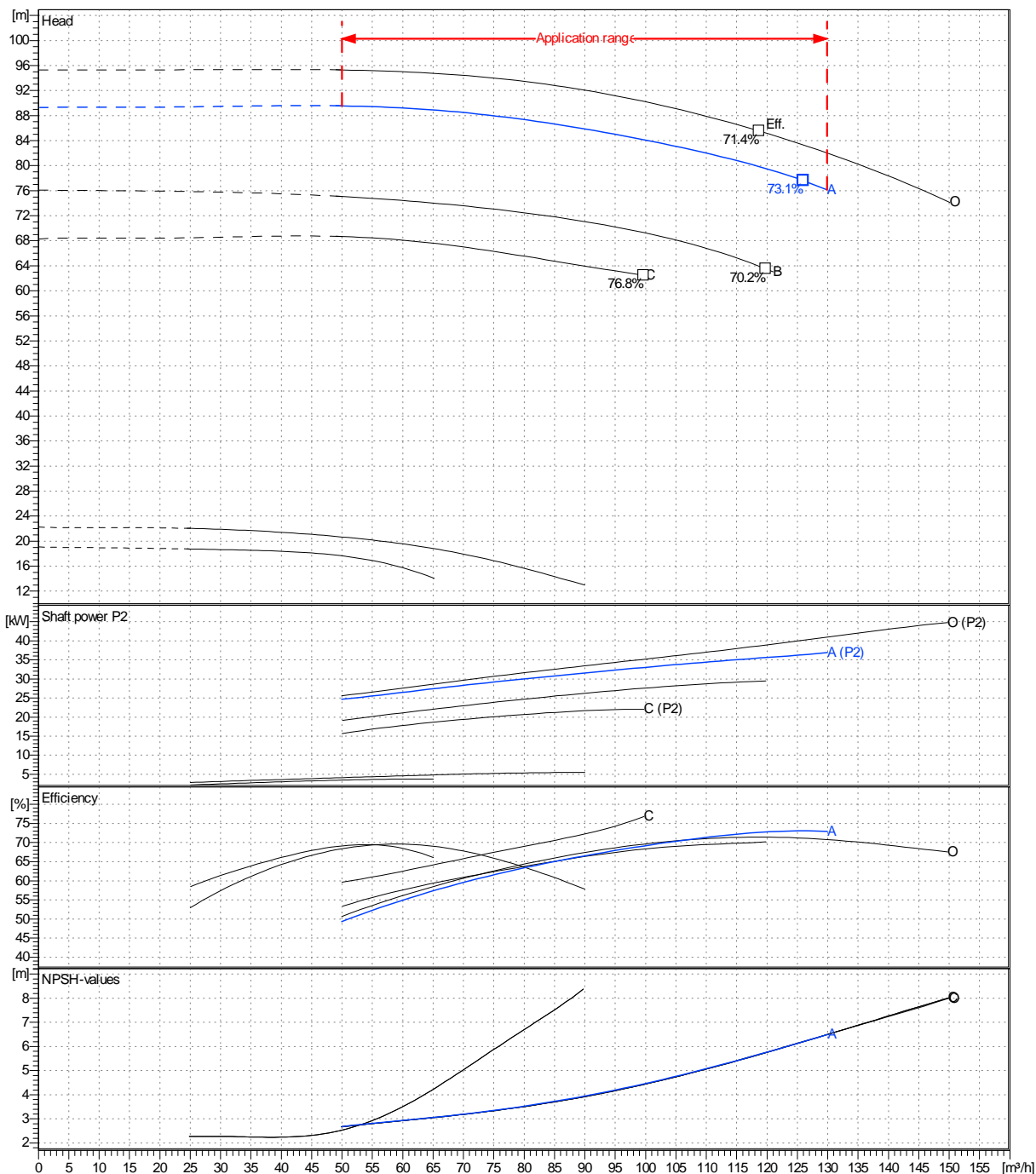
| | | | | |
|---------|------------|------------|-------------------|-------------|
| Project | Project ID | Created by | Created on | Last update |
| | | | 2020-08-18 | |

| | |
|---------------------|-------------|
| Receiver | From |
| Company name | |
| Respons. Department | |
| Person in charge | |
| Phone number | |
| Fax no | |
| E-mail address | |

| | | | |
|------------------------------|---|--------------------|---|
| Operating area | Flow | Head | Impeller type |
| Operating data specification | 0 m ³ /h | 0 m | Impeller construction: Closed |
| Pump data | m ³ /h | m | Sense of rotation: Clockwise from the drive end |
| | | | Outlet width: DN 65 |
| | Flow | Head | Shaft power P2 |
| | Min. Max. η Max. | H(Q=0) η Max. | P2(Q=0) Max. η Max. |
| | m ³ /h m ³ /h m ³ /h | m m | kW kW kW |
| | 50 130 126 | 89.3 77.6 | 36.9 36.4 |
| | | | Speed: 1/min 2900 |
| | | | Frequency: Hz |

Performance data based to: Water, pure [100%]; 20°C; 0.998kg/dm³; 1mm²/s

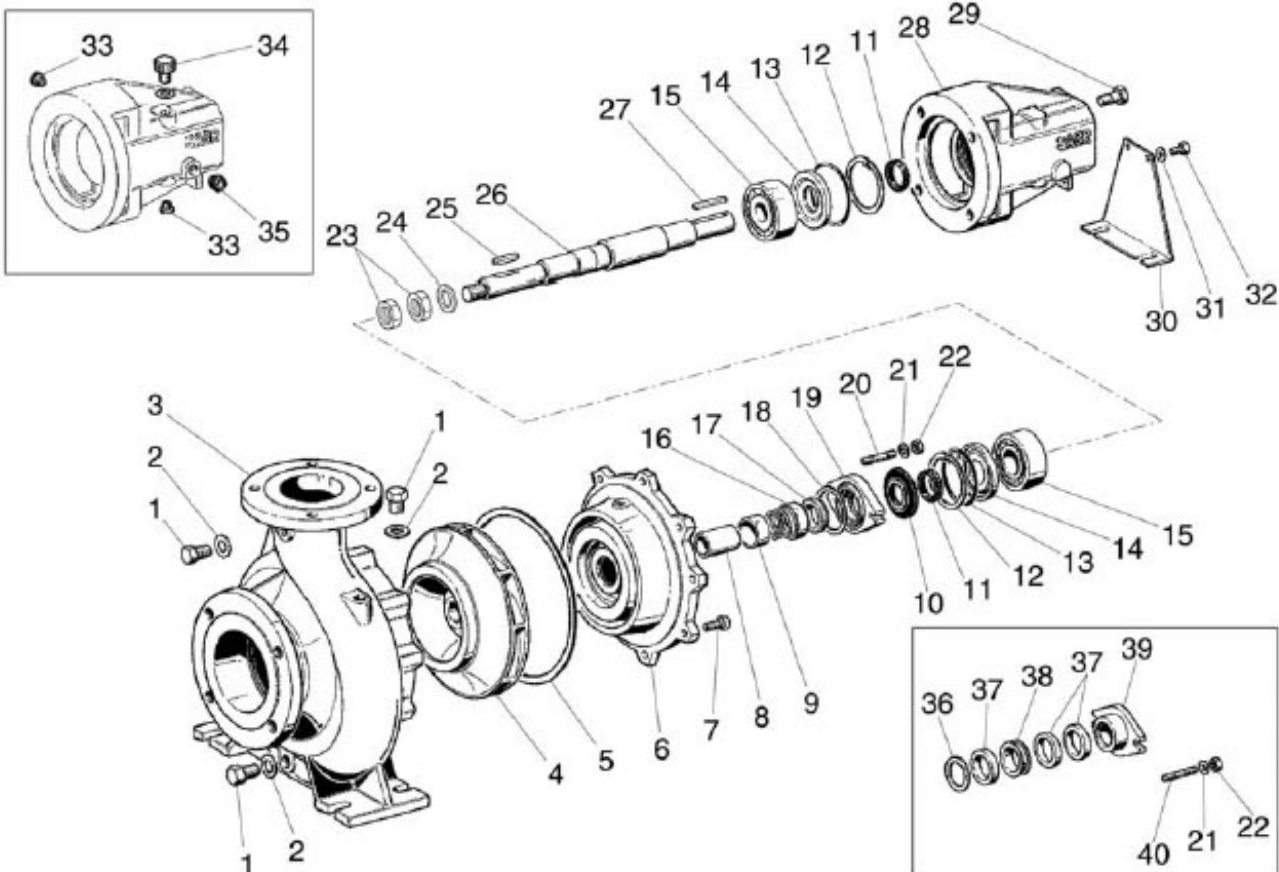
UNI EN ISO 9906:2012 - Grade 3B



| | | | | |
|---------|------------|------------|------------|-------------|
| Project | Project ID | Created by | Created on | Last update |
| | | | 2020-08-18 | |

Company name
Respons. Department
Person in charge
Phone number
Fax no
E-mail address

| | |
|--|--|
| | |
| | |
| | |
| | |
| | |
| | |



Project

Project ID

Created by

Created on
2020-08-18

Last update