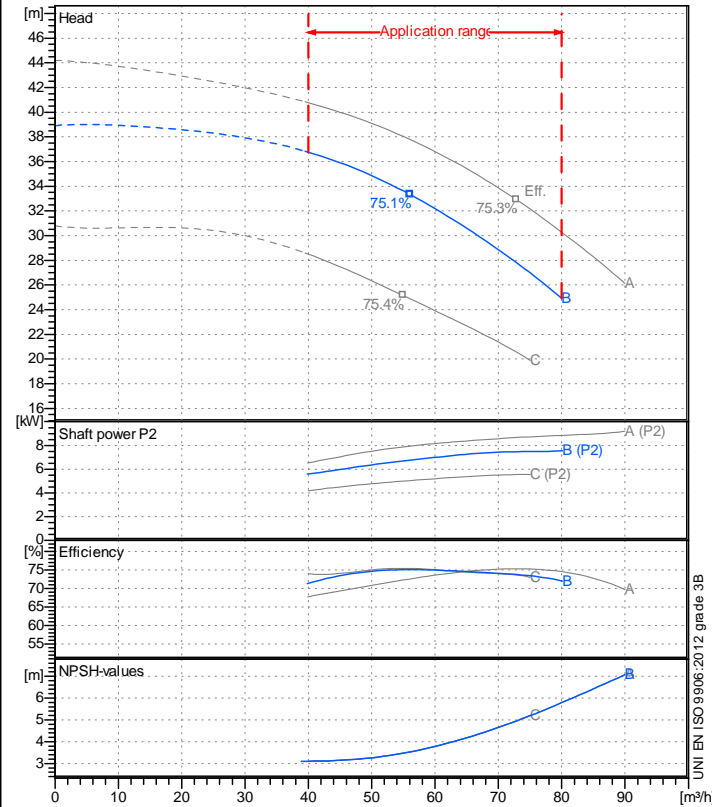


Receiver

From

 Company name  
 Respons. Department  
 Person in charge  
 Phone number  
 Fax no  
 E-mail address

**Operating data specification**

Nominal flow	m <sup>3</sup> /h 0
Nominal head	m 0
Static head	m 0
NPSH - v alue of plant	m 0
Inlet pressure	bar 0.09793
Fluid	Water, pure
Operating temperature t A	°C 20
Density at t A	kg/dm <sup>3</sup> 0.9983
Kin. viscosity at t A	mm <sup>2</sup> /s 1.005

**Pump**

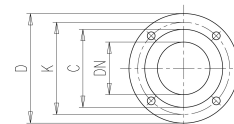
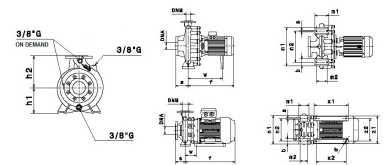
Pump name	IR50-160NB		
Size	65/50/160		
Design	0,4		
Speed 1/min	2900	No of stages	1
Impeller type			
Flow	Nominal	m <sup>3</sup> /h	
	Max-	m <sup>3</sup> /h	80
	Min-	m <sup>3</sup> /h	40
Head	Nominal	m	
	Max-	m	36.8
	Min-	m	24.9
Head H(Q=0)	m	38.9	
NPSH 3%	m		
Max. working pressure	bar	3.81	
Shaft power	kW		
Efficiency	%		
Max absorbed power	kW	7.5404	

**Materials Pump**

Shaft	Stainless steel AISI 431 (1.4057)
Impeller	Cast iron EN-GJL-250
Pump body	Cast iron EN-GJL-250
Seal disc	Cast iron EN-GJL-250
Gasket	Natural fiber
Mechanical seal	BVEG (Grafite/Ossido Allumina/EPDM)

**Dimensions in mm**

a	100
b	50
d	12
f	504
h1	160
h2	180
m1	100
m2	71
n1	265
n2	212
s	13
w	108
x1	320
x2	280
z1	261
z2	216



C	102	C	122
D	165	D	185
DN	50	DN	65
K	125	K	145
n°	4 x 19 mm	n°	4 x 19 mm

<b>Motor</b>	Frame size	132		
Manufacturer / Type	SAER 132-2P-10			
Rated power	kW	7.5	Efficiency 4/4	88.1 %
Electric current	A	14.2 A	Speed	1/min 2918
Electric voltage	V	400 V	3~	Hz 50
Starting mode	Star-delta			
Degree of protection	IP 55	Insulation class	F	

Remarks:

Project	Project ID	Created by	Created on	Last update
			2020-09-24	

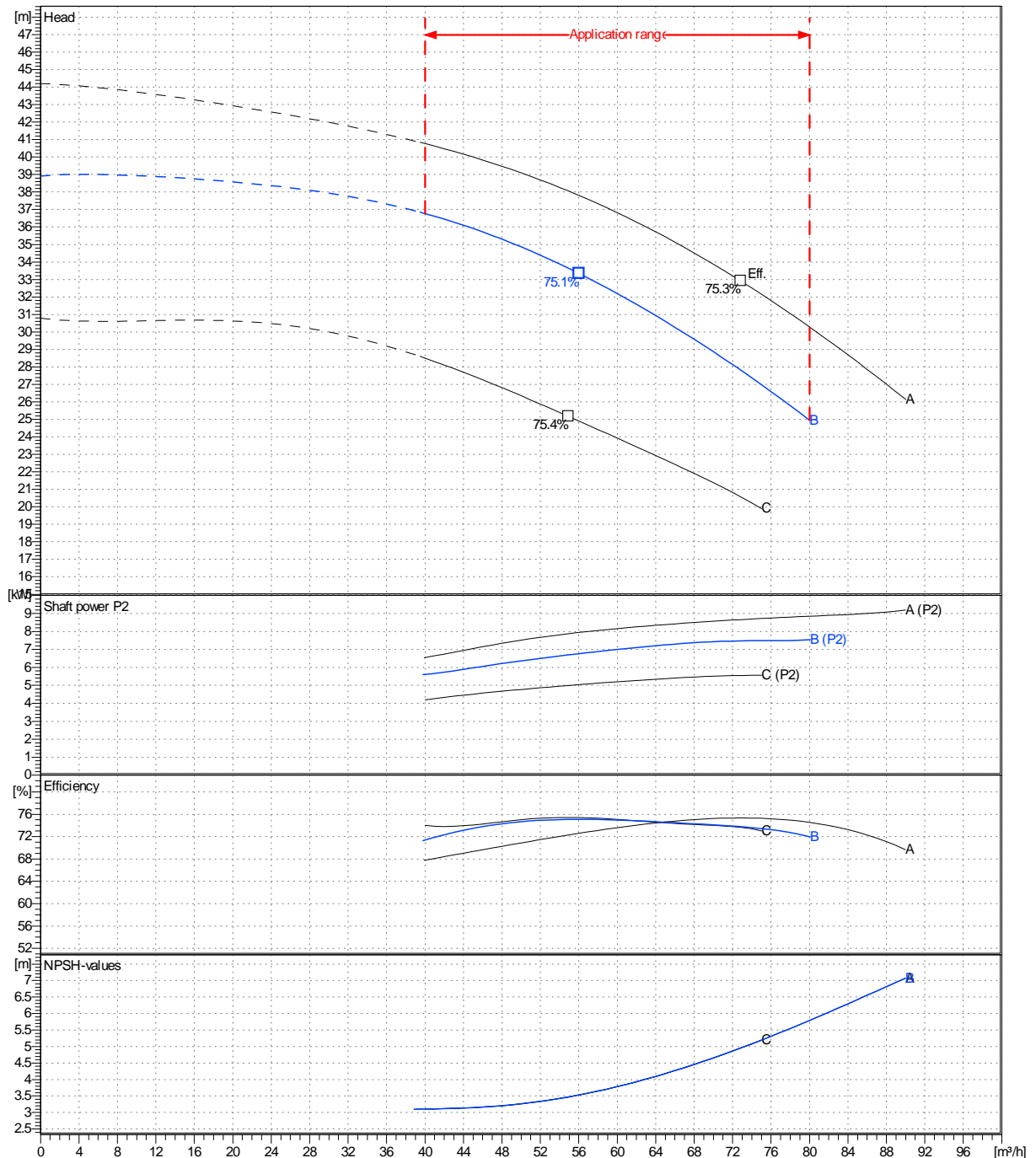
Company name  
 Respons. Department  
 Person in charge  
 Phone number  
 Fax no  
 E-mail address

Receiver	From

Operating area	Flow	Head	Impeller type
Operating data specification	0 m <sup>3</sup> /h	0 m	Impeller construction: Closed
Pump data	m <sup>3</sup> /h	m	Sense of rotation: Clockwise from the drive end
			Outlet width: DN50
	Flow	Head	Shaft power P2
	Min. Max. $\eta$ Max.	H(Q=0) $\eta$ Max.	P2(Q=0) Max. $\eta$ Max.
	m <sup>3</sup> /h m <sup>3</sup> /h m <sup>3</sup> /h	m m	kW kW kW
	40 80 56	38.9 33.3	7.54 6.76
			Speed: 1/min 2900
			Frequency: Hz 50 Hz

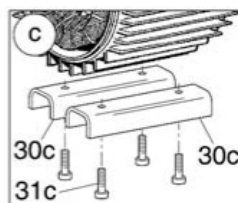
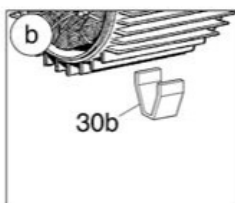
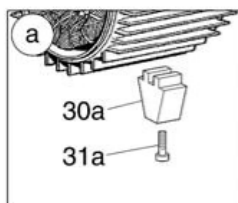
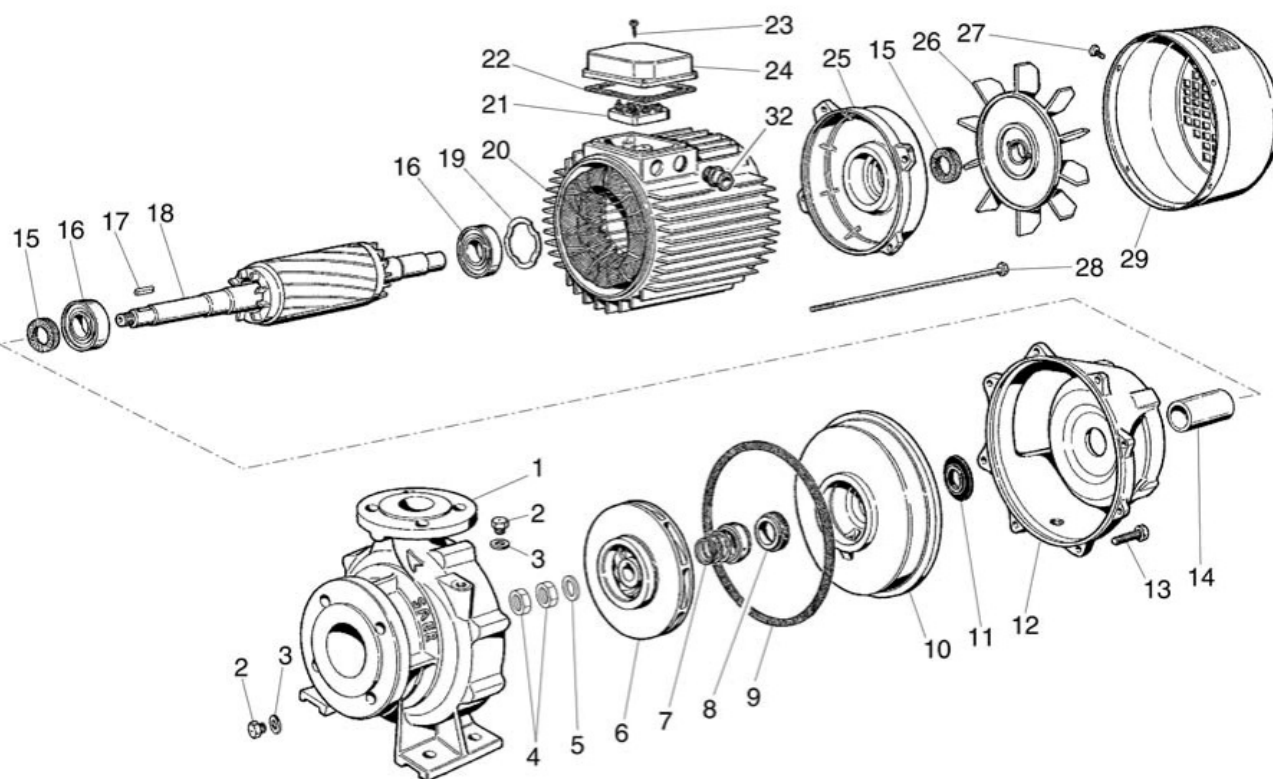
 Performance data based to: Water, pure [100%] ; 20°C; 0.998kg/dm<sup>3</sup>; 1mm<sup>2</sup>/s

UNI EN ISO 9906:2012 - Grade 3B



Project	Project ID	Created by	Created on	Last update
			2020-09-24	

Company name  
Respons. Department  
Person in charge  
Phone number  
Fax no  
E-mail address



Project

Project ID

Created by

Created on  
**2020-09-24**

Last update