

NS 3069 SH 3~ Adaptive 272

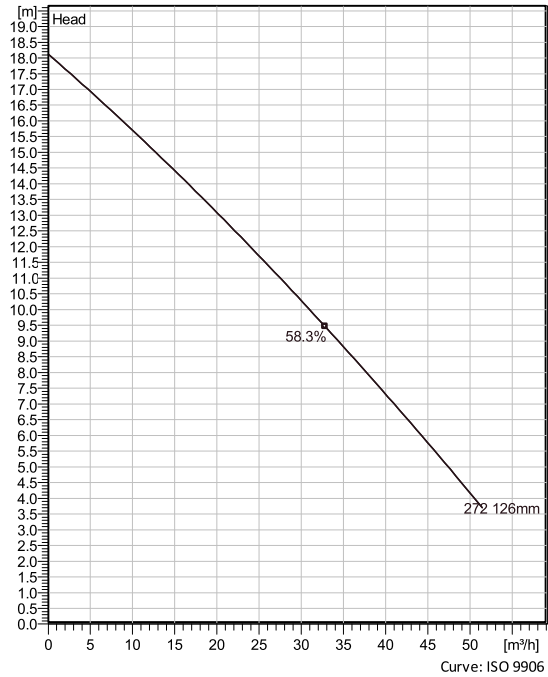
Patented self cleaning semi-open channel impeller, ideal for pumping in most waste water applications. Possible to be upgraded with Guide-pin® for even better clogging resistance. Modular based design with high adaptation grade.



Technical specification



Curves according to: Water, pure [100%], 4 °C, 999.9 kg/m³, 1.5692 mm²/s



Configuration

Motor number N3069.160 13-08-2BB-W 1.7KW	Installation type S - Portable Semi permanent, Wet
Impeller diameter 126 mm	Discharge diameter 50 mm

Pump information

Impeller diameter 126 mm
Discharge diameter 50 mm
Inlet diameter 100 mm
Maximum operating speed 2700 1/min
Number of blades 2
Max. fluid temperature 40 °C

Materials

Impeller Grey cast iron
Stator housing material Grey cast iron

Block

Created on 11/23/2020

Last update

11/23/2020

NS 3069 SH 3~ Adaptive 272

Technical specification



Motor - General

Motor number N3069.160 13-08-2BB-W 1.7KW	Phases 3~	Rated speed 2700 1/min	Rated power 1.7 kW
Approval No	Number of poles 2	Rated current 3.8 A	Stator variant 1
Frequency 50 Hz	Rated voltage 400 V	Insulation class F	Type of Duty S1
Version code 160			

Motor - Technical

Power factor - 1/1 Load 0.87	Motor efficiency - 1/1 Load 75.2 %	Total moment of inertia 0.00349 kg m ²	Starts per hour max. 15
Power factor - 3/4 Load 0.81	Motor efficiency - 3/4 Load 78.8 %	Starting current, direct starting 17 A	
Power factor - 1/2 Load 0.70	Motor efficiency - 1/2 Load 79.6 %	Starting current, star-delta 5.66 A	

NS 3069 SH 3~ Adaptive 272

Performance curve

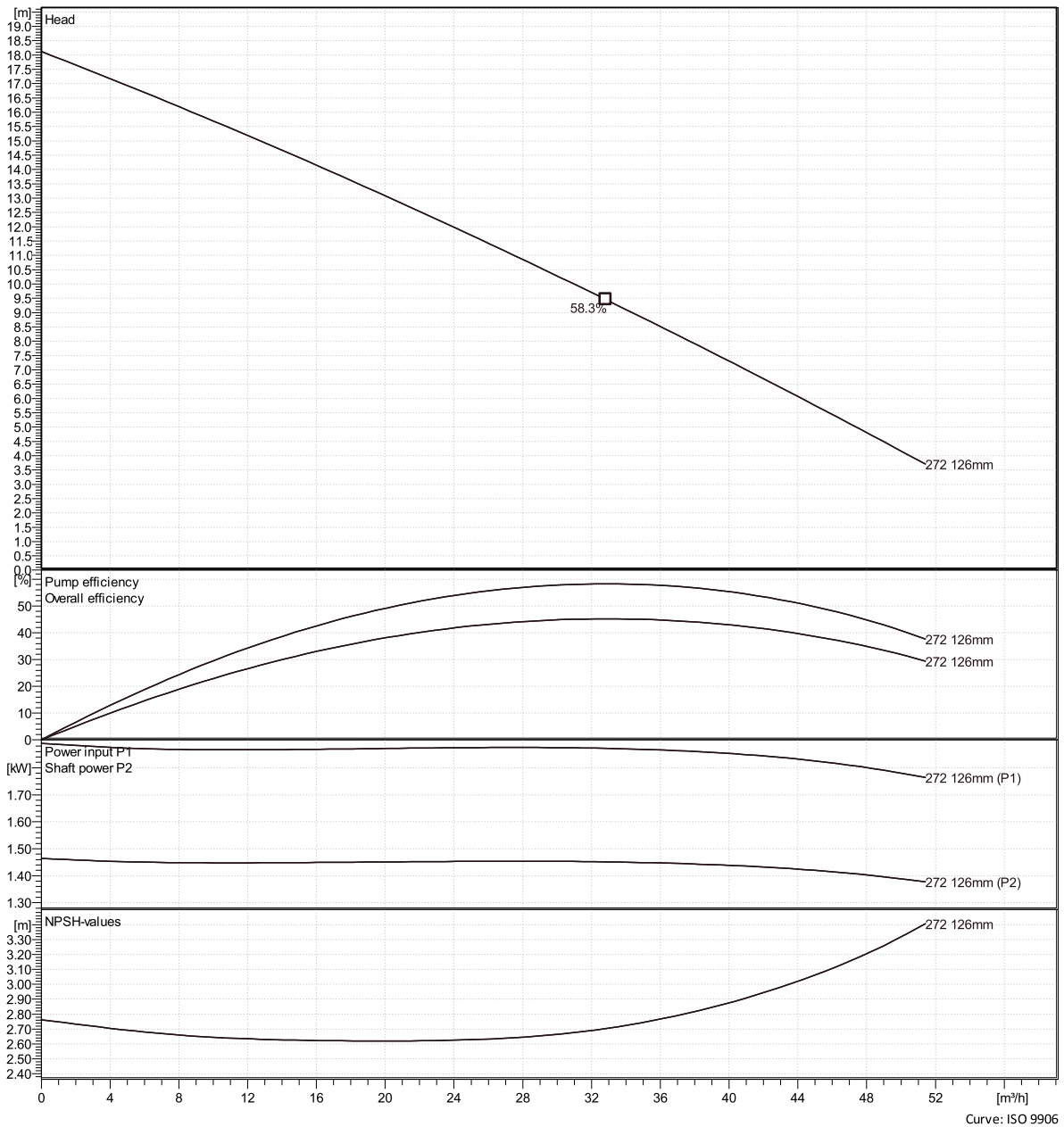


Duty point

Flow

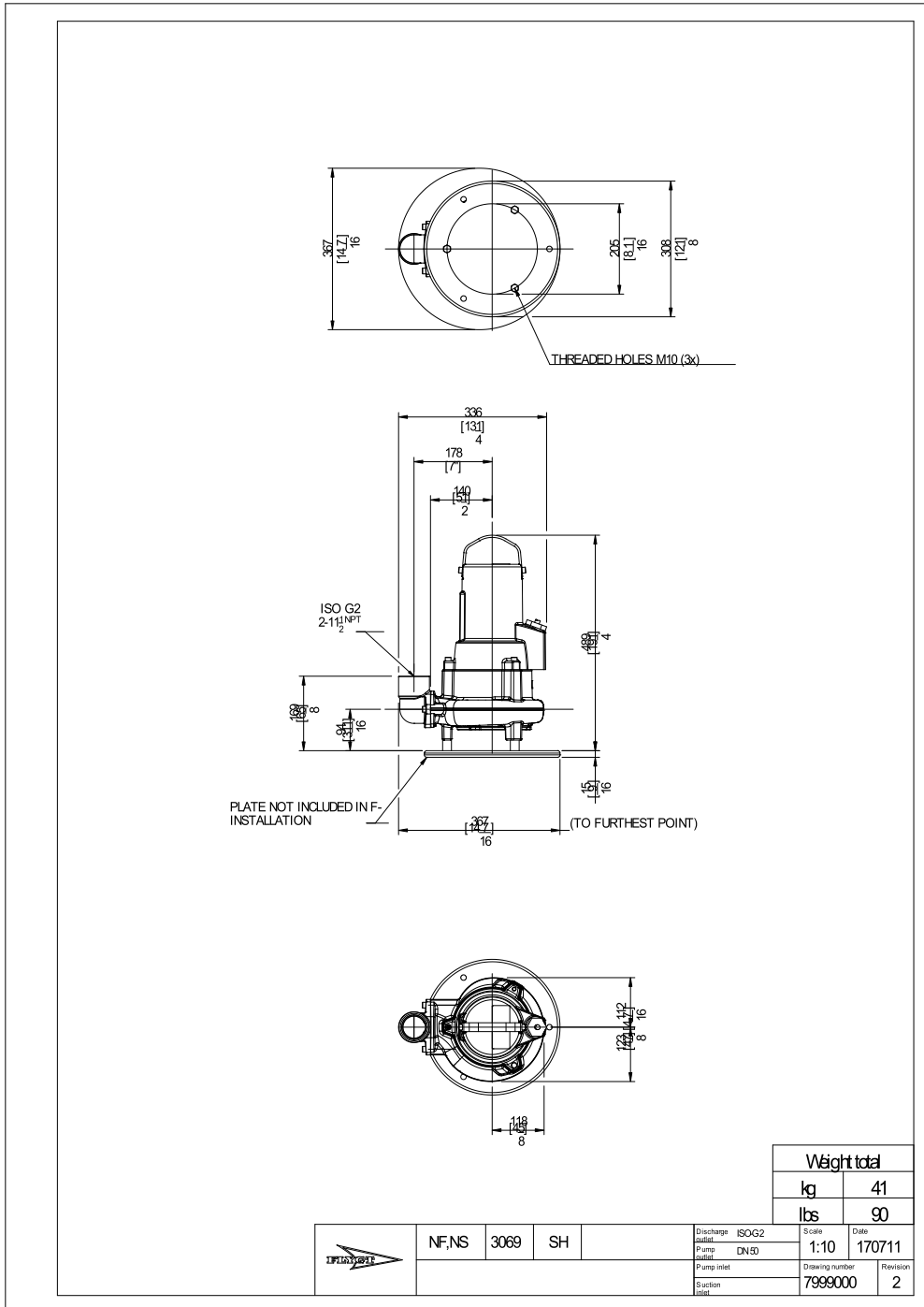
Head

Curves according to: Water, pure [100%], 4 °C, 999.9 kg/m³, 1.5692 mm²/s



NS 3069 SH 3~ Adaptive 272

Dimensional drawing



Block