

NX 3069 SH 3~ Adaptive 272

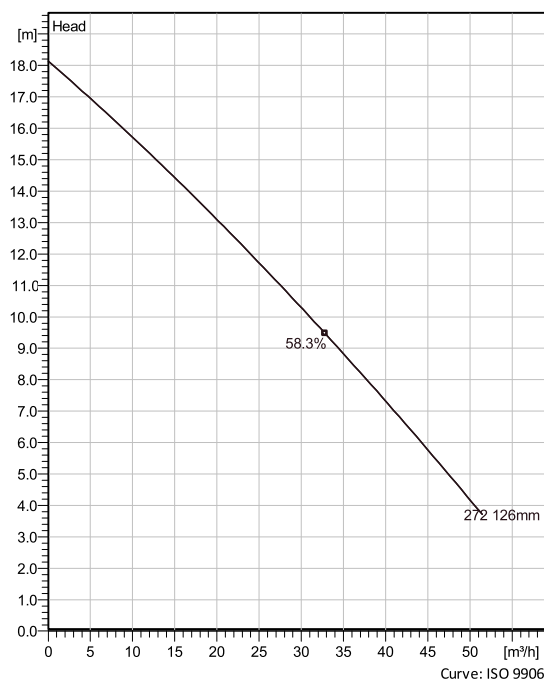
Patented self cleaning semi-open channel impeller, ideal for pumping in most waste water applications. Possible to be upgraded with Guide-pin® for even better clogging resistance. Modular based design with high adaptation grade.



Technical specification



Curves according to: Water, pure [100%], 4 °C, 999.9 kg/m³, 1.5692 mm²/s



Configuration

Motor number	Installation type
N3069.160 13-08-2BB-W	X - Optional installation, Wet
Impeller diameter	Discharge diameter
126 mm	50 mm

Pump information

Impeller diameter
126 mm
Discharge diameter
50 mm
Inlet diameter
100 mm
Maximum operating speed
2695 rpm
Number of blades
2

Max. fluid temperature
40 °C

Materials

Impeller
Grey cast iron
Stator housing material
Grey cast iron

Project
Block

Created by Vilma Razumaite
Created on 2/24/2021 **Last update** 2/24/2021

NX 3069 SH 3~ Adaptive 272

Technical specification



Motor - General

Motor number N3069.160 13-08-2BB-W 1.7KW	Phases 3~	Rated speed 2695 rpm	Rated power 1.7 kW
ATEX approved No	Number of poles 2	Rated current 3.8 A	Stator variant 5
Frequency 50 Hz	Rated voltage 400 V	Insulation class F	Type of Duty S1
Version code 160			

Motor - Technical

Power factor - 1/1 Load 0.87	Motor efficiency - 1/1 Load 74.8 %	Total moment of inertia 0.00349 kg m ²	Starts per hour max. 15
Power factor - 3/4 Load 0.81	Motor efficiency - 3/4 Load 78.3 %	Starting current, direct starting 17 A	
Power factor - 1/2 Load 0.69	Motor efficiency - 1/2 Load 79.1 %	Starting current, star-delta 5.66 A	

Project
Block

Created by Vilma Razumaite
Created on 2/24/2021 **Last update** 2/24/2021

NX 3069 SH 3~ Adaptive 272

Performance curve

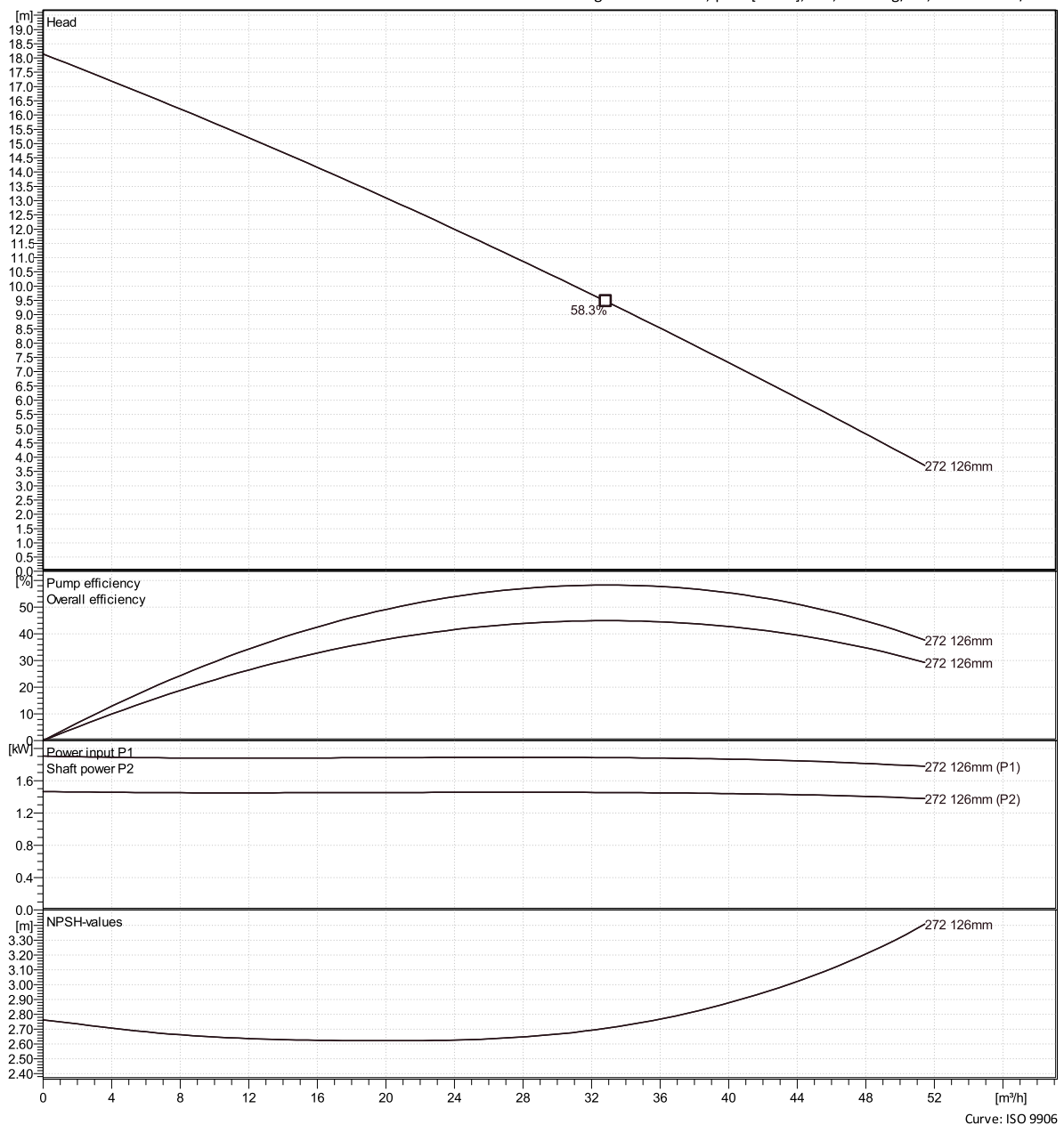


Duty point

Flow

Head

Curves according to: Water, pure [100%], 4 °C, 999.9 kg/m³, 1.5692 mm²/s

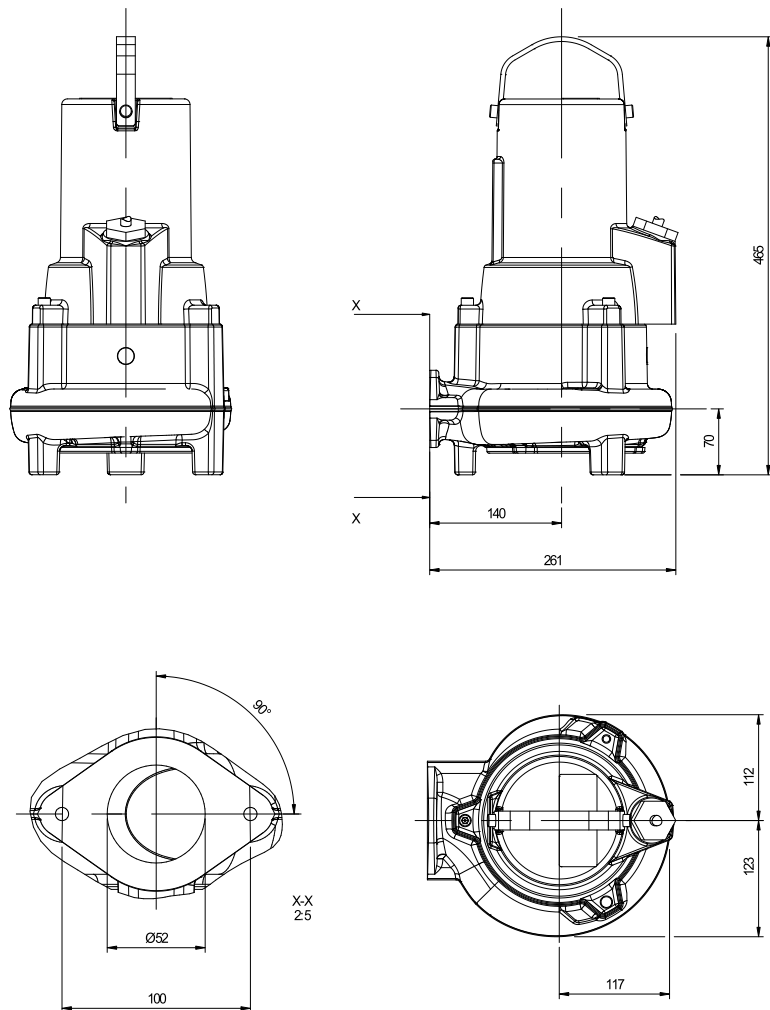



Project
Block

Created by Vilma Razumaite
Created on 2/24/2021 Last update 2/24/2021

NX 3069 SH 3~ Adaptive 272

Dimensional drawing



					Weight pump					
					kg	37				
	NX	3069	SH		Discharge outlet	Scale	Date			
					Pump outlet	1:5	190910			
					Pump inlet					
					Suction inlet					
					Drawing number	Revision				
					7999600	3				

Project
Block

Created by Vilma Razumaite
Created on 2/24/2021 Last update 2/24/2021