

PL 7040 ** 3~ 634

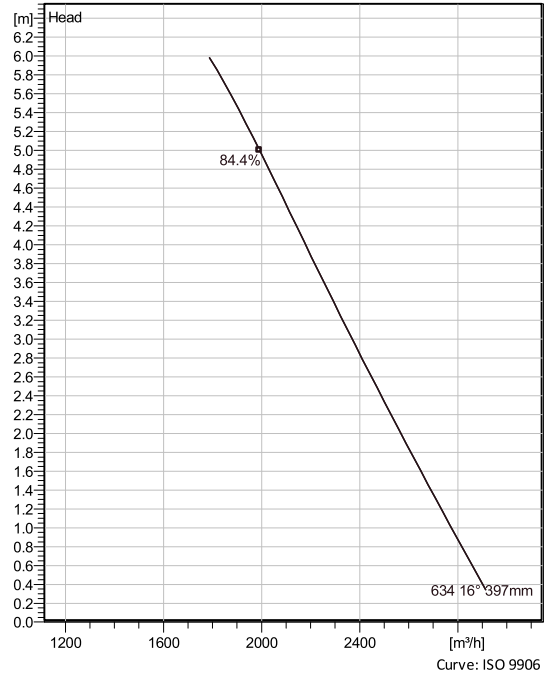
Axial flow propeller pumps with fixed or adjustable pitch blades for high capacity low head pumping of clean or slightly contaminated liquids. Cast iron design optimized for high-flow efficiency.



Technical specification



Curves according to: Water, pure [100%], 4 °C, 999.9 kg/m³, 1.5692 mm²/s



Configuration

Motor number P7040.180 35-25-6AA-W 50KW	Installation type L - Column pipe Semi permanent, Wet
Impeller diameter 397 mm	Discharge diameter 600 mm

Pump information

Impeller diameter 397 mm
Discharge diameter 600 mm
Inlet diameter
Maximum operating speed 980 rpm
Number of blades 3
Max. fluid temperature 40 °C

Materials

Impeller Stainless steel

Project
Block

Created by
Created on 7/28/2020

Last update

PL 7040 ** 3~ 634

Technical specification



Motor - General

Motor number P7040.180 35-25-6AA-W 50KW	Phases 3~	Rated speed 980 rpm	Rated power 50 kW
ATEX approved No	Number of poles 6	Rated current 101 A	Stator variant 1
Frequency 50 Hz	Rated voltage 400 V	Insulation class H	Type of Duty S1
Version code 180			

Motor - Technical

Power factor - 1/1 Load 0.79	Motor efficiency - 1/1 Load 89.5 %	Total moment of inertia 0.937 kg m ²	Starts per hour max. 30
Power factor - 3/4 Load 0.74	Motor efficiency - 3/4 Load 90.5 %	Starting current, direct starting 545 A	
Power factor - 1/2 Load 0.63	Motor efficiency - 1/2 Load 90.5 %	Starting current, star-delta 182 A	

Project
Block

Created by
Created on 7/28/2020

Last update

PL 7040 ** 3~ 634

Performance curve

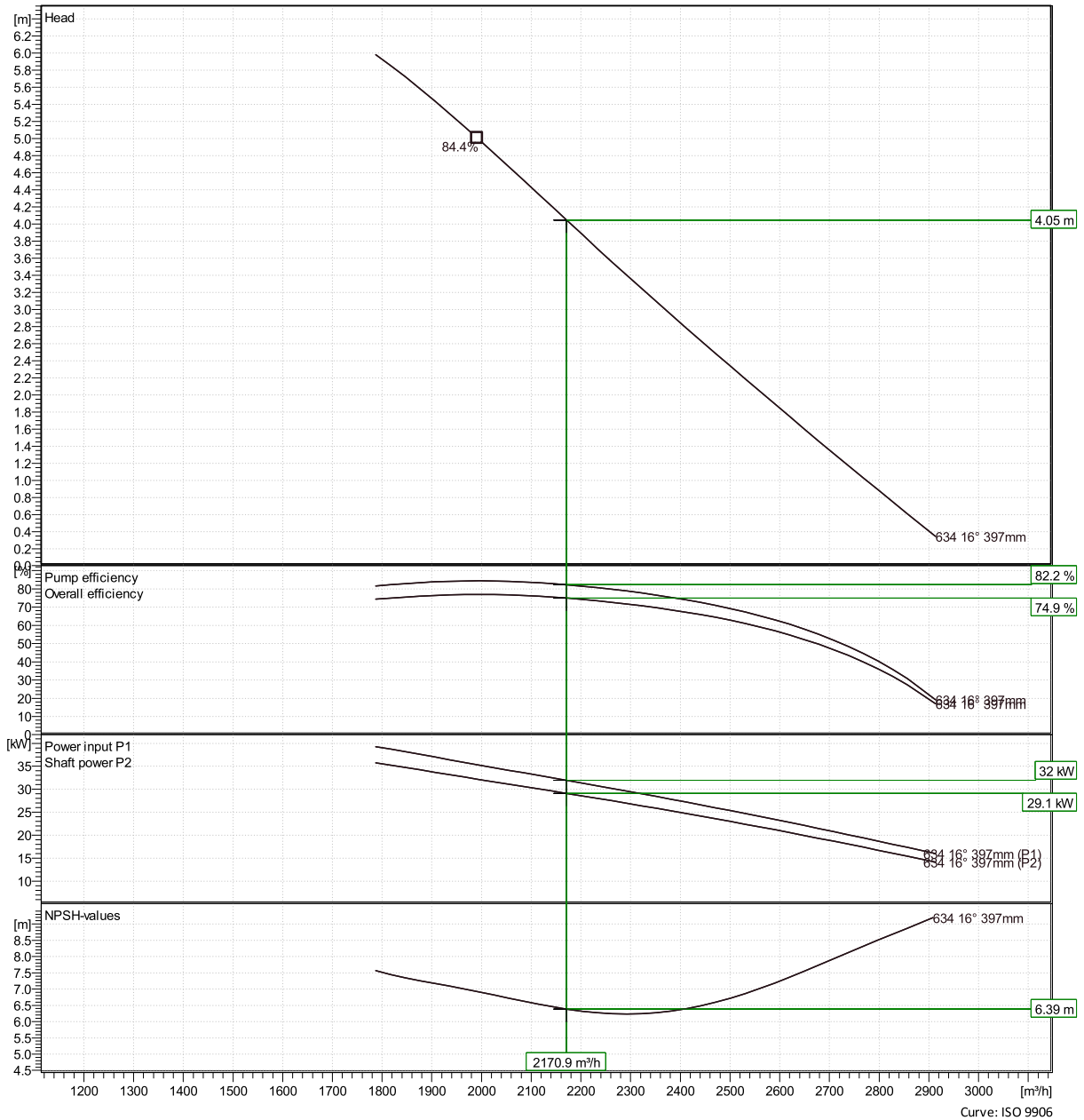


Duty point

Flow
2170 m³/h

Head
4.05 m

Curves according to: Water, pure [100%], 4 °C, 999.9 kg/m³, 1.5692 mm²/s



Project	Created by	Last update
Block	Created on 7/28/2020	

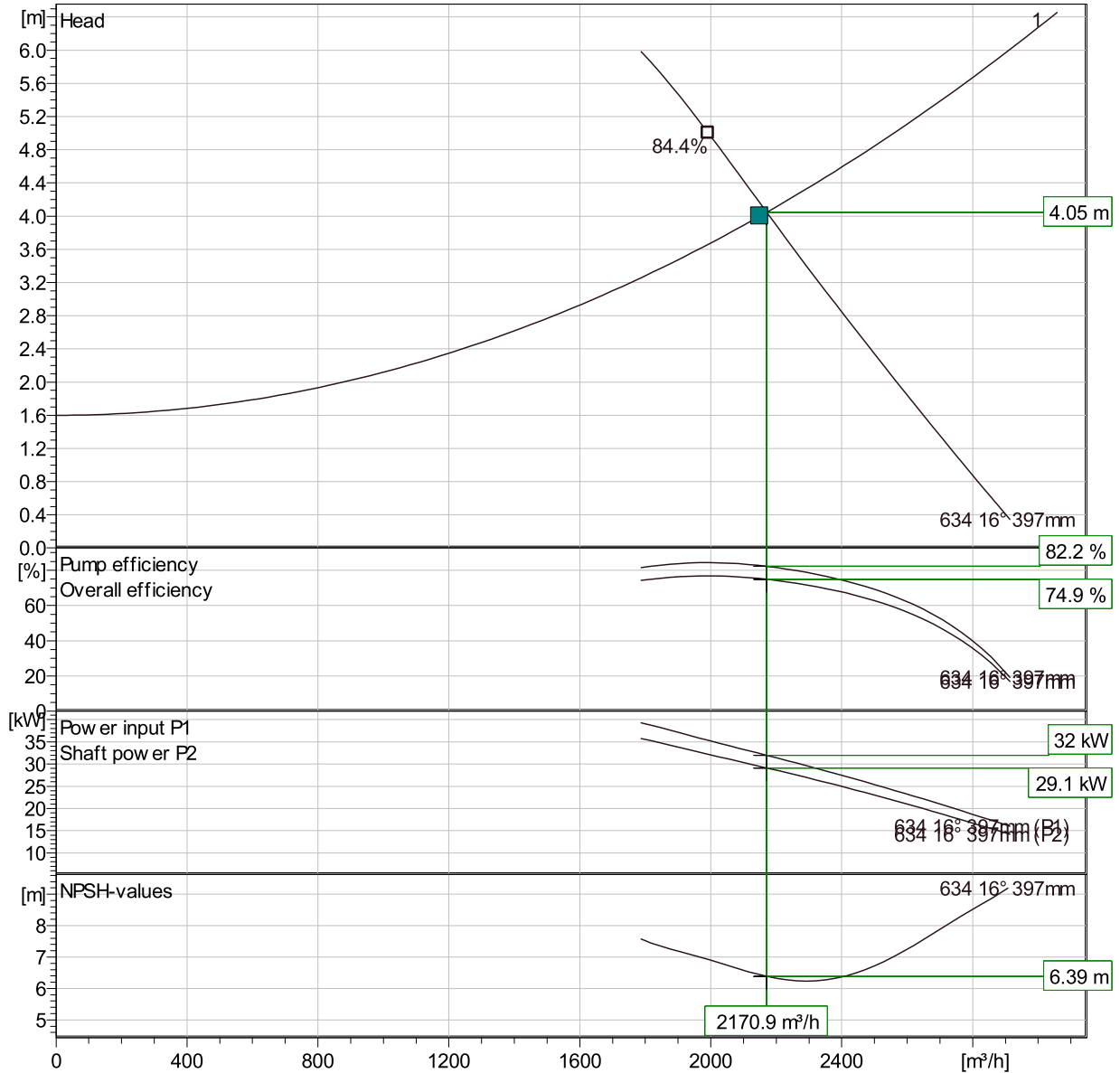
Curve: ISO 9906

PL 7040 ** 3~ 634

Duty Analysis



Curves according to: Water, pure [100%]; 4°C; 999.9kg/m³; 1.5692mm²/s

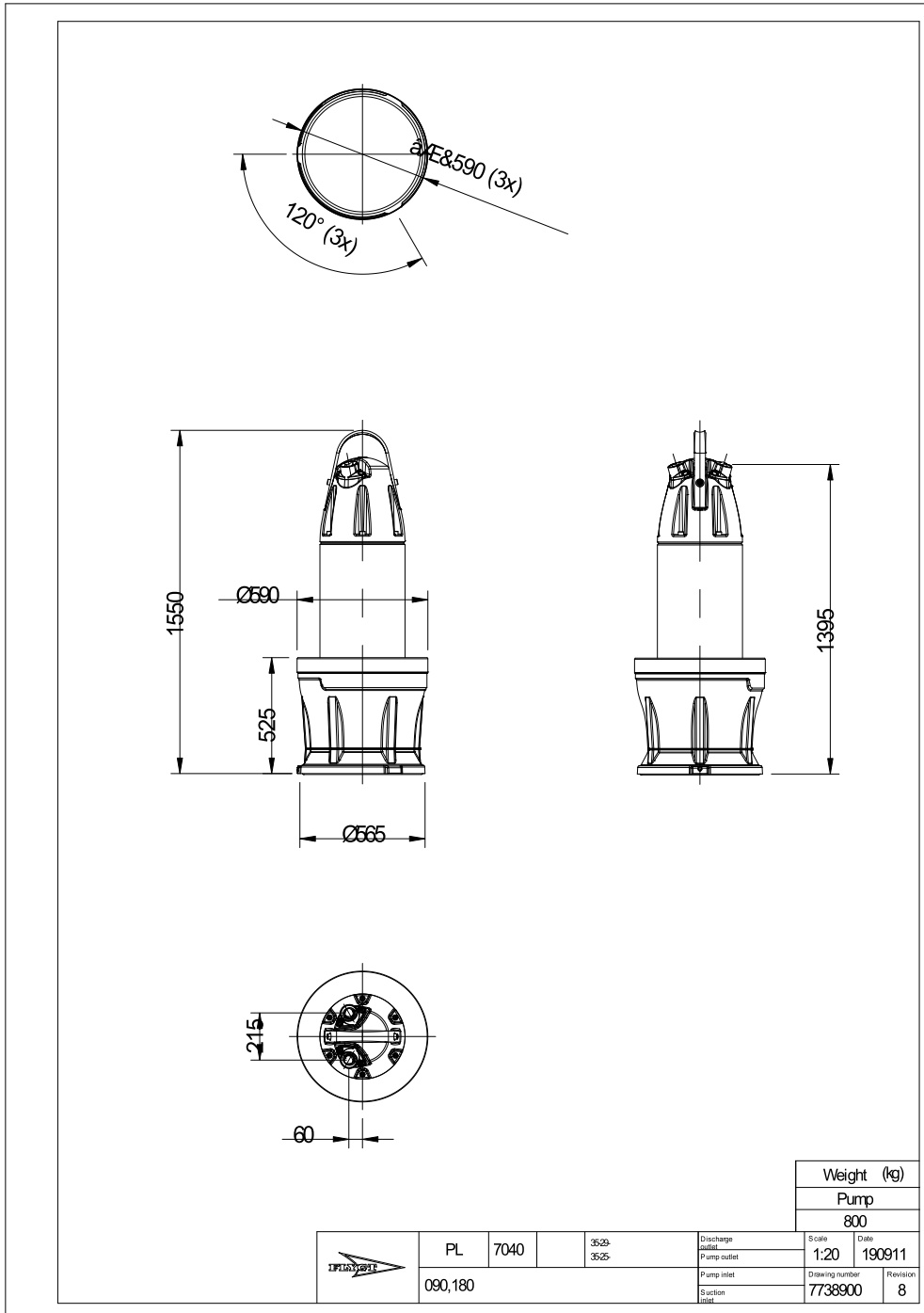


Operating characteristics

Pumps / Systems	Flow	Head	Shaft power	Flow	Head	Shaft power	Hydr.eff.	Specific Energy	NPSHre
1	2170 m ³ /h	4.05 m	29.1 kW	2170 m ³ /h	4.05 m	29.1 kW	82.2 %	0.0147 kWh/m ³	6.39 m

Project	Created by	Last update
Block	Created on 7/28/2020	

PL 7040 ** 3~ 634
 Dimensional drawing



Project
Block

Created by
Created on 7/28/2020

Last update