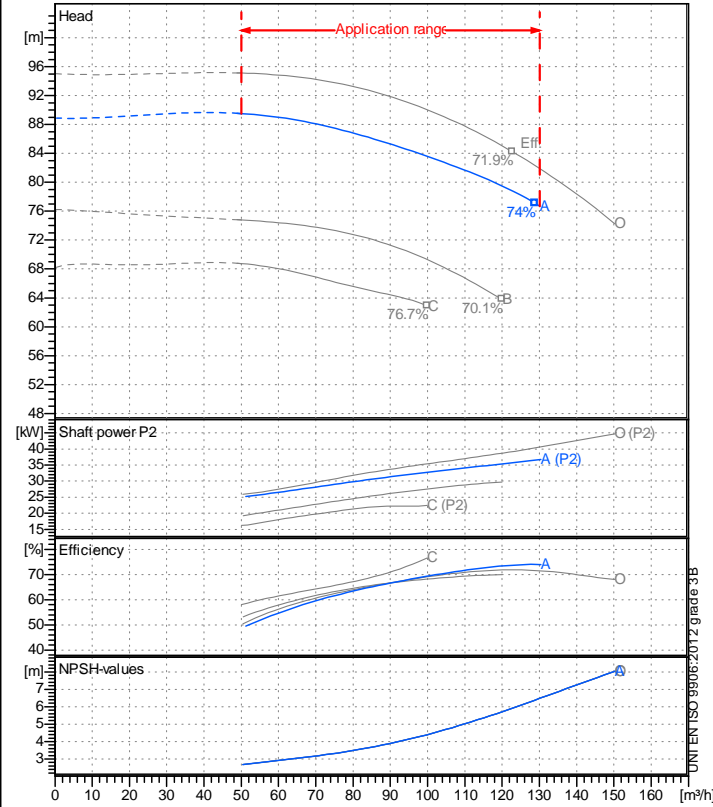


Receiver

From

 Company name
 Respons. Department
 Person in charge
 Phone number
 Fax no
 E-mail address


Operating data specification

Nominal flow	m ³ /h 0
Nominal head	m 0
Static head	m 0
NPSH - v value of plant	m 0
Inlet pressure	bar 0.09793
Fluid	Water, pure
Operating temperature t A	°C 20
Density at t A	kg/dm ³ 0.9983
Kin. viscosity at t A	mm ² /s 1.005

Pump

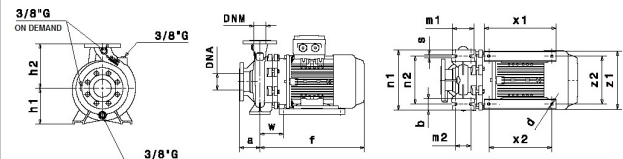
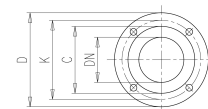
Pump name	IR65-250NA		
Size	80/65/250		
MEI (Reg. 547/2002 EU) >	0,5		
Speed 1/min	2900	No of stages	1
Impeller type			
Flow	Nominal	m ³ /h	
	Max-	m ³ /h	130
	Min-	m ³ /h	50
Head	Nominal	m	
	Max-	m	89.5
	Min-	m	76.7
Head H(Q=0)	m 88.9		
NPSH 3%	m		
Max. working pressure	bar 8.7		
Shaft power	kW		
Efficiency	%		
Max absorbed power	kW 36.696		

Materials Pump

Shaft	Stainless steel AISI 431 (1.4057)		
Impeller	Cast iron EN-GJL-250		
Pump body	Cast iron EN-GJL-250		
Seal disc	Cast iron EN-GJL-250		
Gasket	Natural fiber		
Mechanical seal	BVEG (Grafito/Ossido Allumina/EPDM)		

Dimensions in mm

a	100	z1	400	DNM	DNA	
b	80	z2	318	C	122	C
d	18			D	185	D
f	761			DN	65	DN
h1	200			K	145	K
h2	250			n°	4 x 19 mm	8 x 19 mm
m1	160					
m2	120					
n1	360					
n2	280					
s	18					
w	268					
x1	363					
x2	305					



Motor	Manufacturer / Type	SAER	200-2P-50	
Efficiency	IEC 60034-30	IE3		
Rated power	kW 37	Efficiency 4/4	93.9 %	
Number of poles	2	Frame size	200	
Electric current	A 65.3 A	Speed	1/min	2963
Electric voltage	V 400 V	3~	Hz	50
Starting mode	Unknown			
Degree of protection	IP 55	Insulation class	F	

Remarks:

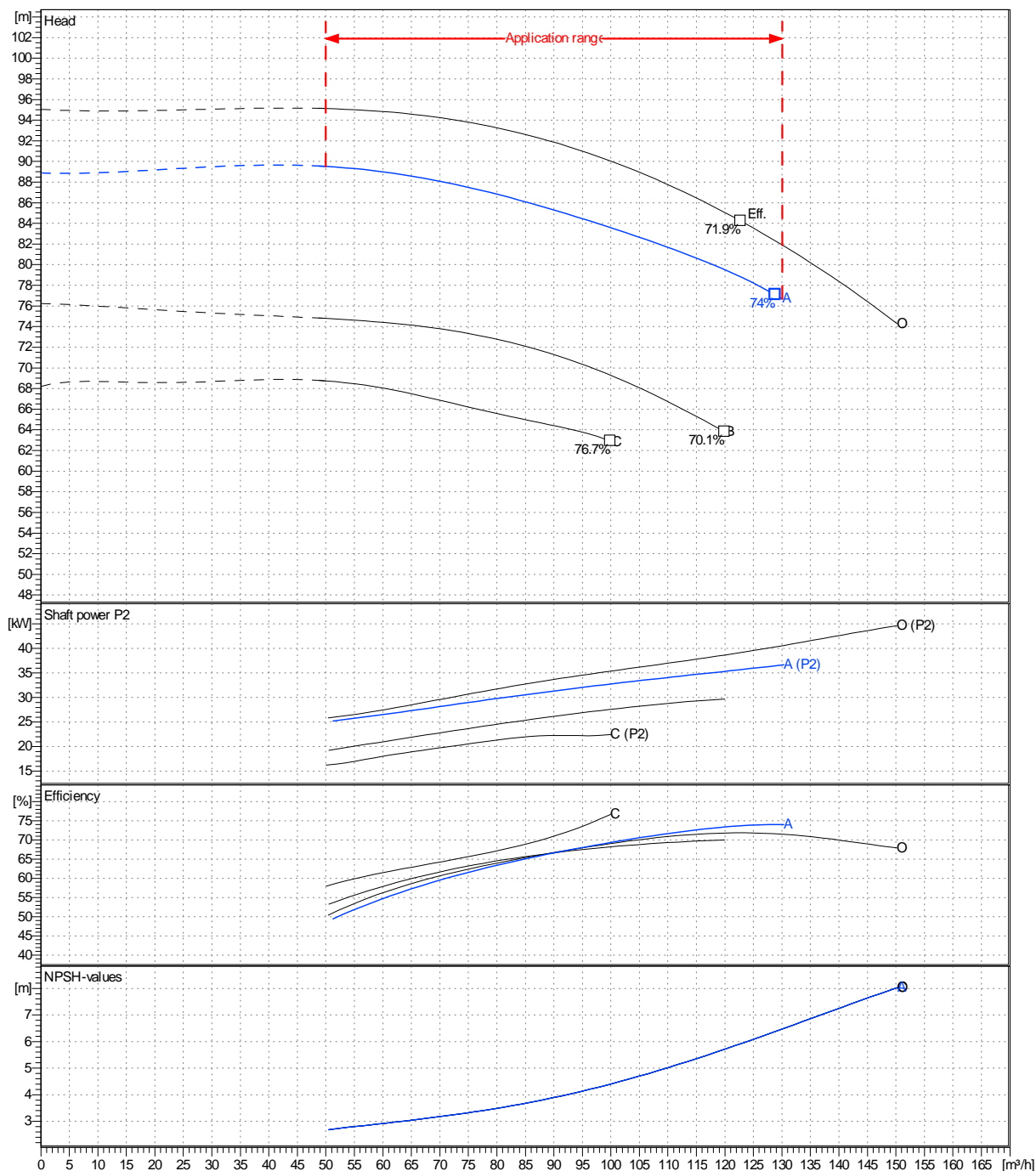
Project	Project ID	Created by	Created on	Last update
			2021-07-27	

Receiver	From
Company name	
Respons. Department	
Person in charge	
Phone number	
Fax no	
E-mail address	

Operating area	Flow	Head	Impeller type
Operating data specification	0 m ³ /h	0 m	Impeller construction: Closed
Pump data	m ³ /h	m	Sense of rotation: Clockwise from the drive end
			Outlet width: DN65
	Flow	Head	Shaft power P2
	Min. Max. η Max.	H(Q=0) η Max.	P2(Q=0) Max. η Max.
	m ³ /h m ³ /h m ³ /h	m m	kW kW kW
	50 130 129	88.9 77.1	36.7 36.5
			Speed: 1/min 2900
			Frequency: Hz 50 Hz

Performance data based to: Water, pure [100%]; 20°C; 0.998kg/dm³; 1mm²/s

UNI EN ISO 9906:2012 - Grade 3B



Project	Project ID	Created by	Created on	Last update
			2021-07-27	

Revision no

Pump dimensions

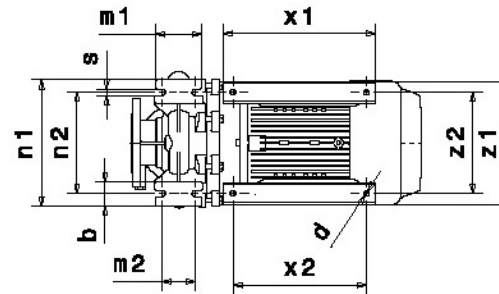
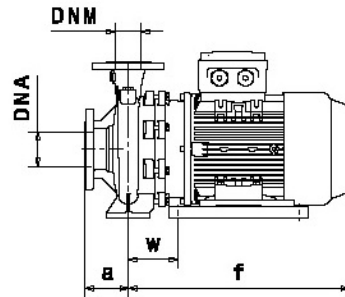
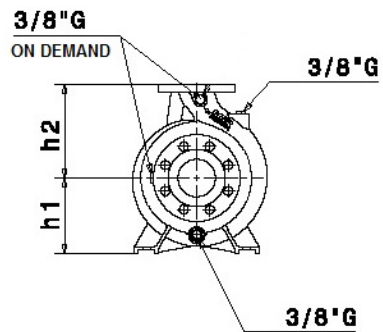
Connections

Suction side DN80 PN10 / PN16	Discharge port DN65 PN10 / PN16
-------------------------------------	---------------------------------------

Dimensions in mm

a
b
d
f
h1
h2
m1
m2
n1
n2
s
w
x1
x2
z1
z2

100
80
18
761
200
250
160
120
360
280
18
268
363
305
400
318



Disegni dimensionali e immagini non vincolanti. Saer si riserva il diritto di effettuare cambiamenti senza alcun preavviso.
Dimensional drawing and picture are not binding. Saer reserves the right to make changes without prior notice.

Project

Project ID

Created by

Created on
2021-07-27

Last update