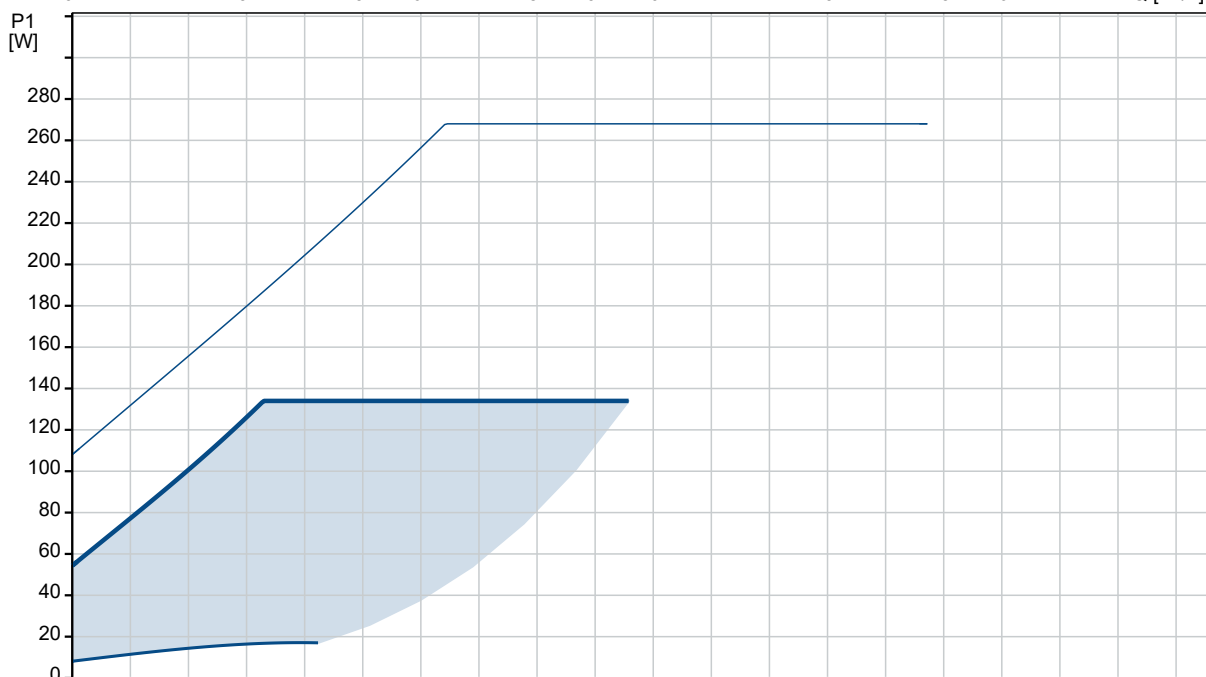
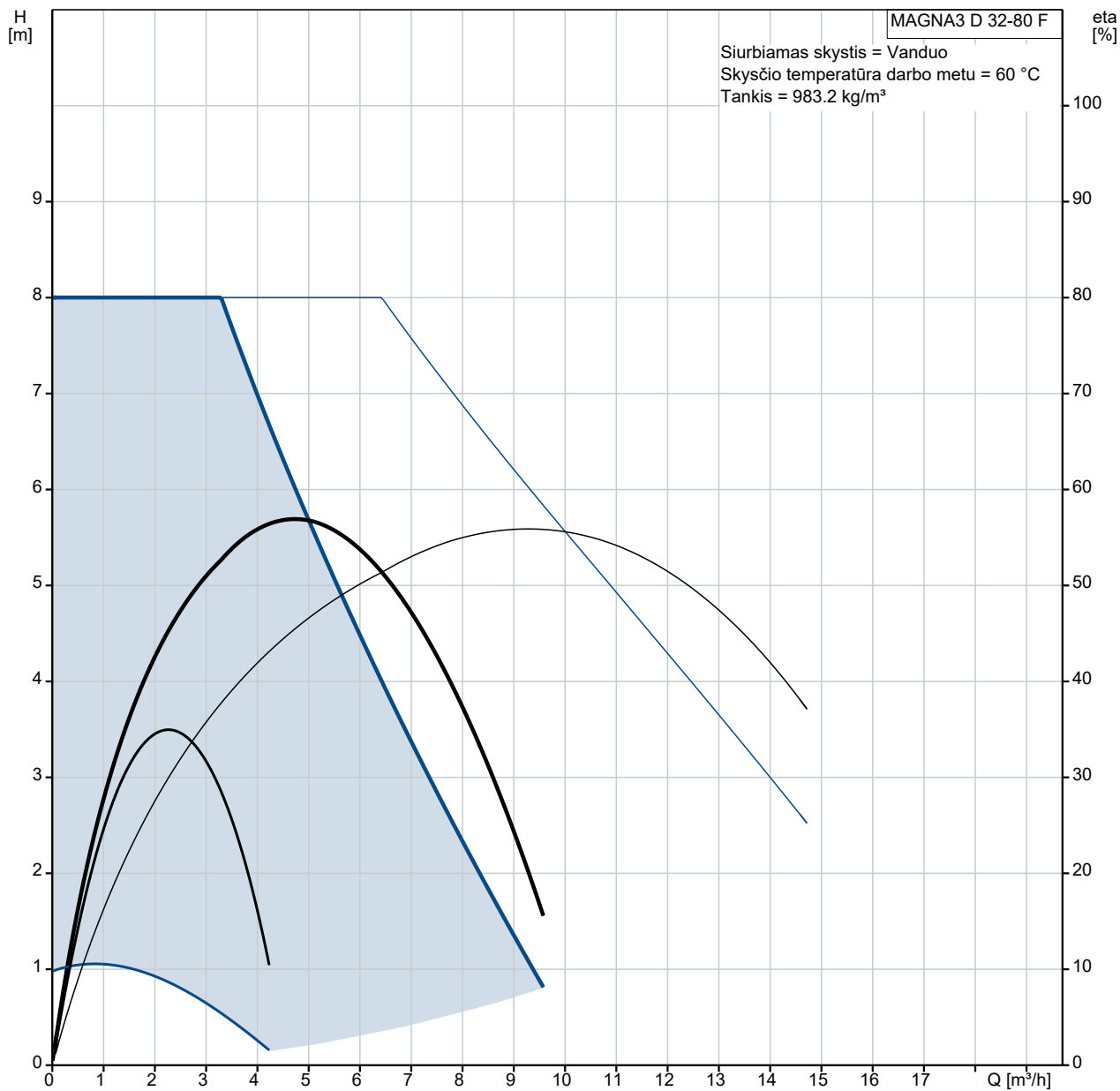


Kiekis	Aprašymas
--------	-----------

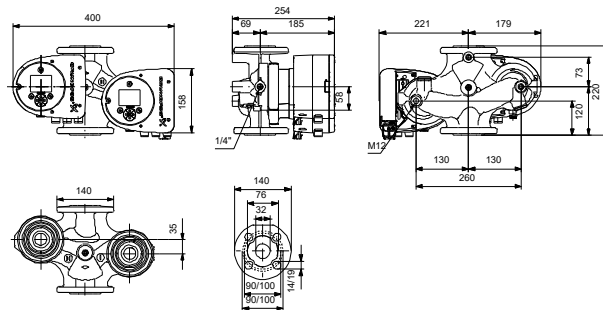
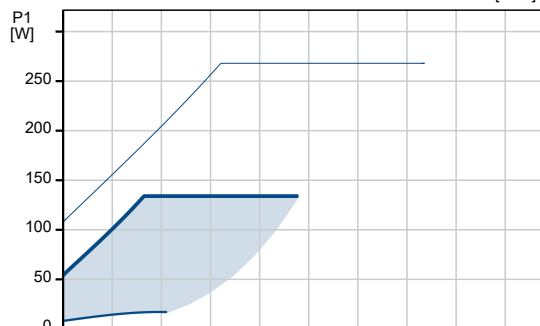
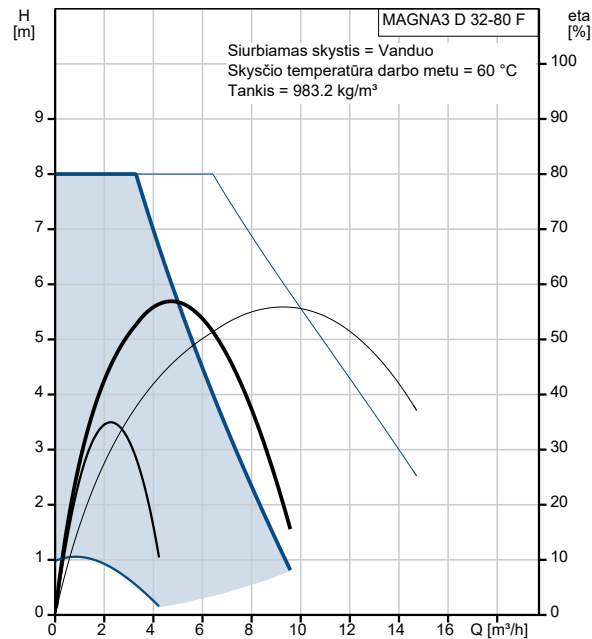
1	MAGNA3 D 32-80 F  <p>Atkreipkite dėmesį! Paveikslėlyje parodytas produktas gali skirtis nuo tikrojo</p> <p>Produkto Nr.: 98333880</p> <p>The Grundfos MAGNA3 D circulator pump is the ideal choice for almost any building project – old or new. With its unrivalled energy efficiency, all-encompassing range and built-in communication capabilities, MAGNA3 D is ideal for engineers and specifiers looking to create high-performance heating and cooling systems.</p> <p>The pump is maintenance-free due to the canned-rotor type design. This also means that pump and motor form an integral unit without shaft seal and with only two gaskets for sealing. The bearings are lubricated by the pumped liquid.</p> <p>MAGNA3 D offers three multipump modes: Alternating, backup and cascade operation.</p> <p>In alternating and backup operation, only one pump operates at a time, both ensuring constant comfort.</p> <p>In alternating operation, the change from one pump to the other depends on time or energy.</p> <p>If a pump fails, the other pump will take over automatically.</p> <p>In backup operation, the backup pump is operated at intervals to prevent seizing up.</p> <p>If the duty pump stops due to a fault, the backup pump will start automatically.</p> <p>In cascade operation, the pumps automatically switch on and off, adapting to the current consumption in the system.</p> <p>The two pumps communicate wirelessly.</p> <p>MAGNA3 D features an intuitive display and allows you to connect wirelessly with the Grundfos GO Remote app, giving you access to advanced reporting and monitoring.</p> <p>The pump includes fieldbus communication via CIM modules as well as analog and digital inputs and configurable relays.</p> <p>Control features include AUTOADAPT and FLOWADAPT. FLOWADAPT which reduces the need for throttling valves, thus cutting costs on system components.</p> <p>MAGNA3 D is the superior choice for a wide range of heating and cooling applications, including:</p> <ul style="list-style-type: none">• Mixing loops• Heating surfaces• Air conditioning surfaces• Ground-source heat pump systems• Smaller chiller applications. <p>MAGNA3 D is a single-phase pump and characterised by having the controller and display integrated in the control box. The pump also has a built-in differential-pressure and temperature sensor.</p> <p>The pump housing is available in both cast-iron and stainless-steel versions. The composite rotor can be carbon-fibre reinforced, the bearing plate and rotor cladding are made of stainless steel and the stator housing is made of aluminium. The power electronics are air-cooled.</p> <p>MAGNA3 incorporates a 4-pole synchronous, permanent-magnet motor (PM motor). This motor type is characterised by higher efficiency than a conventional asynchronous squirrel-cage motor. The pump speed is controlled by an integrated frequency converter.</p>
---	--



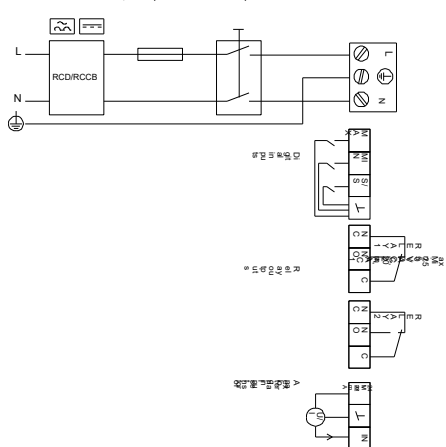
98333880 MAGNA3 D 32-80 F



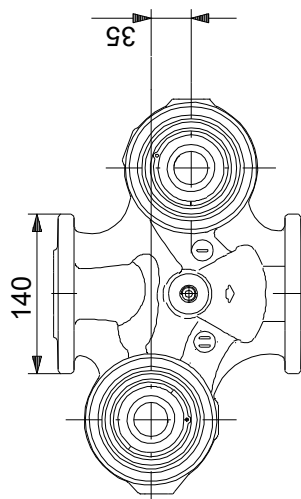
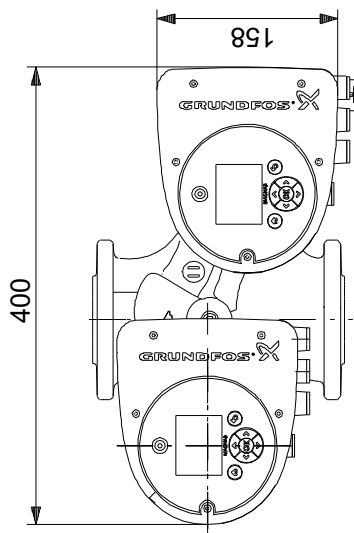
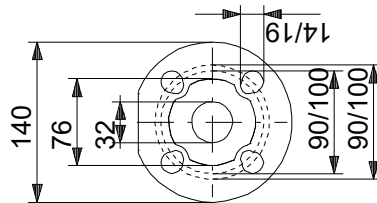
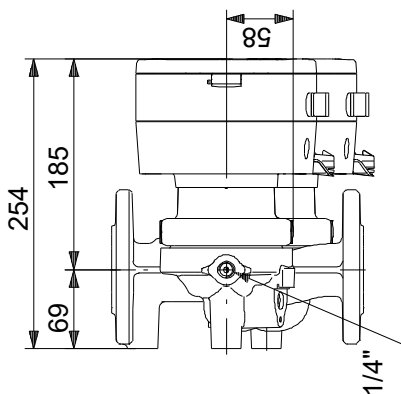
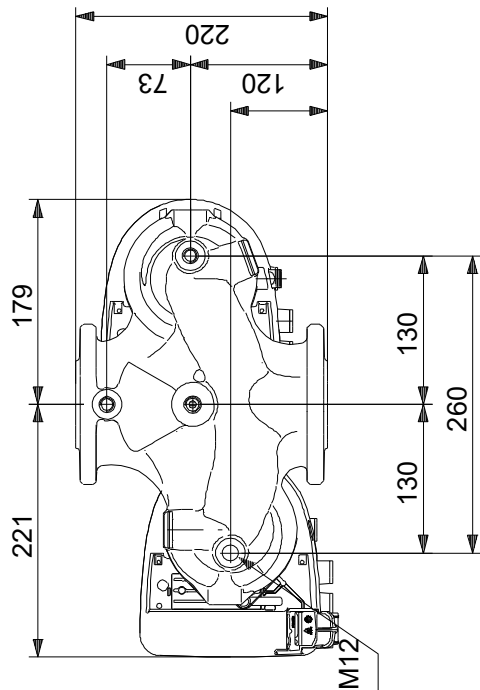
Aprašymas	Vertė
Bendra informacija:	
Produkto pavadinimas:	MAGNA3 D 32-80 F
Produkto Nr.:	98333880
EAN numeris:	5710629851246
Techniniai duomenys:	
Nominalus debitas:	4.77 m ³ /h
Nominalus slėgio aukštis:	5.966 m
Maks. slėgio aukštis:	80 dm
TF klasė:	110
Sertifikatai ant vardinės plokštelės:	CE, VDE, EAC, CN ROHS, WEEE
Modelis:	D
Medžiagos:	
Siurblio korpusas:	Ketus
Siurblio korpusas:	EN-GJL-250
Siurblio korpusas:	ASTM A48-250B
Darbaratis:	PES 30%GF
Įrengimas:	
Aplinkos temperatūros intervalas:	0 .. 40 °C
Maksimalus darbinis slėgis:	10 bar
Standartinis flanšas:	DIN
Vamzdžio jungtis:	DN 32
Slėgis:	PN 6/10
Montažinis ilgis:	220 mm
Skystis:	
Siurbiamas skystis:	Vanduo
Skysčio temperatūros diapazonas:	-10 .. 110 °C
Skysčio temperatūra eksploataavimo metu:	60 °C
Tankis:	983.2 kg/m ³
Elektrotechniniai duomenys:	
Naudojama galia P1:	9 .. 134 W
Elektros tinklo dažnis:	50 / 60 Hz
Nominali įtampa:	1 x 230 V
Maksimali vartojama srovė:	0.09 .. 1.19 A
Korpuso klasė (IEC 34-5):	X4D
Izoliacijos klasė (IEC 85):	F
Kita:	
Energija (EEI):	0.18
Neto masė:	15.2 kg
Bendra masė:	16.8 kg
Tiekimo tūris:	0.055 m ³
Norvegijos NRF Nr.:	9042348
Kilmės šalis:	DE
Muitinės kodas:	84137030



Example of mains-connected motor with mains switch, backup fuse and additional protection



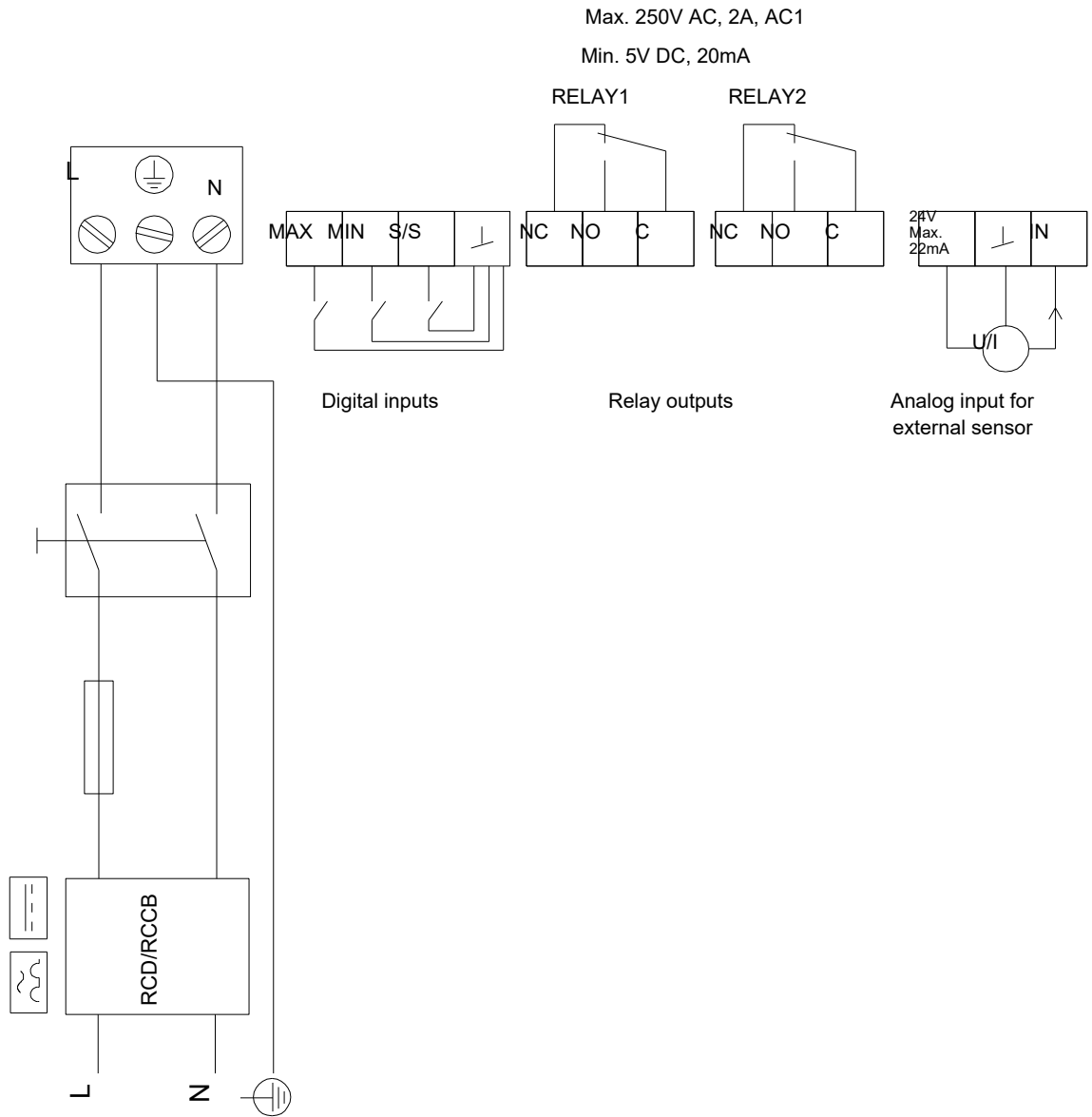
98333880 MAGNA3 D 32-80 F



Atkreipkite dėmesį! Visi matmenys, jei nenurodyta kitaip, pateikti milimetrais.
 Atsakomybės apribojimas: šiame supaprastintame matmenų brėžinyje neparodytos visos detalės.

98333880 MAGNA3 D 32-80 F

Example of mains-connected motor with mains switch, backup fuse and additional protection



Atkreipkite dėmesį! Visi matmenys, jei nenurodyta kitaip, pateikti milimetrais.