

Progressing cavity pumps and industrial grinders

www.sydexpump.com

PROGRESSING CAVITY PUMPS

Progressing cavity pump principle

The progressing cavity pump is a positive displacement pump with a constant flow rate. The rotation of the helical rotor transfers the fluid inside the double-helix stator, **without damaging the medium thanks to its peculiar design.**

Sydex pumps ensure very low shear operations and no pulsation: they are ideal for any task which requires a steady flow, whatever the values of viscosities and pressure.

FREE MOULDED FM range



FEATURES AND BENEFITS

- Compact
- Easy and quick maintenance
- Cost effective solution

PERFORMANCES

- Flow rate: up to 18 m³/h [up to 79 USGPM]
- Pressure: up to 4 bar [58 PSI]
- 8 models

METERING PUMP M range



FEATURES AND BENEFITS

- Versatile
- Accurate
- Compact
- Reliable
- Easy and quick maintenance

PERFORMANCES

- Flow rate: from 3 to 300 l/h [0.013 to 1.32 USGPM]
- Pressure: up to 72 bar [1044 PSI]
- 4 models

SLUDGE PUMP K range



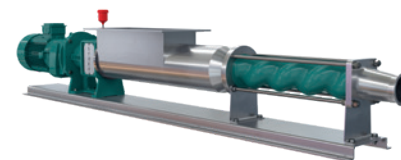
FEATURES AND BENEFITS

- Robust
- Compact
- Cost effective solution
- Easy and quick maintenance

PERFORMANCES

- Flow rate: from 0.1 m³/h up to 300 m³/h [0.44 to 1320 USGPM]
- Pressure: up to 48 bar [696 PSI]
- 60 models

HOPPER PUMP W range



FEATURES AND BENEFITS

- Robust
- Compact
- Ideal for high viscosity fluids
- Easy maintenance

PERFORMANCES

- Flow rate: from 0.1 m³/h up to 200 m³/h [0.44 to 880 USGPM]
- Pressure: up to 24 bar [348 PSI]
- 34 models

FEEDING SCREW PUMP G range



FEATURES AND BENEFITS

- Robust
- Ideal for dehydrated and high-density fluids
- Biogas applications
- Easy maintenance

PERFORMANCES

- Flow rate: up to 100 m³/h [440 USGPM]
- Pressure: up to 48 bar [696 PSI]
- 22 models

HYGIENIC PUMP H range



FEATURES AND BENEFITS

- Versatile
- Hygienic applications
- Ideal for sensitive food products
- Cost effective solution
- Easy and quick maintenance

PERFORMANCES

- Flow rate: up to 140 m³/h [616 USGPM]
- Pressure: up to 24 bar [348 PSI]
- 36 models

VERTICAL BARREL AND DRUM PUMP BE range



FEATURES AND BENEFITS

- Versatile
- High viscosity and shear sensitive fluids
- Barrel and drum emptying
- Cost effective solution
- Easy and quick maintenance

PERFORMANCES

- Flow rate: from 0.1 m³/h to 5 m³/h [0.44 to 22 USGPM]
- Pressure: up to 12 bar [174 PSI]
- 10 models

VERTICAL API 676 PUMP E range



FEATURES AND BENEFITS

- Ideal for Oil&Gas applications
- Robust
- High suction capacity (NPSHA)
- Small footprint

PERFORMANCES

- Flow rate: up to 140 m³/h [616 USGPM]
- Pressure: fino a 24 bar [348 PSI]
- 25 models

INDUSTRIAL GRINDER & MACERATOR

Eliminator range



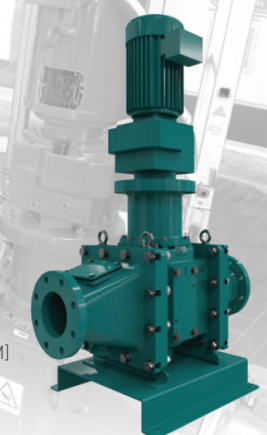
FEATURES AND BENEFITS

- Light weight and compact
- Versatile configuration
- Easy and quick maintenance
- Engineered for soft particles

PERFORMANCES

- Flow rate: up to 3.5 m³/h [15 USGPM]
- Pressure: up to 6 bar

Defender range



FEATURES AND BENEFITS

- Robust
- Low head loss
- Fast installation
- Easy and quick maintenance
- Cost effective solution
- Customized equipment

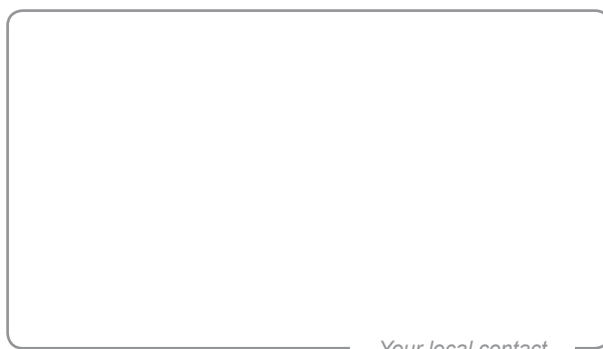
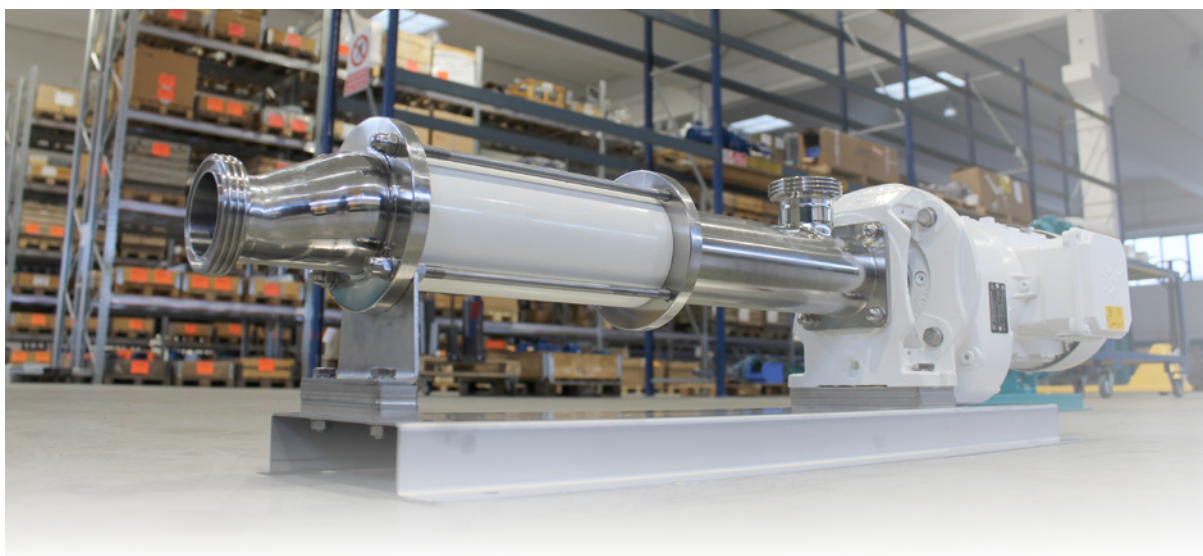
PERFORMANCES

- Flow rate: up to 200 m³/h [880 USGPM]
- 3 models

SYDEX - ABOUT US

Sydex is a dynamic, capable and well-established Italian company; Progressing Cavity Pumps are its core business.

Sydex strives to work with customers to find the best solution to their challenges in every kind of operating conditions: flow rate, pressure, viscosity and type of fluid. A wide range of products is available, engineered to guarantee high performances and maximum reliability. The customers and Sydex select together the right pumps, grinders and accessories in order to achieve all their objectives.



Your local contact

