

Kiekis | **Aprašymas**1 | **Hydro EN 32-200/219 YJS ADL-U3-A**

Atkreipkite dėmesį! Paveikslėlyje parodytas produktas gali skirtis nuo tikrojo

Produkto Nr.: [99844368](#)

Pressure booster pump sets are designed for automatic sprinkler systems, according to EN 12845, in addition to other relevant industry standards.

The pump sets are designed for fire extinguishing systems with clean water and for single, single superior and double or combined water supplies. It is a compact, robust and modular system supplied in pre-assembled macro blocks to make transport, handling and installation easy. Communication is guaranteed through ModBus module.

The main pumps have end-suction hydraulics. They are fitted with corrosion-resistant material and replaceable wearing parts, back pull-out design through spacer coupling, fitted with high grade mechanical seals and internally tested at the factory according to QCP protocols.

The drivers of the pumps deliver, in continuous operation, at least the power required at the flow corresponding to the NPSHr value equal to 16 m. The entire pump-engine assembly is factory-tested to meet the expected performance.

The hydraulic components are designed to minimize the pressure loss and the water speed to meet the requirements at the flow rate values stated on the performance curve.

The system contains the following components (unless otherwise specified):

- Two hydraulics coupled with driver
- Two microprocessor-based control panels
- One pressure-regulator pump and related independent control panel
- One modular discharge manifold
- Two concentric tapered adapters
- Two grooved joints
- Direct connection port for room sprinklers
- Two non-return valves
- Two isolating valves
- Two drain test valves
- Two pump starting assembly packs (two pressure switches, glycerin-filled pressure gauge, isolating valve, bypass line with non-return valve and a drain valve)
- Two pressure-sensing switches (pump running)
- Pressure vessel
- A set of Jockey pump fittings (connection for priming, non-return valve, two isolating valves and a pressure switch)
- Silencer
- A set of batteries
- Diesel fuel tank with leak containment.

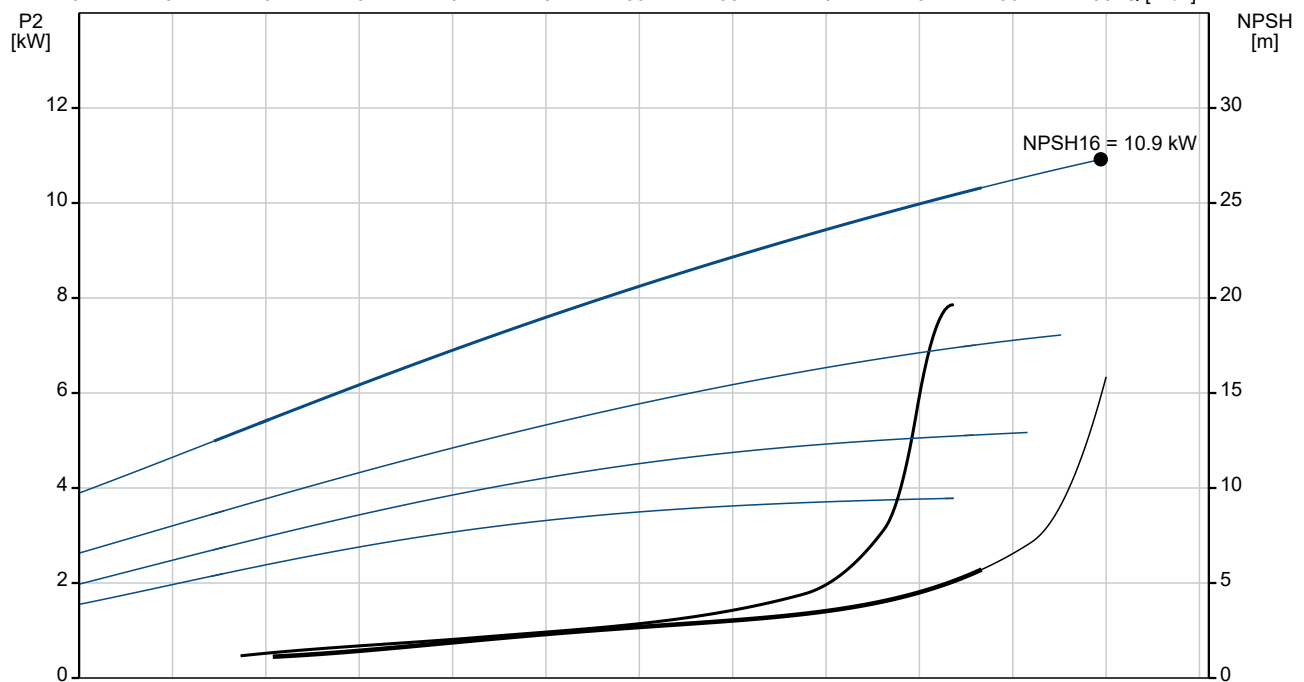
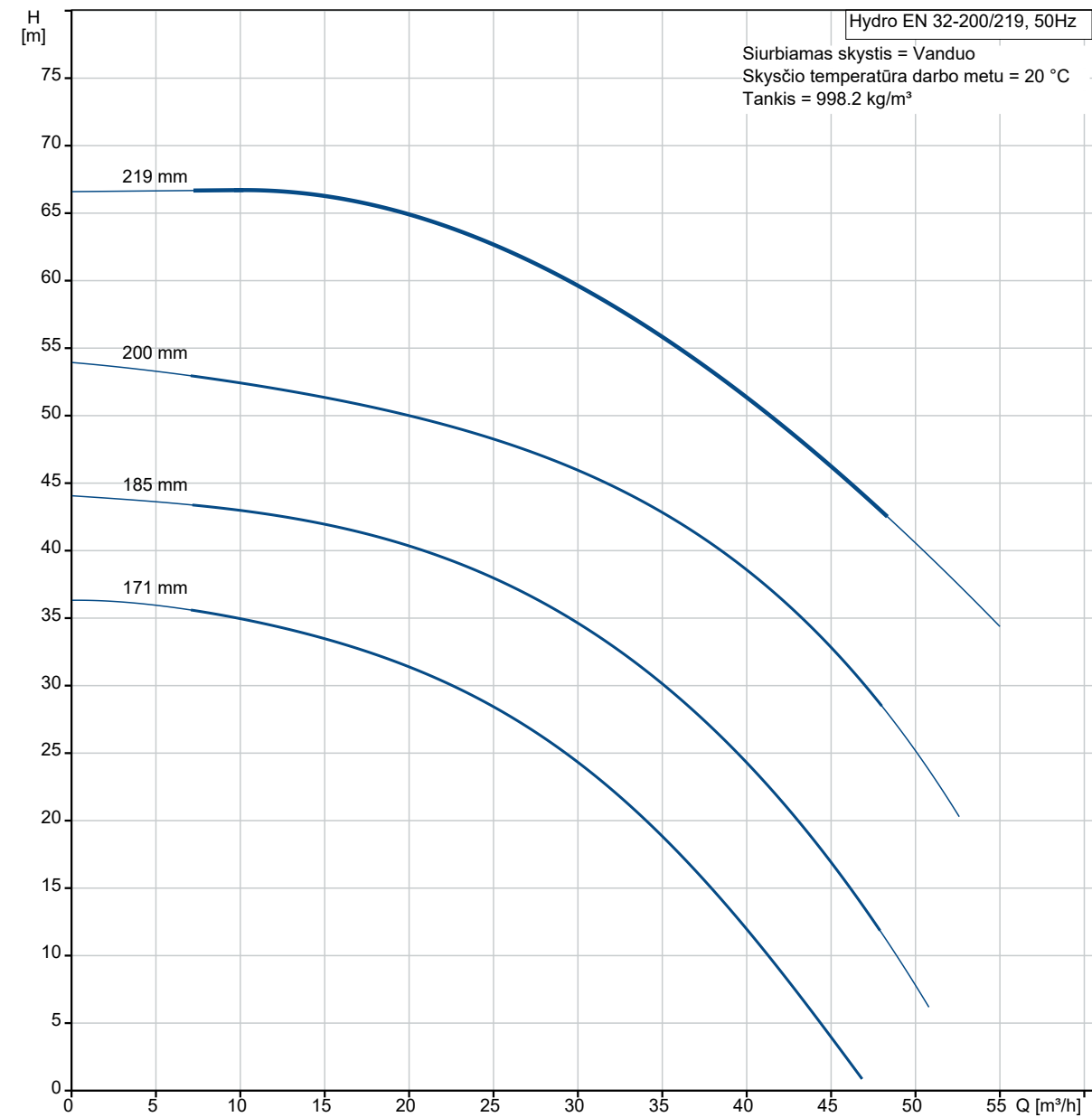
For more components, contact Grundfos.

The two main pumps are configured in a duty / stand-by configuration, whereas the electric driven pump is factory pre-set to be the duty one.

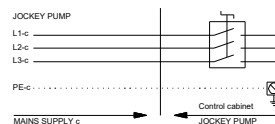
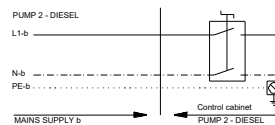
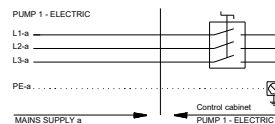
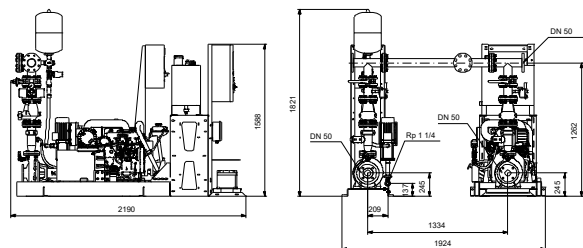
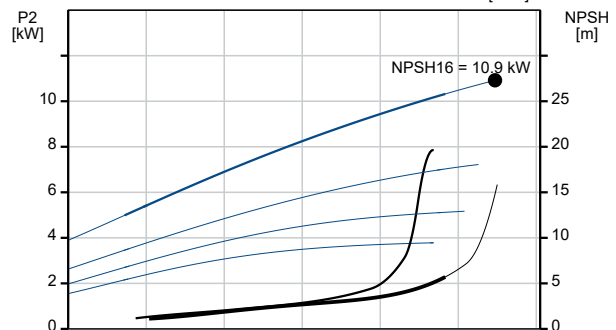
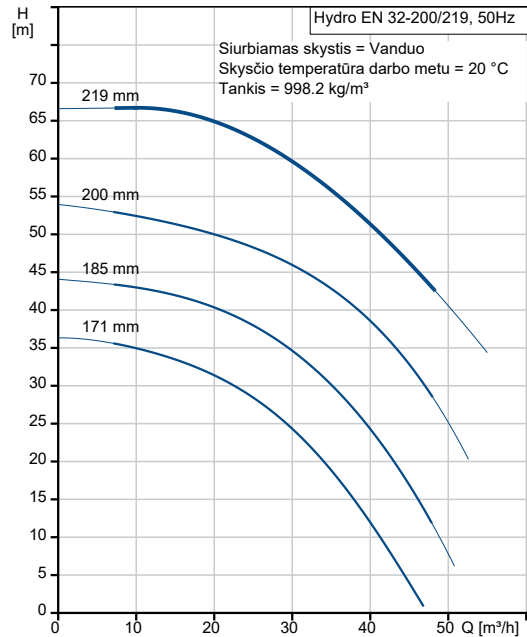
Each pumping unit is mounted on a separate baseplate to reduce stress from one unit to the other while assuring layout flexibility. It ensures easy access to narrow pump room entry and handling in case of extraordinary maintenance needs and keeps the system protected.

Kiekis	Aprašymas
	<p>All the items are wired and fitted at the factory within the same skid, except for the main control panels that are supplied loose and prewired for the diesel set, whilst loose for larger electric driven sets.</p> <p>Pump, driver, jockey pump and controllers are anchored on a robust electro-welded baseplate. They are painted RAL 3000 and designed to withstand all static and dynamic stress. The baseplates are designed with holes and anchoring lugs for an easy and safe handling and optimal fastening to the plinth or concrete foundation.</p> <p>For further product information, please tick off "Tender text" under "Print/PDF".</p>

99844368 Hydro EN 32-200/219 YJS ADL-U3-A 50 Hz

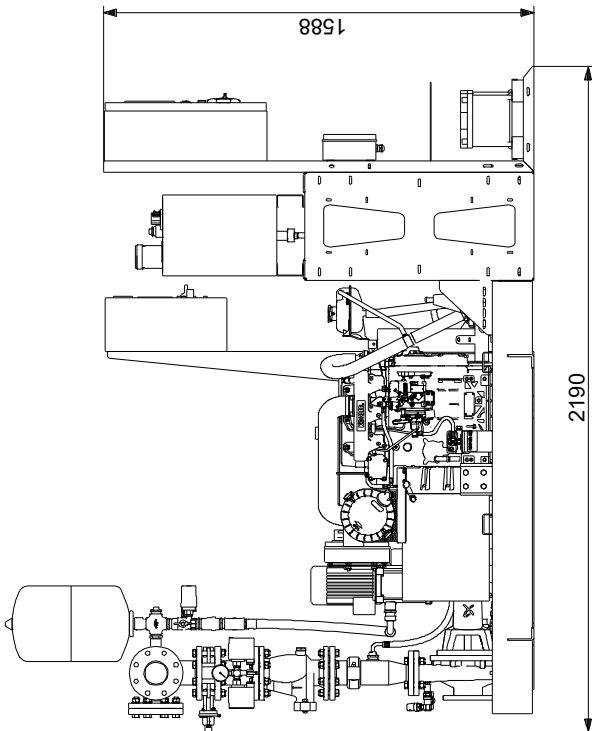
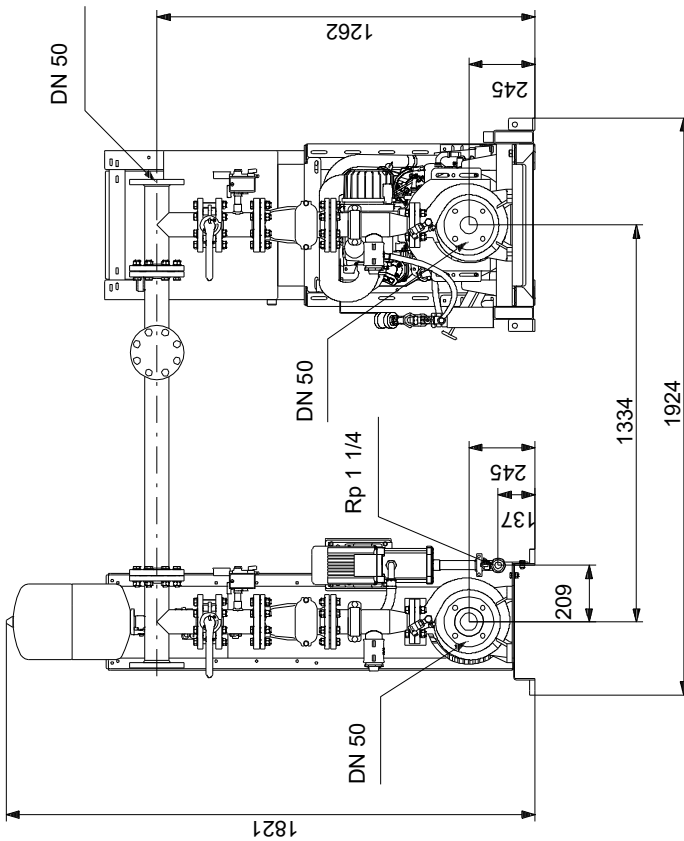


Aprašymas	Vertė
Bendra informacija:	
Produkto pavadinimas:	Hydro EN 32-200/219 YJS ADL-U3-A
Produkto Nr.:	99844368
EAN numeris:	5713835088246
Techniniai duomenys:	
Nominalus debitas:	46.5 m ³ /h
Nominalus slėgio aukštis:	44.5 m
Electric cooling flow:	0.5 m ³ /h
Diesel cooling flow:	0.5 m ³ /h
Nominalus darbarčio skersmuo:	200 mm
Sertifikatai:	CE
Priešgaisrinis standartas:	EN 12845
Maks. išmetamųjų dujų priešslėgis [kPa]:	8.80 kPa
Siurblių skaičius:	3
Main pump type:	NKF 32-200/219
Number of electrical driven pumps:	1
Number of diesel driven pumps:	1
Jockey pump type:	CM 3-10
Number of Jockey pumps:	1
Medžiagos:	
Siurblio korpusas:	Ketus
Siurblio korpusas:	EN-GJL-250
Darbaratis:	Bronza
Manifold:	Galvanized steel
Įrengimas:	
Aplinkos temperatūros intervalas:	10 .. 40 °C
Relative humidity:	50 %
Maksimalus darbinis slėgis:	16 bar
Įvado jungties tipas:	DIN
Išvado jungties tipas:	DIN
Įvado jungties dydis:	DN 50
Išvado jungties dydis:	DN 50
Type of inlet connection for Jockey pump:	Rp
Size of inlet connection for Jockey pump:	1 1/4 inch
Įžeminimas:	PE
Elevation above sea level:	300 m
Skystis:	
Siurbiamas skystis:	Vanduo
Skysčio temperatūros diapazonas:	0 .. 40 °C
Skysčio temperatūra eksploataavimo metu:	20 °C
Tankis:	998.2 kg/m ³
Elektrotechniniai duomenys:	
Variklio standartas:	IEC
Pavaros tipas:	Electric Motor / Diesel engine
Mains supply for electrical motor:	3 x 400 V
Nominali galia - P2:	11 kW
Elektros tinklo dažnis:	50 Hz
Nominali įtampa:	x 380/415 V
Rated current:	20 A
Paleidimo srovė:	760 %
Motor nominal speed (w/o slip):	2957 rpm
Polių skaičius:	2
Method of start:	Direct-on-line (DOL)
Korpuso klasė (IEC 34-5):	IP54
Motor standard for Jockey pump:	IEC
Mains supply for jockey motor:	3 x 400 V
Rated power - P2 for Jockey pump:	1.5 kW
Rated current for Jockey pump:	3.3 A



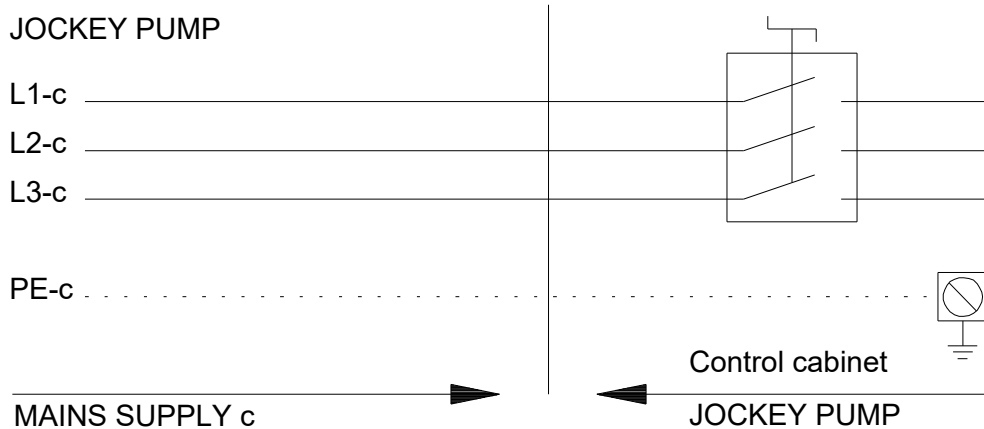
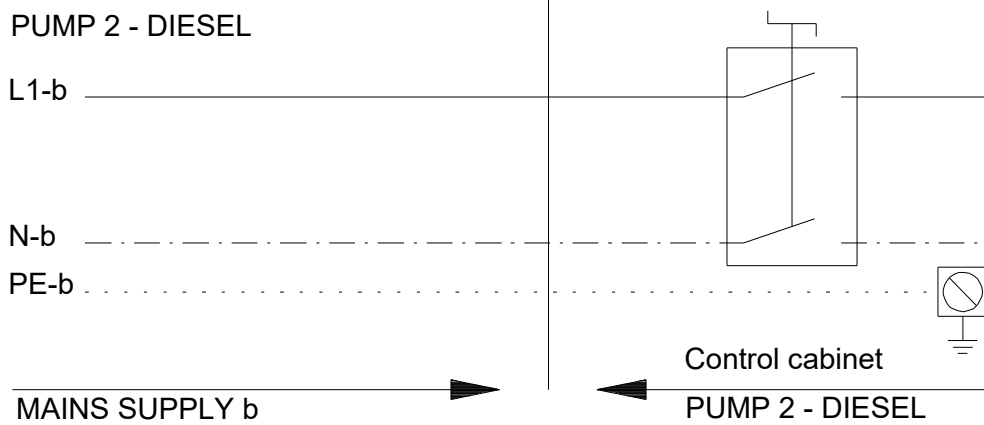
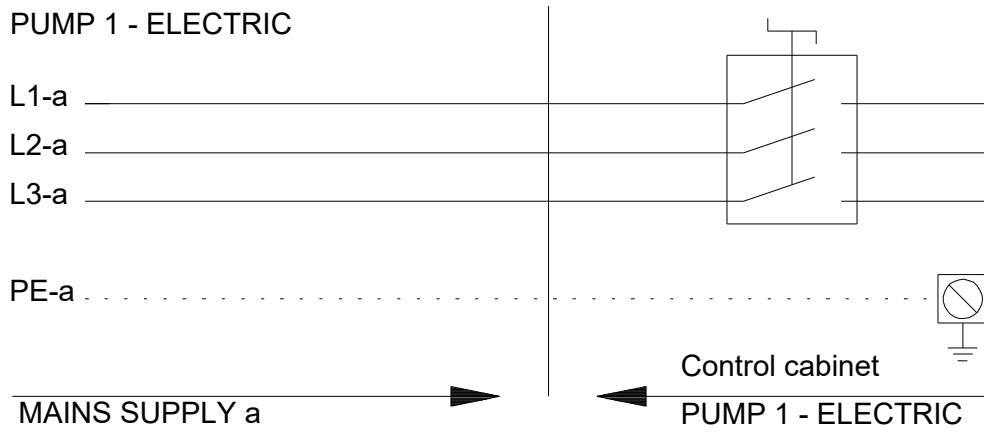
Aprašymas	Vertė
Number of poles for Jockey pump:	2
Method of start for Jockey pump:	Direct-on-line (DOL)
Variklio duomenys:	
Mains supply for diesel motor:	1 x 230 V
Bendra variklio galia [kW]:	14.8 kW
Engine continuous power NA:	13.5 kW
Akumuliatoriaus įtampa:	12 V
Variklio aušinimo tipas:	Air cooled
Cooling air flow:	13200 l/min
Exhaust flow:	183 m ³ /h
Variklio oro padavimas:	Natural aspirated
Heat radiation:	11600 kcal/h
Maks. išmetamųjų dujų priešslėgis [kPa]:	8.80 kPa
Maximum exhaust temperature:	530 °C
Kita:	
Neto masė:	761 kg
Bruto masė:	875 kg
Kilmės šalis:	IT
Muitinės kodas:	84137059

99844368 Hydro EN 32-200/219 YJS ADL-U3-A 50 Hz



Atkreipkite dėmesį! Visi matmenys, jei nenurodyta kitaip, pateikti milimetrais.
Atsakomybės apribojimas: šiame supaprastintame matmenų brėžinyje neparodytos visos detalės.

99844368 Hydro EN 32-200/219 YJS ADL-U3-A 50 Hz



Atkreipkite dėmesį! Visi matmenys, jei nenurodyta kitaip, pateikti milimetrais.