

Kiekis **Aprašymas**1 **Hydro EN 32-200/171 S2JS ADL-U1****Atkreipkite dėmesį! Paveikslėlyje parodytas produktas gali skirtis nuo tikrojo**Produkto Nr.: [99843932](#)

Pressure booster pump sets are designed for automatic sprinkler systems, according to EN 12845, in addition to other relevant industry standards.

The pumps sets are designed for fire extinguishing systems with clean water and for single or combined water supplies. It is compact, robust and modular system supplied in pre-assembled macro blocks to make transport, handling and installation easy. Communication is guaranteed through ModBus module.

The main pumps have end-suction hydraulics. They are fitted with corrosion-resistant material and replaceable wearing parts, back pull-out design through spacer coupling, fitted with high grade mechanical seals and internally tested at the factory according to QCP protocols.

The main pumps are equipped with IEC squirrel cage IE3 electric motors that deliver, in continuous operation, at least the power required at the flow corresponding to the NPSHr value equal to 16 m.

The hydraulic components are designed to minimize the pressure loss and the water speed to meet the requirements at the flow rate values stated on the performance curve.

The system contains the following components (unless otherwise specified):

- Two hydraulics coupled with drivers
- Two microprocessor-based control panels
- One pressure maintenance pump and related independent control panel
- One modular discharge manifold
- Two concentric tapered adapters
- Two grooved joints
- Direct connection port for room sprinkler
- Two non-return valves
- Two isolating valves
- Two drain test valves
- Two pump starting assembly pack (two pressure switches, glycerin-filled pressure gauge, isolating valve, bypass line with non-return valve and drain valve)

- Two pressure sensing switches (pump running)
- Pressure vessel
- A set of Jockey pump fittings (connection for priming, non-return valve, two isolating valves and a pressure switch).

For more components, contact Grundfos.

The two main pumps are configured in a duty / stand-by configuration.

Each pumping unit is mounted on a separate baseplate to reduce stress from one unit to the other while assuring layout flexibility. This layout ensures easy access to the narrow pump room entry and handling in case of extraordinary maintenance needs and keeps the system protected.

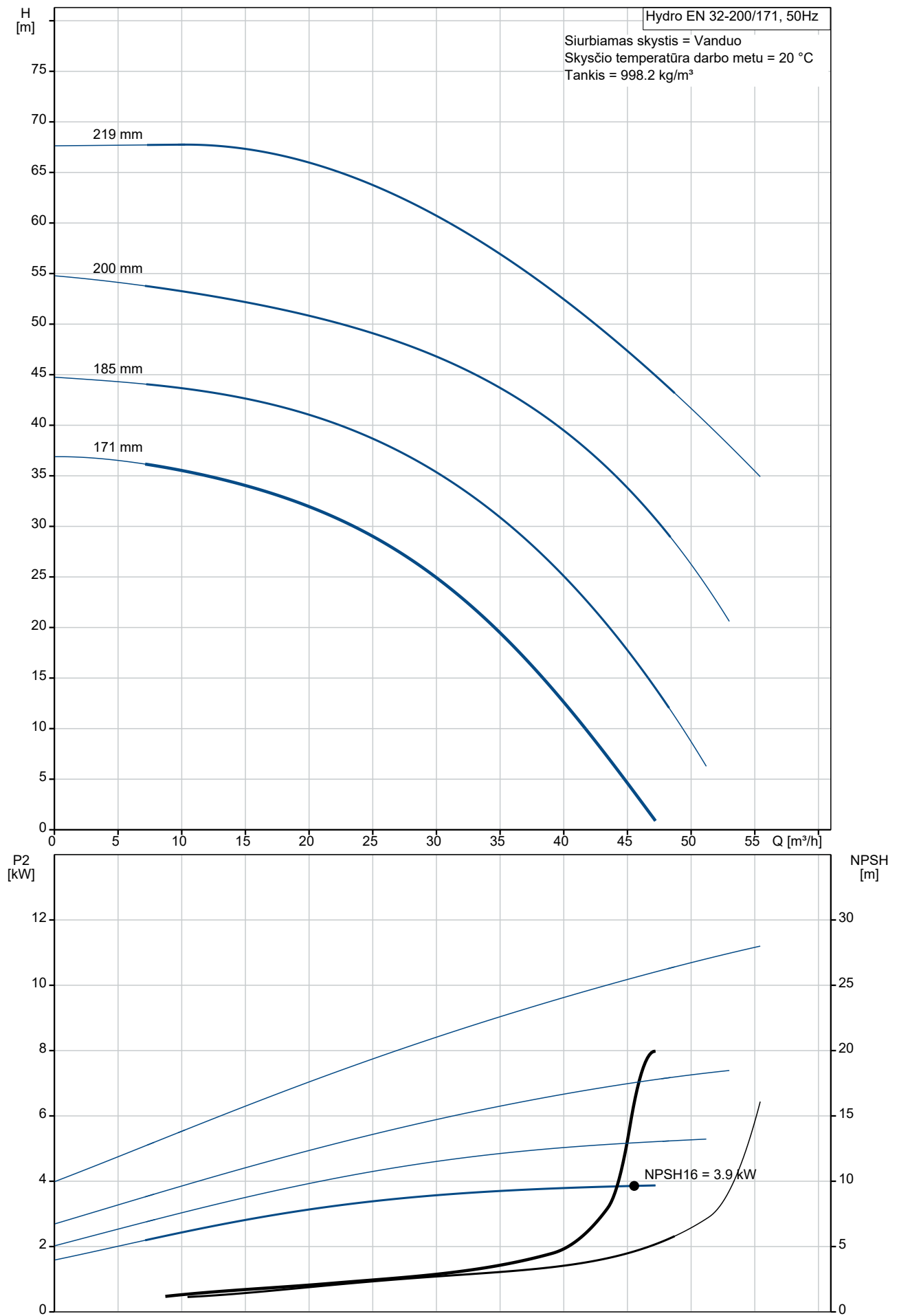
All the items are wired and fitted at the factory within the same unit skid, except for larger main control panels that are supplied loose with proper signals and cable entry tags.

Pump, driver, jockey pump and controllers (unless large size) are anchored on a robust electro-welded baseplate.

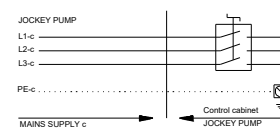
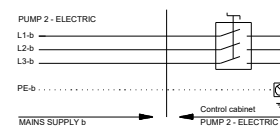
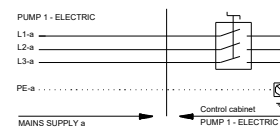
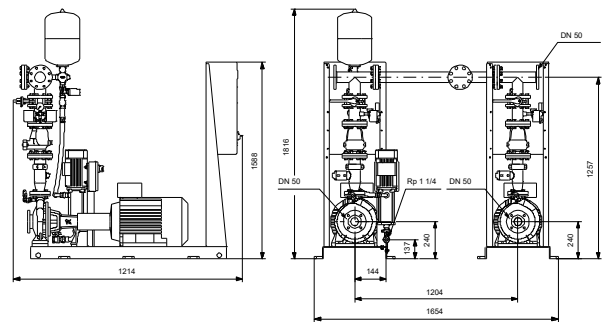
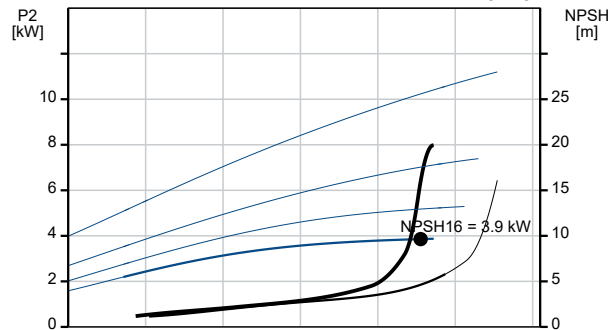
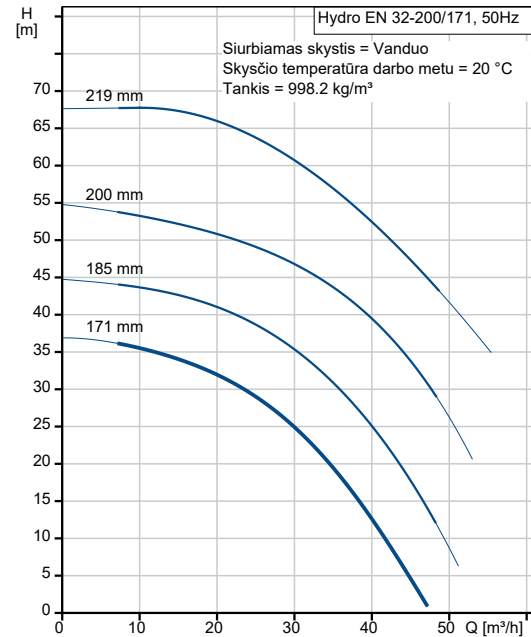
They are painted RAL 3000 and designed to withstand all static and dynamic stress.

Kiekis	Aprašymas
	<p>The baseplates are designed with holes and anchoring lugs for an easy and safe handling ensuring optimal fastening to the plinth or concrete foundation.</p> <p>For further product information, please tick off "Tender text" under "Print/PDF".</p>

99843932 Hydro EN 32-200/171 S2JS ADL-U1 50 Hz



Aprašymas	Vertė
Bendra informacija:	
Produkto pavadinimas:	Hydro EN 32-200/171 S2JS ADL-U1
Produkto Nr.:	99843932
EAN numeris:	5713835083807
Techniniai duomenys:	
Nominalus debitas:	44 m ³ /h
Nominalus slėgio aukštis:	6 m
Electric cooling flow:	0.5 m ³ /h
Nominalus darbaracio skersmuo:	200 mm
Sertifikatai:	CE
Priešgaisrinis standartas:	EN 12845
Siurblių skaičius:	3
Main pump type:	NKF 32-200/171
Number of electrical driven pumps:	2
Jockey pump type:	CM 3-7
Number of Jockey pumps:	1
Medžiagos:	
Siurblio korpusas:	Ketus
Siurblio korpusas:	EN-GJL-250
Darbaratis:	Bronza
Manifold:	Galvanized steel
Įrengimas:	
Aplinkos temperatūros intervalas:	5 .. 40 °C
Relative humidity:	50 %
Maksimalus darbinis slėgis:	16 bar
Įvado jungties tipas:	DIN
Išvado jungties tipas:	DIN
Įvado jungties dydis:	DN 50
Išvado jungties dydis:	DN 50
Type of inlet connection for Jockey pump:	Rp
Size of inlet connection for Jockey pump:	1 1/4 inch
Įžeminimas:	PE
Elevation above sea level:	1000 m
Skystis:	
Siurbiamas skystis:	Vanduo
Skystio temperatūros diapazonas:	0 .. 40 °C
Skystio temperatūra eksploataavimo metu:	20 °C
Tankis:	998.2 kg/m ³
Elektrotechniniai duomenys:	
Variklio standartas:	IEC
Pavaros tipas:	Elektros variklis
Mains supply for electrical motor:	3 x 400 V
Nominali galia - P2:	4 kW
Elektros tinklo dažnis:	50 Hz
Rated current:	7.4 A
Paleidimo srovė:	800 %
Motor nominal speed (w/o slip):	2980 rpm
Polių skaičius:	2
Method of start:	Direct-on-line (DOL)
Korpuso klasė (IEC 34-5):	IP54
Motor standard for Jockey pump:	IEC
Mains supply for jockey motor:	3 x 400 V
Rated power - P2 for Jockey pump:	1.1 kW
Rated current for Jockey pump:	2.72 A
Number of poles for Jockey pump:	2
Method of start for Jockey pump:	Direct-on-line (DOL)
Kita:	
Neto masė:	578 kg
Bruto masė:	665 kg
Kilmės šalis:	IT

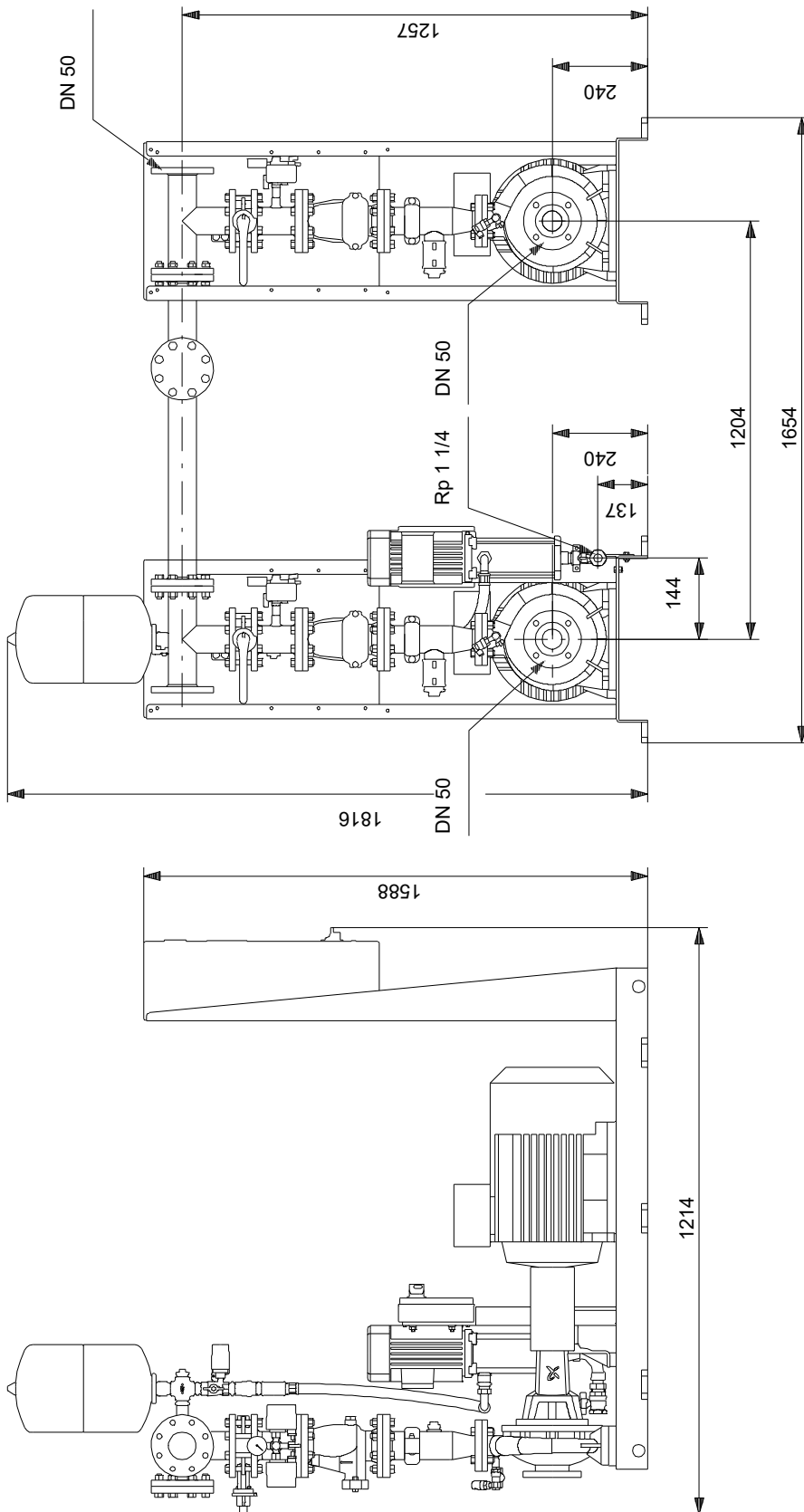


Aprašymas**Vertė**

Muitinės kodas:

84137059

99843932 Hydro EN 32-200/171 S2JS ADL-U1 50 Hz



Atkreipkite dėmesį! Visi matmenys, jei nenurodyta kitaip, pateikti milimetrais.
Atsakomybės apribojimas: šiame supaprastintame matmenų brėžinyje neparodytos visos detalės.

99843932 Hydro EN 32-200/171 S2JS ADL-U1 50 Hz

PUMP 1 - ELECTRIC

L1-a

L2-a

L3-a

PE-a

MAINS SUPPLY a

Control cabinet

PUMP 1 - ELECTRIC

PUMP 2 - ELECTRIC

L1-b

L2-b

L3-b

PE-b

MAINS SUPPLY b

Control cabinet

PUMP 2 - ELECTRIC

JOCKEY PUMP

L1-c

L2-c

L3-c

PE-c

MAINS SUPPLY c

Control cabinet

JOCKEY PUMP

Atkreipkite dėmesį! Visi matmenys, jei nenurodyta kitaip, pateikti milimetrais.