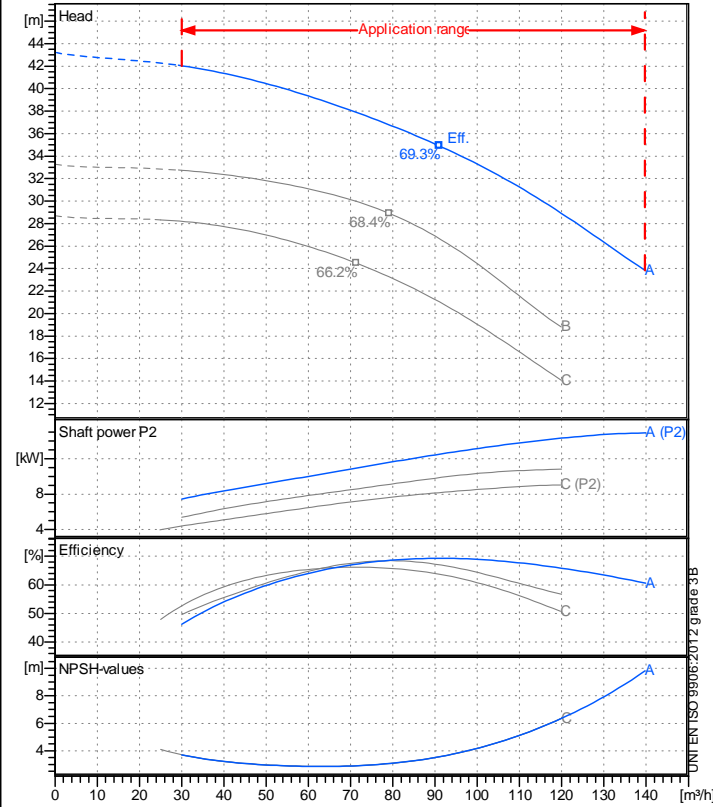


Receiver

From

Company name
Respons. Department
Person in charge
Phone number
Fax no
E-mail address



Operating data specification

Nominal flow	m ³ /h 0
Nominal head	m 0
Static head	m 0
NPSH - v value of plant	m 0
Inlet pressure	bar 0.09793
Fluid	Water, pure
Operating temperature t A	°C 20
Density at t A	kg/dm ³ 0.9983
Kin. viscosity at t A	mm ² /s 1.005

Pump

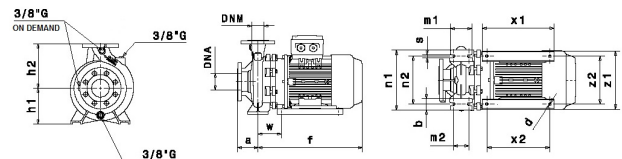
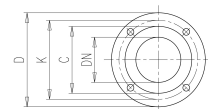
Pump name	IR4P-65-315A		
Size	80/65/315		
MEI (Reg. 547/2002 EU) >	0,5		
Speed 1/min	1450	No of stages	1
Impeller type			
Flow	Nominal	m ³ /h	
	Max-	m ³ /h	140
	Min-	m ³ /h	30
Head	Nominal	m	
	Max-	m	42
	Min-	m	23.8
Head H(Q=0)	m 43.2		
NPSH 3%	m		
Max. working pressure	bar 4.23		
Shaft power	kW		
Efficiency	%		
Max absorbed power	kW 14.912		

Materials Pump

Shaft	Stainless steel AISI 431 (1.4057)		
Impeller	Cast iron EN-GJL-250		
Pump body	Cast iron EN-GJL-250		
Seal disc	Cast iron EN-GJL-250		
Gasket	Natural fiber		
Mechanical seal	BVEG (Grafite/Ossido Allumina/EPDM)		

Dimensions in mm

a	125	z1	320	DNM	DNA		
b	80	z2	254	C	122	C	138
d	14			D	185	D	204
f	750			DN	65	DN	80
h1	225			K	145	K	160
h2	280			n°	4 x 19 mm		8 x 19 mm
m1	160						
m2	120						
n1	400						
n2	320						
s	18						
w	218						
x1	410						
x2	370						



Motor	Manufacturer / Type	SAER	160-20
Efficiency	IEC 60034-30	IE3	
Rated power	kW 15	Efficiency 4/4	92.1 %
Number of poles	4	Frame size	160
Electric current	A 32.2 A	Speed	1/min 1475
Electric voltage	V 400 V	3~	Hz 50
Starting mode	Unknown		
Degree of protection	IP 55	Insulation class	F

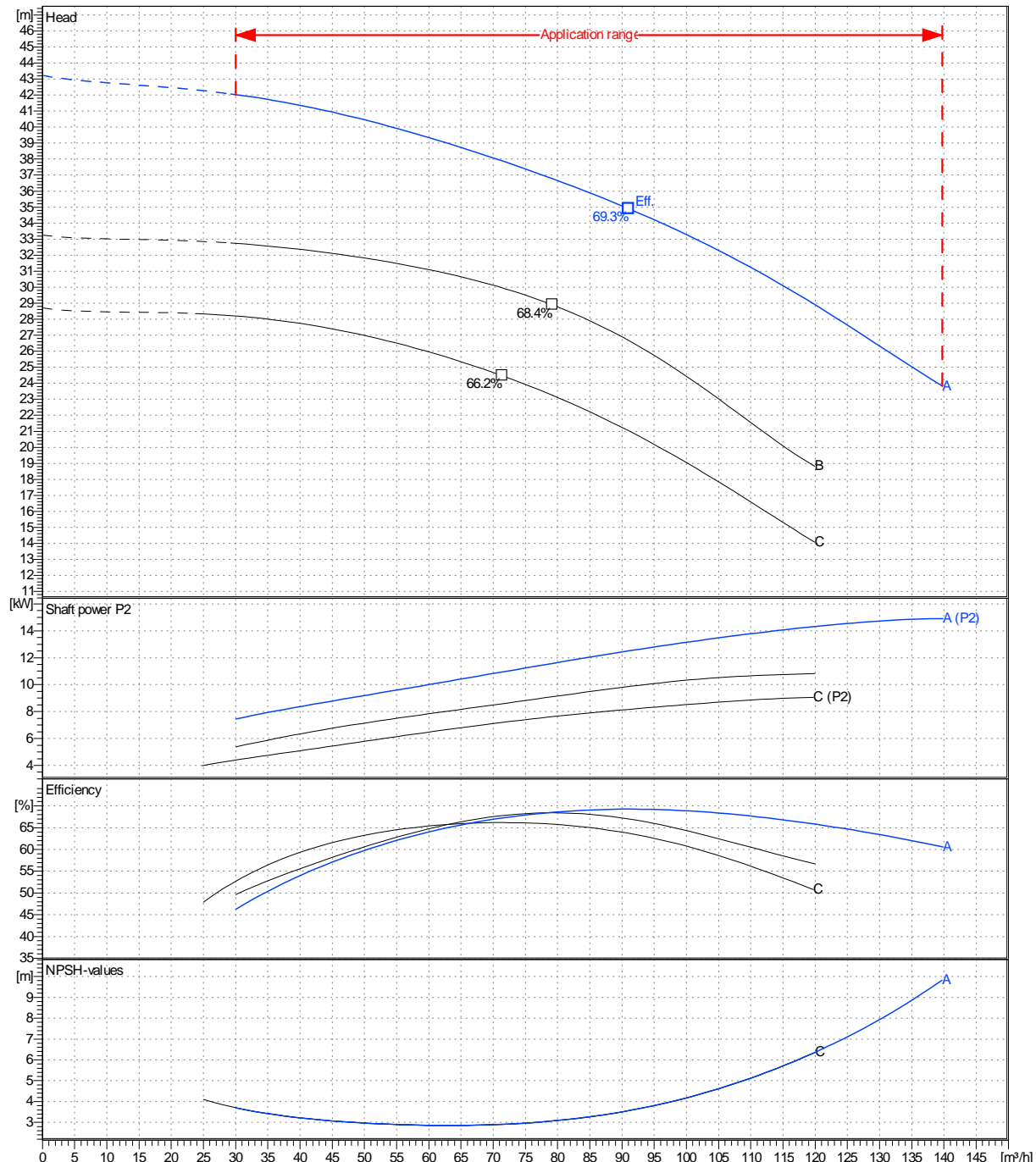
Remarks:

Project	Project ID	Created by	Created on	Last update
			2022-03-09	

Company name
 Respons. Department
 Person in charge
 Phone number
 Fax no
 E-mail address

Operating area	Flow	Head	Impeller type
Operating data specification	0 m ³ /h	0 m	Impeller construction Closed
Pump data	m ³ /h	m	Sense of rotation Clockwise from the drive end
			Outlet width DN65
	Flow	Head	Shaft power P2
	Min. Max. η Max.	H(Q=0) η Max.	P2(Q=0) Max. η Max.
	m ³ /h m ³ /h m ³ /h	m m	kW kW kW
	30 140 91	43.2 34.9	14.9 12.5
			Speed 1/min 1450
			Frequency Hz 50 Hz

Performance data based to: Water, pure [100%]; 20°C; 0.998kg/dm³; 1mm²/s UNI EN ISO 9906:2012 - Grade 3B



Project	Project ID	Created by	Created on 2022-03-09	Last update
---------	------------	------------	---------------------------------	-------------

Revision no

Pump dimensions

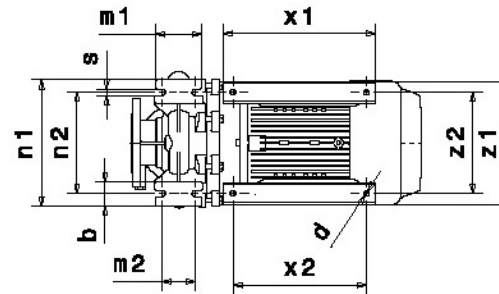
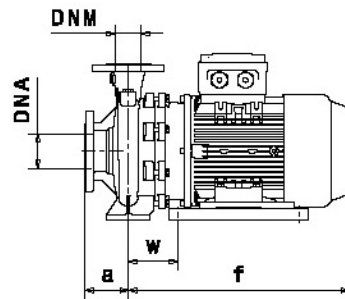
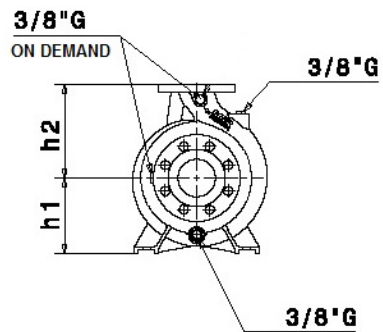
Connections

Suction side DN80 PN10 / PN16	Discharge port DN65 PN10 / PN16
-------------------------------------	---------------------------------------

Dimensions in mm

a	125		
b	80		
d	14		
f	750		
h1	225		
h2	280		
m1	160		
m2	120		
n1	400		
n2	320		
s	18		
w	218		
x1	410		
x2	370		
z1	320		
z2	254		

Disegni dimensionali e immagini non vincolanti. Saer si riserva il diritto di effettuare cambiamenti senza alcun preavviso.
Dimensional drawing and picture are not binding. Saer reserves the right to make changes without prior notice.



Project

Project ID

Created by

Created on
2022-03-09

Last update