

POWER



PACKS



POWER PACKS

SCORPION

19 L/min @ 95 Bar - (12 L/min @ 160 Bar) Gasoline engine 6 Hp



- *Stainless steel frame*
- *All parts suspended on anti-vibration shock mounts*
- *Quick couplers installed on impact free swivel fitting*
- *High efficiency oil cooling system with centrifugal fan*
- *Central lifting hook*



SCORPION micro power pack with 6 Hp gasoline engine – recoil start is designed to guarantee the minimum weight and easy transportability. The machine is available in two configurations of hydraulic power: 20 L/min @ 95 Bar or 12 L/min @ 160 Bar. Agile and robust **SCORPION** is ideal in the utilities maintenance , in general applications with hydraulic tools and in all works where are needed power and transportability.

Available with different hydraulic power depending on request.

| TECHNICAL CHARACTERISTICS | SCORPION |
|---------------------------|----------------------------------|
| Weight (kg) | 42 |
| Dimension LxWxH (cm) | 60x40x43 |
| Flow L/min | 20@95 Bar (12@ 160 Bar) |
| Pressure Bar | 95-160 |
| Engine | Briggs & Stratton 6hp - gasoline |
| Starter | recoil |
| Acceleration | manual |
| Hoses Length std | 7 mt |



GASOLINE

ASPID

20 L/min @ 140 Bar Engine 9 Hp - Recoil starter

- *Stainless steel frame*

- *All parts suspended on anti-vibration shock mounts*

- *Quick couplers installed on impact free swivel fitting*

- *High efficiency oil cooling system with centrifugal fan*

- *Central lifting hook*

SUPER ASPID

30 L/min @ 140 Bar Engine 13 Hp - Recoil starter

ASPID B

30 L/min @ 140 Bar Engine 14 Hp - Recoil and electric starter



ASPID is a three models power packs range with gasoline engine that have same size and minimal difference in weight due to the various engines installed and to the hydraulic output power. These machines have excellent transportability, robustness, quietness, reliability and a superior construction quality that guarantees the best performance in the more damaging applications. For these characteristics the **ASPID** range is the best selling and the more commonly power packs used in the maintenance of underground pipes, in rescue civil protection and in all application where is necessary a professional hydraulic power supply.

Available with different hydraulic power depending on request.

| TECHNICAL CHARACTERISTICS | ASPID | SUPER ASPID | SUPER ASPID B |
|---------------------------|----------------------------------|------------------------|-----------------------------------|
| Weight (kg) | 65 | 67 | 70 |
| Dimension LxWxH (cm) | 70x50x57 | 70x50x57 | 70x50x57 |
| Flow L/min | 20@140 Bar | 30@140 Bar | 30@140 Bar |
| Pressure Bar | 140/210 | 140/210 | 140/210 |
| Engine | Briggs & Stratton 9hp - gasoline | Honda 13 hp - gasoline | Briggs & Stratton 14hp - gasoline |
| Starter | recoil | recoil | recoil and electric |
| Acceleration | automatic | automatic | automatic |
| Hoses Length std | 7 mt | 7 mt | 7 mt |

POWER PACKS

MANTA

30 L/min @ 140 Bar - 2,2 Kva 115 - 230 Volt Engine 14hp - Recoil and electric starter

HYDRAULIC POWER PACK WITH GENERATOR

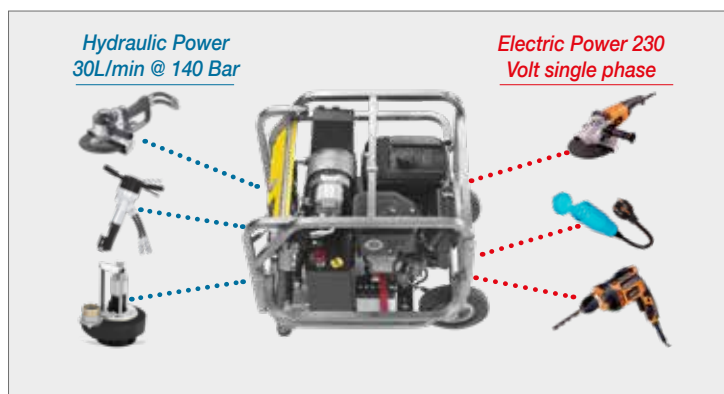


The double function makes **MANTA** the most versatile machine of its kind and adapts it to any situation being able to operate with most of the hydraulic and electrical tools. The hydraulic or electric functioning is selectable immediately by using a lever. Power sources can be used one at a time (not together). The efficient cooling system of the oil assures maximum performance even in hotter climates.

MANTA is for its construction and function the best machine in its kind. Its use is ideal for the maintenance of urban networks, for the civil protection and for all applications where are needed hydraulic and electric power

MANTA is the only hydraulic power pack on the market with electric generator 2.2 kva - 230 v

| TECHNICAL CHARACTERISTICS | MANTA |
|---------------------------|-----------------------------------|
| Weight (kg) | 95 |
| Dimension LxWxH (cm) | 85x60x65 |
| Flow L/min | 30@140 Bar |
| Pressure Bar | 140 Kva |
| Generator | 2.2 kW - 230V |
| Engine | Briggs & Stratton 14Hp - gasoline |
| Starter | recoil - electric |
| Acceleration | manual |
| Hoses Length std | 7 mt |



GASOLINE

SUPER RAPTOR single

38 L/min @ 140 Bar - Gasoline engine 18 Hp - Recoil and electric starter

- *Stainless steel frame with large folding handles*
- *Central lifting hook*
- *All parts suspended on anti-vibration shock mounts*
- *Quick couplers installed on impact free swivel fitting*
- *High efficiency oil cooling system with double radiator*
- *Central lifting hook*



SUPER RAPTOR is an hydraulic power pack with 18 Hp twin cylinder gasoline engine, the machine is available on request with different flows (example 30 l/min at 180Bar with 9 cc hydraulic pump or 38l/min at 140Bar with 11 cc hydraulic pump) depending on the pump size installed (example 30 litres @175 Bar or 38 litres @ 140 Bar). **SUPER RAPTOR** is for function and construction one of the best machine on the market, for its characteristics it is ideal in the maintenance of underground pipes, in the civil protection, in powering high flow hydraulic tools and in all application where is necessary a professional hydraulic supply.

Available with different hydraulic power depending on request.

| TECHNICAL CHARACTERISTICS | SUPER RAPTOR SINGLE |
|---------------------------|---------------------------|
| Weight (kg) | 110 |
| Dimension LxWxH (cm) | 85x60x65 |
| Flow L/min | 30-38@140 Bar |
| Pressure Bar | 140/180 |
| Engine | Vanguard 18 hp - gasoline |
| Starter | recoil - electric |
| Acceleration | automatic (POD) or manual |
| Hoses Length std | 7 mt |



POWER PACKS

SUPER RAPTOR dual

Double parallel circuit at 19 L/min or single at 38 L/min Gasoline engine 18 Hp - Recoil and electric starter



- *Stainless steel frame with large folding handles*
- *All parts suspended on anti-vibration shock mounts*
- *Quick couplers installed on impact free swivel fitting*
- *High efficiency oil cooling system with centrifugal fan*
- *Central lifting hook*

SUPER RAPTOR DUAL is a twin tool hydraulic power pack with 18 Hp twin cylinder gasoline engine, with electric pull starter. The machine has double possibility of hydraulic supply: either two hydraulic circuit at 19 L/min each or combined in a single circuit at 38 L/min with a maximum pressure of 140 Bar. The engine acceleration can be fixed and also automatic with piston according to customer specifications. The selection of the type of flow and acceleration can be done in a while through comfortable levers.

Available with different hydraulic power depending on request.

| TECHNICAL CHARACTERISTICS | SUPER RAPTOR DUAL |
|---------------------------|---|
| Weight (kg) | 118 |
| Dimension LxWxH (cm) | 85x60x65 |
| Flow L/min | 30-38 |
| Pressure Bar | 140-180 |
| Engine | Briggs & Stratton 18 HP twin - gasoline |
| Starter | recoil - electric |
| Acceleration | automatic - manual |
| Hoses Length std | 7 mt |



GASOLINE

NITRO

Single circuit model: Flow max 50 L/min - Pressure max 210 Bar
Double circuit model: 2 circuit of 25 L/min cad. - Pressure max 210 Bar

- *Stainless steel frame with large folding handles*

- *Central lifting hook*

- *All parts suspended on anti-vibration shock mounts*

- *Quick couplers installed on impact free swivel fitting*

- *High efficiency oil cooling system with double radiator*

ENGINE POWER 23 Hp - BRIGGS & STRATTON "Vanguard"



NITRO is a hydraulic power pack with 23 HP engine designed to power tools and hydraulic equipment for high flow or pressure necessity. NITRO can be delivered with one or two parallel circuits or with different hydraulic powers according to customer specifications, example: 50 L/ min @ 140 Bar, or 38 L/ min @ 200 Bar or two flows: one 20 L/min and the second one 30 L/min that can be added having one single circuit of 50 L/min @140 Bar. The large capacity oil tank and the double radiator cooling system guarantee ideal hydraulic conditions even in the more demanding applications. The chassis can be "skid" type (in the illustrations) or with wheels and handles like the other power packs. The typical use is to drive heavy duty hydraulic equipment like drilling equipment, big water pumps, powering underwater tools and in all applications where is need a professional hydraulic supply. *Flexible hydraulic hoses are not included in price. Length and diameter of hoses depend upon the flow and use and must be specified at the order.*

| TECHNICAL CHARACTERISTICS | NITRO |
|---------------------------|---|
| Weight (kg) | 210 |
| Dimension LxWxH (cm) | 95x60x65 |
| Flow L/min | 10-50 (single circuit) |
| Flow L/min | 2 of 25 (double circuit) In the double circuit, the two flows can be added together to have a single course |
| Pressure Bar | 100-210 |
| Oil Tank capacity | 50 litres |
| Quick couplers | 3/4" flush face |
| Engine | Briggs & Stratton 23 HP - 2 cylinders - gasoline |
| Starter | recoil - belectric |
| Acceleration | manual |
| Gasoline tank | 30 litres |

POWER PACKS

DINAMO 35 H

Double circuit power pack - Gasoline engine 35Hp - Electric starter



- 12V socket and hours counter
- Extremely robust chassis with stainless steel superstructure and two large folding handles
- Large central wheels to facilitate movements on any ground
- Two Parallel oil coolers with centrifugal fan
- Manual engine acceleration allows to control the engine rpm and hydraulic flow
- Central lifting hook

DINAMO 35H is a double circuit power pack with gasoline engine 35Hp available in two configurations with flow 30 l/min x 2 - 60l/min x1 at 180 Bar or flow 40 l/min x2 - 80l/min x1 at 140 Bar. This power pack is developed to power two hydraulic tools of category D or E of EHTMA standard or special tools and pumps than require high flow and pressure.

DINAMO 35H has a Gasoline tank of 30l than guarantee an activity of 100% of engine power for 3 hours in continues.

| TECHNICAL CHARACTERISTICS | DINAMO 35 H dual |
|---------------------------|--|
| Weight (kg) | 205 |
| Dimension LxWxH (cm) | 640x867x1090 |
| Flow L/min | 30L/min x 2 - 60L/min x1 or 40L/min x 2 - 80L/min x1 |
| Pressure Bar | from 140Bar to max 210Bar |
| Engine | Vangard 35 Hp - gasoline |
| Starter | electric |
| Acceleration | manual |
| Hoses Length std | 7 mt |



GASOLINE



POWER PACKS

SCORPION D

20 L/min @ 100 Bar - (12 L/min @ 160 Bar) Engine Diesel Kohler 7hp - Recoil starter



- *Stainless steel frame with large folding handles*

- *All parts suspended on anti-vibration shock mounts*

- *Quick couplers installed on impact free swivel fitting*

- *High efficiency oil cooling system with centrifugal fan*



SCORPION D is a hydraulic power pack with 7,5 Hp Diesel engine - recoil start, thanks to the compact dimension can be easily lifted and transported. The machine is available in two configurations of hydraulic power: - 20 L/min @ 100 Bar adjustable - 12 L/min @ 160 Bar, adjustable. Agile and robust **SCORPION D** is ideal in general hydraulic applications and in all works where are needed the hydraulic characteristics of the machine.

| TECHNICAL CHARACTERISTICS | SCORPION D |
|---------------------------|----------------------------|
| Weight (kg) | 70 |
| Dimension LxWxH (cm) | 70x50x57 |
| Flow L/min | 20@100 Bar (12@ 160 Bar) |
| Pressure Bar | 100-160 |
| Engine | Yanmar 7,5 HP - diesel |
| Starter | recoil |
| Acceleration | manual |
| Hoses Length std | 7 mt |
| Gear pump | low noise helicoidal gears |



DIESEL

RAPTOR D

30 L/min @ 140 Bar - Engine Diesel Kohler 10.5hp - Recoil and electric starter

- *Stainless steel frame with large folding handles*
- *Central lifting hook*
- *All parts suspended on anti-vibration shock mounts*
- *Quick couplers installed on impact free swivel fitting*
- *High efficiency oil cooling system with double radiator*



RAPTOR D is an hydraulic power pack with 10,5 Hp Diesel engine with electric and recoil start, it can supply an hydraulic flow from 20 to 30 L/min @ 130 Bar adjustable by the manual accelerator. **RAPTOR D** is an ideal power pack for long lasting application thanks the high efficiency oil cooling system and Diesel engine.

| TECHNICAL CHARACTERISTICS | RAPTOR D |
|---------------------------|---------------------------------------|
| Weight (kg) | 90 |
| Dimension LxWxH (cm) | 85x60x65 |
| Flow L/min | 20-30 |
| Pressure Bar | 130 (or 200 Bar@ 20 L/min) |
| Engine | Kohler Diesel engine 10.5hp - Stage V |
| Starter | recoil - electric |
| Acceleration | manual |
| Hoses Length std | 7 mt |



POWER PACKS

DINAMO D

DINAMO single circuit 15 - 40 L/min @ 150 Bar - DINAMO double circuit 20 + 20 or 40 L/min@ 150 Bar
Engine Kohler 21hp diesel - electric starter



- Available with single or double circuit
- Extremely robust chassis with stainless steel superstructure with two large folding handles
- Large central wheels to facilitate movements on any ground
- Two Parallel oil coolers with centrifugal fan
- Manual engine acceleration allows to control the engine rpm and hydraulic flow
- Central lifting hook

DINAMO is an hydraulic power pack for heavy and prolonged application, configured with Diesel engine 21 Hp Kohler twin-cylinder engine, the machine is also available in two hydraulic configurations:

DINAMO SINGLE model with single circuit with only one pump, with flow 40 L / min @ 150 Bar

DINAMO DUAL model with two pumps and two parallel hydraulic circuits that can be connected in a single output, which adds the two flow rates, to provide:

- Two separate flow rates of 20 L / min - 150 Bar each.
- A range from 30 to 40 L / min @ 150 Bar

| TECHNICAL CHARACTERISTICS | DINAMO single | DINAMO dual |
|---------------------------|--------------------------------------|--------------------------------------|
| Weight dry (kg) | 227 | 236 |
| Weight with liquids (kg) | 250 | 259 |
| Dimension LxWxH (cm) | 100x65x85 | 100x65x85 |
| Wheels diameter (mm) | 380 | 380 |
| Engine | Hatz 2G4 40H - 202 A - 10.0 - diesel | Hatz 2G4 40H - 202 A - 10.0 - diesel |
| Starter | electric | electric |
| Power | 21 HP - 2 cylinders | 21 HP - 2 cylinders |
| Fuel tank capacity | 6 litres | 6 litres |
| Flow L/min | 15-40 | 20+20 or 40 |
| Pressure Bar | 150 - 200 adjustable | 150 - 200 adjustable |
| Oil cooling | 2 radiators in parallel | 2 radiators in parallel |
| Quick couplers | 1/2 flush face | 1/2 flush face |
| Oil tank capacity | 17 litres | 17 litres |
| Gear pump | low noise helicoidal gears | low noise helicoidal gears |



DIESEL

NITRO D

Special Power Pack

- Available with single or double circuit
- Skid frame with central lifting hook
- 50 L oil tank capacity
- All parts suspended on anti-vibration shock mounts
- Diesel engine water cooled Stage V/Tier 4
- 30 L Diesel tank capacity

DIESEL ENGINE 25 HP KUBOTA

The Hydraulic Valve Diversion On / Off Valves Are Electrically Operated By A 12 V Solenoid



NITRO is a heavy duty hydraulic power unit with a Diesel engine 25hp Kubota water cooled, designed to operate high-flow hydraulic tools and equipment. **NITRO** can be delivered with one or two parallel circuits or with different hydraulic power according to customer specifications, example: 50 L/ min @ 140 Bar, or 38 L/ min @ 200 Bar or two flows: one 20 L/min and the second one 30 L/min that can be added having one single circuit of 50 L/min. The large capacity oil tank and the double radiator cooling system guarantee ideal hydraulic conditions even in the more demanding applications. The typical use is to drive heavy duty hydraulic equipment like drilling equipment, big water pumps, powering underwater tools and in all applications where is needed a professional hydraulic supply.

In the double circuit model the two flows and the pump size, can be changed according to application of customer specifications

| TECHNICAL CHARACTERISTICS | NITRO D single | NITRO D dual |
|---------------------------|------------------------------------|------------------------------------|
| Weight (kg) | 210 | 210 |
| Dimension LxWxH (cm) | 95x60x65 | 95x60x65 |
| Flow L/min | 20-60 | On customer specifications |
| Pressure Bar | 100-210 | 100-210 |
| Engine | Kubota 25 HP water cooled - diesel | Kubota 25 HP water cooled - diesel |
| Starter | electric | electric |
| Acceleration | manual | manual |
| Oil tank | 50 litres | 50 litres |
| Quick coupler | 3/4" flush face | 3/4" flush face |
| Cylinder | 3 | 3 |
| Fuel tank capacity | 30 litres | 30 litres |

POWER PACKS

LOTUS

Special Power Pack with Diesel engine Kohler 56hp

POWER PACK FOR HEAVY DUTY APPLICATION



control panel

LOTUS is a professional power pack with Diesel engine designed for heavy duty prolonged operations. The engines are available in different emission compliance in according with the application area regulation. LOTUS HPU is available in different configurations of hydraulic power output and number of hydraulic circuits, the configuration must be specified at the order. Standard configurations of the diesel engine with KOHLER engine 56hp, water cooled

Possible hydraulic configurations:

- One hydraulic circuit with one gear pump for a single use
- Two hydraulic circuits with two gear pumps for two parallel uses or for one single use when joining the two flows
- Piston pump (for pressures above 210 bar)
- Additional of remote control with different configurations

Hydraulic characteristics *(depending on engine type, hydraulic circuit type and application)*

Maximum flow in single circuit: 120 L/min - Maximum flow of the two separate circuits: 60 L/min every circuit

Maximum Pressure with standard gear pumps: 210 Bar - Maximum Pressure with piston pump: 350 Bar

DIESEL

LOTUS

Special Power Pack with Diesel engine Kohler 56Hp

POWER PACK FOR HEAVY DUTY APPLICATION

- *Adjustable flow rate via motor speed control*
- *Real-time adjustable pressures*
- *Bottom base with safety catch tank in case of accidental spillage of liquids*
- *Extremely robust chassis in square tubes and sheet metal with forklifting-base*
- *High capacity battery with marine type detachment for prolonged storage*
- *Hydraulic oil tank with a large capacity of 140 L*
- *Available with piston pump for pressure over 210 Bar (310 Bar Max)*



| TECHNICAL CHARACTERISTICS | LOTUS |
|---------------------------|--|
| Weight dry (kg) | 1000 |
| Dimension LxWxH (cm) | 160x90x130 |
| Flow L/min | 60 - 150 |
| Pressure Bar | max. 210 Bar with gear pump - 350 Bar with piston pump |
| Engine | Kohler 56hp Diesel - Stage V (standard version) |
| Starting | electric |
| Acceleration | manual |
| Quick couplers | 3/4" flush face |
| Oil tank | 120 litres |
| Fuel tank capacity | 80 litres |

POWER PACKS

SUPER RAPTOR E

30 - 42 L/min @ 210 Bar Engine triphase 400 V - 50 Hz power 9-11-15 Kw



- *Stainless steel frame with large frontal and lateral folding handles*

- *Central lifting hook*

- *All parts suspended on anti-vibration shock mounts*

- *Quick couplers installed on impact free swivel fitting*

- *High efficiency oil cooling system with double radiator*

Professional power pack with tri phase electric motor designed to power hydraulic tools and various hydraulic equipment, the motor power can be supplied with power 9 - 11 - 15 KW and the hydraulic power output can be with flow up to 42 L/min and pressures up to 210 Bar according to customer specifications. **SUPER RAPTOR E** is fabricated for heavy duty operations, the high efficiency oil cooling system with exclusive double radiator guarantees the best performances even in the hottest climate and with the more demanding applications. The electric control panel has all the needed defences to guarantee the operator safety and the machine integrity in all conditions. Thanks to the compact dimension and to the three bendable handles the operations of loading and movements are easy and swif.

The power of the electric motor depends on the hydraulic power required in pressure and flow, the values must be specified at the order.

| TECHNICAL CHARACTERISTICS | SUPER RAPTOR E |
|---------------------------|---|
| Weight (kg) | 120 |
| Dimension LxWxH (cm) | 85x60x65 |
| Flow L/min (with pump) | 26 (pump 9 cc) - 32(pump 11 cc) - 40 (pump 14 cc) |
| Pressure Bar | 140-210 |
| Engine | treephase 400V - 50 Hz |
| Motor power | 9-11-15-Kw |
| Hoses Length std | 7 mt |



ELECTRIC

ENERGA

20-30-40 L/min - 210 Bar Engine triphase 11 Kw - 400 V - 50 Hz with INVERTER

- *Inverter with control motor speed and flow or proportionally or three step 20-30-40 L/min*

- *Stainless steel frame with large frontal and lateral folding handles*

- *Central lifting hook*

- *All parts suspended on anti-vibration shock mounts*

- *Quick couplers installed on impact free swivel fitting*

- *High efficiency oil cooling system with double radiator*

MULTI FLOW POWER PACK WITH INVERTER

ELECTRIC POWER PACK WITH INVERTER



Electro-hydraulic control unit equipped with **INVERTER** which allows to change the three-phase motor speed and to have three hydraulic flows of 20 - 30 - 40 L / min immediately available and selectable by means of an electric 3-position control. **ENERGA** is manufactured for heavy and prolonged uses, the exclusive double radiator oil cooling system ensures trouble-free operation even with the most demanding equipment. The electrical panel is equipped with all the necessary defenses to protect the safety of the operators and the integrity of the machine. Thanks to the compact dimensions and the comfortable handles the movement and the loading operations are easy and fast.

ENERGA can be supplied also with INVERTER with progressive variation of motor speed, so not with the three fixed flow/speed like the standard aversion

| TECHNICAL CHARACTERISTICS | ENERGA |
|---------------------------|------------------------|
| Weight (kg) | 120 |
| Dimension LxWxH (cm) | 85x60x65 |
| Flow L/min | 20-30-40 |
| Pressure Bar | 140-210 |
| Engine | treephase 400V - 50 Hz |
| Electric power | 11 Kw |
| Hoses Length std | 7 mt |



POWER PACKS

ASPID GETZ

Hydraulic power 12 L/min @ 140 Bar



The electronic remote control with the start/stop function of the combustion engine of the power pack with acceleration control of the engine revolutions is available on request and at a higher price.

Hydraulic power pack designed to operate hydraulic equipment such as winches, capstans, rotary organs or double-acting cylinders that must be controlled remotely, the machine is equipped with a modern wireless remote control electronic system that, by means of a portable console, controls the hydraulic functions of the machine such as:

- **FOR HYDRAULIC MOTORS**

the functions of clockwise/stop/anti clockwise rotation with speed control up to a distance of 80 meters from the control unit.

- **FOR HYDRAULIC CYLINDERS**

the functions press/hold/retract with speed control up to a distance of 80 meters from the power pack.

In the event of a failure of the electronic remote control, the power pack allows normal use with manual control only hydraulic, can therefore be used with the same functions regardless of remote control, the pressure gauge indicates the load value allowing an accurate adjustment of the movements. The weight and the dimensions contained at the maximum guarantee excellent portability and mobility both on board the vehicles and on the ground. **ASPID GETZ** has an accurate build quality, is manufactured with the best materials and components to guarantee a long and trouble-free service.

| TECHNICAL CHARACTERISTICS | ASPID GETZ |
|---------------------------|---|
| Weight (kg) | 62 |
| Dimension LxWxH (cm) | 70x50x57 |
| Flow L/min | 12@140 Bar (together) |
| Pressure Bar | 140 max@12 L/m |
| Engine | Briggs & Stratton 6HP - gasoline |
| Starter | recoil - electric |
| Acceleration | manual |
| Hoses Length std | 10 mt - \varnothing 3/8" - tread 3/8" BSP |
| Oil tank capacity | 7 litres |
| Quick couplers | 3/8" a flush face |



SPECIAL VERSION

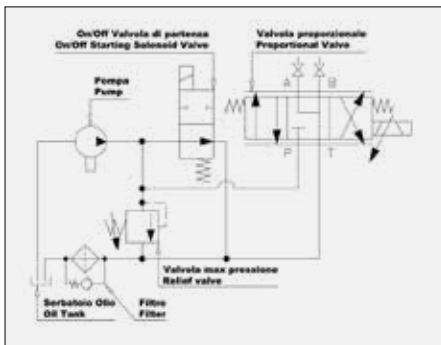
ASPID GETZ

Hydraulic power packs for special applications

HYDRAULIC CONTROL UNIT FOR MANEUVERING AND CONTROL OF ROTATING EQUIPMENT OR DOUBLE EFFECT CYLINDERS



The **remote control** function and therefore the relative kit can also be installed on larger DOA control units to provide higher hydraulic pressure and flow capacities according to customer specifications.



- 1 General ON/OFF starting knob**
the same function as the key of a car, in the on position, allows all the functions to be started.
- 2 Led light with green light**
indicates that the appliance is on and ready to use.
- 3 Emergency safety button**
like "dead man" type, therefore to be kept pressed during operation, as soon as it is released, everything goes off (only the electronic part is turned off).
- 4 Joystick for control of movements**
it controls the 3 functions of clockwise /stop/anticlockwise rotation, it is of a proportional type, thus allowing the regulation of the rotation speed.
- 5 Emergency stop button**
if pressed, immediately cancels all the electronic parts functions, then press button 6 to reactivate.



POWER PACKS

HYDRAULIC GROUP FOR TRAINS

Hydraulic group for maneuver the upper deck of car transporting trains



Hydraulic group formed by a small power pack and a hydraulic motor with proportional control valve studied for the mechanical rotation of organs that are normally rotated manually by hands. The group is used for lifting and lowering the upper deck of trains that transport automobiles, use is ideal for avoiding prolonged and tiring manual operations, it is enough to insert the tool spindle in the organ to turn and acting control valve is possible to rotate rapidly and without fatigue the more hard and heavy devices. The tool control valve is proportional type and allow rotation in two senses with speed control. The strong rotation force do not has to be controlled by the operator but is contrasted by the adjustable arm that assure the operator safety. Powerful and practical the group eliminates fatigue and down time increasing the productivity.

| TECHNICAL CHARACTERISTICS | POWER PACKS |
|---------------------------|------------------------------------|
| Weight (kg) | 98 |
| Dimension LxWxH (cm) | 130x50x90 |
| Engine | Briggs & Stratton 14 Hp - gasoline |
| Starter | recoil - electric |
| Hydraulic power | 20 L/min @ 180 Bar |

| TECHNICAL CHARACTERISTICS | DH 80 |
|---------------------------|-------------------|
| Weight (kg) | 12 |
| Torqued/Speed max | 35 Nm/120 rpm/min |
| Hoses Lenght | 10 mt |

SPECIAL VERSION

HYDRAULIC GROUP FOR TRAINS

Hydraulic group for maneuver the upper deck of car transporting trains

- Robust frame in stainless steel with balanced handle to ease the transportability
- The upper plastic tray allow to conveniently put down tool after use
- High quality power pack with oil cooler to allow prolonged operations in tropical climates
- Large diameter wheels ease movements on rough terrains and ballast
- Tool can be used at a distance of 30 metres from the pack
- Hydraulic motor torque is adjustable



DH 80

