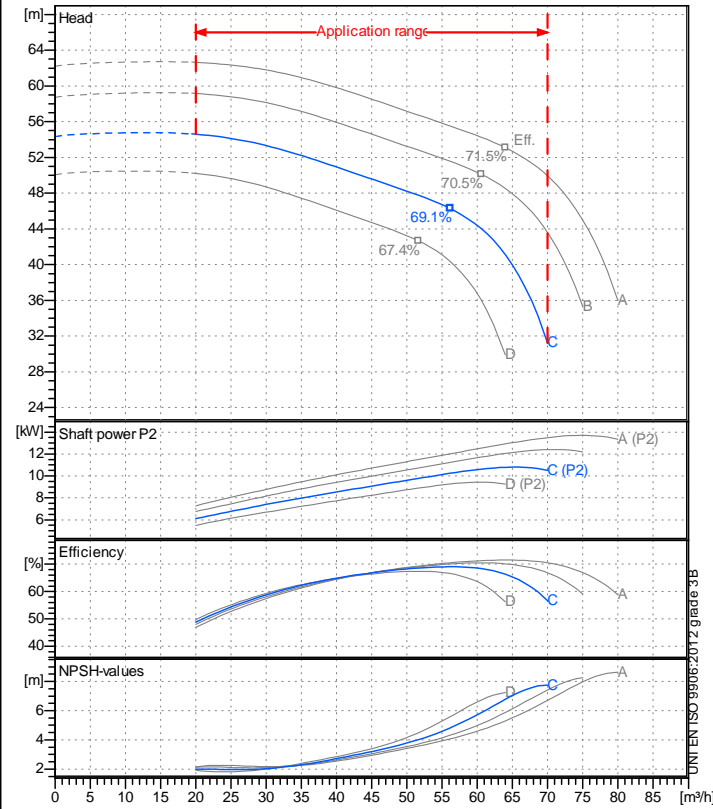


Receiver

From

 Company name
 Respons. Department
 Person in charge
 Phone number
 Fax no
 E-mail address

Operating data specification

Nominal flow	m ³ /h 0
Nominal head	m 0
Static head	m 0
NPSH - v alue of plant	m 0
Inlet pressure	bar 0.09793
Fluid	Water, pure
Operating temperature t A	°C 20
Density at t A	kg/dm ³ 0.9983
Kin. viscosity at t A	mm ² /s 1.005

Pump

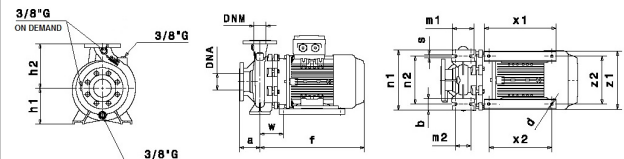
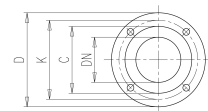
Pump name	IR50-200SC		
Size	65/50/200		
MEI (Reg. 547/2002 EU) >	0,6		
Speed 1/min	2900	No of stages	1
Impeller type			
Flow	Nominal	m ³ /h	
	Max-	m ³ /h	70
	Min-	m ³ /h	20
Head	Nominal	m	
	Max-	m	54.6
	Min-	m	31.3
Head H(Q=0)	m	54.4	
NPSH 3%	m		
Max. working pressure	bar	5.32	
Shaft power	kW		
Efficiency	%		
Max absorbed power	kW	10.812	

Materials Pump

Shaft	Stainless steel AISI 431 (1.4057)		
Impeller	Cast iron EN-GJL-250		
Pump body	Cast iron EN-GJL-250		
Seal disc	Cast iron EN-GJL-250		
Gasket	Natural fiber		
Mechanical seal	BVEG (Grafite/Ossido Allumina/EPDM)		

Dimensions in mm

a	100	z1	265	DNM	DNA	
b	50	z2	212	C	102	C 122
d	12			D	165	D 185
f	509			DN	50	DN 65
h1	160			K	125	K 145
h2	200			n°	4 x 19 mm	4 x 19 mm
m1	100					
m2	70					
n1	265					
n2	212					
s	14					
w	113					
x1	100					
x2	70					



Motor	Manufacturer / Type	SAER	132-2P-15	
Efficiency	IEC 60034-30	IE3		
Rated power	kW 11	Efficiency 4/4	91.5 %	
Number of poles	2	Frame size	132	
Electric current	A 20.6 A	Speed	1/min	2949
Electric voltage	V 400 V	3~	Hz	50
Starting mode	Unknown			
Degree of protection	IP 55	Insulation class	F	

Remarks:

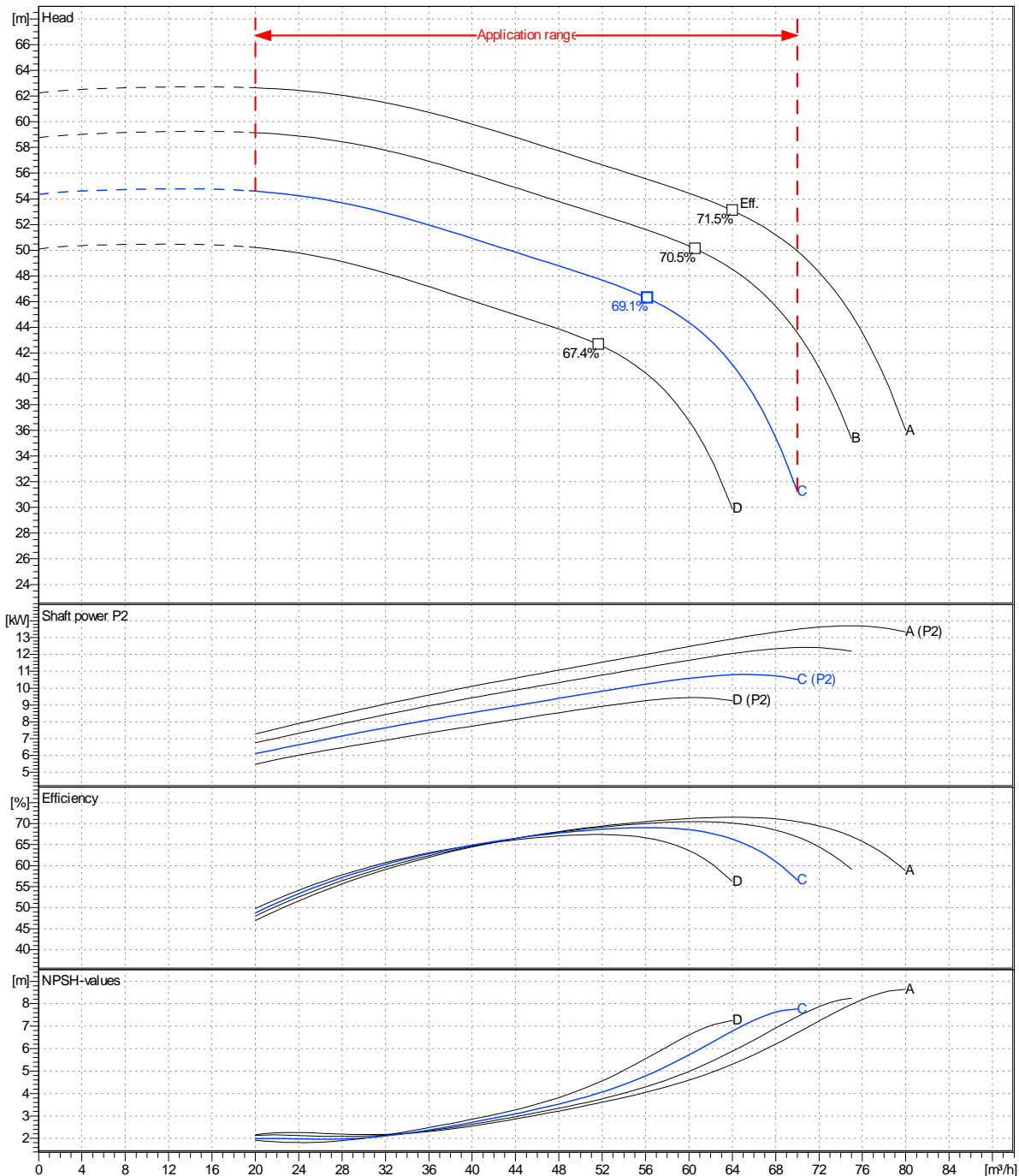
Project	Project ID	Created by	Created on	Last update
			2023-04-04	

Receiver	From
Company name	
Respons. Department	
Person in charge	
Phone number	
Fax no	
E-mail address	

Operating area	Flow	Head	Impeller type
Operating data specification	0 m ³ /h	0 m	Impeller construction
Pump data	m ³ /h	m	Sense of rotation
			Clockwise from the drive end
			Outlet width
			DN50
	Flow	Head	Shaft power P2
	Min. Max. η Max.	H(Q=0) η Max.	P2(Q=0) Max. η Max.
	m ³ /h m ³ /h m ³ /h	m m	kW kW kW
	20 70 56.2	54.4 46.3	10.8 10.2
			Speed
			1/min 2900
			Frequency
			Hz 50 Hz

 Performance data based to: Water, pure [100%]; 20°C; 0.998kg/dm³; 1mm²/s

UNI EN ISO 9906:2012 - Grade 3B



Project	Project ID	Created by	Created on	Last update
			2023-04-04	

Revision no

Pump dimensions

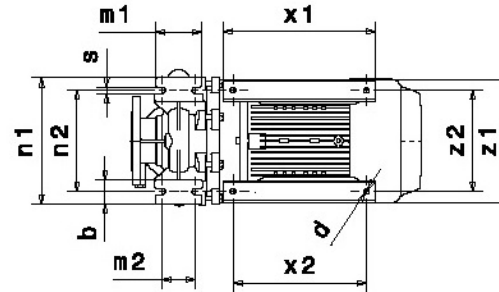
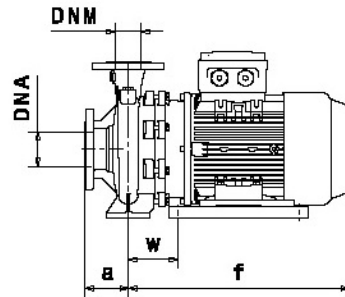
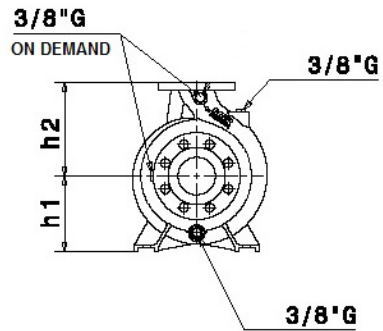
Connections

Suction side DN65 PN10 / PN16	Discharge port DN50 PN10 / PN16
-------------------------------------	---------------------------------------

Dimensions in mm

a
b
d
f
h1
h2
m1
m2
n1
n2
s
w
x1
x2
z1
z2

100
50
12
509
160
200
100
70
265
212
14
113
100
70
265
212



Disegni dimensionali e immagini non vincolanti. Saer si riserva il diritto di effettuare cambiamenti senza alcun preavviso.
Dimensional drawing and picture are not binding. Saer reserves the right to make changes without prior notice.

Project

Project ID

Created by

Created on
2023-04-04

Last update