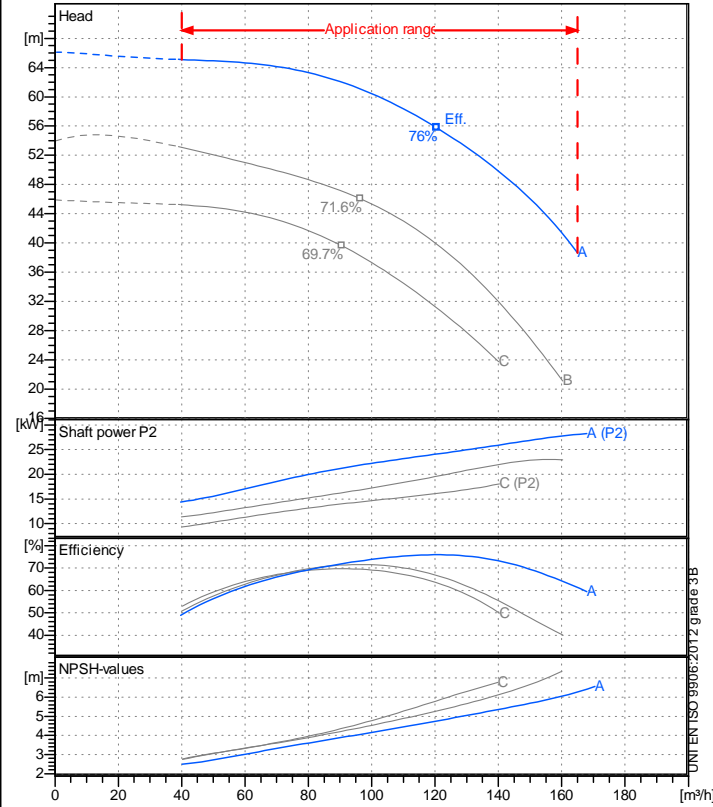


Receiver

From

 Company name
 Respons. Department
 Person in charge
 Phone number
 Fax no
 E-mail address

Operating data specification

Nominal flow	m ³ /h 0
Nominal head	m 0
Static head	m 0
NPSH - v value of plant	m 0
Inlet pressure	bar 0.09793
Fluid	Water, pure
Operating temperature t A	°C 20
Density at t A	kg/dm ³ 0.9983
Kin. viscosity at t A	mm ² /s 1.005

Pump

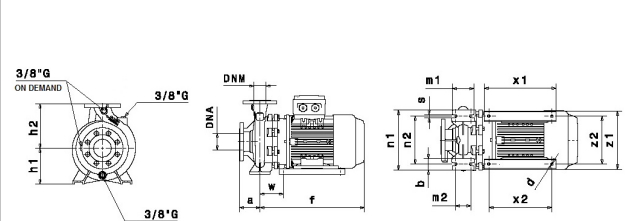
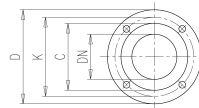
Pump name	IR65-200NA		
Size	80/65/200		
MEI (Reg. 547/2002 EU) >	0,4		
Speed 1/min	2900	No of stages	1
Impeller type			
Flow	Nominal	m ³ /h	
	Max-	m ³ /h	165
	Min-	m ³ /h	40
Head	Nominal	m	
	Max-	m	65.1
	Min-	m	38.7
Head H(Q=0)			m 66.1
NPSH 3%			m
Max. working pressure			bar 6.47
Shaft power			kW
Efficiency			%
Max absorbed power			kW 28.232

Materials Pump

Shaft	Stainless steel AISI 431 (1.4057)		
Impeller	Cast iron EN-GJL-250		
Pump body	Cast iron EN-GJL-250		
Seal disc	Cast iron EN-GJL-250		
Gasket	Natural fiber		
Mechanical seal	BVEG (Grafito/Ossido Allumina/EPDM)		

Dimensions in mm

a	100	z1	359	DNM	DNA		
b	65	z2	279	C	122	C	138
d	14			D	185	D	204
f	731			DN	65	DN	80
h1	180			K	145	K	160
h2	225			n°	4 x 19 mm		8 x 19 mm
m1	125						
m2	95						
n1	320						
n2	250						
s	14						
w	225						
x1	321						
x2	0.8638						



Motor	Manufacturer / Type	SAER	180-2P-40	
Efficiency	IEC 60034-30	IE3		
Rated power	kW 30	Efficiency 4/4	93.3 %	
Number of poles	2	Frame size	180	
Electric current	A 52.5 A	Speed	1/min	2962
Electric voltage	V 400 V	3~	Hz	50
Starting mode	Unknown			
Degree of protection	IP 55	Insulation class	F	

Remarks:

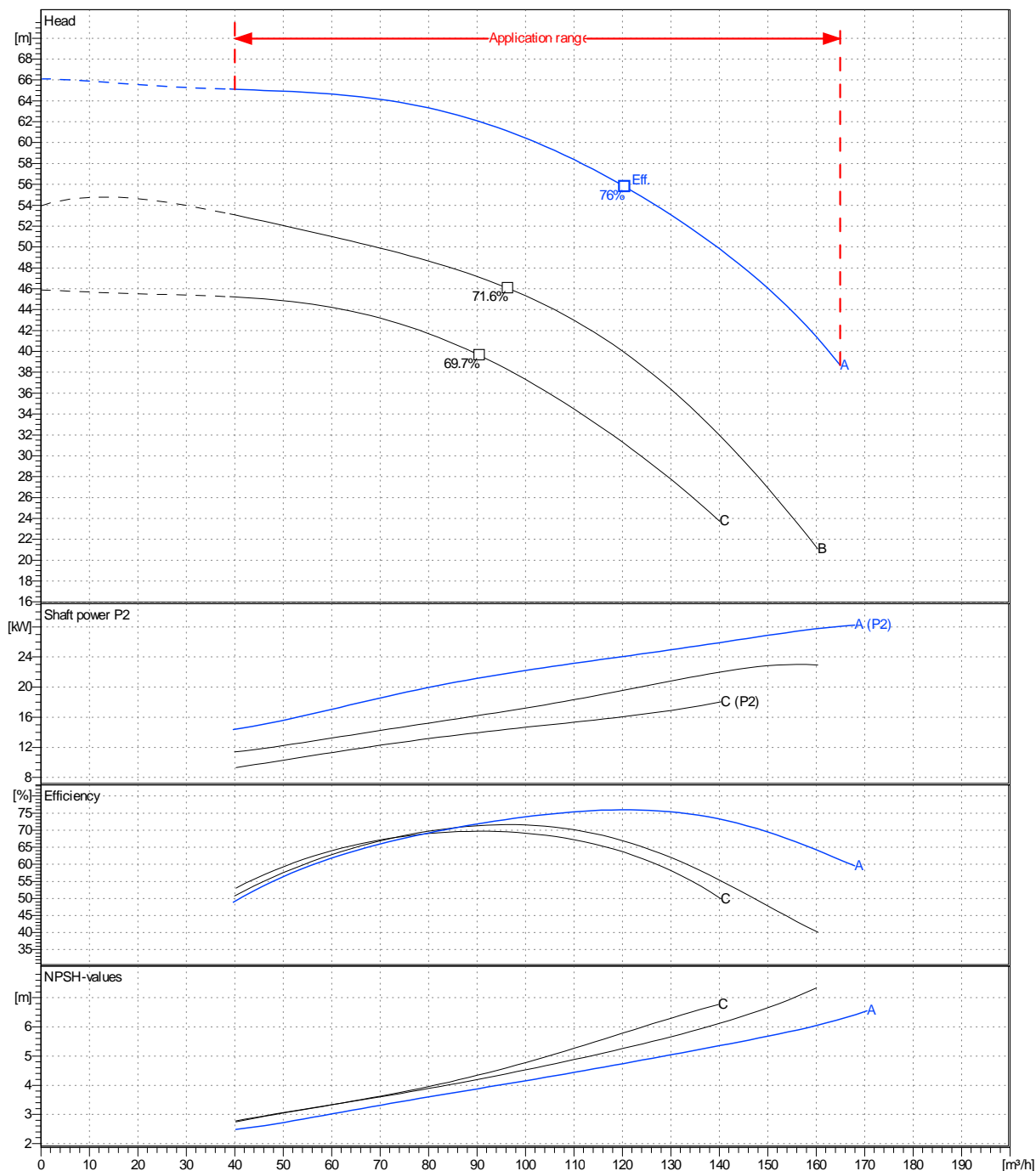
Project	Project ID	Created by	Created on	Last update
			2023-04-12	

Receiver	From
Company name	
Respons. Department	
Person in charge	
Phone number	
Fax no	
E-mail address	

Operating area	Flow	Head	Impeller type
Operating data specification	0 m ³ /h	0 m	Impeller construction: Closed
Pump data	m ³ /h	m	Sense of rotation: Clockwise from the drive end
			Outlet width: DN65
	Flow	Head	Shaft power P2
	Min. Max. η Max.	H(Q=0) η Max.	P2(Q=0) Max. η Max.
	m ³ /h m ³ /h m ³ /h	m m	kW kW kW
	40 165 121	66.1 55.8	28.2 24.1
			Speed: 1/min 2900
			Frequency: Hz 50 Hz

Performance data based to: Water, pure [100%]; 20°C; 0.998kg/dm³; 1mm²/s

UNI EN ISO 9906:2012 - Grade 3B



Project	Project ID	Created by	Created on	Last update
			2023-04-12	

Revision no

Pump dimensions

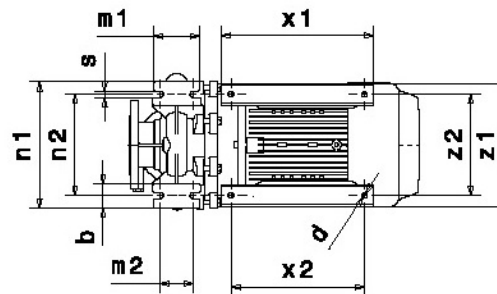
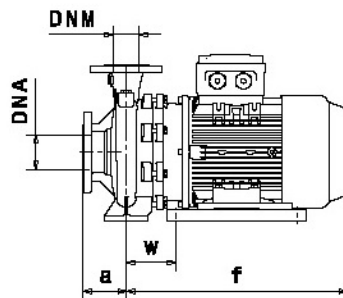
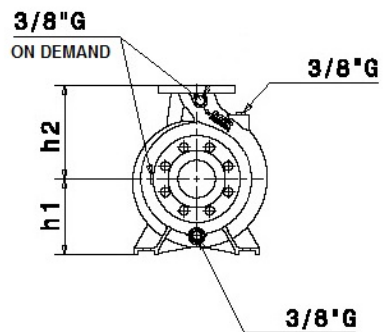
Connections

Suction side	Discharge port
DN80	DN65
PN10 / PN16	PN10 / PN16

Dimensions in mm

a	100
b	65
d	14
f	731
h1	180
h2	225
m1	125
m2	95
n1	320
n2	250
s	14
w	225
x1	321
x2	0.8638
z1	359
z2	279

Disegni dimensionali e immagini non vincolanti. Saer si riserva il diritto di effettuare cambiamenti senza alcun preavviso.
Dimensional drawing and picture are not binding. Saer reserves the right to make changes without prior notice.



Project

Project ID

Created by

Created on
2023-04-12

Last update