

## 51. MTH/MTC

### MTH/MTC 2, 4

#### 50/60 Hz

#### Metal terminal box

Pos.	Models	All
	Kit No	405179
Description		
164a	Terminal box with gasket	1
164	Terminal box cover with gasket	1
166	Screw	4
175	Screw	4
176	Terminal complete	1

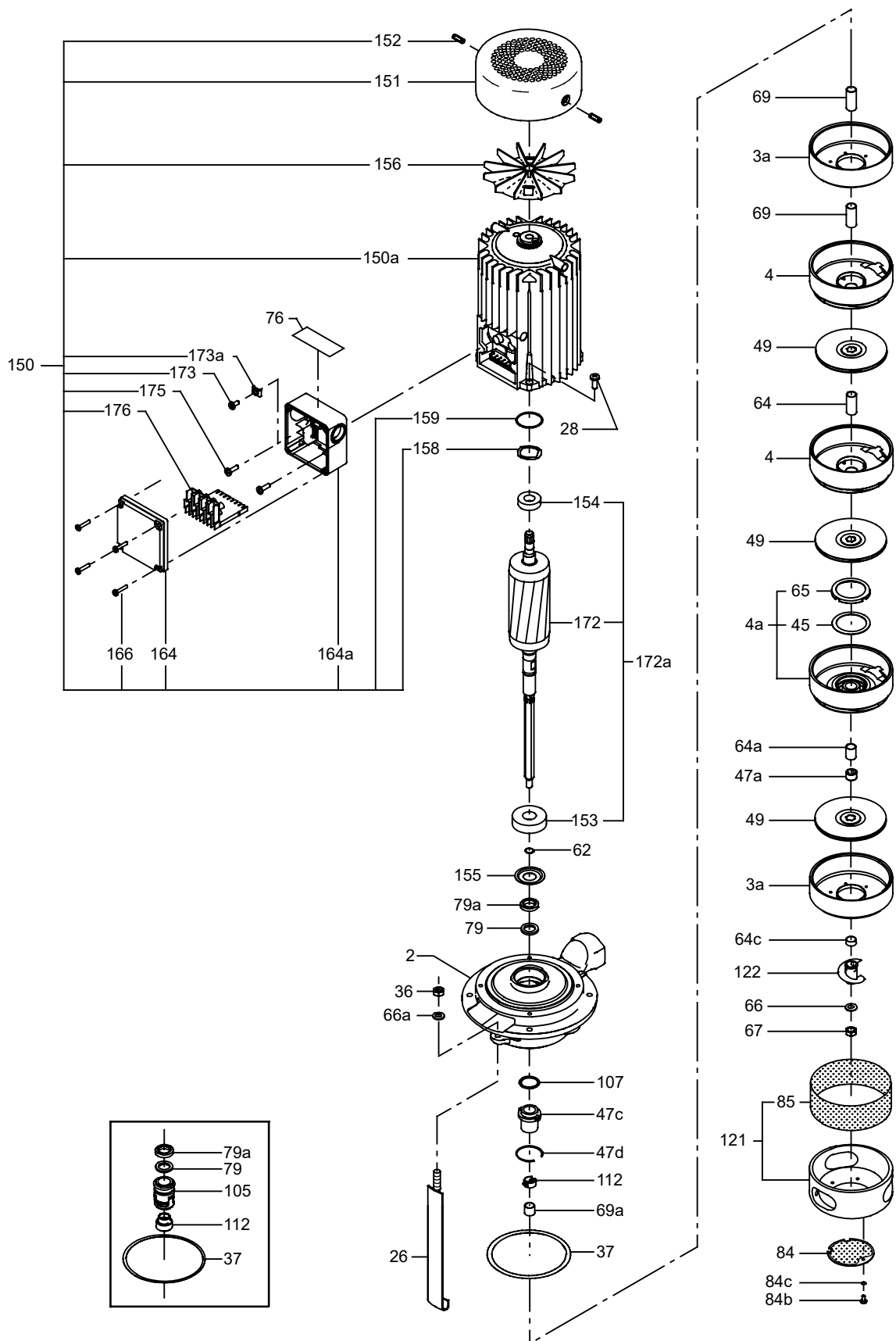
#### Shaft seal

Pos.	Kit No	MTH/C 2, 4	
		435045	98455535
Description		AUUV	AQQV
37	Gasket	1	1
79	Thrower	1	1
79a	Lip seal	1	1
105	Shaft seal	1	1

#### Wear parts

Pos.	Kit No	MTH/C 2-30	MTH/C 2-50	MTH/C 4-20	MTH/C 4-40
		MTH/C 2-40	MTH/C 2-60	MTH/C 4-30	MTH/C 4-50
Description		MTH/C 2-100	MTH/C 2-110		MTH/C 4-60
Description		435032	435033	445057	445058
4a	Bearing chamber	-	1	-	1
36	Nut	3	3	3	3
37	Gasket	1	1	1	1
45	Neck ring	4	5	-	-
47a	Bearing ring	-	1	-	1
62	Stop ring	1	1	1	1
64a	Spacing pipe 7.8 mm	1	1	-	-
65	Neck ring retainer	4	5	-	-
66	Spring washer	1	1	1	1
66a	Washer	3	3	3	3
67	Lock nut	1	1	1	1
122	Priming screw	1	1	-	-

MTH/MTC 2, 4



TM025297

Shaft seal

**MTH, MTC 8, 12, 16****Metal terminal box**

		MG 71/80
Pos.	Models Kit No	405179
Description		
164a	Terminal box with gasket	1
164	Terminal box cover with gasket	1
166	Screw	4
175	Screw	4
176	Terminal complete	1

**Shaft seal**

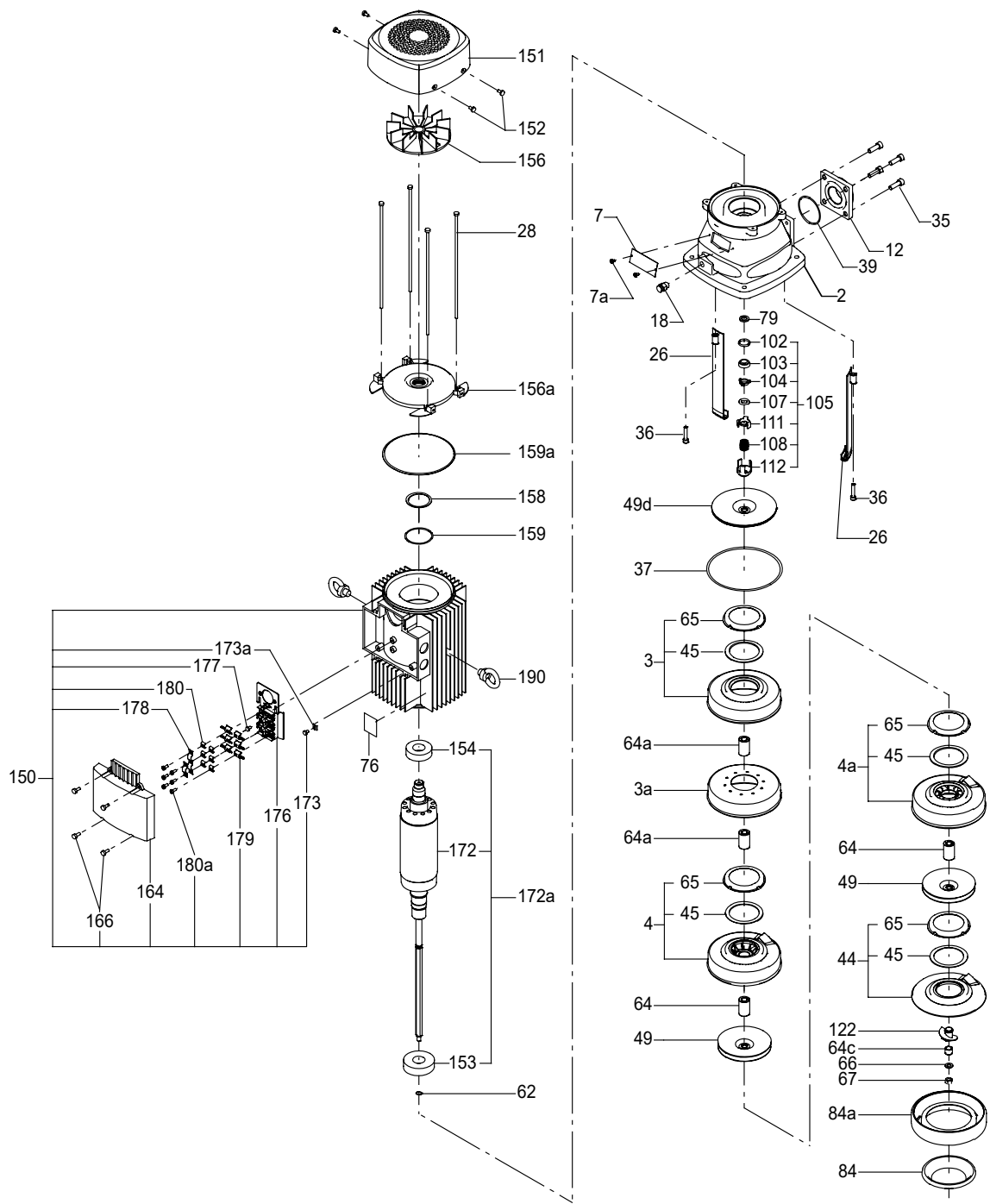
		MTH/MTC 8, 12, 16
Pos.	Kit No	96431994
Description		
AUUV		
37	O-ring, for pumps manufactured after 0643 (yyww)	1
105	Shaft seal complete	1

**Wear parts**

		MTH/MTC 8/12	MTH/MTC 16
Pos.	Kit No	96435991	96435992
Description			
4a	Bearing chamber	1	1
37	Gasket 145/138 x 0.25	1	1
45	Neck ring	7	4
45b	Neck ring	-	1
49c	Impeller wear ring	-	4
64		29 mm	6
		28.5 mm	4
64a	Spacing pipe	30 mm	6
64b		15 mm	-
64c		10.5 mm	-
64d		10 mm	-
65	Neck ring retainer	7	4
65a	Neck ring retainer	-	1
66	Spring washer	1	1
67	Lock nut, M8	1	1
69	Spacing pipe 5.8 mm	-	1

MTH, MTC 8, 12, 16

MTH/MTC



TM016378

96488862 06.2022

**GRUNDFOS Holding A/S**  
Poul Due Jensens Vej 7  
DK-8850 Bjerringbro  
Tel: +45 87 50 14 00  
[www.grundfos.com](http://www.grundfos.com)

**GRUNDFOS** 