

# NT 3315 HT 3~ 451

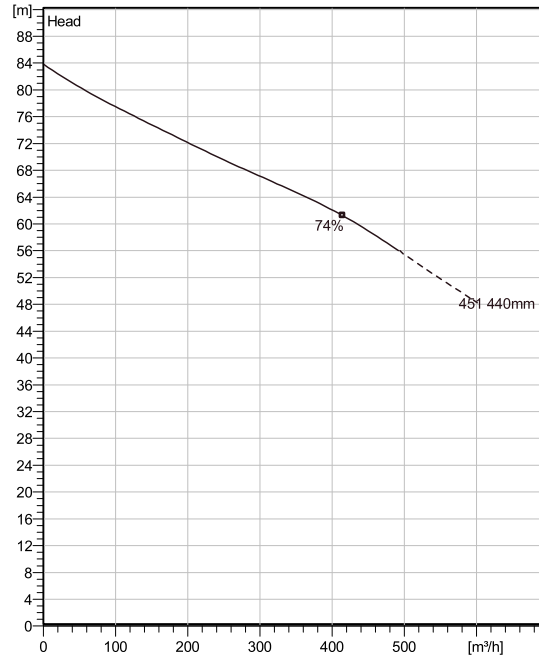
Patented self cleaning semi-open channel impeller, ideal for pumping in most waste water applications. Modular based design with high adaptation grade.



## Technical specification



Curves according to: Water, pure Water, pure [100%], 4 °C, 1 kg/dm<sup>3</sup>, 1.569 mm<sup>2</sup>/s



Nominal (mean) data shown. Under- and over-performance from this data should be expected due to standard manufacturing tolerances. Please consult your local Flygt representative for performance guarantees.

## Configuration

<b>Motor number</b> N3315.180 35-45-4AA-D 105KW	<b>Installation type</b> T - Vertical Permanent, Dry
<b>Impeller diameter</b> 440 mm	<b>Discharge diameter</b> 150 mm

## Configuration

## Pump information

<b>Impeller diameter</b> 440 mm
<b>Discharge diameter</b> 150 mm
<b>Inlet diameter</b> 200 mm
<b>Maximum operating speed</b> 1480 1/min
<b>Number of blades</b> 3
<b>Max. fluid temperature</b> 40 °C

## Material

<b>Impeller</b> Grey cast iron
-----------------------------------

**Project** Xylect-20786458  
**Block**

**Created by** Vilma Razumaite  
**Created on** 6/29/2023 **Last update** 6/29/2023

# NT 3315 HT 3~ 451

## Technical specification



### Motor - General

<b>Motor number</b> N3315.180 35-45-4AA-D 105KW	<b>Phases</b> 3~	<b>Rated speed</b> 1480 1/min	<b>Rated power</b> 105 kW
<b>Approval</b> No	<b>Number of poles</b> 4	<b>Rated current</b> 199 A	<b>Stator variant</b> 1
<b>Frequency</b> 50 Hz	<b>Rated voltage</b> 400 V	<b>Insulation class</b> H	<b>Type of Duty</b> S1
<b>Version code</b> 180			

### Motor - Technical

<b>Power factor - 1/1 Load</b> 0.81	<b>Motor efficiency - 1/1 Load</b> 93.9 %	<b>Total moment of inertia</b> 1.37 kg m <sup>2</sup>	<b>Starts per hour max.</b> 15
<b>Power factor - 3/4 Load</b> 0.76	<b>Motor efficiency - 3/4 Load</b> 94.7 %	<b>Starting current, direct starting</b> 1100 A	
<b>Power factor - 1/2 Load</b> 0.64	<b>Motor efficiency - 1/2 Load</b> 94.9 %	<b>Starting current, star-delta</b> 368 A	

**Project** Xylect-20786458  
**Block**

**Created by** Vilma Razumaite  
**Created on** 6/29/2023 **Last update** 6/29/2023

# NT 3315 HT 3~ 451

## Performance curve

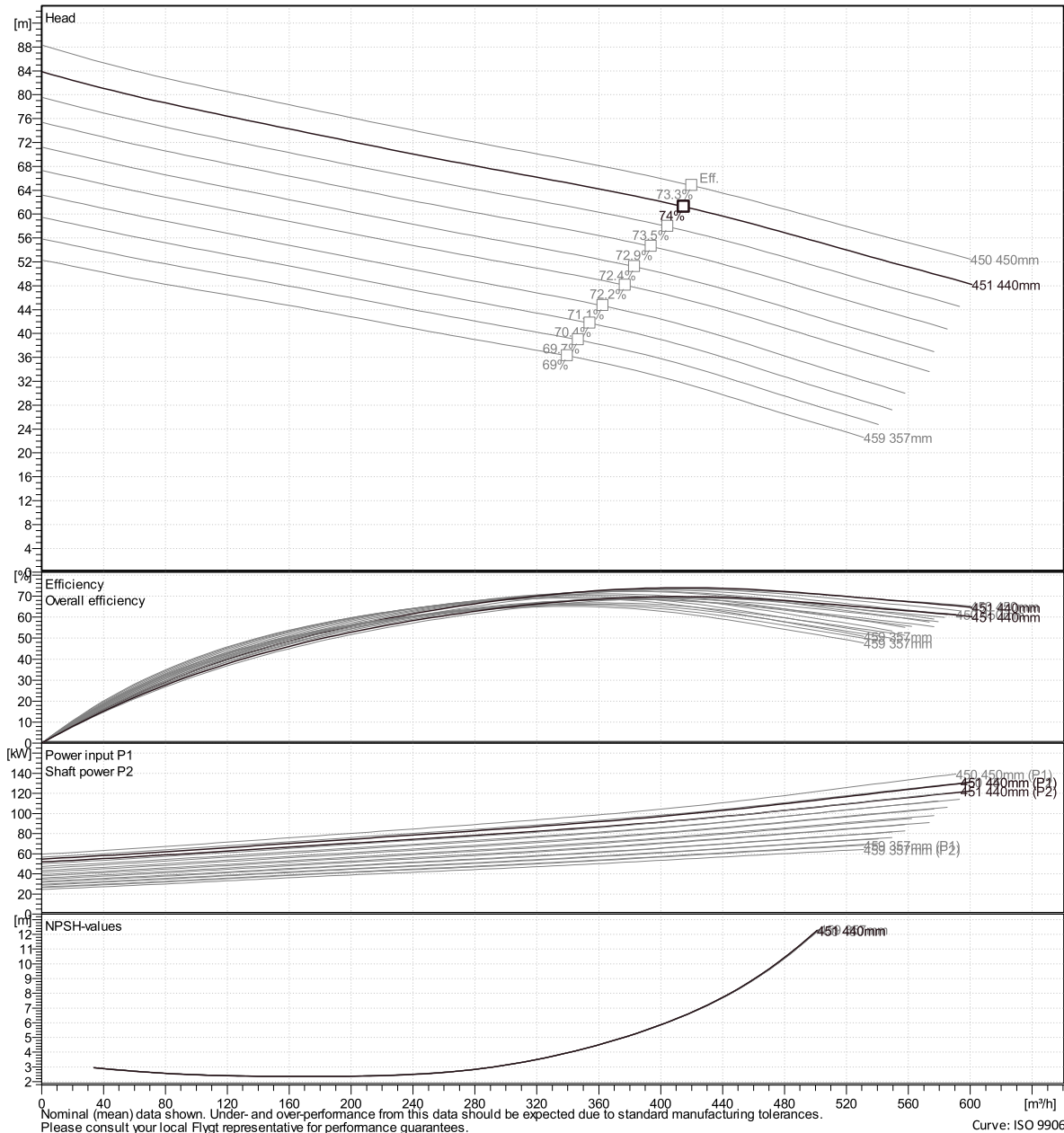


### Duty point

Flow

Head

Curves according to: Water, pure Water, pure [100%], 4 °C, 1 kg/dm<sup>3</sup>, 1.569 mm<sup>2</sup>/s



Nominal (mean) data shown. Under- and over-performance from this data should be expected due to standard manufacturing tolerances. Please consult your local Flygt representative for performance guarantees.

Curve: ISO 9906

Xylect-20786458

Vilma Razumaite

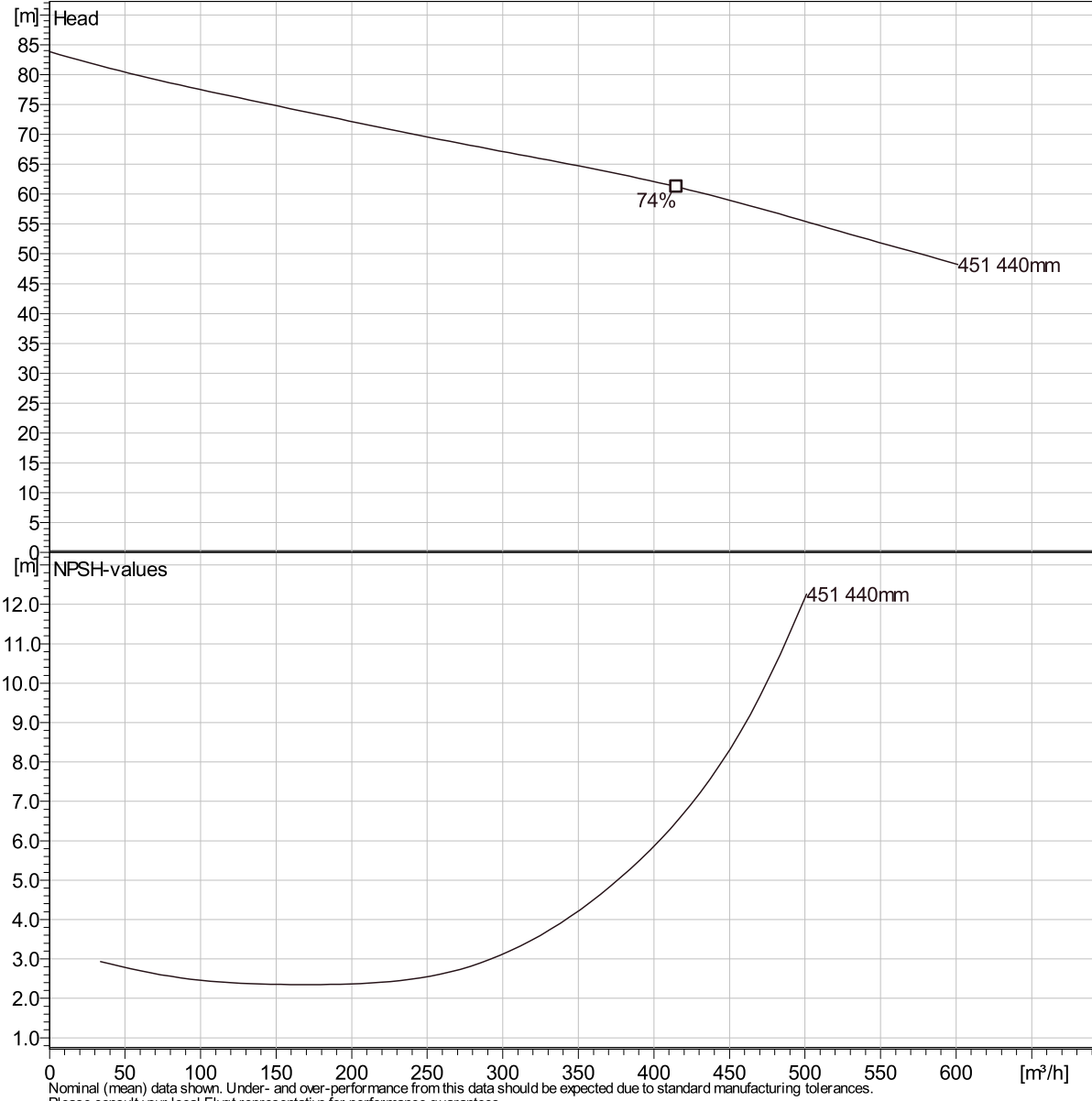
Created on 6/29/2023 Last update 6/29/2023

# NT 3315 HT 3~ 451

## Duty Analysis



Curves according to: Water, pure [100%]; 4°C; 1kg/dm<sup>3</sup>; 1.569mm<sup>2</sup>/s



### Operating characteristics

Pumps / Systems	Flow m <sup>3</sup> /h	Head m	Shaft power kW	Flow m <sup>3</sup> /h	Head m	Shaft power kW	Hydr.eff.	Spec. Energy kWh/l	NPSHre m
-----------------	---------------------------	-----------	-------------------	---------------------------	-----------	-------------------	-----------	-----------------------	-------------

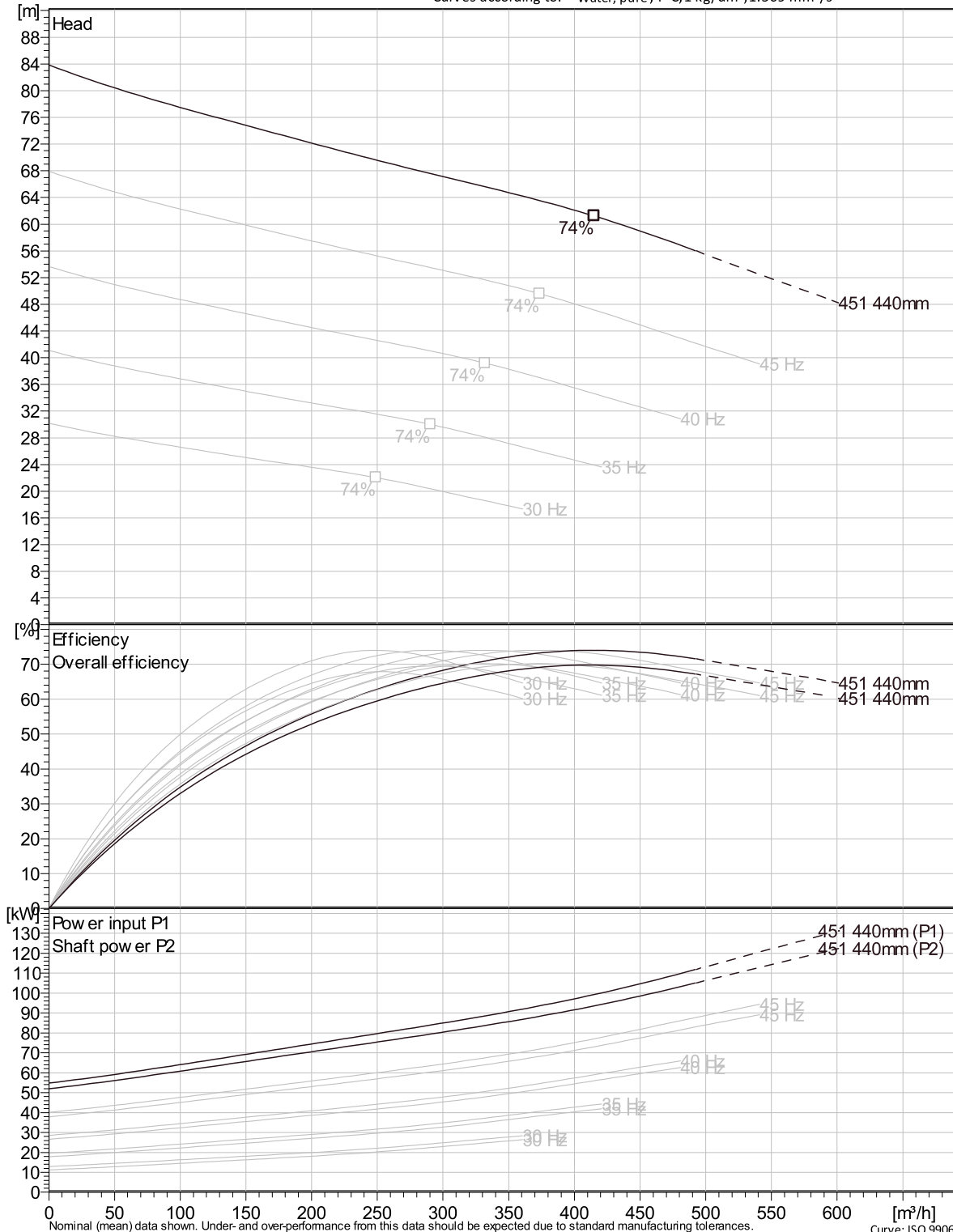
<b>Project</b>		<b>Created by</b>	Vilma Razumaite						
<b>Block</b>	Xylect-20786458	<b>Created on</b>	6/29/2023	<b>Last update</b>	6/29/2023				

# NT 3315 HT 3~ 451

## VFD Curve



Curves according to: Water, pure, 4 °C, 1 kg/dm<sup>3</sup>, 1.569 mm<sup>2</sup>/s

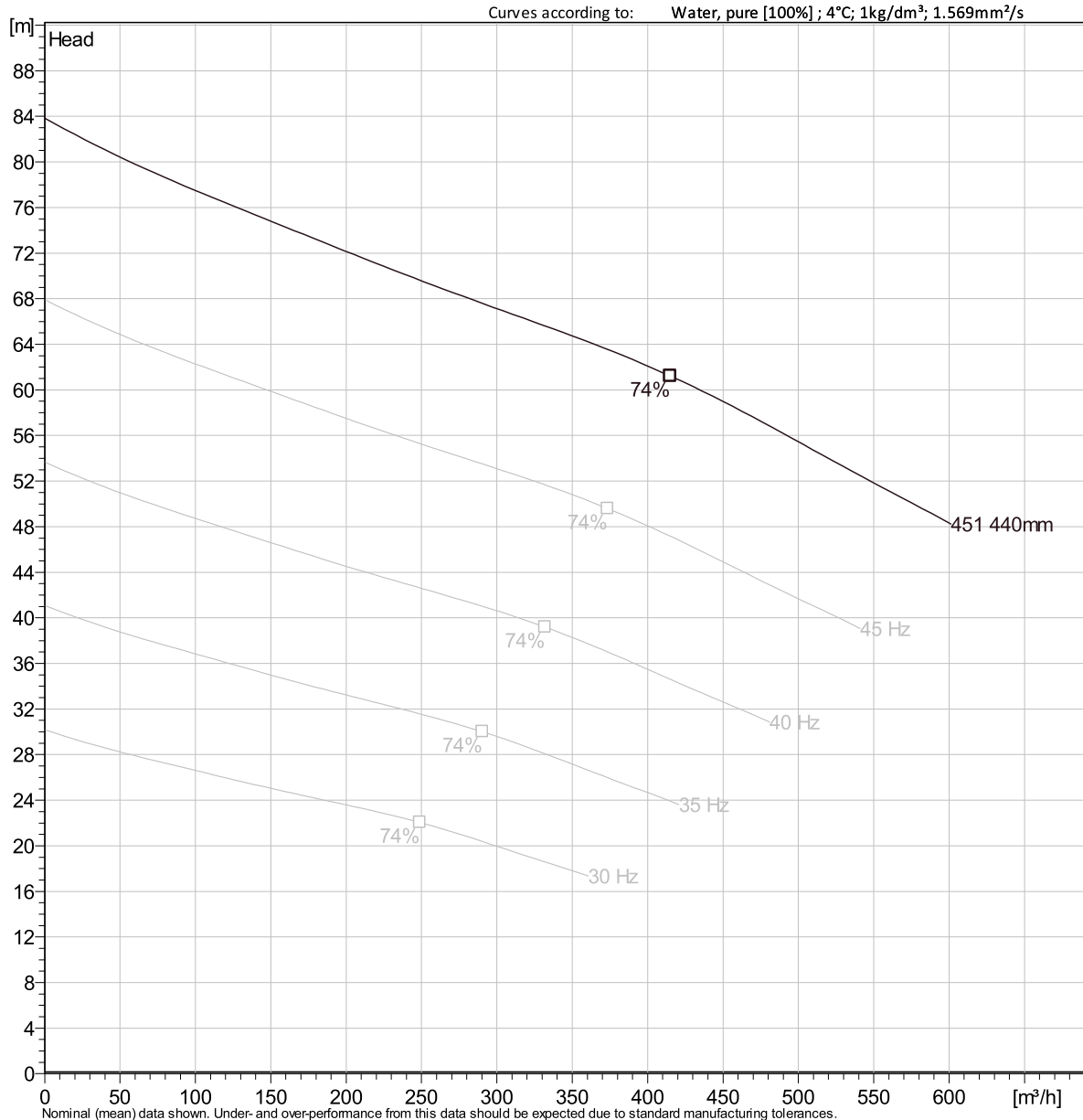


Nominal (mean) data shown. Under- and over-performance from this data should be expected due to standard manufacturing tolerances. Please consult your local Flygt representative for performance guarantees. Curve: ISO 9906

Project	Xylect-20786458	Created by	Vilma Razumaite
Block		Created on	6/29/2023
		Last update	6/29/2023

# NT 3315 HT 3~ 451

## VFD Analysis



Nominal (mean) data shown. Under- and over-performance from this data should be expected due to standard manufacturing tolerances. Please consult your local Flygt representative for performance guarantees.

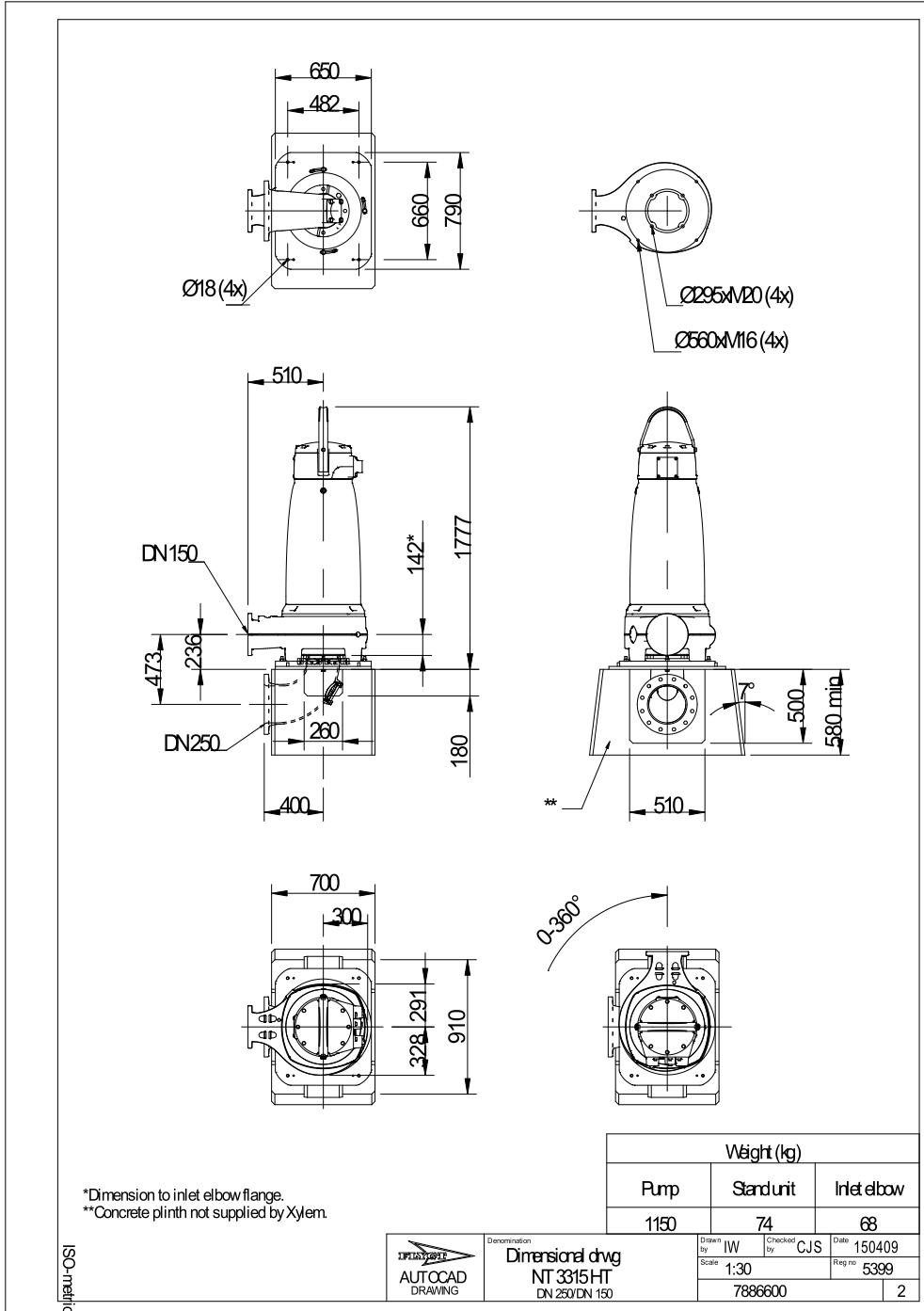
### Operating Characteristics

Pumps / Systems	Frequency	Flow	Head	Shaft power	Flow	Head	Shaft power	Hydr. eff.	Specific energy	NPSHre
		m <sup>3</sup> /h	m	kW	m <sup>3</sup> /h	m	kW		kWh/l	m

<b>Project</b>	Xylect-20786458	<b>Created by</b>	Vilma Razumaite
<b>Block</b>		<b>Created on</b>	6/29/2023
		<b>Last update</b>	6/29/2023

# NT 3315 HT 3~ 451

Dimensional drawing



Project Xylect-20786458  
Block

Created by Vilma Razumaite  
Created on 6/29/2023 Last update

6/29/2023