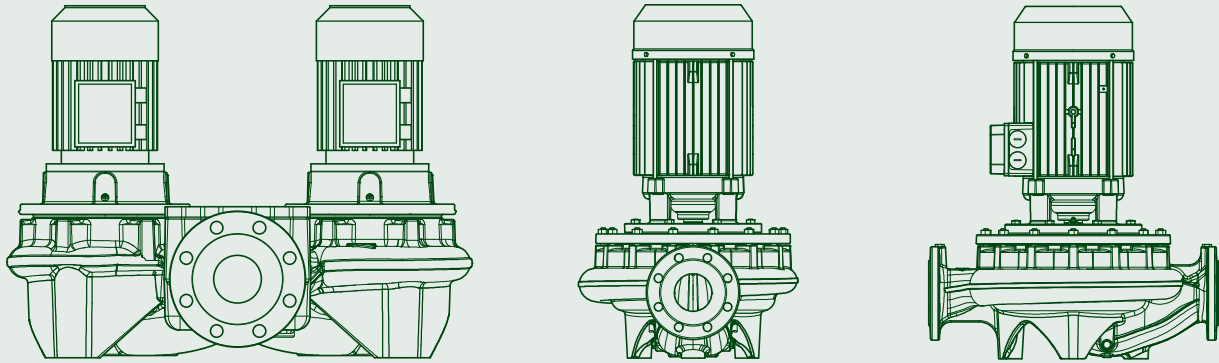


IN-LINE PUMPS



**TECHNICAL
CATALOGUE**

CP / CP-G / DCP / DCP-G

IN-LINE PUMPS



TECHNICAL DATA

Operating range: from 3,6 to 420 m³/h with head of up to 102 metres.

Pumped liquid: clean, free of solids and abrasives, non-viscous, non-aggressive, non-crystallised and chemically neutral, with properties similar to water. Maximum glycol content 30 % (for other glycol percentages contact Technical Support)

Liquid temperature range:

from -10 °C to +130 °C for DN 40 - DN 50

from -10 °C to +140 °C for the remainder of the range

Maximum ambient temperature: +40 °C

Maximum operating pressure:

PN10 : for DN 40 - DN 50

PN16 : Remainder of the range

Flanging: PN 16

Special executions on request: Other voltages and/or frequencies.

Protection: IP 55

Insulation: class F

APPLICATIONS

In-line port circulation pumps, suitable for heating, air conditioning, refrigeration and sanitary water systems. Available in the single and twin versions.

CONSTRUCTION FEATURES

PN 10 - PN 16 flanged suction and delivery ports with threaded holes for control manometers.

Cast iron pump body and motor support, cast iron or technopolymer impeller depending on mode.

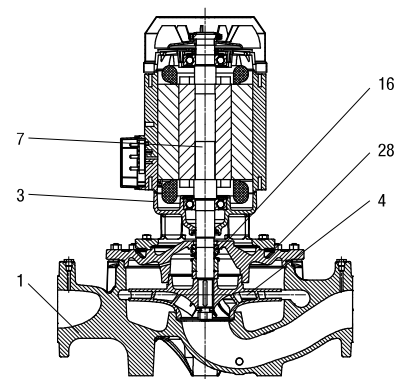
Stainless steel motor shaft.

External ventilation three-phase asynchronous motor. For its protection we recommend the use of remote overload cut-outs, in compliance with current local regulations.

MATERIALS

N.	PARTS*	MATERIALS
1	PUMP BODY	CAST IRON 250 UNI ISO 185
3	SUPPORT	CAST IRON 250 UNI ISO 185
4	IMPELLER	CAST IRON FOR DN 65-80-100-125-150 / DCP Dn 40 - 50 / CP 40-3800T, CP 40-4700T, CP 40-5500T, CP 40-6200T, CP 50-4600T, CP 50-5100T, CP 50-5650T
		TECHNOPOLYMER B FOR CP 40-1900T, CP 40-2300T, CP 40-2700T, CP 40-3500T, CP 50-2200T, CP 50-2600T, CP 50-3100T, CP 50-4100T
7	SHAFT WITH ROTOR	AISI 304 STAINLESS STEEL X5 CrNiS 1809 UNI 6900/71
16	MECHANICAL SEAL	CARBON/GRAPHITE
28	OR RING	EPDM RUBBER

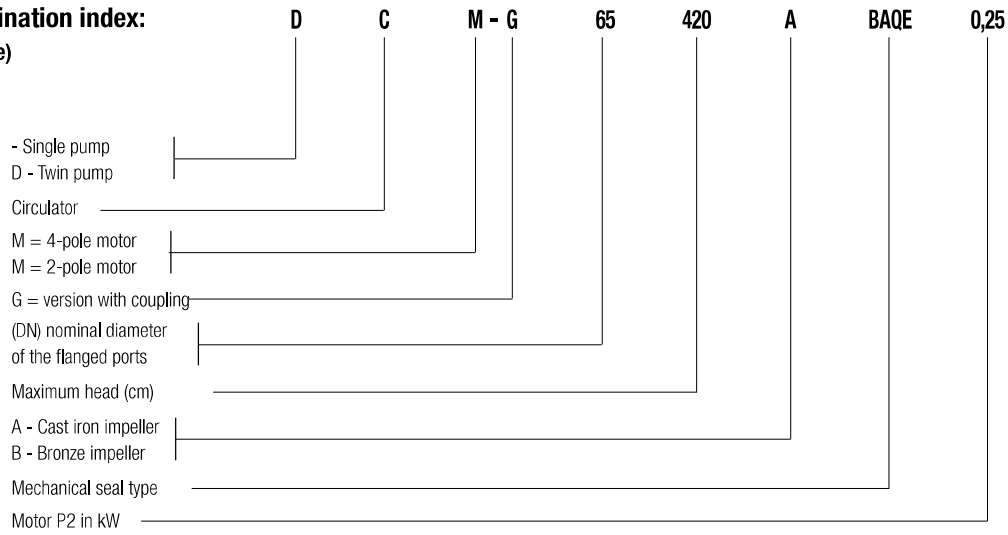
* In contact with the liquid



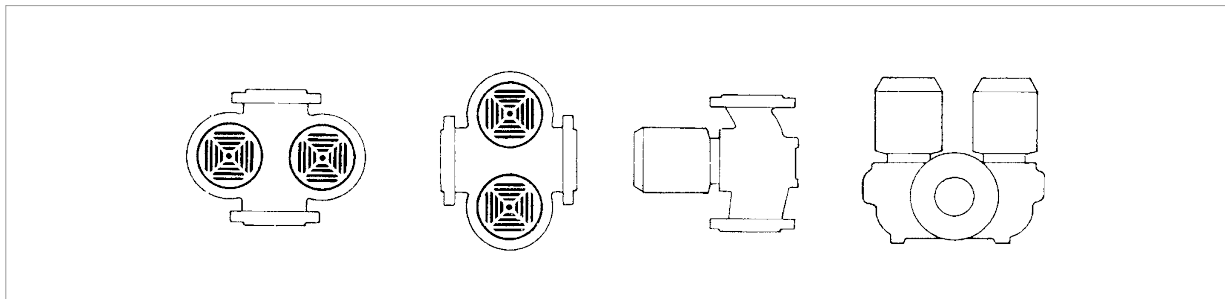
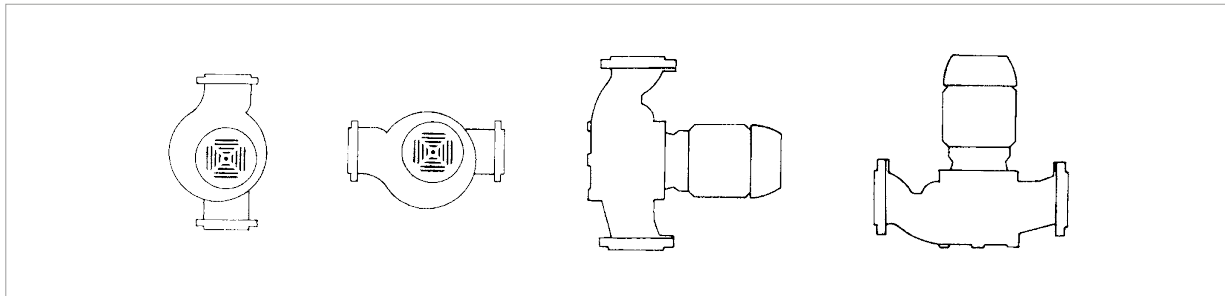
CP / CP-G / DCP / DCP-G

IN-LINE PUMPS

– Denomination index:
(example)



Installation: horizontal or vertical position, provided that the motor is always above the pump.
Vertical installation only for powers exceeding 7,5 kW.



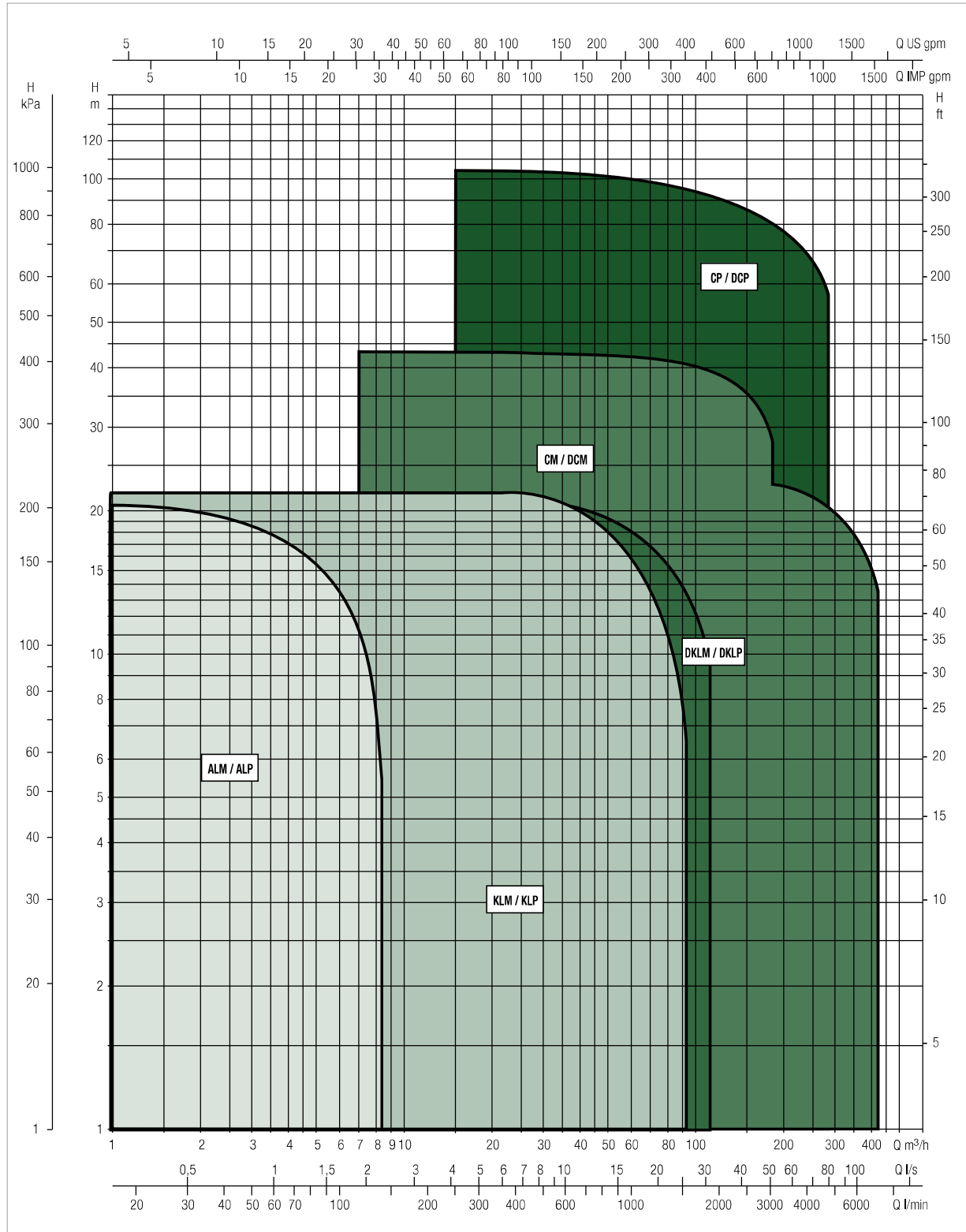
IN-LINE PUMPS

FOR CIRCULATION SYSTEMS

PERFORMANCE RANGE

The performance curves are based on kinematic viscosity values = 1 mm²/s and density equal to 1000 kg/m³. Curve tolerance according to ISO 9906.

GRAPHIC SELECTION TABLE



IN-LINE PUMPS

SELECTION TABLE - CP - 2 POLES

MODEL	Q=m³/h	0	3,6	4,8	6	12	18	24	30	36
	Q=l/min	0	60	80	100	200	300	400	500	600
CP 40/1900 T	H (m)	17,6	17,6	17,4	17	14				
CP 40/2300 T		21,8	21,8	21,3	21	18				
CP 40/2700 T		26,9	26,9	26,7	26,2	23,2				
CP 40/3500 T		34,8	34,9	34,7	34,2	31,7				
CP 40/3800 T					38	35	30			
CP 40/4700 T					47	44	39,5	35		
CP 40/5500 T					55	53	48	42		
CP 40/6200 T					62	59	54	49		

MODEL	Q=m³/h	0	3,6	4,8	6	12	18	24	30	36
	Q=l/min	0	60	80	100	200	300	400	500	600
CP 50/2200 T	H (m)				20	16,5	11			
CP 50/2600 T					25	22	16			
CP 50/3100 T					31	28,5	24			
CP 50/4100 T					40,7	38,5	34,5	27,7		
CP 50/4600 T							44	41,5	37	31
CP 50/5100 T							50	47,5	42,5	37
CP 50/5650 T							55,5	53	49	44

SELECTION TABLE - CP-G - 2 POLES

MODEL	Q=m³/h	0	6	12	18	24	30	36	42	48	54	60	66	72	78	84	90	102	114	120	150		
	Q=l/min	0	100	200	300	400	500	600	700	800	900	1000	1100	1200	1300	1400	1500	1700	1900	2000	2500		
CP-G 65-1470/A/BAQE/1,5	H (m)	14,7	14,5	14,3	13,8	13	11,8	10,5	8,6	7													
CP-G 65-1900/A/BAQE/2,2		19	18,7	18,4	17,8	17	15,9	14,6	13	11													
CP-G 65-2280/A/BAQE/3		22,8	22,5	22,3	22	21,2	20,2	19	17,4	15,5	13,5												
CP-G 65-2640/A/BAQE/4		26,4	26,2	26	25,6	25	24	23	21,5	19,5	17,5	15											
CP-G 65-3400/A/BAQE/5,5		34			34	33,5	32,5	31	29,5	27	24												
CP-G 65-4100/A/BAQE/7,5		41			41	41	40	39	37,5	35,5	33	30	26,5										
CP-G 65-4700/A/BAQE/11		47					45,5	45	44,3	43,3	42	40,8	39	37	35	32,3							
CP-G 65-5500/A/BAQE/15		55					56	55,5	54	53,5	52	51	49	47,5	45,5	43	41						
CP-G 65-6150/A/BAQE/18,5		61,5					62	62	61,5	60,5	59	58	56,5	55	53	51	48,5	43					
CP-G 65-7350/A/BAQE/22		73,5					75	74,5	73,8	73,5	71	68,5	67	65	62,5	60	57	49					
CP-G 65-9250/A/BAQE/30		92,5					94	94	94	93	91	89,4	87,5	85,6	83	81,5	78	72					

CP / CP-G / DCP / DCP-G

IN-LINE PUMPS

SELECTION TABLE - CP-G - 2 POLES

MODEL	Q=m ³ h	0	24	30	36	42	48	54	60	66	72	78	84	90	102	114	120	150	
	Q=l/min	0	400	500	600	700	800	900	1000	1100	1200	1300	1400	1500	1700	1900	2000	2500	
CP-G 80-1400/A/BAQE/2,2	H (m)	14	13,8	13,3	12,9	12,5	12,1	11,4	10,8	10	9,2	8,3	7,5						
CP-G 80-1700/A/BAQE/3		17	16,5	16	15,5	15	14,5	13,7	13	12	11	10	9						
CP-G 80-2050/A/BAQE/4		20,5	20	19,5	19,1	18,5	18	17,5	16,5	15,8	14,8	14	12,5	11,5					
CP-G 80-2400/A/BAQE/5,5		24	23,6	23,5	23,2	22,8	22,2	21,5	21	20	19,1	18,5	17,5	16,5	13,4				
CP-G 80-2770/A/BAQE/7,5		27,7					27,5	27,3	27,1	26,7	25,8	25,6	24,9	24,5	23	21,2	20,1		
CP-G 80-3250/A/BAQE/11		32,5					32,2	32	31,8	31,3	30,2	30	29,2	28,7	27	24,8	23,6		
CP-G 80-4000/A/BAQE/15		40					40,2	40	39,8	39,5	39	38,5	38,2	37,5	36	34,5	33,5	26,9	
CP-G 80-5150/A/BAQE/18,5		51,5					52	52	51,5	50,5	50	49	48,5	47,5	45	42,5	41		
CP-G 80-5650/A/BAQE/22		56,5					58	58	57,5	57	56,5	56	55	54,5	53	51	49		
CP-G 80-6850/A/BAQE/30		68,5					70	70	70	68,5	69	68,8	68,5	67,5	66	64	63	57	
CP-G 80-8600/A/BAQE/37		86					83	82,5	82,5	82	81,5	81	80	79	76,5	73,5	72	60	
CP-G 80-9600/A/BAQE/45		96					92,5	92	92	91,5	91,5	91	90	89,5	87,5	85	83	72,5	
CP-G 80-10200/A/BAQE/55		102				101,6	101,5	101,3	101,1	100,7	100,3	99,7	99,1	98,3	97,4	95,4	92,9	91,5	83,2

MODEL	Q = m ³ h	0	36	42	48	54	60	66	72	78	84	90	102	114	120	150	180	210	240	270	300	330	360	390	420
	Q = l/min	0	600	700	800	900	1000	1100	1200	1300	1400	1500	1700	1900	2000	2500	3000	3500	4000	4500	5000	5500	6000	6500	7000
CP-G 100-1600/A/BAQE/4	H (m)	16	15	14,6	14,2	13,7	13,3	12,8	12,3	11,7	11	10	9,3	8											
CP-G 100-1950/A/BAQE/5,5		19,5	19	18,9	18,7	18,4	18,1	17,5	17,2	16,9	16,5	15,8	14,5	13	12										
CP-G 100-2350/A/BAQE/7,5		23,5	23,1	23	22,8	22,6	22,5	22	21,6	21,1	20,7	20,2	19	17,5	14,8	12									
CP-G 100-2400/A/BAQE/11		24										22	21,4	20,4	20	17,4	16,8	12							
CP-G 100-3050/A/BAQE/15		30,5										29	28,4	27,5	27	24,5	21,3	18,3							
CP-G 100-3550/A/BAQE/18,5		35,5										34,3	33,6	32,6	32,3	29,8	26,8	23,6	20						
CP-G 100-3850/A/BAQE/22		38,5										37,2	36,8	36	35,8	33,5	30,8	27,5	24						
CP-G 100-4800/A/BAQE/30		48										48,5	48,2	47,5	47	44,7	41	36	29						
CP-G 100-5600/A/BAQE/37		56										58	57,5	57,2	57	55	52	48	43						
CP-G 100-6300/A/BAQE/45		63										65,5	65	64	63	61,9	58,9	55,5	50,6	44,2					
CP-G 100-8300/A/BAQE/55		83										83,7	83,7	83,7	83,2	80,7	77,3	72,8	66,4	59,5					

MODEL	Q = m ³ h	0	36	42	48	54	60	66	72	78	84	90	102	114	120	150	180	210	240	270	300	330	360	390	420
	Q = l/min	0	600	700	800	900	1000	1100	1200	1300	1400	1500	1700	1900	2000	2500	3000	3500	4000	4500	5000	5500	6000	6500	7000
CP-G 125-4750/A/BAQE/37	H (m)	46,5														45	44	42	39	37	34,5	31	28		
CP-G 125-5300/A/BAQE/45		51,5														51	50	48,5	46	44	42	39	35	31,5	
CP-G 125-5800/A/BAQE/55		57,5														57	56	55	53	51	49	46	43	39	36

CP / CP-G / DCP / DCP-G

IN-LINE PUMPS

SELECTION TABLE - DPC - 2 POLES

MODEL	Q=m ³ h	6	7,5	9	10,5	12	13,5	15	18	21	24	27	30	36	42	48	54	60	75	90	105	120	135		
	Q=l/min	100	125	150	175	200	225	250	300	350	400	450	500	600	700	800	900	1000	1250	1500	1750	2000	2250		
DCP 40/1250 T	H (m)	12,5	11,5	10,5	9,5	8,1	6,8	5,2																	
DCP 40/1650 T		16,5	15,5	14,5	13,5	12,3	11	9,5	6																
DCP 40/2050 T		20,5	20	19	18	17	16	15	11,5	7,5															
DCP 40/2450 T		24,5	24	23,5	23	22	21	20	16,5	13															

MODEL	Q=m ³ h	6	7,5	9	10,5	12	13,5	15	18	21	24	27	30	36	42	48	54	60	75	90	105	120	135	
	Q=l/min	100	125	150	175	200	225	250	300	350	400	450	500	600	700	800	900	1000	1250	1500	1750	2000	2250	
DCP 50/1550 T	H (m)							15,5	15	14,1	13	11,8	10,5	7										
DCP 50/1900 T								19	18,5	17,5	16,5	15,5	14,5	10,5										
DCP 50/2450 T								24,5	24	23,5	23	22	20,5	17										
DCP 50/3000 T								30	29	28	26,5	25	23	18										
DCP 50/3650 T								36,5	35,5	34,5	33,5	32,5	31	27										

SELECTION TABLE - DPC-G - 2 POLES

MODEL	Q=m ³ h	0	6	12	18	24	30	36	42	48	54	60	66	72	78	84	90	102	
	Q=l/min	0	100	200	300	400	500	600	700	800	900	1000	1100	1200	1300	1400	1500	1700	
DCP-G 65-1470/A/BAQE/1,5	H (m)	14,4	14,2	13,8	13,1	12	10,6	9	7	5,3									
DCP-G 65-1900/A/BAQE/2,2		18,6	18,3	17,8	16,9	15,7	14,2	12,5	10,5	8,3									
DCP-G 65-2280/A/BAQE/3		22,3			21,1	19,9	18,4	16,8	14,7	12,5	10,2								
DCP-G 65-2640/A/BAQE/4		25,9			24,6	23,7	22,2	20,7	18,8	16,4	14	11,4							
DCP-G 65-3400/A/BAQE/5,5		33,3			32,5	31,4	29,7	27,4	25	21,7	18,2								
DCP-G 65-4100/A/BAQE/7,5		40,2			39,6	39	37,4	35,7	33,4	30,7	27,5	23,9	20,1						
DCP-G 65-4700/A/BAQE/11		46,4					44,3	43,6	42,6	41,3	39,6	38,1	35,9	33,6	31,3	28,4			
DCP-G 65-5500/A/BAQE/15		54,3					54,7	53,9	52,1	51,2	49,4	48	45,6	43,7	41,3	38,4	36,1		
DCP-G 65-6150/A/BAQE/18,5		60,8					60,7	60,4	59,7	58,4	56,5	55,2	53,3	51,4	49	46,7	43,8	37,8	
DCP-G 65-7350/A/BAQE/22		72,6					73,4	72,6	71,6	70,9	68	65,1	63,2	60,7	57,8	54,9	51,5	43,1	
DCP-G 65-9250/A/BAQE/30		91,4					92	91,6	91,2	89,7	87,2	85	82,5	80	76,8	74,6	70,5	63,3	

SELECTION TABLE - DCP-G - 2 POLES

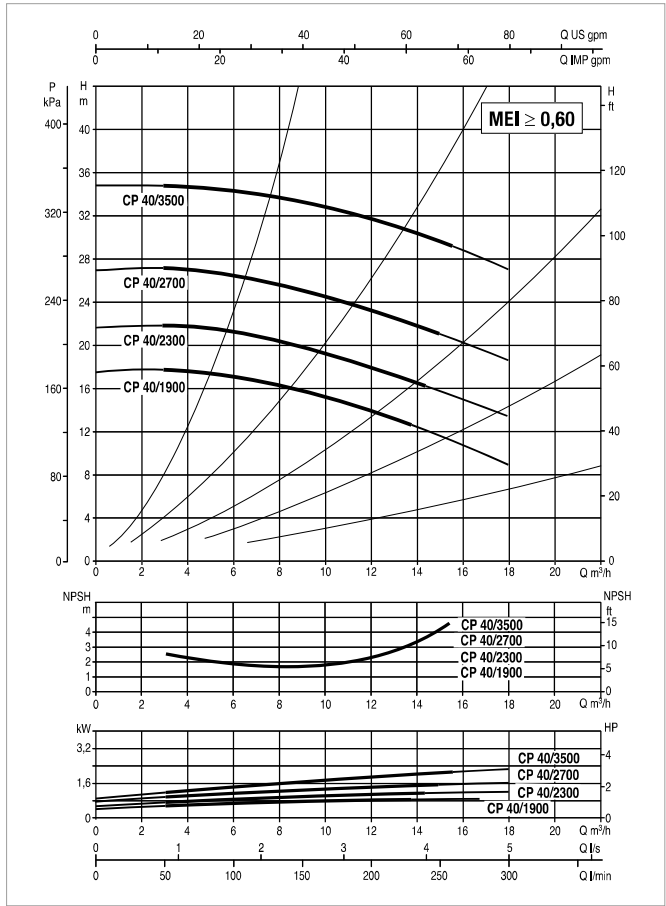
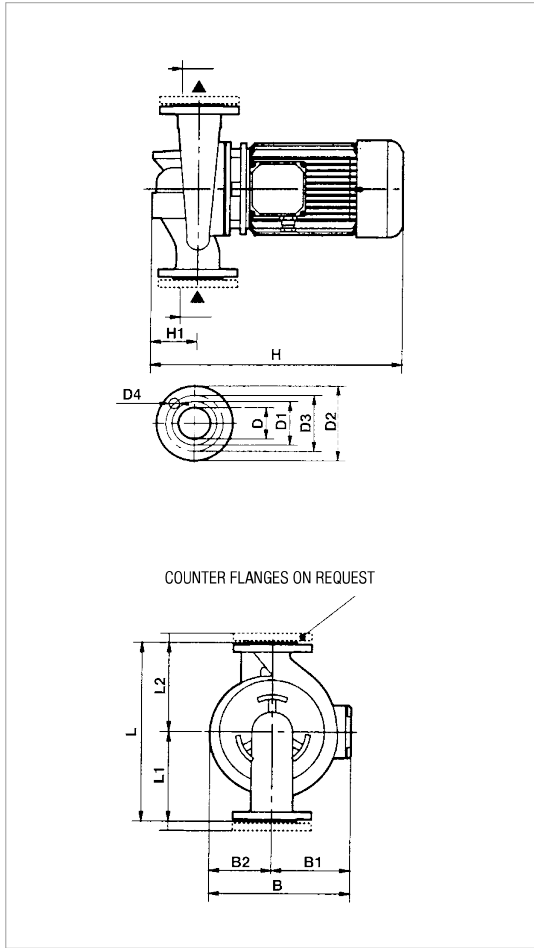
MODEL	Q=m³h	0	24	30	36	42	48	54	60	66	72	78	84	90	102	114	120	150	
	Q=l/min	0	400	500	600	700	800	900	1000	1100	1200	1300	1400	1500	1700	1900	2000	2500	
DCP-G 80-1400/A/BAQE/2,2	H (m)	13,7	14,3	13,7	13	12,3	11,4	10,3	9,1	7,8	6,5	5,2	4						
DCP-G 80-1700/A/BAQE/3		16,7	17,1	16,5	15,7	14,7	13,7	12,3	11	9,4	7,8	6,2	4,8						
DCP-G 80-2050/A/BAQE/4		20,1	20,8	20,1	19,5	18,4	17,4	16,2	14,6	13,1	11,3	9,7	7,7	6,1					
DCP-G 80-2400/A/BAQE/5,5		23,5	24,5	24,4	23,9	23,1	22,1	20,8	19,6	17,9	16,3	14,8	13	11,2	7,1				
DCP-G 80-2770/A/BAQE/7,5		27,1					26,6	26	25,3	24,3	22,8	21,9	20,5	19,3	16,2	13	11,3		
DCP-G 80-3250/A/BAQE/11		31,9					31,2	30,5	29,7	28,5	26,7	25,6	24	22,6	19,1	15,2	13,2		
DCP-G 80-4000/A/BAQE/15		39,2					39,7	39,1	38,5	37,7	36,7	35,6	34,6	33,2	30,1	26,9	25,1	15,1	
DCP-G 80-5150/A/BAQE/18,5		48,3					48,9	48,6	47,7	46,3	45,3	43,8	42,7	41,1	37,4	33,6	31,5		
DCP-G 80-5650/A/BAQE/22		53					54,5	54,2	53,2	52,3	51,2	50,1	48,4	47,2	44	40,3	37,7		
DCP-G 80-6850/A/BAQE/30		64,3					66,3	66,1	65,8	64,1	64,1	63,5	62,7	61,2	58,5	55,2	53,5	43,8	
DCP-G 80-8600/A/BAQE/37		86,4					85,3	84,9	85,1	84,7	84,3	83,8	82,9	81,9	79,3	76,2	74,6	61,8	
DCP-G 80-9600/A/BAQE/45		96,4					95,1	94,7	94,9	94,5	94,6	94,2	93,2	92,8	90,7	88,1	86	74,7	
DCP-G 80-10200/A/BAQE/55		102,4				103,9	104,1	104,1	104,1	103,9	103,6	103,1	102,6	101,8	101	98,9	96,3	94,8	85,7

MODEL	Q=m³h	0	36	42	48	54	60	66	72	78	84	90	102	114	120	150	180	210	240	270	
	Q=l/min	0	600	700	800	900	1000	1100	1200	1300	1400	1500	1700	1900	2000	2500	3000	3500	4000	4500	
DCP-G 100-1600/A/BAQE/4	H (m)	16	15,8	15,2	14,5	13,6	12,8	11,8	10,8	9,6	8,4	7,3	5,1	3							
DCP-G 100-1950/A/BAQE/5,5		19,5	20,1	19,8	19,2	18,5	17,7	16,5	15,5	14,5	13,3	11,8	9	6	4,5						
DCP-G 100-2350/A/BAQE/7,5		23,5	24,5	24,4	24	23,6	23,1	22,2	21,4	20,4	19,4	18,3	15,7	12,9	11,7	4,5				194	
DCP-G 100-2400/A/BAQE/11		23,6											21,9	21	19,7	19,1	15,5	13,4	8,2		238
DCP-G 100-3050/A/BAQE/15		30											28,9	27,9	26,5	25,8	21,8	17	12,5		313
DCP-G 100-3550/A/AQE/18,5		34,9											34,6	33,5	32,1	31,6	27,8	23,3	18,5	13,7	329
DCP-G 100-3850/A/BAQE/22		37,9											37,2	36,8	36	35,8	33,5	30,8	27,5	24	402
DCP-G 100-4800/A/BAQE/30		52,7											52,1	51,6	50,7	50	47,1	42,7	37	29,3	496
DCP-G 100-5600/A/BAQE/37		61,5											62,4	61,6	61	60,7	57,9	54,1	49,3	43,5	697
DCP-G 100-6300/A/BAQE/45		68,1											70,1	69,3	67,9	66,7	62,7	57,1	49,5		1062
DCP-G 100-8300/A/BAQE/55		77,8											79	79	79	78,5	76,1	72,7	68,2	61,8	1388

MODEL	Q=m³h	0	150	180	210	240	270	300	330	360	390	420
	Q=l/min	0	2500	3000	3500	4000	4500	500	5500	6000	6500	7000
DCP-G 125-4750/A/BAQE/37	H (m)	46,5	44,2	42	39	36	31	26	20	17		
DCP-G 125-5300/A/BAQE/45		52,2	50,3	48,4	46	42,4	39	34	29	22,4	16	
DCP-G 125-5800/A/BAQE/55		57,5	56	54	52	50	46	42	38	33	27	22

CP 40 2 POLES - IN-LINE PUMPS

Pumped liquid temperature range: from -10 °C to +130 °C - Maximum ambient temperature: +40 °C



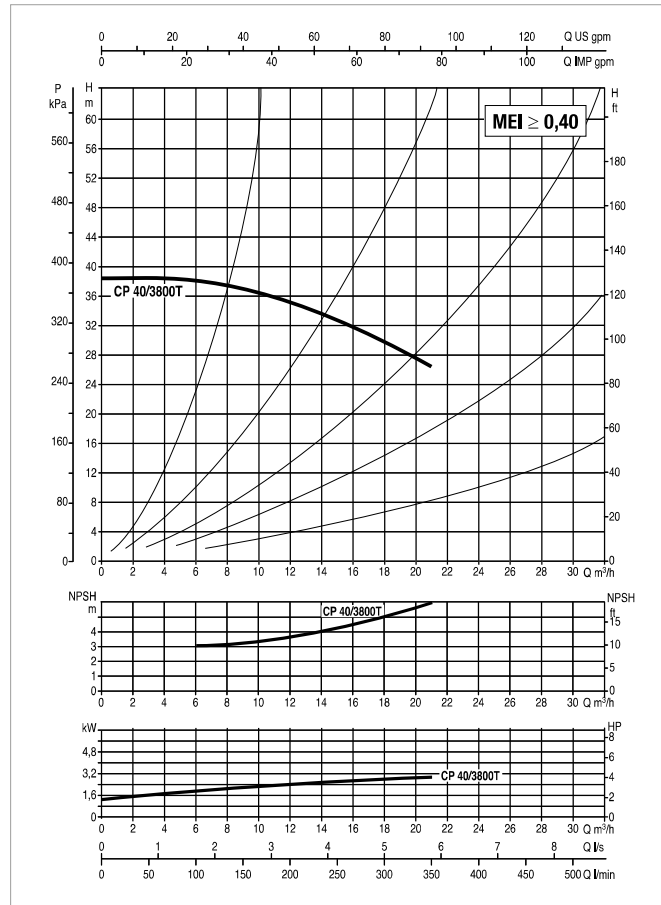
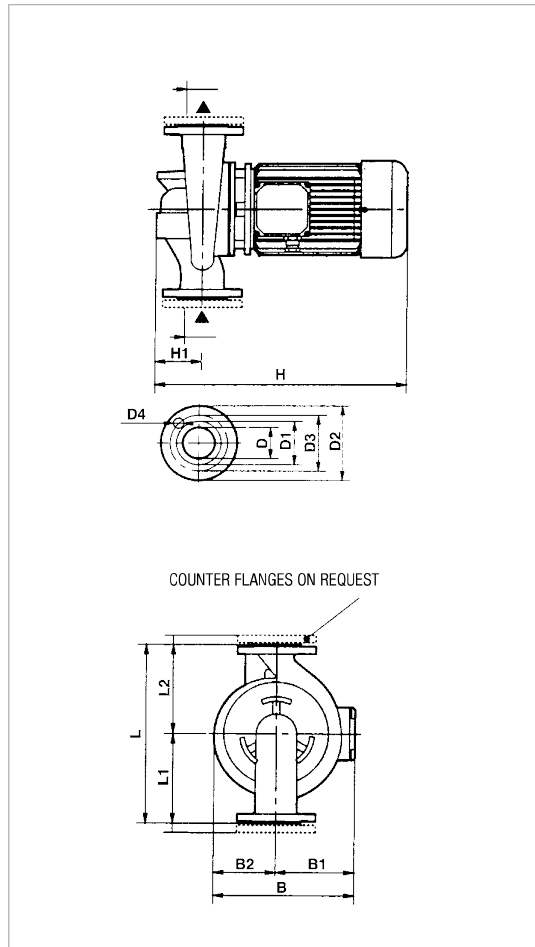
The performance curves are based on kinematic viscosity values = 1 mm²/s and density equal to 1000 kg/m³. Curve tolerance according to ISO 9906.

MODEL	CENTRE DISTANCE	PUMP CONNECTIONS	ELECTRICAL DATA							
			POWER INPUT 50 Hz	n r.p.m.	P1 MAX KW	P2 NOMINAL		In A		MOTOR TYPE
						kW	HP	230 V	400 V	
CP 40/1900 T	390	DN 40	3 x 230 - 400 V ~	2910	1,1	0,75	1	4,3	2,5	IE3
CP 40/2300 T	390	DN 40	3 x 230 - 400 V ~	2870	1,5	1,1	1,5	5,2	3	IE3
CP 40/2700 T	390	DN 40	3 x 230 - 400 V ~	2850	2	1,5	2	6,4	3,7	IE3
CP 40/3500 T	390	DN 40	3 x 230 - 400 V ~	2880	2,85	2,21	3	8,6	5	IE3

MODEL	B	B1	B2	D	D1	D2	D3	D4	no. of holes	H	H1	L	L1	L2	PACKING DIMENSIONS			VOL. (m ³)	WEIGHT Kg
															L/A	L/B	H		
CP 40/1900 T	231	118	113	40 PN 16	88	150	110	14	4	453	95	390	200	190	680	330	580	0,13	41
CP 40/2300 T	231	118	113	40 PN 16	88	150	110	14		453	95	390	200	190	680	330	580	0,13	41
CP 40/2700 T	231	118	113	40 PN 16	88	150	110	14		453	95	390	200	190	680	330	580	0,13	40
CP 40/3500 T	231	118	113	40 PN 16	88	150	110	14		453	95	390	200	190	680	330	580	0,13	44

CP 40 2 POLES - IN-LINE PUMPS

Pumped liquid temperature range: from -10 °C to +130 °C - Maximum ambient temperature: +40 °C



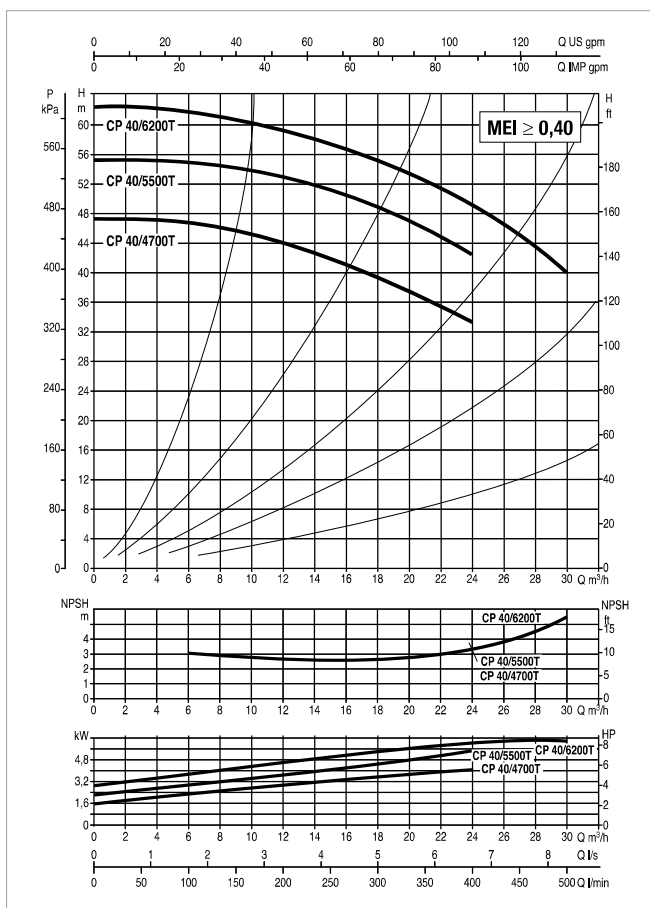
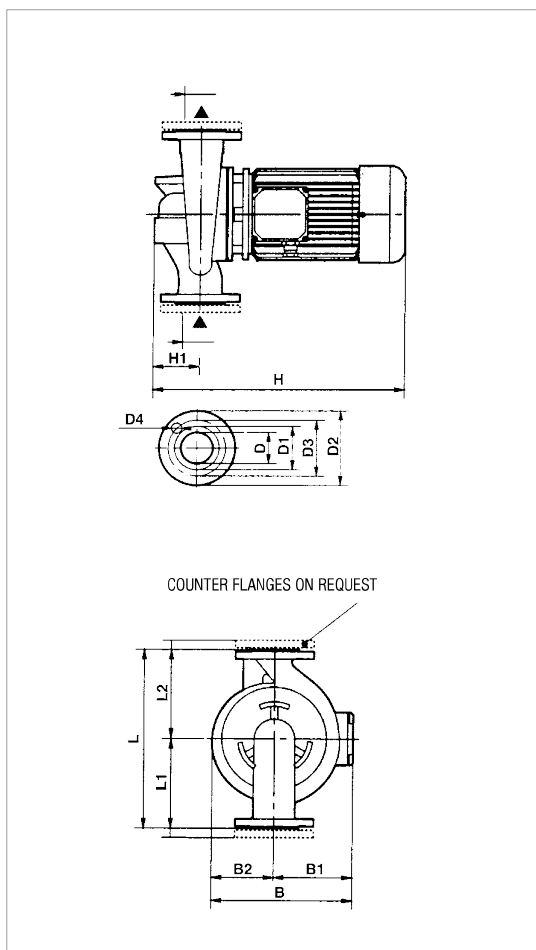
The performance curves are based on kinematic viscosity values = 1 mm²/s and density equal to 1000 kg/m³. Curve tolerance according to ISO 9906.

MODEL	CENTRE DISTANCE	PUMP CONNECTIONS	ELECTRICAL DATA							
			POWER INPUT 50 Hz	n r.p.m.	P1 MAX KW	P2 NOMINAL		In A		MOTOR TYPE
						KW	HP	230 V	400 V	
CP 40/3800 T	320	DN 40	3 x 230 - 400 V ~	2900	3,54	3	4	3	4	E3

MODEL	B	B1	B2	D	D1	D2	D3	D4	no. of holes	H	H1	L	L1	L2	PACKING DIMENSIONS			VOL. (m ³)	WEIGHT Kg
															L/A	L/B	H		
CP 40/3800 T	257	149	108	40 PN 6	88	150	110	14	4	485	100	320	170	150	450	270	465	0,056	37

CP 40 2 POLES - IN-LINE PUMPS

Pumped liquid temperature range: from -10 °C to +130 °C - Maximum ambient temperature: +40 °C



The performance curves are based on kinematic viscosity values = 1 mm²/s and density equal to 1000 kg/m³. Curve tolerance according to ISO 9906.

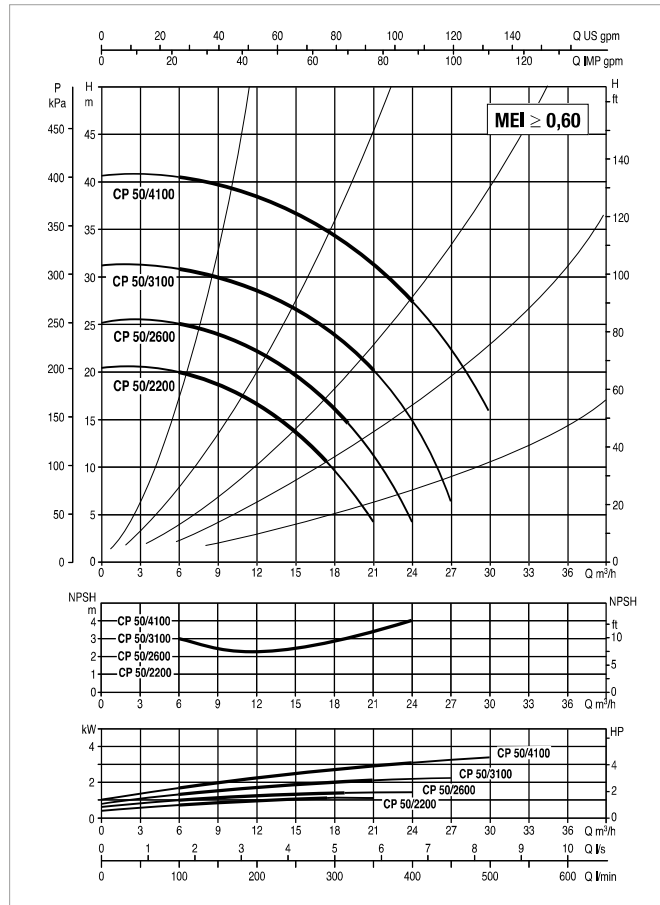
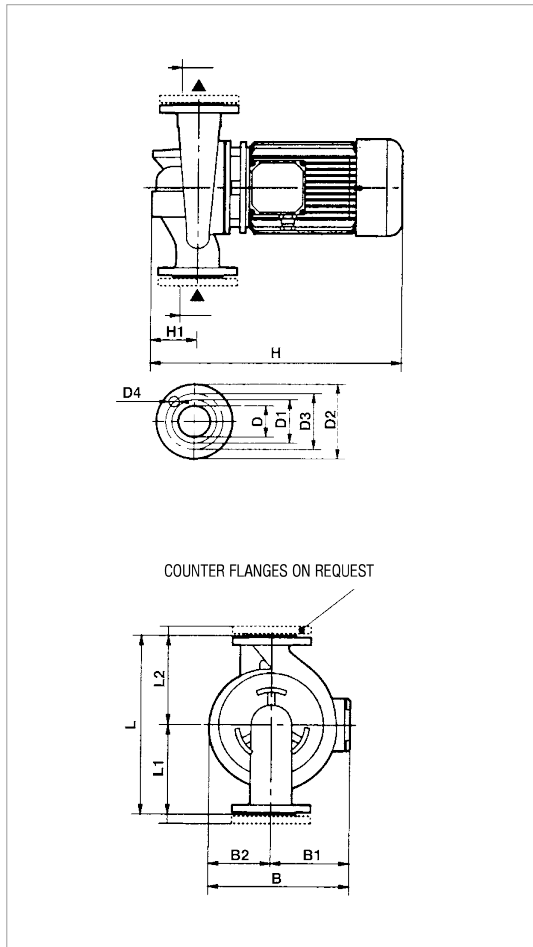
MODEL	CENTRE DISTANCE	PUMP CONNECTIONS	ELECTRICAL DATA							
			POWER INPUT 50 Hz	n r.p.m.	P1 MAX KW	P2 NOMINAL		In A		MOTOR TYPE
						kW	HP	230 V	400 V	
CP 40/4700 T	380	DN 40	3 x 230 - 400 V ~	2900	4,87	4	5,5	4	5,5	E3
CP 40/5500 T	380	DN 40	3 x 400 V ~ ¹	2900	6,57	5,5	7,5	-	10,6	E3
CP 40/6200 T	380	DN 40	3 x 400 V ~ ¹	2900	9,18	7,5	10	-	14,4	E3

¹ star start-up possible (A)

MODEL	B	B1	B2	D	D1	D2	D3	D4	no. of holes	H	H1	L	L1	L2	PACKING DIMENSIONS			VOL. (m ³)	WEIGHT Kg
															L/A	L/B	H		
CP 40/4700 T	286	159	127	40 PN 6	88	150	110	14	4	535	100	380	200	180	450	270	465	0,056	50
CP 40/5500 T	286	159	127	40 PN 6	88	150	110	14		535	100	380	200	180	450	270	465	0,056	55
CP 40/6200 T	286	159	127	40 PN 6	88	150	110	14		535	100	380	200	180	450	270	465	0,056	56

CP 50 2 POLES - IN-LINE PUMPS

Pumped liquid temperature range: from -10 °C to +140 °C - Maximum ambient temperature: +40 °C



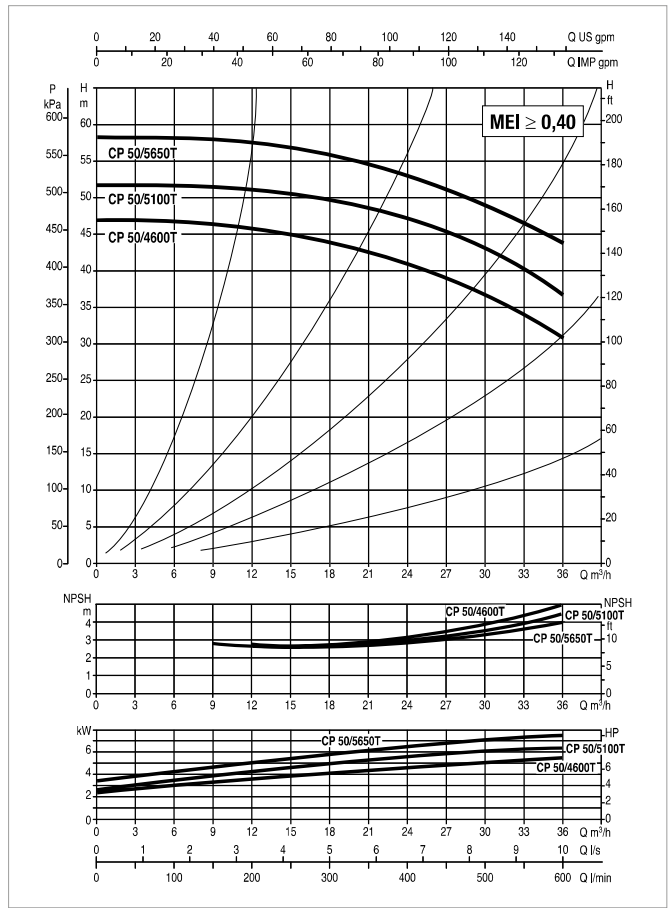
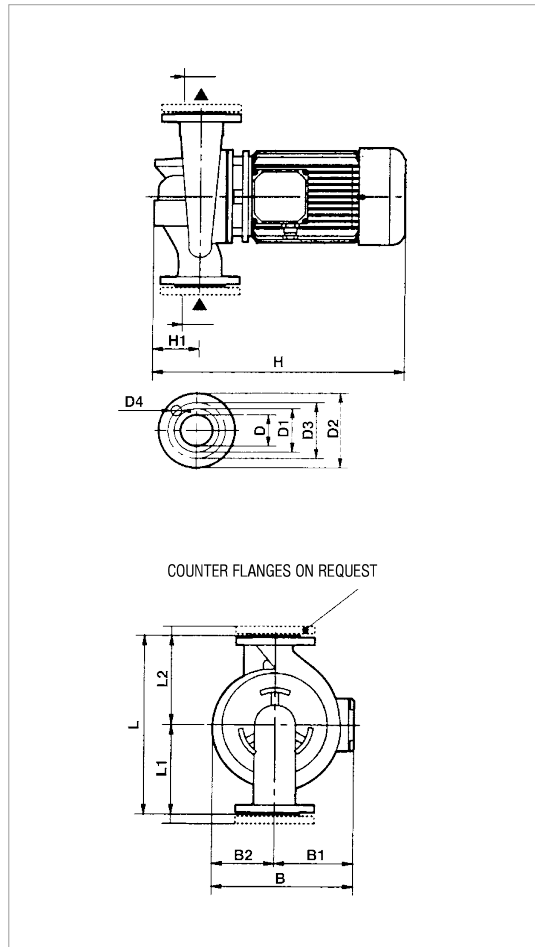
The performance curves are based on kinematic viscosity values = 1 mm²/s and density equal to 1000 kg/m³. Curve tolerance according to ISO 9906.

MODEL	CENTRE DISTANCE	PUMP CONNECTIONS	ELECTRICAL DATA							
			POWER INPUT 50 Hz	n r.p.m.	P1 MAX KW	P2 NOMINAL		In A		MOTOR TYPE
						KW	HP	230 V	400 V	
CP 50/2200 T	425	DN 50	3 x 230 - 400 V ~	2870	1,6	1,1	1,5	5,4	3,1	IE3
CP 50/2600 T	425	DN 50	3 x 230 - 400 V ~	2860	2	1,5	2	6,5	3,8	IE3
CP 50/3100 T	425	DN 50	3 x 230 - 400 V ~	2870	2,8	2,2	3	8,6	5	IE3
CP 50/4100 T	425	DN 50	3 x 230 - 400 V ~	2910	4,1	4	5,5	13,5	7,8	IE3

MODEL	B	B1	B2	D	D1	D2	D3	D4	no. of holes	H	H1	L	L1	L2	PACKING DIMENSIONS			VOL (m ³)	WEIGHT Kg
															L/A	L/B	H		
															CP 50/2200 T	233	120		
CP 50/2600 T	233	120	113	50 PN 16	102	165	125	18	463	105	425	225	200	680	330	580	0,13	39	
CP 50/3100 T	233	120	113	50 PN 16	102	165	125	18	537	105	425	225	200	680	330	580	0,13	36	
CP 50/4100 T	233	120	113	50 PN 16	102	165	125	18	537	105	425	225	200	680	330	580	0,13	36	

CP 50 2 POLES - IN-LINE PUMPS

Pumped liquid temperature range: from -10 °C to +140 °C - Maximum ambient temperature: +40 °C



The performance curves are based on kinematic viscosity values = 1 mm²/s and density equal to 1000 kg/m³. Curve tolerance according to ISO 9906.

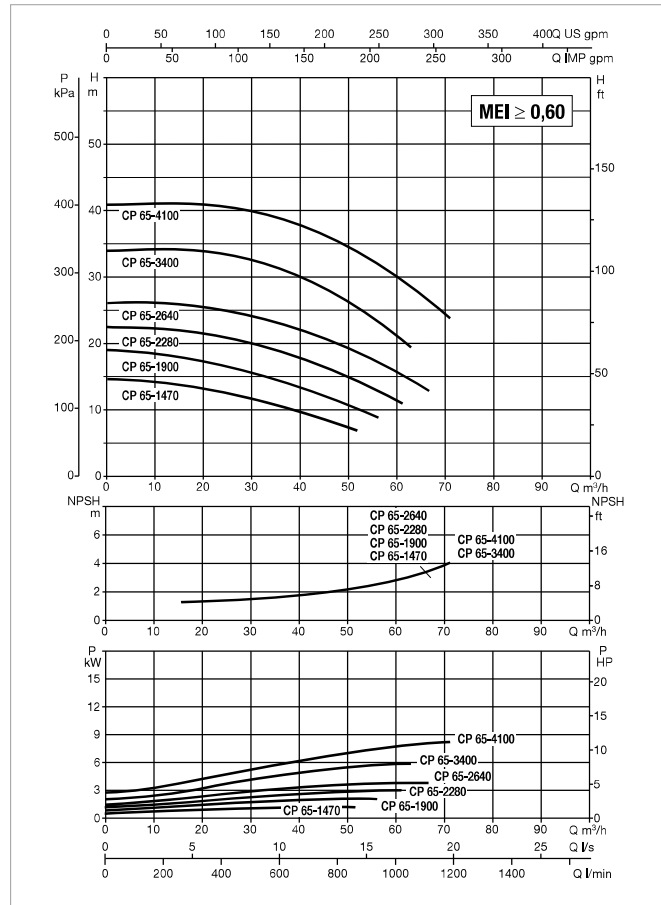
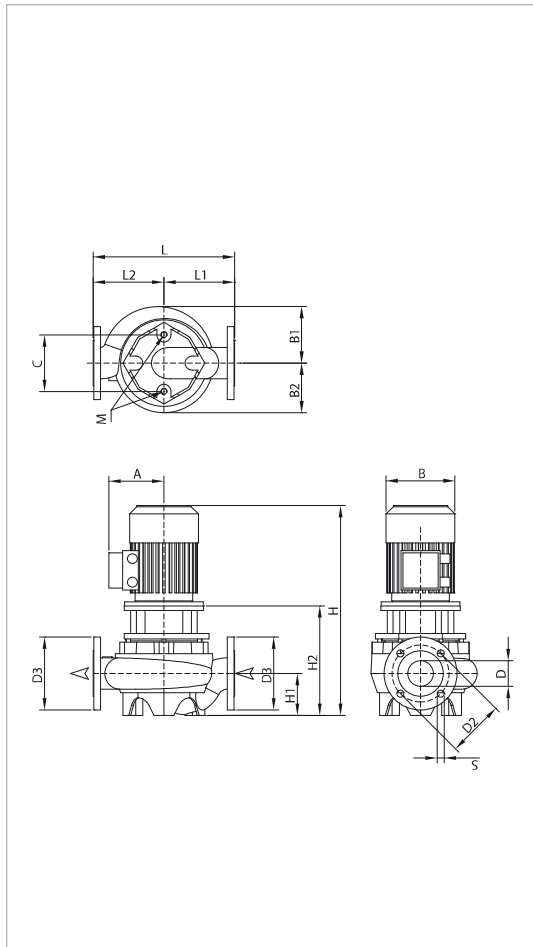
MODEL	CENTRE DISTANCE	PUMP CONNECTIONS	ELECTRICAL DATA						
			POWER INPUT 50 Hz	n r.p.m.	P1 MAX KW	P2 NOMINAL		In A 400 V	MOTOR TYPE
						kW	HP		
CP 50/4600 T	400	DN 50	3 x 400 V ~ ¹	2900	6,57	5,5	7,5	10,6	IE3
CP 50/5100 T	400	DN 50	3 x 400 V ~ ¹	2900	9,18	7,5	10	14,4	IE3
CP 50/5650 T	400	DN 50	3 x 400 V ~ ¹	2900	9,18	7,5	10	14,4	IE3

¹ star start-up possible (Δ)

MODEL	B	B1	B2	D	D1	D2	D3	D4	no. of holes	H	H1	L	L1	L2	PACKING DIMENSIONS			VOL. (m ³)	WEIGHT Kg
															L/A	L/B	H		
CP 50/4600 T	290	159	131	50 PN 10	102	165	125	18	4	545	110	400	220	180	520	320	535	0,089	46
CP 50/5100 T	290	159	131	50 PN 10	102	165	125	18	4	545	110	400	220	180	520	320	535	0,089	46,1
CP 50/5650 T	290	159	131	50 PN 10	102	165	125	18	4	545	110	400	220	180	520	320	535	0,089	57,9

CP-G 65 2 POLES - IN-LINE PUMPS

Pumped liquid temperature range: from -10 °C to +140 °C - Maximum ambient temperature: +40 °C



The performance curves are based on kinematic viscosity values = 1 mm²/s and density equal to 1000 kg/m³, Curve tolerance according to ISO 9906.

MODEL	CENTRE DISTANCE	PUMP CONNECTIONS	ELECTRICAL DATA							MOTOR TYPE	MOTOR SIZE	I st. A
			POWER INPUT 50 Hz	n r.p.m.	P1 MAX KW	P2 NOMINAL		In A				
						KW	HP	230 V	400 V			
CP-G 65-1470/A/BAQE/1,5	360	DN 65	3x230-400 V ~	2883	1,9	1,5	2	5,2	3	IE3	MEC 90S	43,6/25,2
CP-G 65-1900/A/BAQE/2,2	360	DN 65	3x230-400 V ~	2872	3,1	2,2	3	7,97	4,6	IE3	MEC 90L	73,3/42,3
CP-G 65-2280/A/BAQE/3	360	DN 65	3 x 400 V ~ ¹	2882	3,4	3	4	-	5,6	IE3	MEC 100L	49,3
CP-G 65-2640/A/BAQE/4	360	DN 65	3 x 400 V ~ ¹	2910	4,7	4	5,5	-	8,2	IE3	MEC 112M	89,3
CP-G 65-3400/A/BAQE/5,5	360	DN 65	3 x 400 V ~ ¹	2913	6,6	5,5	7,5	-	10,2	IE3	MEC 132S	114,2
CP-G 65-4100/A/BAQE/7,5	360	DN 65	3 x 400 V ~ ¹	2900	8,6	7,5	10	-	14,4	IE3	MEC 132S	113,9

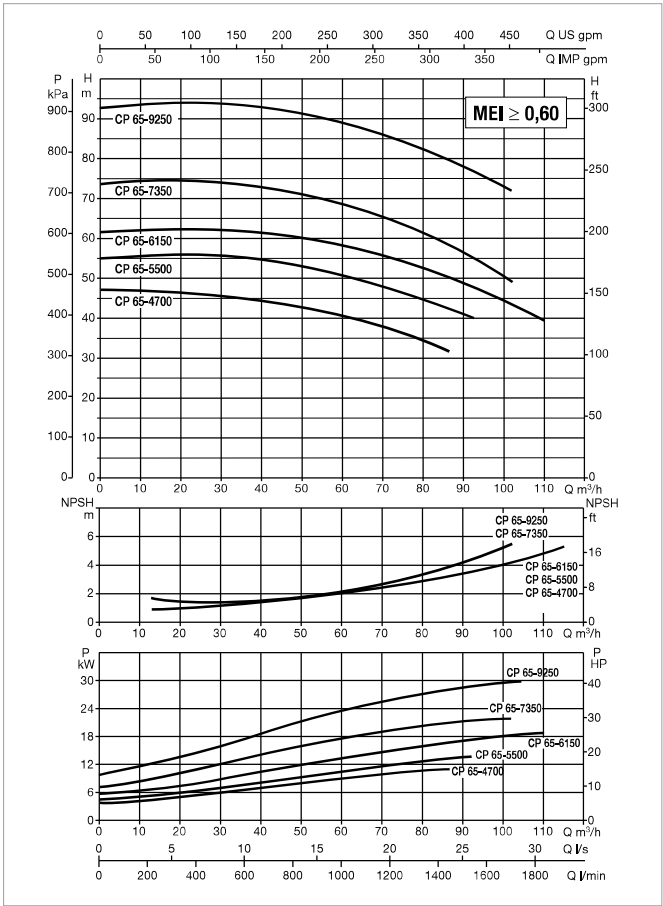
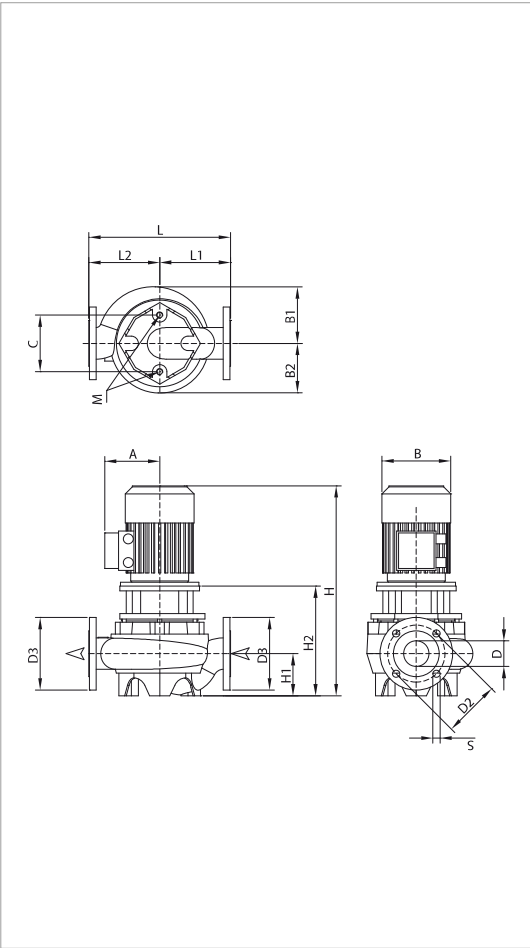
¹ star start-up possible (A)

MODEL	A	B1	B2	C	D	D2	D3	S	no. of holes	H	H1	H2	L	L1	L2	M	PACKING DIMENSIONS			VOL. (m ³)	WEIGHT Kg
																	L/A	L/B	H		
CP-G 65-1470/A/BAQE/1,5	130	144	126	144	65	145	185	18	4	557	107	279	360	180	180	M16	680	430	834	0,244	57
CP-G 65-1900/A/BAQE/2,2	130	144	126	144	65	145	185	18		583	107	279	360	180	180	M16	680	430	834	0,244	58
CP-G 65-2280/A/BAQE/3	147	144	126	144	65	145	185	18		653	107	307	360	180	180	M16	680	430	834	0,244	68
CP-G 65-2640/A/BAQE/4	169	144	126	144	65	145	185	18		635	107	307	360	180	180	M16	680	430	1084	0,317	68
CP-G 65-3400/A/BAQE/5,5	188	151	151	144	65	145	185	18		716	107	346	360	180	180	M16	680	430	1084	0,317	80
CP-G 65-4100/A/BAQE/7,5	188	151	151	144	65	145	185	18		783	107	346	360	180	180	M16	680	430	1084	0,317	87

CP-G 65 2 POLES - IN-LINE PUMPS

Pumped liquid temperature range: from -10 °C to +140 °C - Maximum ambient temperature: +40 °C

IN-LINE PUMPS



The performance curves are based on kinematic viscosity values = 1 mm²/s and density equal to 1000 kg/m³. Curve tolerance according to ISO 9906.

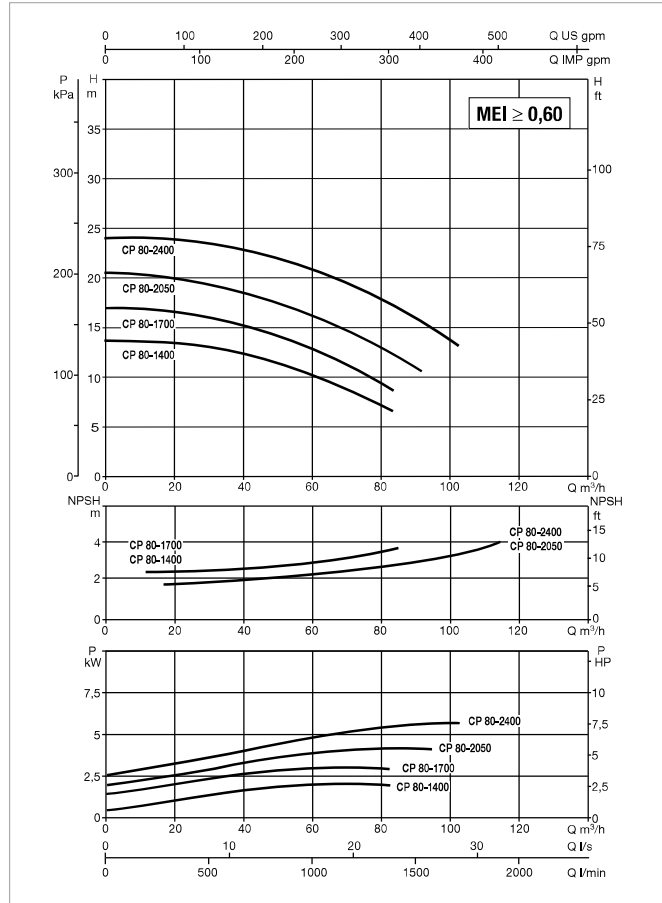
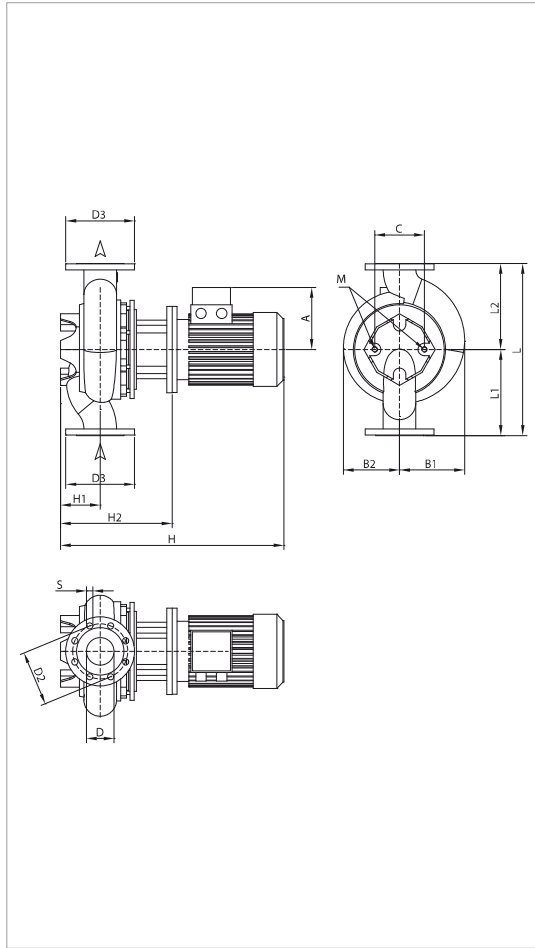
MODEL	CENTRE DISTANCE	PUMP CONNECTIONS	ELECTRICAL DATA								
			POWER INPUT 50 Hz	n r.p.m.	P1 MAX KW	P2 NOMINAL		In A 400 V	MOTOR TYPE	MOTOR SIZE	I st. A
CP-G 65-4700/A/ BAQE/11	475	DN 65	3 x 400 V ~ ¹	2940	14,1	11	15	19,9	IE3	MEC 160M	147,4
CP-G 65-5500/A/ BAQE/15	475	DN 65	3 x 400 V ~ ¹	2943	17,2	15	20	26,8	IE3	MEC 160M	204
CP-G 65-6150/A/ BAQE/18,5	475	DN 65	3 x 400 V ~ ¹	2947	21,8	18,5	25	33	IE3	MEC 160L	262,4
CP-G 65-7350/A/ BAQE/22	475	DN 65	3 x 400 V ~ ¹	2961	24,1	22	30	38,1	IE3	MEC 180M	330,6
CP-G 65-9250/A/ BAQE/30	475	DN 65	3 x 400 V ~ ¹	2950	32,5	30	40	52,1	IE3	MEC 200L	468

¹ star start-up possible (Δ)

MODEL	A	B1	B2	C	D	D2	D3	S	no. of holes	H	H1	H2	L	L1	L2	M	PACKING DIMENSIONS			VOL. (m ³)	WEIGHT Kg
																	L/A	L/B	H		
CP-G 65-4700/A/ BAQE/11	242	180	176	144	65	145	185	18	4	893	215	388	475	237,5	237,5	M16	1200	720	720	0,622	198
CP-G 65-5500/A/ BAQE/15	242	180	176	144	65	145	185	18		893	215	388	475	237,5	237,5	M16	1200	720	720	0,622	194
CP-G 65-6150/A/ BAQE/18,5	242	180	176	144	65	145	185	18		937	215	388	475	237,5	237,5	M16	1200	720	720	0,622	198
CP-G 65-7350/A/ BAQE/22	260	190	190	144	65	145	185	18		968	215	388	475	237,5	237,5	M16	1200	720	720	0,622	232
CP-G 65-9250/A/ BAQE/30	292	210	210	144	65	145	185	18		1058	215	388	475	237,5	237,5	M16	1200	720	720	0,622	310

CP-G 80 2 POLES - IN-LINE PUMPS

Pumped liquid temperature range: from -10 °C to +140 °C - Maximum ambient temperature: +40 °C



The performance curves are based on kinematic viscosity values = 1 mm²/s and density equal to 1000 kg/m³. Curve tolerance according to ISO 9906.

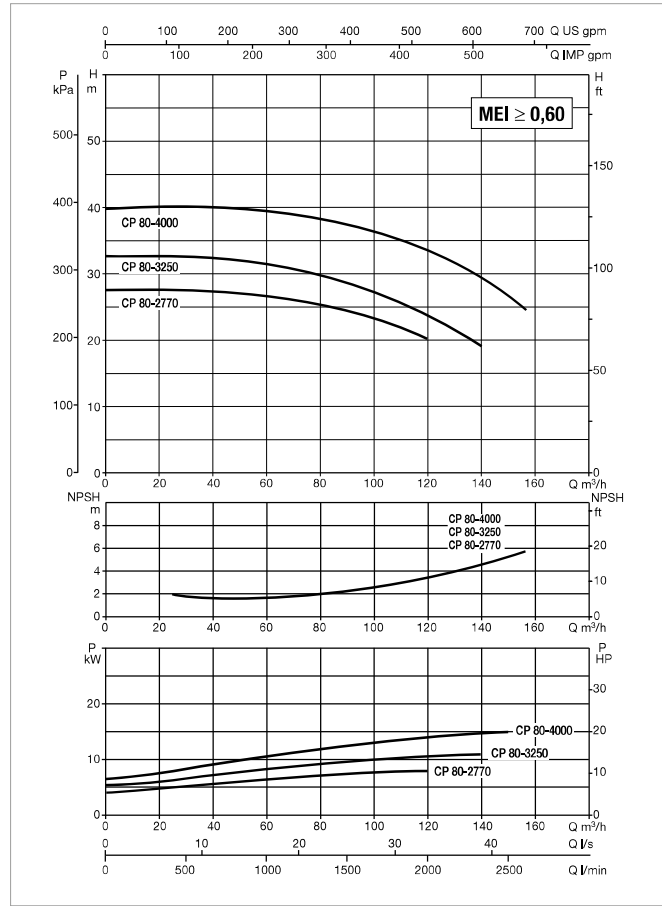
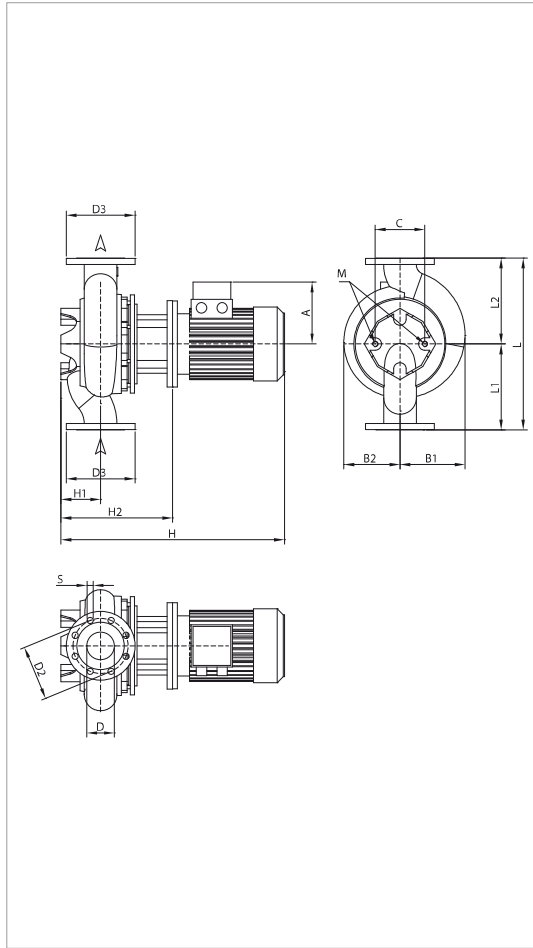
MODEL	CENTRE DISTANCE	PUMP CONNECTIONS	ELECTRICAL DATA									
			POWER INPUT 50 Hz	n r.p.m.	P1 MAX KW	P2 NOMINAL		In A		MOTOR TYPE	MOTOR SIZE	I st. A
			kW		kW	HP	230 V	400 V				
CP-G 80-1400/A/BAQE/2,2	360	DN 80	3x230-400 V ~	2874	3	2,2	3	7,97	4,6	IE3	MEC 90L	73,3/42,3
CP-G 80-1700/A/BAQE/3	360	DN 80	3 x 400 V ~ ¹	2880	3,5	3	4	-	5,6	IE3	MEC 100L	49,3
CP-G 80-2050/A/BAQE/4	360	DN 80	3 x 400 V ~ ¹	2914	5	4	5,5	-	8,2	IE3	MEC 112M	89,3
CP-G 80-2400/A/BAQE/5,5	360	DN 80	3 x 400 V ~ ¹	2910	6,4	5,5	7,5	-	10,2	IE3	MEC 132S	114,2

¹ star start-up possible (A)

MODEL	A	B1	B2	C	D	D2	D3	S	no. of holes	H	H1	H2	L	L1	L2	M	PACKING DIMENSIONS			VOL. (m ³)	WEIGHT Kg
																	L/A	L/B	H		
CP-G 80-1400/A/ BAQE/2,2	130	135	118	144	80	160	200	18	8	585	105	281	360	180	180	M16	680	430	834	0,244	61
CP-G 80-1700/A/ BAQE/3	147	135	125	144	80	160	200	18		655	105	309	360	180	180	M16	680	430	834	0,244	71
CP-G 80-2050/A/ BAQE/4	169	135	125	144	80	160	200	18		637	105	309	360	180	180	M16	680	430	1084	0,317	71
CP-G 80-2400/A/ BAQE/5,5	188	135	151	144	80	160	200	18		718	105	348	360	180	180	M16	680	430	1084	0,317	83

CP-G 80 2 POLES - IN-LINE PUMPS

Pumped liquid temperature range: from -10 °C to +140 °C - Maximum ambient temperature: +40 °C



The performance curves are based on kinematic viscosity values = 1 mm²/s and density equal to 1000 kg/m³. Curve tolerance according to ISO 9906.

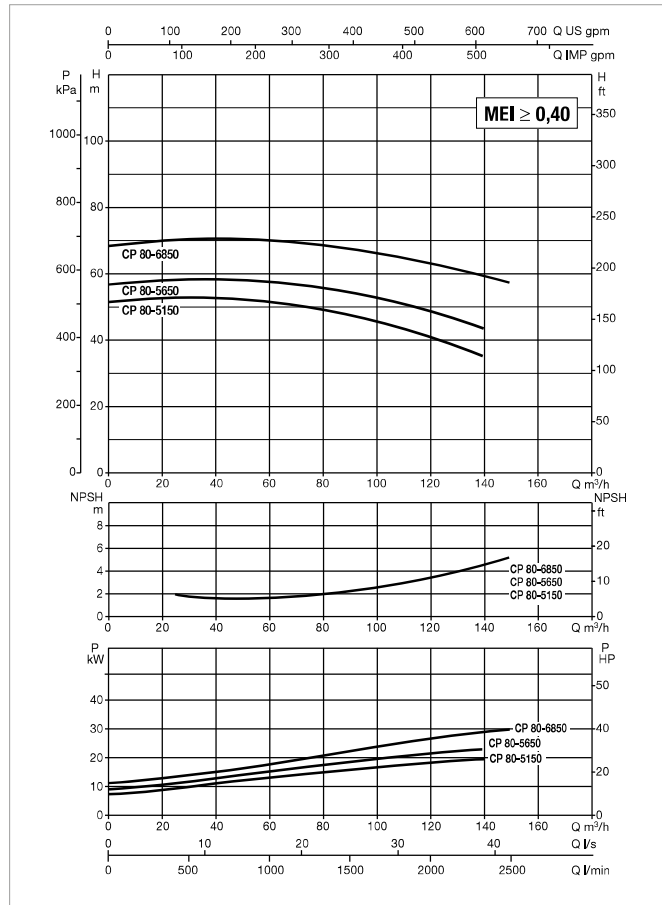
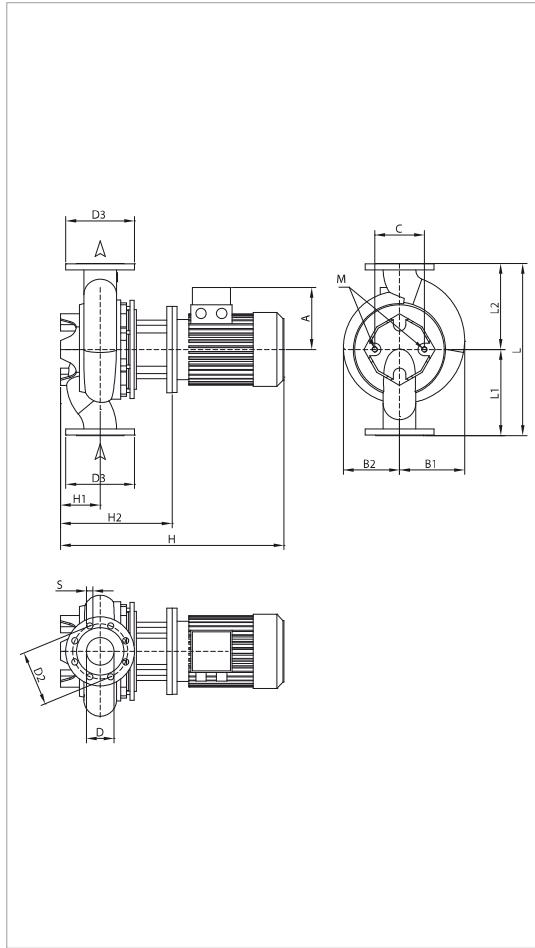
MODEL	CENTRE DISTANCE	PUMP CONNECTIONS	ELECTRICAL DATA									
			POWER INPUT 50 Hz	n r.p.m.	P1 MAX KW	P2 NOMINAL		In A 400 V	MOTOR TYPE	MOTOR SIZE	I st. A	
						kW	HP					
CP-G 80-2770/A/BAQE/7,5	440	DN 80	3 x 400 V ~ 1	2905	9,2	7,5	10	14,4	E3	MEC 132S	113,9	
CP-G 80-3250/A/BAQE/11	440	DN 80	3 x 400 V ~ 1	2932	12,7	11	15	19,9	E3	MEC 160M	147,4	
CP-G 80-4000/A/BAQE/15	440	DN 80	3 x 400 V ~ 1	2945	17,5	15	20	26,8	E3	MEC 160M	204	

¹ star start-up possible (A)

MODEL	A	B1	B2	C	D	D2	D3	S	no. of holes	H	H1	H2	L	L1	L2	M	PACKING DIMENSIONS			VOL. (m ³)	WEIGHT Kg
																	L/A	L/B	H		
CP-G 80-2770/A/BAQE/7,5	188	178	151	144	80	160	200	18	8	795	115	358	440	220	220	M16	680	430	1084	0,317	91
CP-G 80-3250/A/BAQE/11	242	178	176	144	80	160	200	18		893	115	388	440	220	220	M16	1200	720	720	0,622	196
CP-G 80-4000/A/BAQE/15	242	178	176	144	80	160	200	18		893	115	388	440	220	220	M16	1200	720	720	0,622	167

CP-G 80 2 POLES - IN-LINE PUMPS

Pumped liquid temperature range: from -10 °C to +140 °C - Maximum ambient temperature: +40 °C



The performance curves are based on kinematic viscosity values = 1 mm²/s and density equal to 1000 kg/m³. Curve tolerance according to ISO 9906.

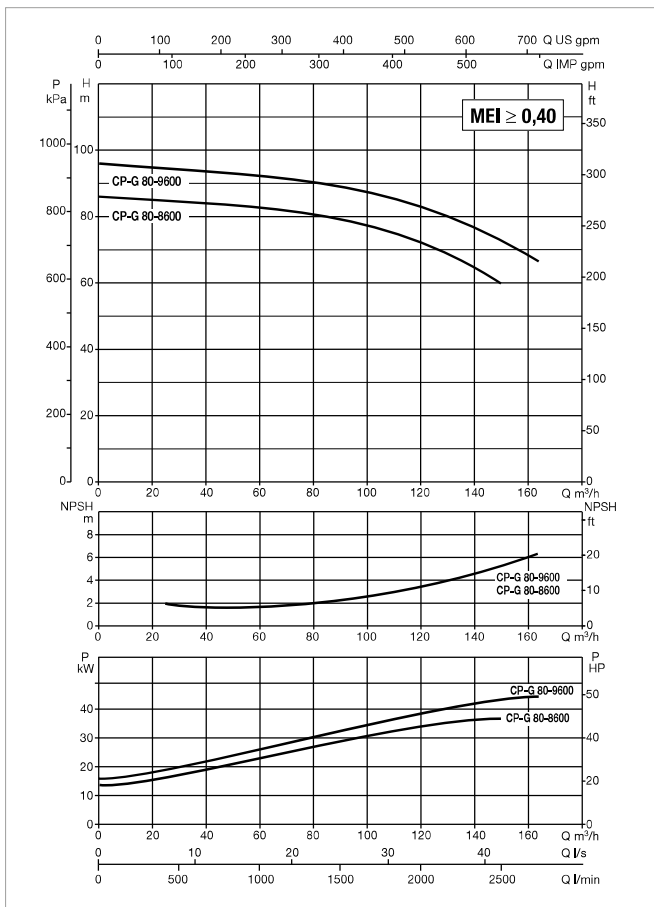
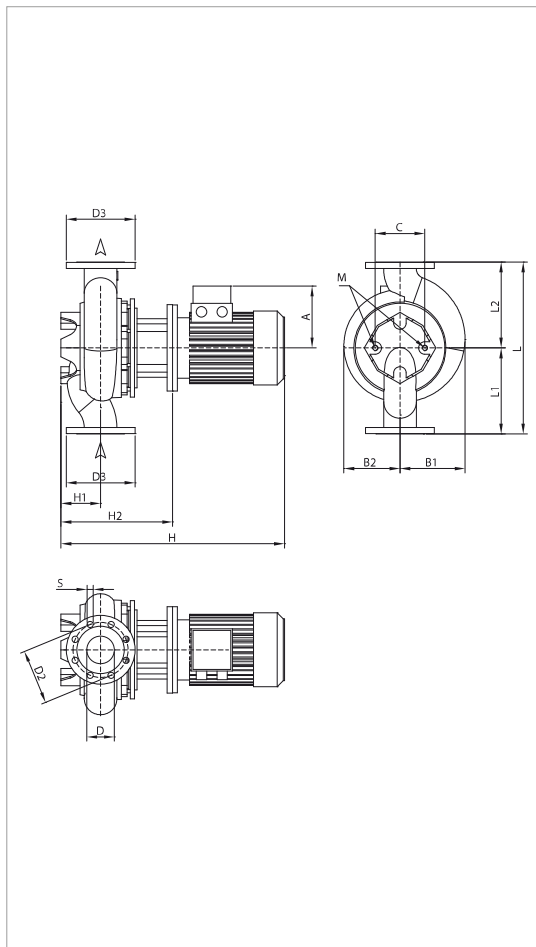
MODEL	CENTRE DISTANCE	PUMP CONNECTIONS	ELECTRICAL DATA									
			POWER INPUT 50 Hz	n r.p.m.	P1 MAX KW	P2 NOMINAL		In A 400 V	MOTOR TYPE	MOTOR SIZE	I st. A	
						kW	HP					
CP-G 80-5150/A/BAQE/18,5	500	DN 80	3 x 400 V ~ 1	2943	21	18,5	25	33	IE3	MEC 160L	262,4	
CP-G 80-5650/A/BAQE/22	500	DN 80	3 x 400 V ~ 1	2967	25,3	22	30	38,1	IE3	MEC 180M	330,6	
CP-G 80-6850/A/BAQE/30	500	DN 80	3 x 400 V ~ 1	2951	32,8	30	40	52,1	IE3	MEC 200L	468	

¹ star start-up possible (A)

MODEL	A	B1	B2	C	D	D2	D3	S	no. of holes	H	H1	H2	L	L1	L2	M	PACKING DIMENSIONS			VOL. (m ³)	WEIGHT Kg
																	L/A	L/B	H		
CP-G 80-5150/A/ BAQE/18,5	242	178	176	144	80	160	200	18	8	937	115	388	440	220	220	M16	1200	720	720	0,622	121
CP-G 80-5650/A/ BAQE/22	260	190	190	144	80	160	200	18		968	115	388	500	250	250	M16	1200	720	720	0,622	124
CP-G 80-6850/A/ BAQE/30	292	210	210	144	80	160	200	18		1050	115	380	500	250	250	M16	1200	720	720	0,622	314

CP-G 80 2 POLES - IN-LINE PUMPS

Pumped liquid temperature range: from -10 °C to +140 °C - Maximum ambient temperature: +40 °C



The performance curves are based on kinematic viscosity values = 1 mm²/s and density equal to 1000 kg/m³. Curve tolerance according to ISO 9906.

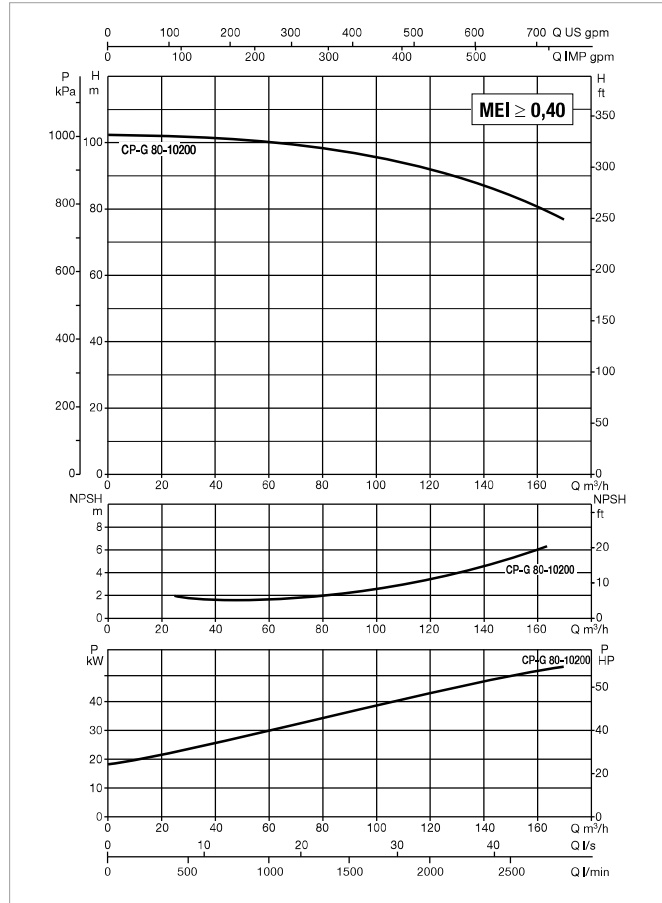
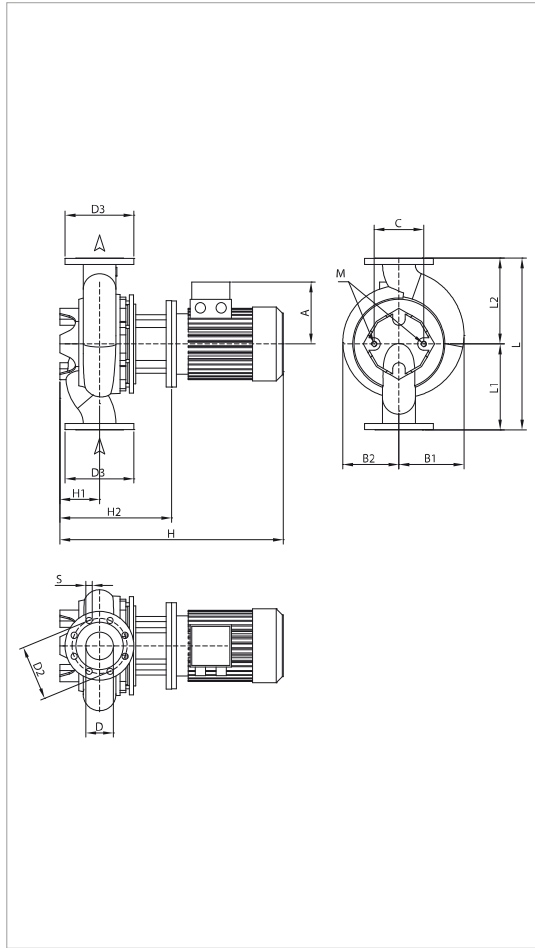
MODEL	CENTRE DISTANCE	PUMP CONNECTIONS	ELECTRICAL DATA								
			POWER INPUT 50 Hz	n r.p.m.	P1 MAX KW	P2 NOMINAL		In A 400 V	MOTOR TYPE	MOTOR SIZE	I st. A
CP-G 80-8600/A/BAQE/37	620	DN 80	3 x 400 V - 1	2967	41,9	37	50	62,6	IE3	MEC 200L	567
CP-G 80-9600/A/BAQE/45	620	DN 80	3 x 400 V - 1	2966	51,2	45	60	78,4	IE3	MEC 225M	630,8

¹ star start-up possible (A)

MODEL	A	B1	B2	C	D	D2	D3	S	no. of holes	H	H1	H2	L	L1	L2	M	PACKING DIMENSIONS			VOL. (m ³)	WEIGHT Kg
																	L/A	L/B	H		
CP-G 80-8600/A/ BAQE/37	292	245	225	230	80	160	200	18	8	1113	140	445	620	310	310	M16	1200	720	720	0,622	424
CP-G 80-9600/ A/BAQE/45	315	245	232	230	80	160	200	18		1158	140	445	620	310	310	M16	1200	720	720	0,622	347

CP-G 80 2 POLES - IN-LINE PUMPS

Pumped liquid temperature range: from -10 °C to +140 °C - Maximum ambient temperature: +40 °C



The performance curves are based on kinematic viscosity values = 1 mm²/s and density equal to 1000 kg/m³. Curve tolerance according to ISO 9906.

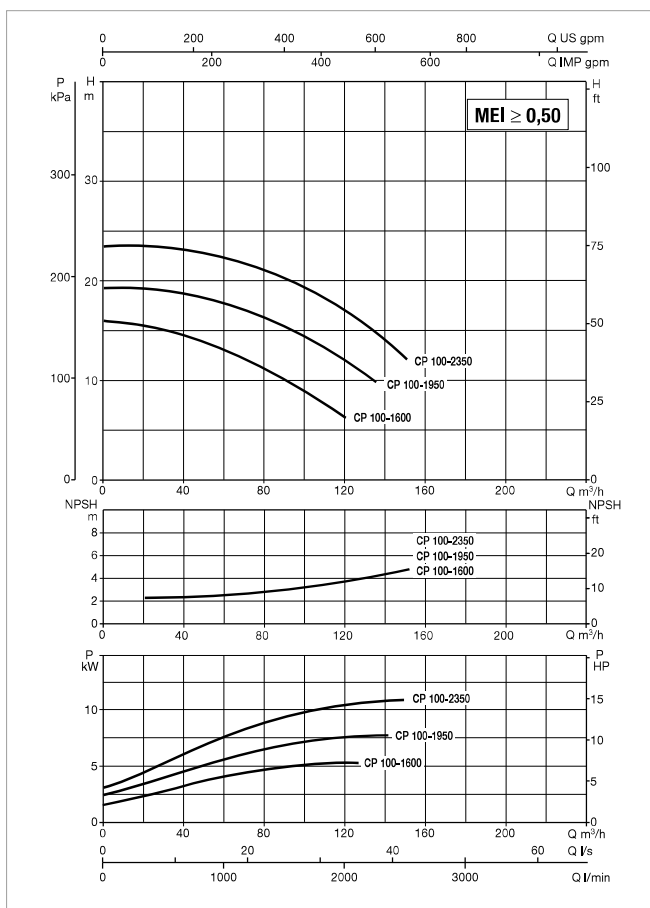
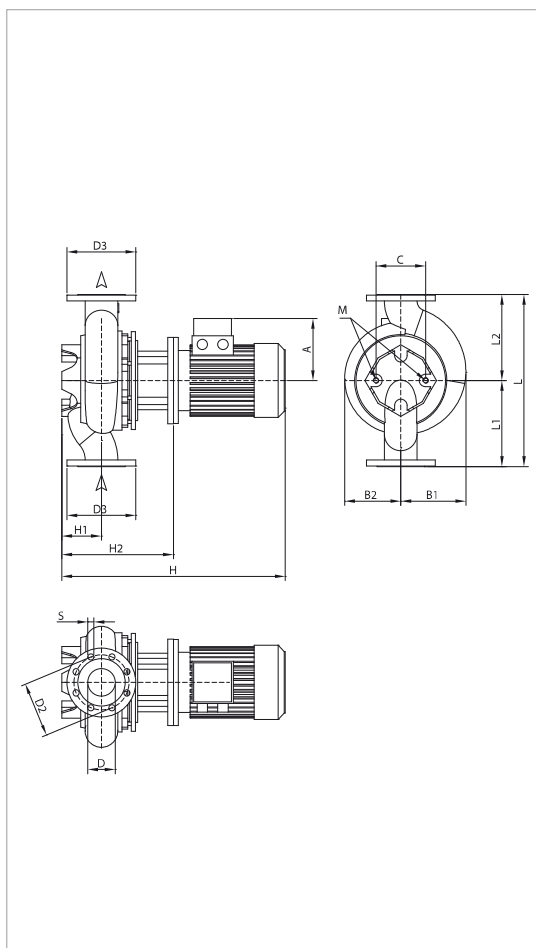
MODEL	CENTRE DISTANCE	PUMP CONNECTIONS	ELECTRICAL DATA								
			POWER INPUT 50 Hz	n r.p.m.	P1 MAX KW	P2 NOMINAL		In A 400 V	MOTOR TYPE	MOTOR SIZE	I st. A
CP-G 80-10200/A/BAQE/55	620	DN 80	3 x 400 V - 1	2979	63,2	55	75	94,6	E3	MEC 250M	684

¹ star start-up possible (A)

MODEL	A	B1	B2	C	D	D2	D3	S	no. of holes	H	H1	H2	L	L1	L2	M	PACKING DIMENSIONS			VOL. (m ³)	WEIGHT Kg
																	L/A	L/B	H		
CP-G 80-10200/ A/BAQE/55	372	275	275	230	80	160	200	18	8	1248	140	473	620	310	310	M16	2550	1300	1300	4,31	621

CP-G 100 2 POLES - IN-LINE PUMPS

Pumped liquid temperature range: from -10 °C to +140 °C - Maximum ambient temperature: +40 °C



The performance curves are based on kinematic viscosity values = 1 mm²/s and density equal to 1000 kg/m³. Curve tolerance according to ISO 9906.

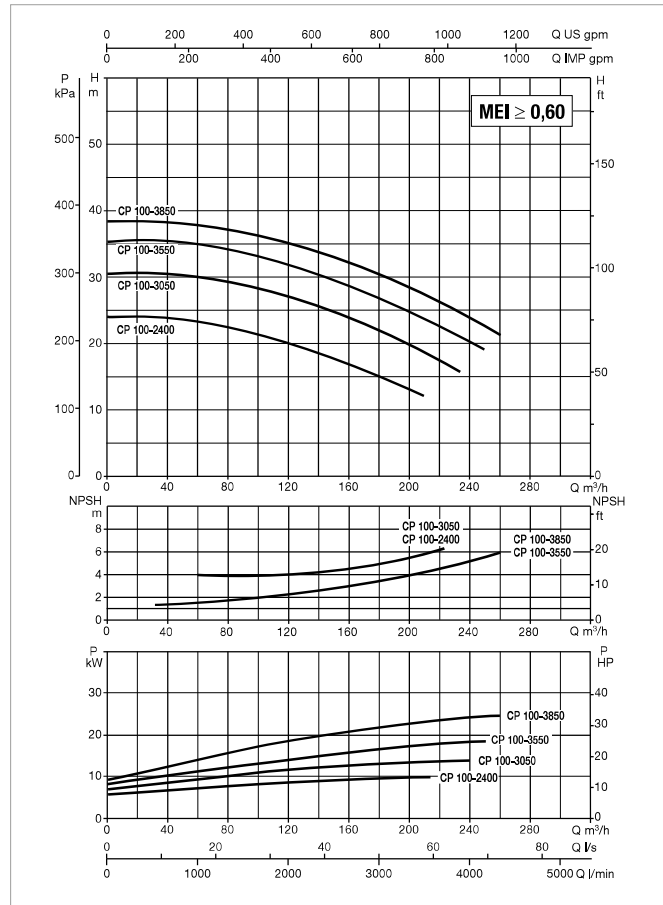
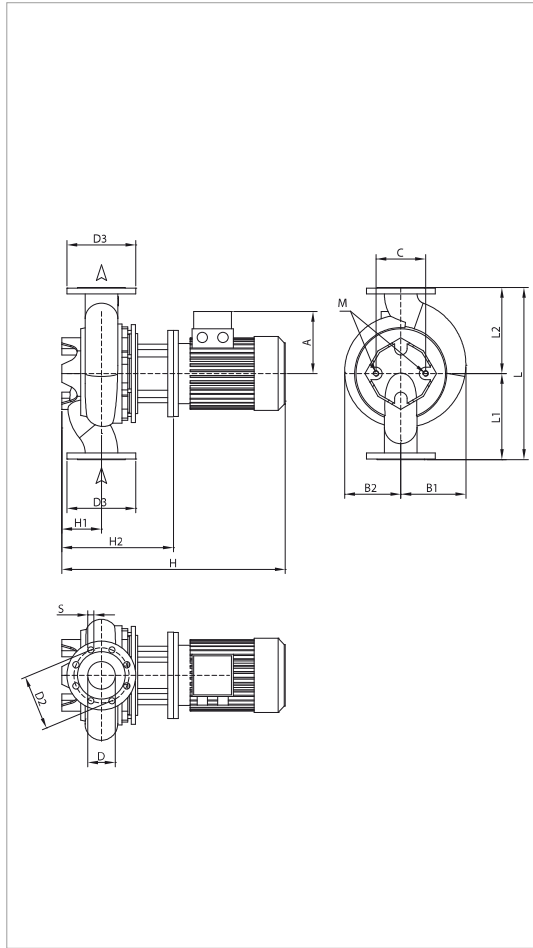
MODEL	CENTRE DISTANCE	PUMP CONNECTIONS	ELECTRICAL DATA								
			POWER INPUT 50 Hz	n r.p.m.	P1 MAX KW	P2 NOMINAL		In A 400 V	MOTOR TYPE	MOTOR SIZE	I st. A
CP-G 100-1600/A/BAQE/4	500	DN 100	3 x 400 V ~ 1	2918	5,3	4	5,5	8,2	IE3	MEC 112M	89,3
CP-G 100-1950/ A/BAQE/5,5	500	DN 100	3 x 400 V ~ 1	2918	7	5,5	7,5	10,2	IE3	MEC 132S	114,2
CP-G 100-2350/ A/BAQE/7,5	500	DN 100	3 x 400 V ~ 1	2906	9,2	7,5	10	14,4	IE3	MEC 132S	113,9

¹ star start-up possible (A)

MODEL	A	B1	B2	C	D	D2	D3	S	no. of holes	H	H1	H2	L	L1	L2	M	PACKING DIMENSIONS			VOL. (m ³)	WEIGHT Kg
																	L/A	L/B	H		
CP-G 100-1600/A/BAQE/4	169	156	126	144	100	180	220	18	8	674	140	346	500	250	250	M16	1200	720	720	0,622	64
CP-G 100-1950/ A/BAQE/5,5	169	158	150	144	100	180	220	18		775	140	385	500	250	250	M16	1200	720	720	0,622	102
CP-G 100-2350/ A/BAQE/7,5	188	158	150	144	100	180	220	18		822	140	385	500	250	250	M16	1200	720	720	0,622	89

CP-G 100 2 POLES - IN-LINE PUMPS

Pumped liquid temperature range: from -10 °C to +140 °C - Maximum ambient temperature: +40 °C



The performance curves are based on kinematic viscosity values = 1 mm²/s and density equal to 1000 kg/m³. Curve tolerance according to ISO 9906.

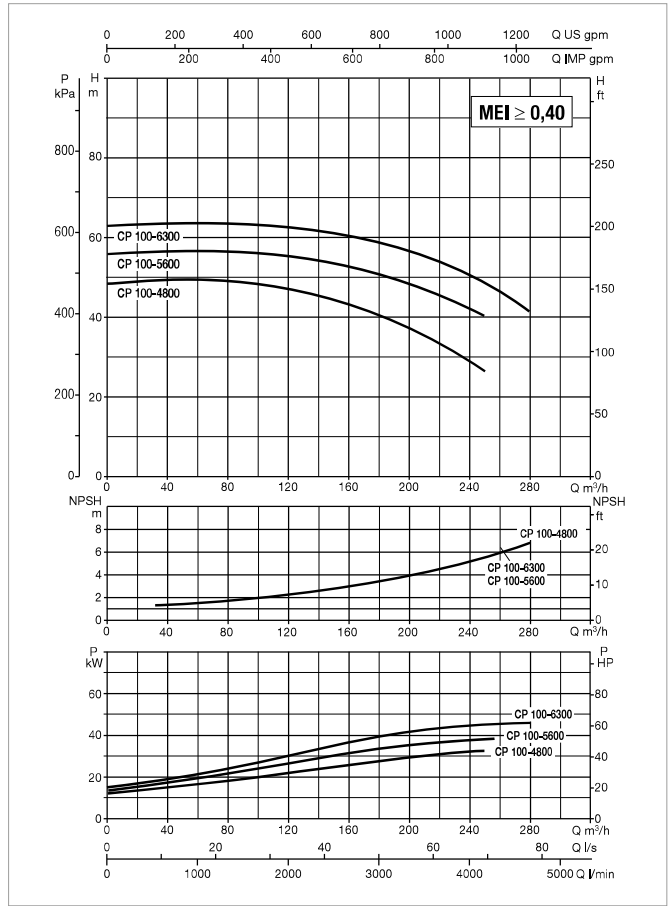
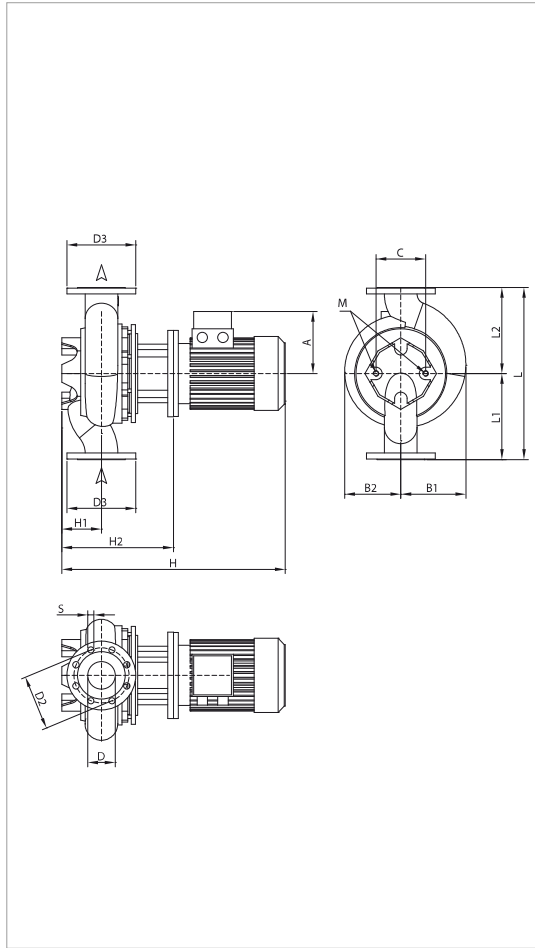
MODEL	CENTRE DISTANCE	PUMP CONNECTIONS	ELECTRICAL DATA								
			POWER INPUT 50 Hz	n r.p.m.	P1 MAX KW	P2 NOMINAL		In A 400 V	MOTOR TYPE	MOTOR SIZE	I st. A
CP-G 100-2400/A/BAQE/11	550	DN 100	3 x 400 V ~ ¹	2940	13,9	11	15	19,9	IE3	MEC 160M	147,4
CP-G 100-3050/A/BAQE/15	550	DN 100	3 x 400 V ~ ¹	2941	16,9	15	20	26,8	IE3	MEC 160M	204
CP-G 100-3550/ A/BAQE/18,5	550	DN 100	3 x 400 V ~ ¹	2948	21,9	18,5	25	33	IE3	MEC 160L	262,4
CP-G 100-3850/A/BAQE/22	550	DN 100	3 x 400 V ~ ¹	2973	26,5	22	30	38,1	IE3	MEC 180M	330,6

¹ star start-up possible (Δ)

MODEL	A	B1	B2	C	D	D2	D3	S	no. of holes	H	H1	H2	L	L1	L2	M	PACKING DIMENSIONS			VOL. (m ³)	WEIGHT Kg
																	L/A	L/B	H		
CP-G 100-2400/A/BAQE/11	242	193	176	144	100	180	220	18	8	915	140	410	550	275	275	M16	1200	720	720	0,622	127
CP-G 100-3050/A/BAQE/15	242	193	176	144	100	180	220	18		915	140	410	550	275	275	M16	1200	720	720	0,622	150
CP-G 100-3550/ A/BAQE/18,5	242	193	176	144	100	180	220	18		959	140	410	550	275	275	M16	1200	720	720	0,622	146
CP-G 100-3850/A/BAQE/22	260	192	190	230	100	180	220	18		990	140	410	550	275	275	M16	1200	720	720	0,622	259

CP-G 100 2 POLES - IN-LINE PUMPS

Pumped liquid temperature range: from -10 °C to +140 °C - Maximum ambient temperature: +40 °C



The performance curves are based on kinematic viscosity values = 1 mm²/s and density equal to 1000 kg/m³. Curve tolerance according to ISO 9906.

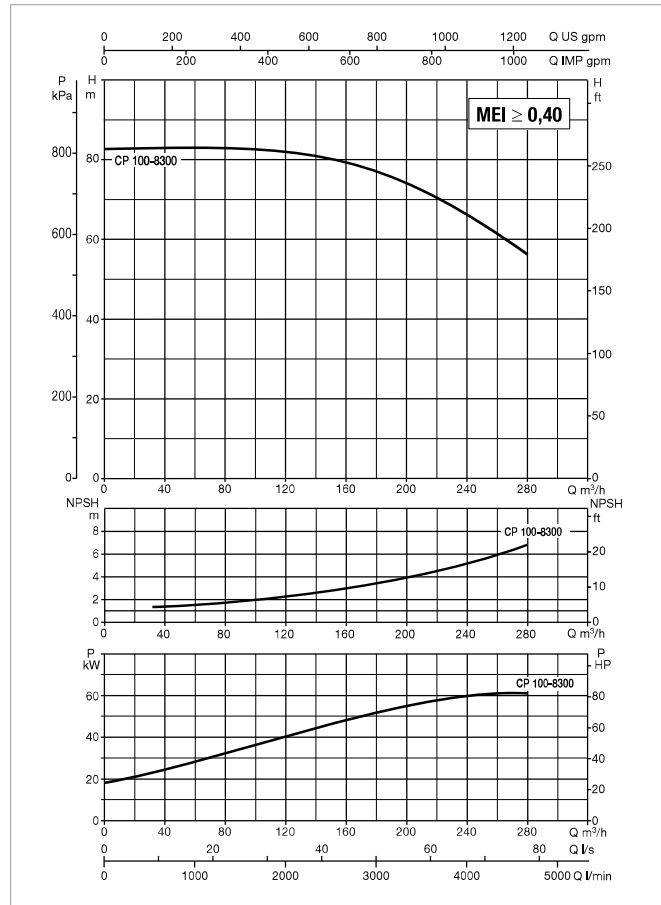
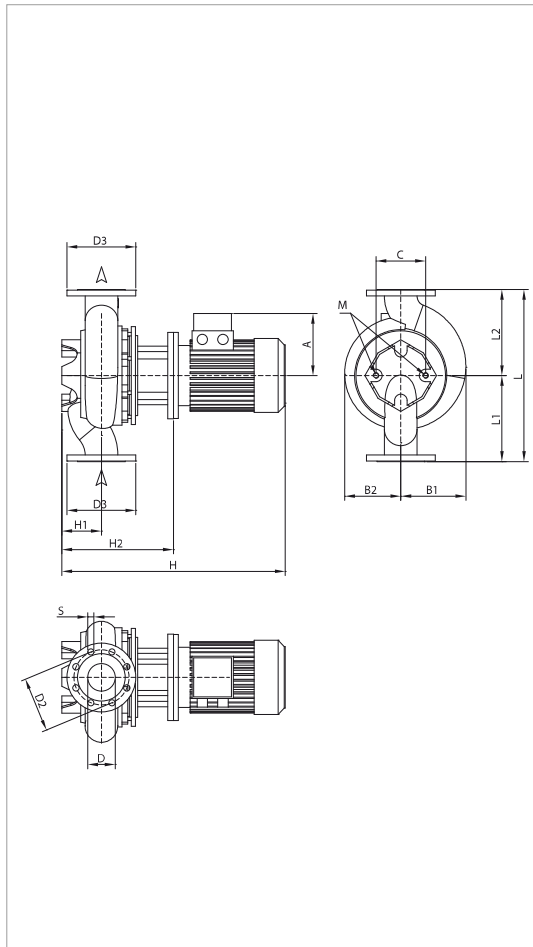
MODEL	CENTRE DISTANCE	PUMP CONNECTIONS	ELECTRICAL DATA								
			POWER INPUT 50 Hz	n r.p.m.	P1 MAX KW	P2 NOMINAL		In A 400 V	MOTOR TYPE	MOTOR SIZE	I st. A
						kW	HP				
CP-G 100-4800/A/BAQE/30	550	DN 100	3 x 400 V ~ 1	2966	39,2	30	40	52,1	IE3	MEC 200L	468
CP-G 100-5600/A/BAQE/37	550	DN 100	3 x 400 V ~ 1	2975	45	37	50	62,6	IE3	MEC 200L	567
CP-G 100-6300/A/BAQE/45	550	DN 100	3 x 400 V ~ 1	2975	55,9	45	60	78,4	IE3	MEC 225M	630,8

¹ star start-up possible (A)

MODEL	A	B1	B2	C	D	D2	D3	S	no. of holes	H	H1	H2	L	L1	L2	M	PACKING DIMENSIONS			VOL. (m ³)	WEIGHT Kg
																	L/A	L/B	H		
																	CP-G 100-4800/A/BAQE/30	292	210		
CP-G 100-5600/A/BAQE/37	292	210	210	230	100	180	220	18	8	1117	140	447	550	275	275	M16	1200	720	720	0,622	397
CP-G 100-6300/A/BAQE/45	315	235	235	230	100	180	220	18	8	1162	140	447	550	275	275	M16	1200	720	720	0,622	470

CP-G 100 2 POLES - IN-LINE PUMPS

Pumped liquid temperature range: from -10 °C to +140 °C - Maximum ambient temperature: +40 °C



The performance curves are based on kinematic viscosity values = 1 mm²/s and density equal to 1000 kg/m³. Curve tolerance according to ISO 9906.

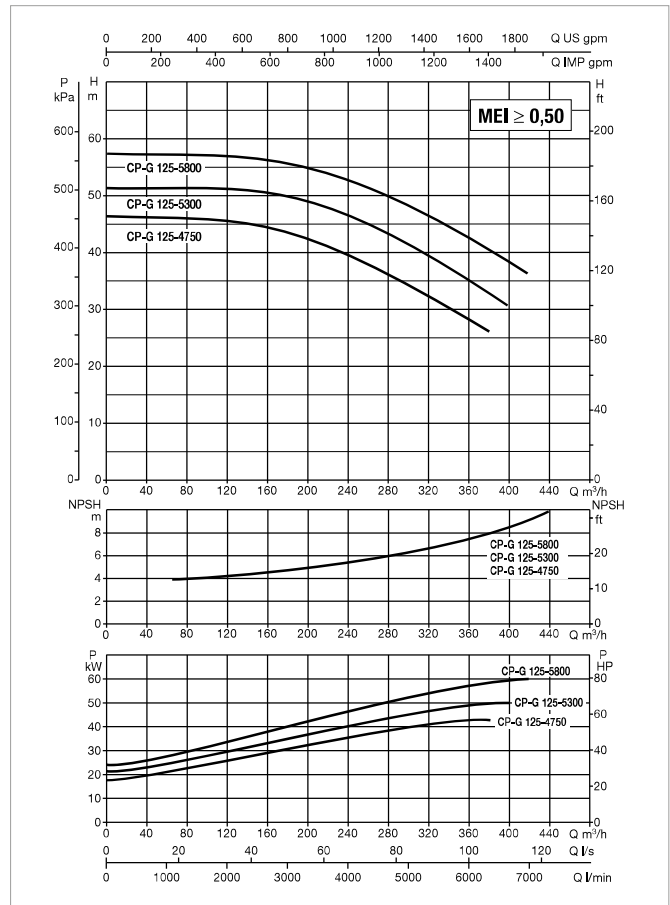
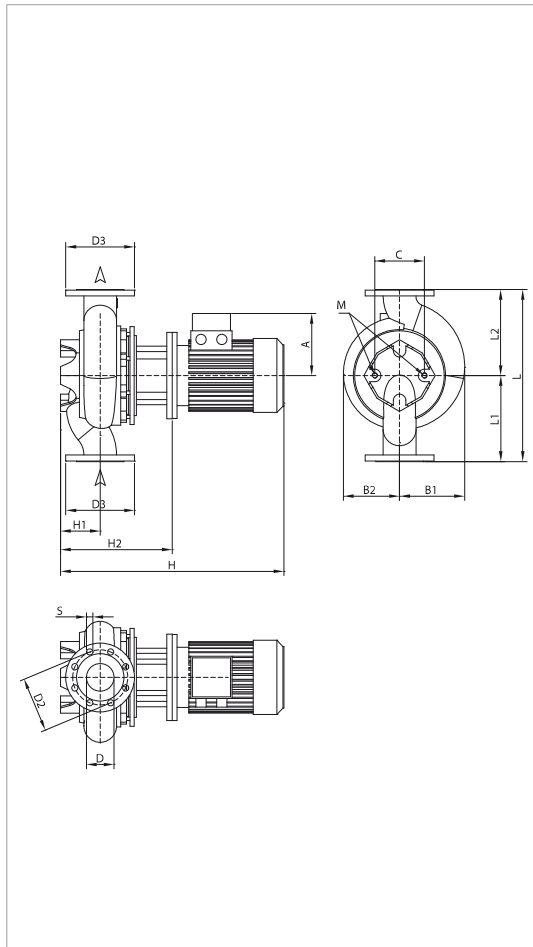
MODEL	CENTRE DISTANCE	PUMP CONNECTIONS	ELECTRICAL DATA								
			POWER INPUT 50 Hz	η r.p.m.	P1 MAX KW	P2 NOMINAL		In A 400 V	MOTOR TYPE	MOTOR SIZE	I st. A
CP-G 100-8300/A/BAQE/55	670	DN 100	3 x 400 V ~ 1	2981	70,1	55	75	94,6	E3	MEC 250M	684

¹ star start-up possible (A)

MODEL	A	B1	B2	C	D	D2	D3	S	no. of holes	H	H1	H2	L	L1	L2	M	PACKING DIMENSIONS			VOL. (m ³)	WEIGHT Kg
																	L/A	L/B	H		
CP-G 100-8300/A/BAQE/55	372	293	275	230	100	180	220	18	8	1288	175	513	670	335	335	M16	1500	760	725	0,827	627

CP-G 125 2 POLES - IN-LINE PUMPS

Pumped liquid temperature range: from -10 °C to +140 °C - Maximum ambient temperature: +40 °C



The performance curves are based on kinematic viscosity values = 1 mm²/s and density equal to 1000 kg/m³. Curve tolerance according to ISO 9906.

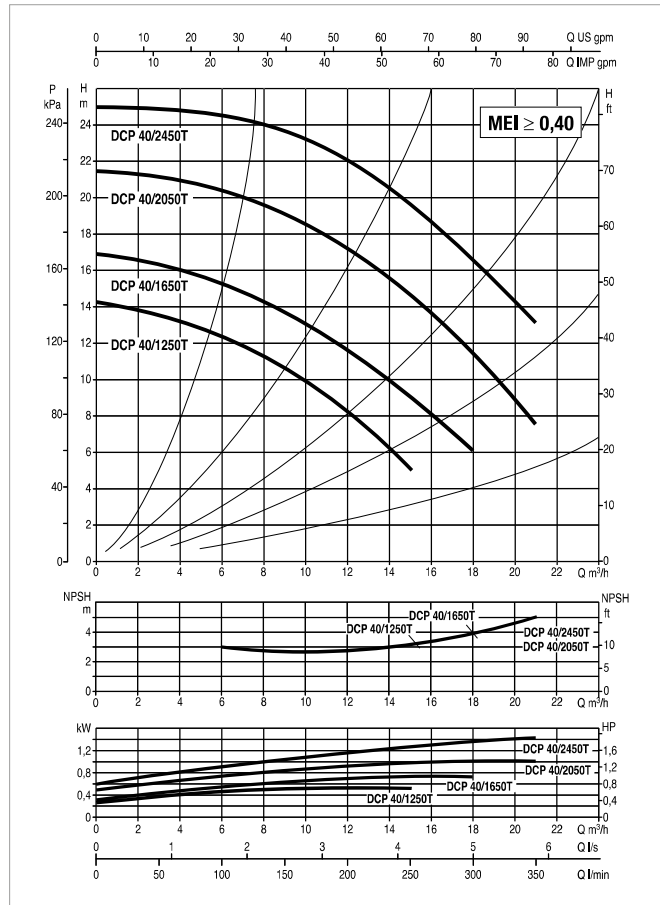
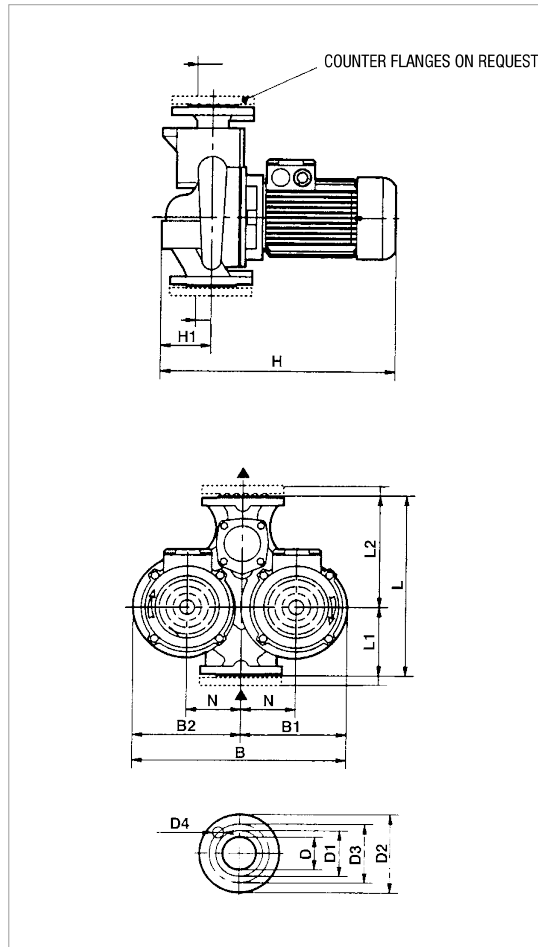
MODEL	CENTRE DISTANCE	PUMP CONNECTIONS	ELECTRICAL DATA								
			POWER INPUT 50 Hz	n r.p.m.	P1 MAX KW	P2 NOMINAL		In A 400 V	MOTOR TYPE	MOTOR SIZE	I st. A
CP-G 125-4750/A/BAQE/37	620	DN 125	3 x 400 V ~ 1	2975	44,7	37	50	62,6	IE3	MEC 200L	567
CP-G 125-5300/A/BAQE/45	620	DN 125	3 x 400 V ~ 1	2973	53,9	45	60	78,4	IE3	MEC 225M	630,8
CP-G 125-5800/A/BAQE/55	620	DN 125	3 x 400 V ~ 1	2985	68,2	55	75	94,6	IE3	MEC 250M	684

¹ star start-up possible (A)

MODEL	A	B1	B2	C	D	D2	D3	S	no. of holes	H	H1	H2	L	L1	L2	M	PACKING DIMENSIONS			VOL. (m ³)	WEIGHT Kg
																	L/A	L/B	H		
CP-G 125-4750/A/BAQE/37	292	252	210	230	125	210	250	18	8	1198	215	528	620	310	310	M16	1125	680	1300	0,995	444
CP-G 125-5300/A/BAQE/45	315	252	235	230	125	210	250	18		1243	215	528	620	310	310	M16	760	725	1500	0,827	507
CP-G 125-5800/A/BAQE/55	372	275	275	230	125	210	250	18		1333	215	558	620	310	310	M16	760	725	1500	0,827	539

DCP 40 2 POLES - IN-LINE PUMPS

Pumped liquid temperature range: from -10 °C to +130 °C - Maximum ambient temperature: +40 °C



The performance curves are based on kinematic viscosity values = 1 mm²/s and density equal to 1000 kg/m³. Curve tolerance according to ISO 9906.

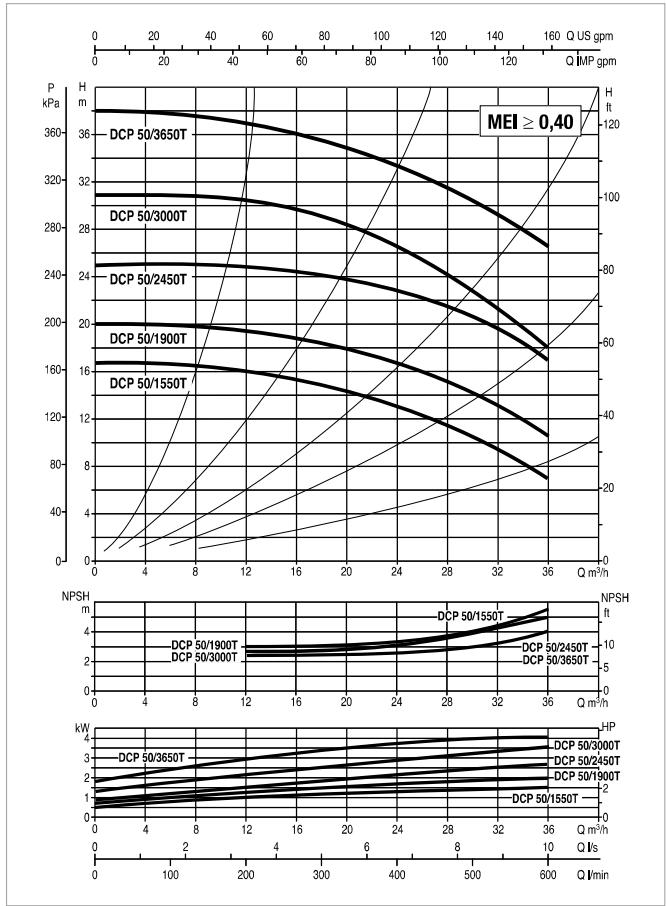
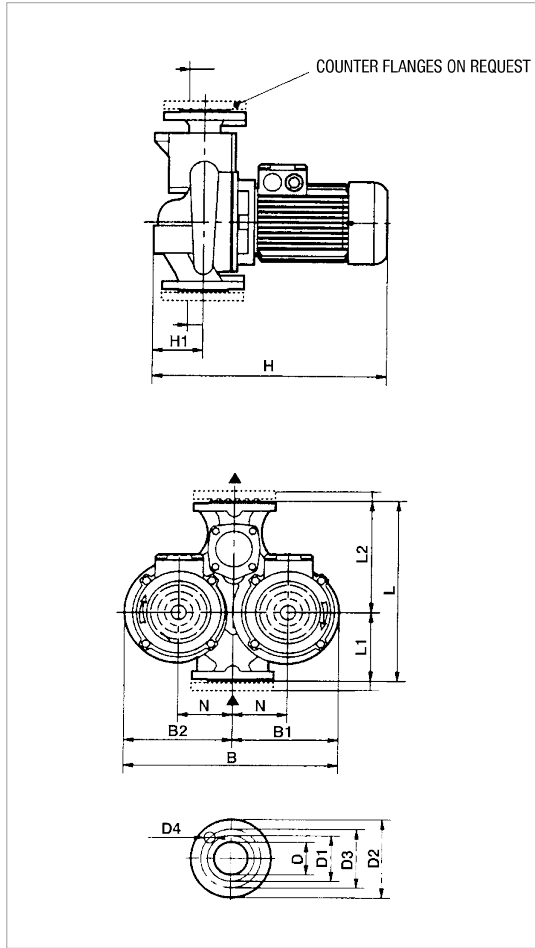
MODEL	CENTRE DISTANCE	PUMP CONNECTIONS	ELECTRICAL DATA							MOTOR TYPE
			POWER INPUT 50 Hz	n r.p.m.	P1 MAX KW	P2 NOMINAL		In A		
						kW	HP	230 V	400 V	
DCP 40/1250 T	340	DN 40	3 x 230 - 400 V ~	2900	0,83	0,75	1	2,9	1,7	IE3
DCP 40/1650 T	340	DN 40	3 x 230 - 400 V ~	2900	1,05	0,75	1	2,9	1,7	IE3
DCP 40/2050 T	340	DN 40	3 x 230 - 400 V ~	2900	1,33	1,1	1,5	4,3	2,5	IE3
DCP 40/2450 T	340	DN 40	3 x 230 - 400 V ~	2900	2,07	1,5	2	5,9	3,4	IE3

MODEL	B	B1	B2	D	D1	D2	D3	D4	no. of holes	H	H1	L	L1	L2	N	PACKING DIMENSIONS			VOL. (m ³)	WEIGHT Kg
																L/A	L/B	H		
DCP 40/1250 T	397	200	197	40 PN6	88	150	110	18	4	425	100	340	130	210	100	520	320	535	0,089	50
DCP 40/1650 T	397	200	197	40 PN6	88	150	110	18		425	100	340	130	210	100	520	320	535	0,089	50
DCP 40/2050 T	397	200	197	40 PN6	88	150	110	18		445	100	340	130	210	100	520	320	535	0,089	52
DCP 40/2450 T	397	200	197	40 PN6	88	150	110	18		445	100	340	130	210	100	520	320	535	0,089	54

DCP 50 2 POLES - IN-LINE PUMPS

Pumped liquid temperature range: from -10 °C to +130 °C - Maximum ambient temperature: +40 °C

IN-LINE PUMPS



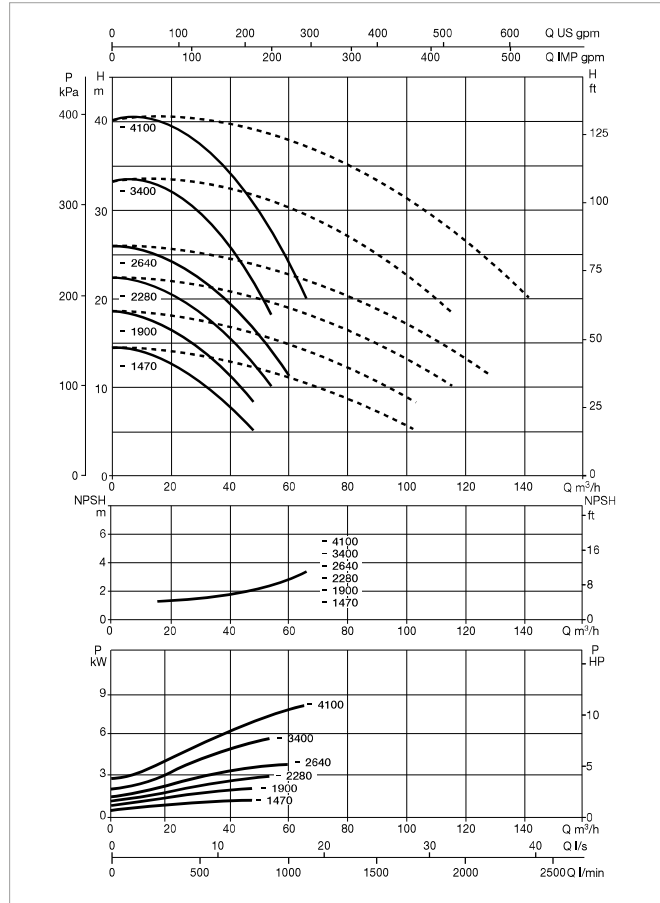
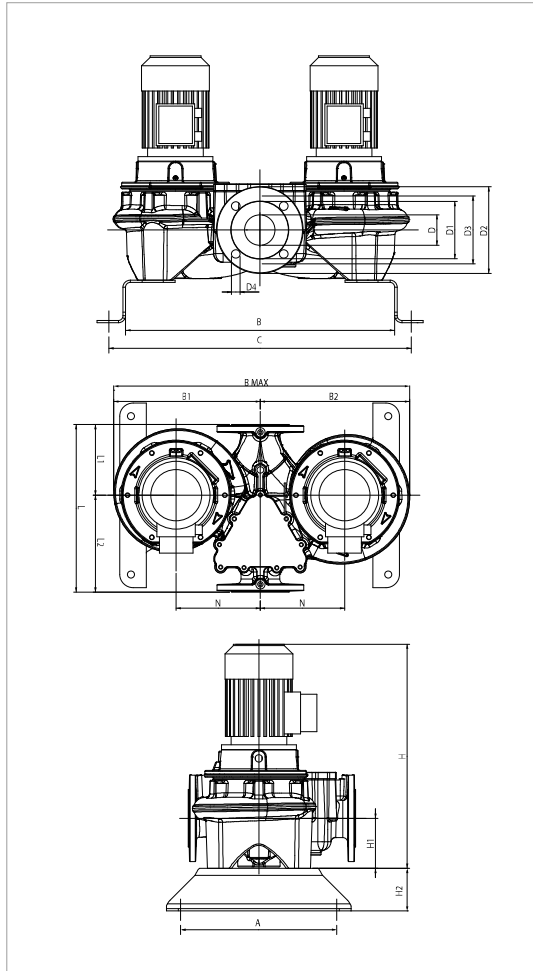
The performance curves are based on kinematic viscosity values = 1 mm²/s and density equal to 1000 kg/m³. Curve tolerance according to ISO 9906.

MODEL	CENTRE DISTANCE	PUMP CONNECTIONS	ELECTRICAL DATA								
			POWER INPUT 50 Hz	n r.p.m.	P1 MAX KW	P2 NOMINAL		In A		MOTOR TYPE	MOTOR SIZE
						kW	HP	230 V	400 V		
DCP 50/1550 T	365	DN 50	3 x 230 - 400 V ~	2900	2,07	1,5	2	5,9	3,4	IE3	MEC90S
DCP 50/1900 T	365	DN 50	3 x 230 - 400 V ~	2900	2,53	2	2,7	8	4,6	IE3	MEC90L
DCP 50/2450 T	365	DN 50	3 x 230 - 400 V ~	2900	3,54	3	4	10,2	5,9	IE3	MEC100L
DCP 50/3000 T	365	DN 50	3 x 230 - 400 V ~	2900	3,54	3	4	10,2	5,9	IE3	MEC100L
DCP 50/3650 T	410	DN 50	3 x 230 - 400 V ~	2900	4,87	4	5,5	13,5	7,8	IE3	MEC112M

MODEL	B	B1	B2	D	D1	D2	D3	D4	no. of holes	H	H1	L	L1	L2	N	PACKING DIMENSIONS			VOL. (m ³)	WEIGHT Kg
																L/A	L/B	H		
DCP 50/1550 T	427	217	210	50 PN10	102	165	125	18	4	455	110	365	145	220	105	520	320	535	0,089	56
DCP 50/1900 T	427	217	210	50 PN10	102	165	125	18		455	110	365	145	220	105	520	320	535	0,089	58
DCP 50/2450 T	427	217	210	50 PN10	102	165	125	18		455	110	365	145	220	105	520	320	535	0,089	66
DCP 50/3000 T	480	217	210	50 PN10	102	165	125	18		495	110	365	145	220	105	580	360	585	0,122	56
DCP 50/3650 T	480	245	235	50 PN10	102	165	125	18		535	110	410	170	240	120	580	360	585	0,122	86

DCP-G 65 2 POLES - IN-LINE PUMPS

Pumped liquid temperature range: from -10 °C to +140 °C - Maximum ambient temperature: +40 °C



The performance curves are based on kinematic viscosity values = 1 mm²/s and density equal to 1000 kg/m³. Curve tolerance according to ISO 9906.

For the MEI index refer to the hydraulic data of the individual pump.

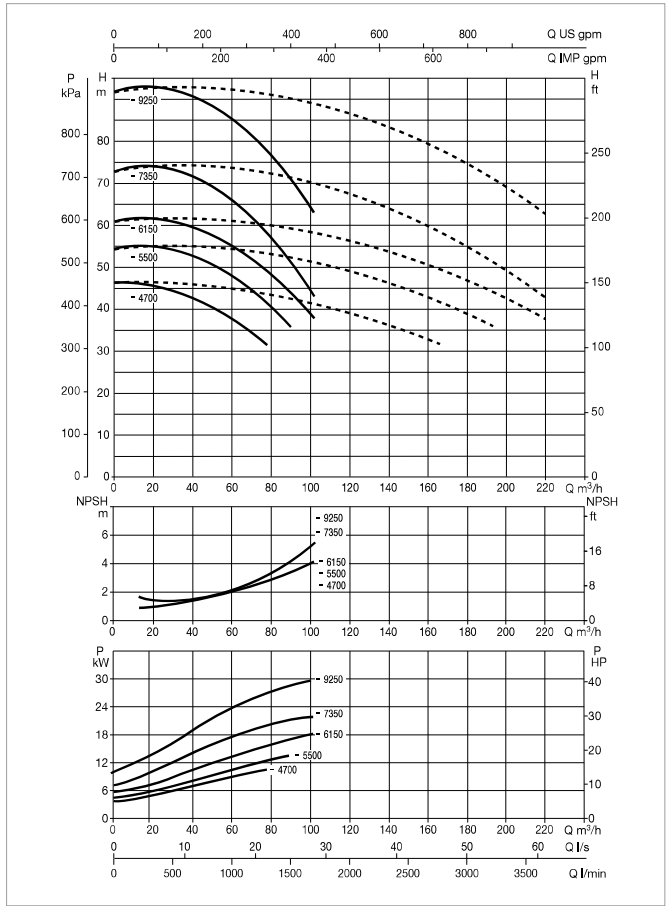
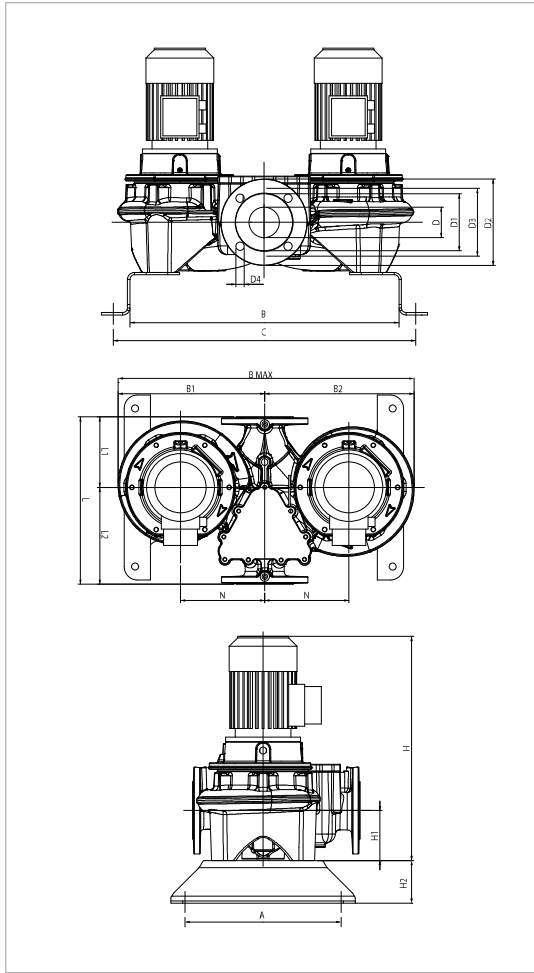
MODEL	CENTRE DISTANCE	PUMP CONNECTIONS	ELECTRICAL DATA								MOTOR TYPE	MOTOR SIZE	I st. A
			POWER INPUT 50 Hz	n r.p.m.	P1 MAX KW	P2 NOMINAL		In A					
						KW	HP	230 V	400 V				
DCP-G 65-1470/A/ BAQE/1,5	360	DN 65	3x230-400 V ~	2883	1,9	1,5	2	5,2	3	IE3	MEC90S	43,7/25,2	
DCP-G 65-1900/A/ BAQE/2,2	360	DN 65	3x230-400 V ~	2872	3,1	2,2	3	7,97	4,6	IE3	MEC90L	73,3/42,3	
DCP-G 65-2280/A/ BAQE/3	360	DN 65	3 x 400 V ~ ¹	2882	3,4	3	4	-	5,6	IE3	MEC100L	49,3	
DCP-G 65-2640/A/ BAQE/4	360	DN 65	3 x 400 V ~ ¹	2910	4,7	4	5,5	-	8,2	IE3	MEC112M	89,4	
DCP-G 65-3400/A/ BAQE/5,5	360	DN 65	3 x 400 V ~ ¹	2913	6,6	5,5	7,5	-	10,2	IE3	MEC132S	114,2	
DCP-G 65-4100/A/ BAQE/7,5	360	DN 65	3 x 400 V ~ ¹	2900	8,7	7,5	10	-	14,4	IE3	MEC132S	113,9	

¹ star start-up possible (A)

MODEL	A	B	B1	B2	B max	C	D	D1	D2	D3	D4	no. of holes	H	H1	H2	L	L1	L2	M	N	PACKING DIMENSIONS			VOL. (m ³)	WEIGHT Kg
																					L/A	L/B	H		
																					DCP-G 65-1470/A/ BAQE/1,5	330	569		
DCP-G 65-1900/A/ BAQE/2,2	330	569	315	320	635	639	65	122	185	145	18	4	583	107	100	358	151	207	M16	180	358	635	574	0,13	140
DCP-G 65-2280/A/ BAQE/3	330	569	315	320	635	639	65	122	185	145	18	4	653	107	100	358	151	207	M16	180	358	635	632	0,14	167
DCP-G 65-2640/A/ BAQE/4	330	569	315	320	635	639	65	122	185	145	18	4	635	107	100	358	151	207	M16	180	358	635	647	0,15	151
DCP-G 65-3400/A/ BAQE/5,5	330	569	324	329	635	639	65	122	185	145	18	4	716	107	100	358	151	207	M16	180	358	635	736	0,17	202
DCP-G 65-4100/A/ BAQE/7,5	330	569	324	329	653	639	65	122	185	145	18	4	783	107	100	358	151	207	M17	180	358	653	736	0,17	248

DCP-G 65 2 POLES - IN-LINE PUMPS

Pumped liquid temperature range: from -10 °C to +140 °C - Maximum ambient temperature: +40 °C



The performance curves are based on kinematic viscosity values = 1 mm²/s and density equal to 1000 kg/m³. Curve tolerance according to ISO 9906.

For the MEI index refer to the hydraulic data of the individual pump.

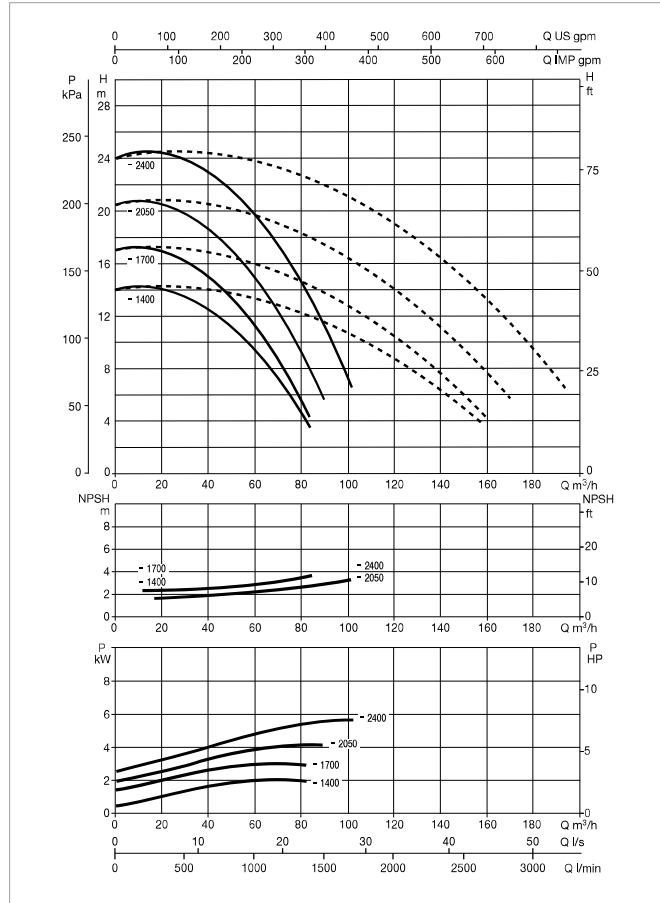
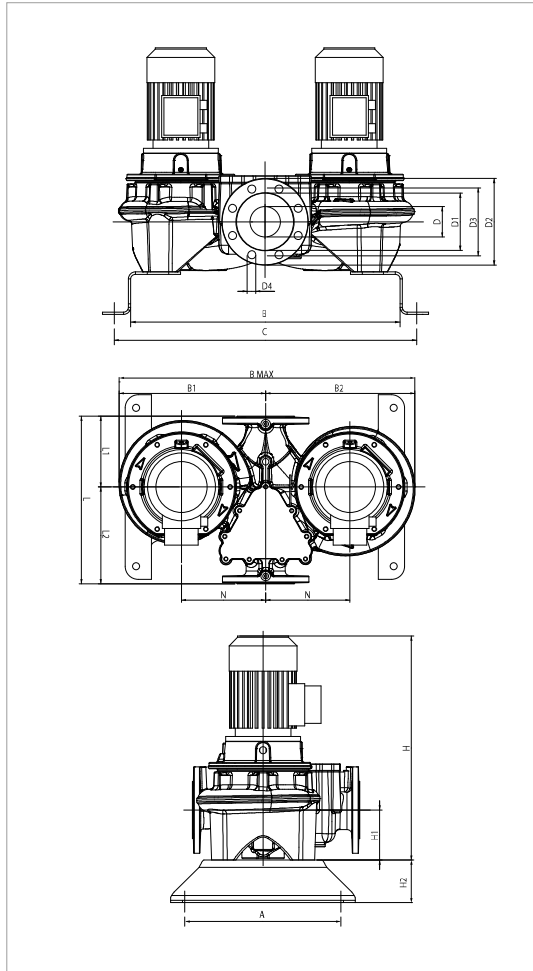
MODEL	CENTRE DISTANCE	PUMP CONNECTIONS	ELECTRICAL DATA								
			POWER INPUT 50 Hz	n r.p.m.	P1 MAX KW	P2 NOMINAL		In A 400 V	MOTOR TYPE	MOTOR SIZE	I st. A
						kW	HP				
DCP-G 65-4700/A/BAQE/11	475	DN 65	3 x 400 V ~ ¹	2940	12	11	15	19,9	IE3	MEC160M	147,4
DCP-G 65-5500/A/BAQE/15	475	DN 65	3 x 400 V ~ ¹	2943	17	15	20	26,8	IE3	MEC160M	204
DCP-G 65-6150/A/BAQE/18,5	475	DN 65	3 x 400 V ~ ¹	2947	21	18,5	25	33	IE3	MEC160L	262,4
DCP-G 65-7350/A/BAQE/22	475	DN 65	3 x 400 V ~ ¹	2961	24,5	22	30	38,1	IE3	MEC180M	330,6
DCP-G 65-9250/A/BAQE/30	475	DN 65	3 x 400 V ~ ¹	2950	33	30	40	52,1	IE3	MEC200L	468

¹ star start-up possible (Δ)

MODEL	A	B	B1	B2	B max	C	D	D1	D2	D3	D4	no. of holes	H	H1	H2	L	L1	L2	M	N	PACKING DIMENSIONS			VOL. (m ³)	WEIGHT Kg
																					L/A	L/B	H		
																					DCP-G 65-4700/A/BAQE/11	330	649		
DCP-G 65-5500/A/BAQE/15	330	649	389	397	786	719	65	122	185	145	18	895	125	100	475	177	298	M16	220	475	786	895	0,33	420	
DCP-G 65-6150/A/BAQE/18,5	330	649	389	397	786	719	65	122	185	145	18	939	125	100	475	177	298	M16	220	475	786	950	0,35	450	
DCP-G 65-7350/A/BAQE/22	330	649	389	397	786	719	65	122	185	145	18	970	125	100	475	177	298	M16	220	475	786	970	0,36	521	
DCP-G 65-9250/A/BAQE/30	330	649	414	422	836	719	65	122	185	145	18	1000	125	100	475	177	298	M16	220	475	836	990	0,39	745	

DCP-G 80 2 POLES - IN-LINE PUMPS

Pumped liquid temperature range: from -10 °C to +140 °C - Maximum ambient temperature: +40 °C



The performance curves are based on kinematic viscosity values = 1 mm²/s and density equal to 1000 kg/m³. Curve tolerance according to ISO 9906.

For the MEI index refer to the hydraulic data of the individual pump.

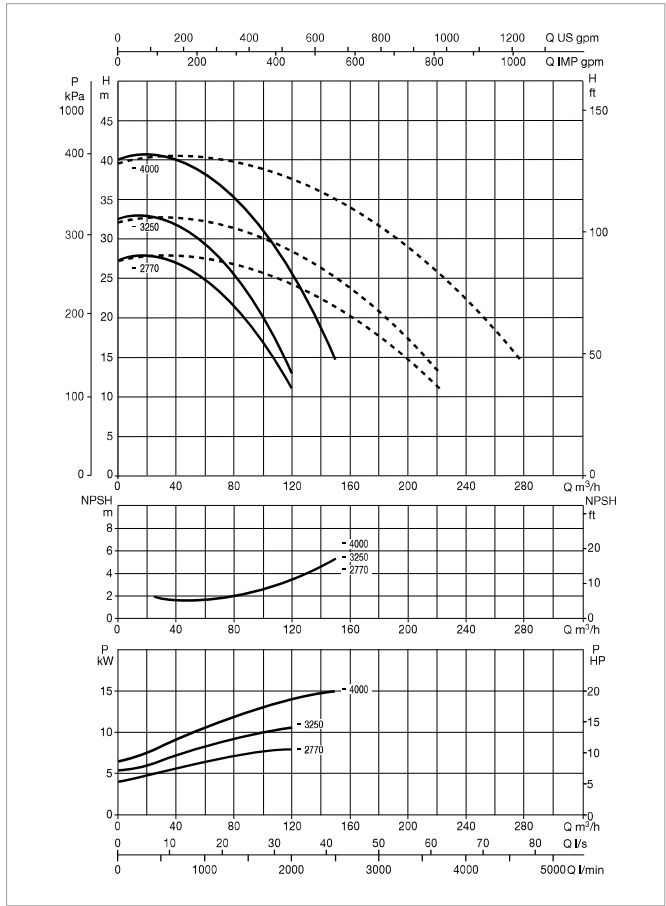
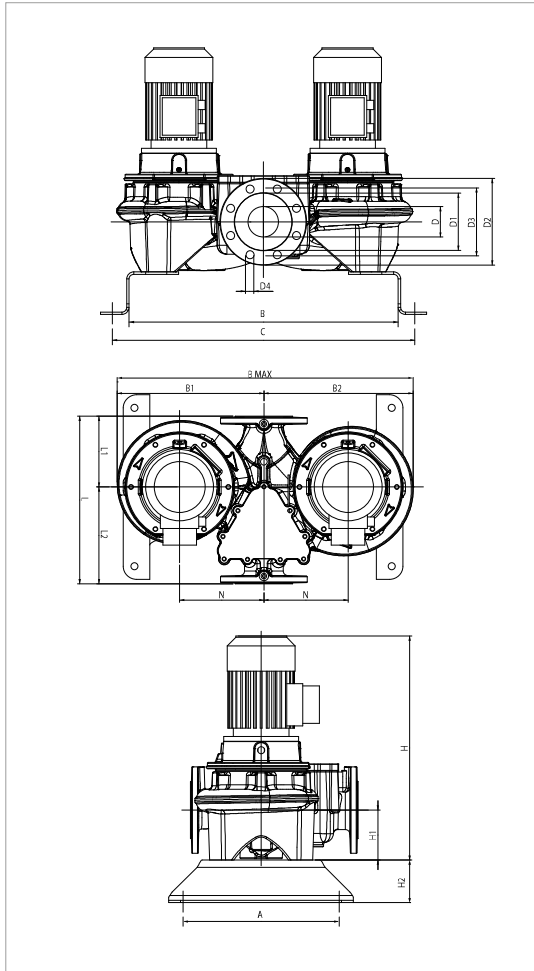
MODEL	CENTRE DISTANCE	PUMP CONNECTIONS	ELECTRICAL DATA									
			POWER INPUT 50 Hz	n r.p.m.	P1 MAX KW	P2 NOMINAL		In A		MOTOR TYPE	MOTOR SIZE	I st. A
						KW	HP	230 V	400 V			
DCP-G 80-1400/A/BAQE/2,2	360	DN 80	3x230-400 V ~	2874	3	2,2	3	7,97	4,6	IE3	MEC90L	73,3/42,3
DCP-G 80-1700/A/BAQE/3	360	DN 80	3 x 400 V ~ ¹	2880	3,5	3	4	-	5,6	IE3	MEC100L	49,3
DCP-G 80-2050/A/BAQE/4	360	DN 80	3 x 400 V ~ ¹	2914	5	4	5,5	-	8,2	IE3	MEC112M	89,4
DCP-G 80-2400/A/BAQE/5,5	360	DN 80	3 x 400 V ~ ¹	2910	6,4	5,5	7,5	-	10,2	IE3	MEC132S	114,2

¹ star start-up possible (Δ)

MODEL	A	B	B1	B2	B max	C	D	D1	D2	D3	D4	no. of holes	H	H1	H2	L	L1	L2	M	N	PACKING DIMENSIONS			VOL. (m ³)	WEIGHT Kg
																					L/A	L/B	H		
																					DCP-G 80-1400/A/ BAQE/2,2	330	580		
DCP-G 80-1700/A/ BAQE/3	330	580	305	310	615	650	80	137	200	160	18	655	115	100	360	165	195	M16	180	360	615	644	0,14	160	
DCP-G 80-2050/A/ BAQE/4	330	580	305	310	615	650	80	137	200	160	18	637	115	100	360	165	195	M16	180	360	615	659	0,15	140	
DCP-G 80-2400/A/ BAQE/5,5	330	580	327	332	659	650	80	137	200	160	18	718	115	100	360	165	195	M16	180	360	659	748	0,18	194	

DCP-G 80 2 POLES - IN-LINE PUMPS

Pumped liquid temperature range: from -10 °C to +140 °C - Maximum ambient temperature: +40 °C



The performance curves are based on kinematic viscosity values = 1 mm²/s and density equal to 1000 kg/m³. Curve tolerance according to ISO 9906.

For the MEI index refer to the hydraulic data of the individual pump.

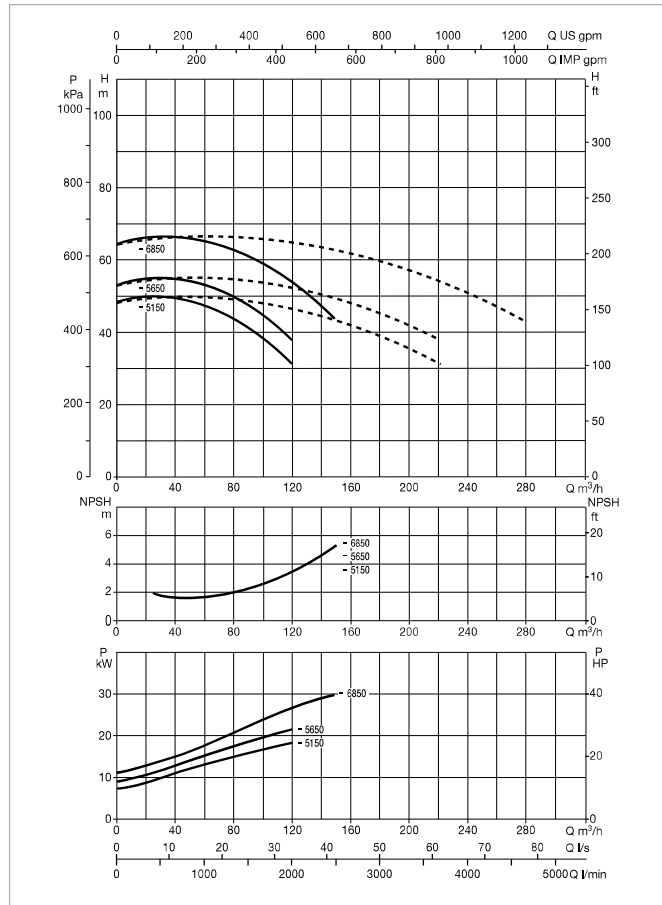
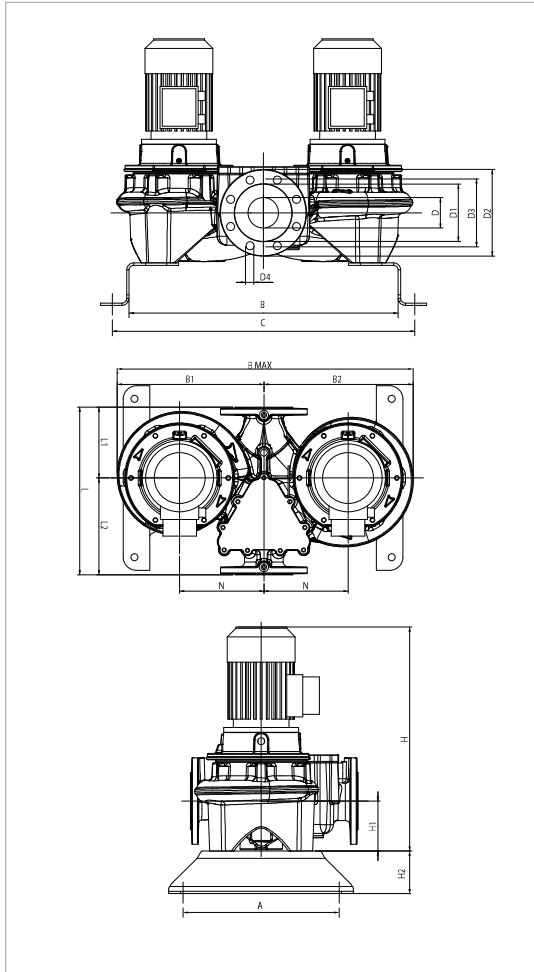
MODEL	CENTRE DISTANCE	PUMP CONNECTIONS	ELECTRICAL DATA								
			POWER INPUT 50 Hz	n r.p.m.	P1 MAX KW	P2 NOMINAL		In A 400 V	MOTOR TYPE	MOTOR SIZE	I st. A
						kW	HP				
DCP-G 80-2770/A/ BAQE/7,5	440	DN 80	3 x 400 V ~ ¹	2905	8,7	7,5	10	14,4	IE3	MEC132S	113,9
DCP-G 80-3250/A/ BAQE/11	440	DN 80	3 x 400 V ~ ¹	2932	12	11	15	19,9	IE3	MEC160M	147,4
DCP-G 80-4000/A/ BAQE/15	440	DN 80	3 x 400 V ~ ¹	2945	17	15	20	26,8	IE3	MEC160M	204

¹ star start-up possible (A)

MODEL	A	B	B1	B2	B max	C	D	D1	D2	D3	D4	no. of holes	H	H1	H2	L	L1	L2	M	N	PACKING DIMENSIONS			VOL. (m ³)	WEIGHT Kg
																					L/A	L/B	H		
																					DCP-G 80-2770/A/BAQE/7,5	330	620		
DCP-G 80-3250/A/BAQE/11	330	620	344	374	738	690	80	137	200	160	18	8	893	115	100	440	165	195	M16	180	440	738	893	0,29	169
DCP-G 80-4000/A/BAQE/15	330	620	344	374	738	690	80	137	200	160	18	8	893	115	100	440	165	195	M16	180	440	738	893	0,29	175

DCP-G 80 2 POLES - IN-LINE PUMPS

Pumped liquid temperature range: from -10 °C to +140°C - Maximum ambient temperature: +40 °C



The performance curves are based on kinematic viscosity values = 1 mm²/s and density equal to 1000 kg/m³. Curve tolerance according to ISO 9906.

For the MEI index refer to the hydraulic data of the individual pump.

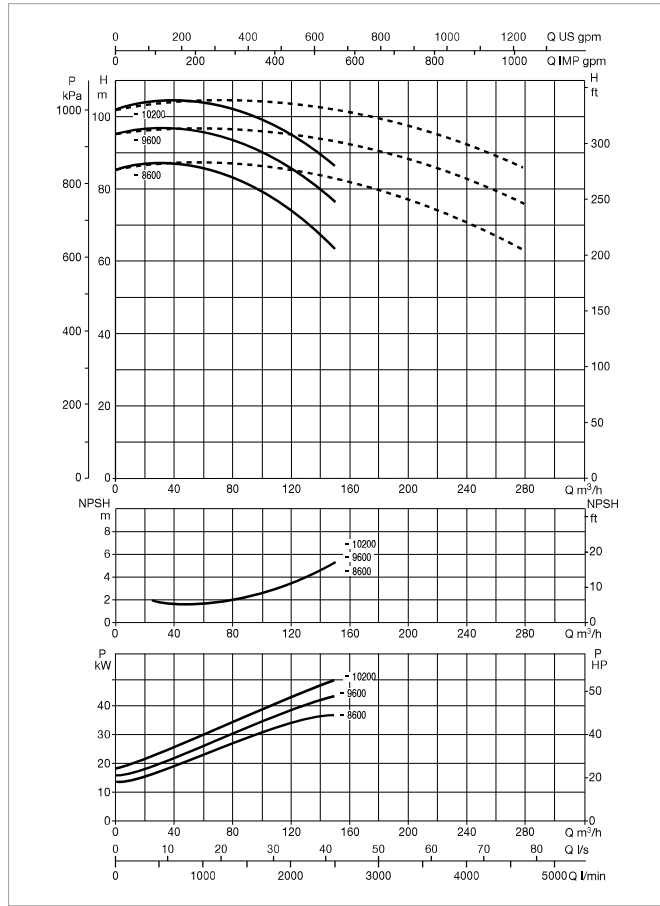
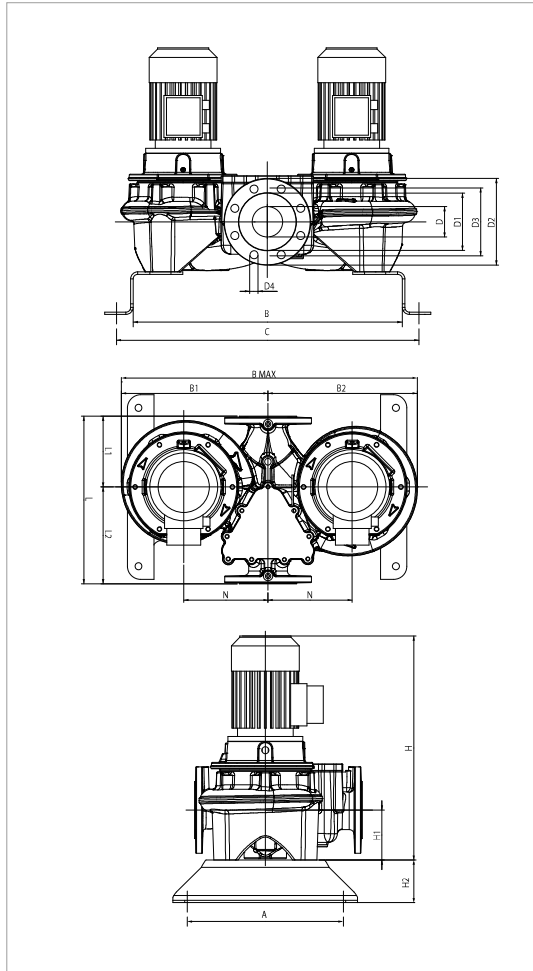
MODEL	CENTRE DISTANCE	PUMP CONNECTIONS	ELECTRICAL DATA								
			POWER INPUT 50 Hz	n r.p.m.	P1 MAX KW	P2 NOMINAL		In A 400 V	MOTOR TYPE	MOTOR SIZE	I st. A
						kW	HP				
DCP-G 80-5150/A/BAQE/18,5	500	DN 80	3 x 400 V ~ ¹	2943	21	18,5	25	33	IE3	MEC160L	262,4
DCP-G 80-5650/A/BAQE/22	500	DN 80	3 x 400 V ~ ¹	2967	24	22	30	38,1	IE3	MEC180M	330,6
DCP-G 80-6850/A/BAQE/30	500	DN 80	3 x 400 V ~ ¹	2951	33	30	40	52,1	IE3	MEC200L	468

¹ star start-up possible (A)

MODEL	A	B	B1	B2	B max	C	D	D1	D2	D3	D4	no. of holes	H	H1	H2	L	L1	L2	M	N	PACKING DIMENSIONS			VOL. (m ³)	WEIGHT Kg
																					L/A	L/B	H		
																					DCP-G 80-5150/A/BAQE/18,5	362	662		
DCP-G 80-5650/A/BAQE/22	362	662	405	415	820	732	80	137	200	160	18	8	974	115	100	500	180	260	M16	200	500	820	974	0,4	353
DCP-G 80-6850/A/BAQE/30	362	662	426	394	862	732	80	137	200	160	18	8	1064	115	100	500	180	260	M16	200	500	862	1054	0,45	485

DCP-G 80 2 POLES - IN-LINE PUMPS

Pumped liquid temperature range: from -10 °C to +140 °C - Maximum ambient temperature: +40 °C



The performance curves are based on kinematic viscosity values = 1 mm²/s and density equal to 1000 kg/m³. Curve tolerance according to ISO 9906.

For the MEI index refer to the hydraulic data of the individual pump.

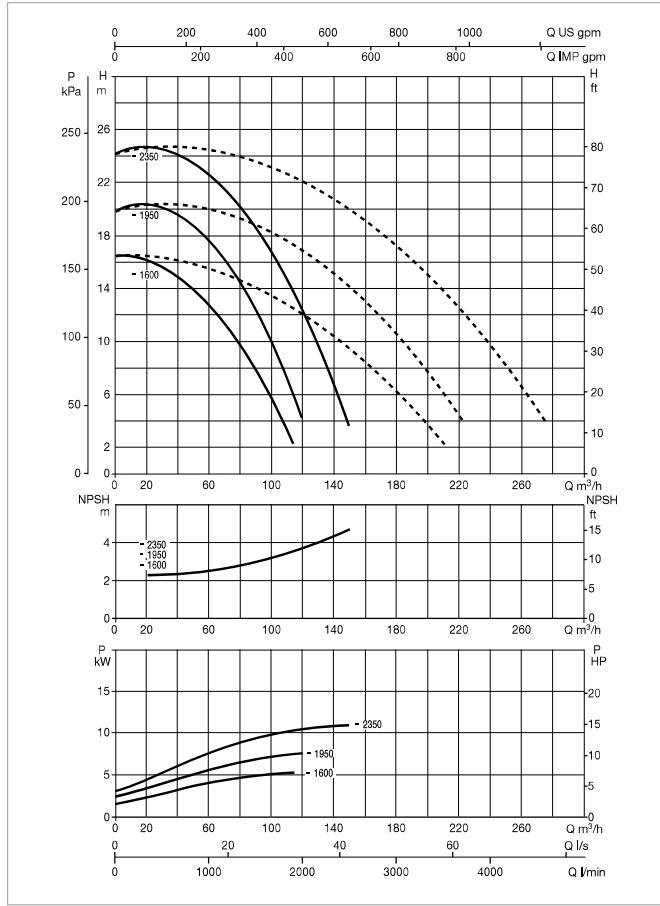
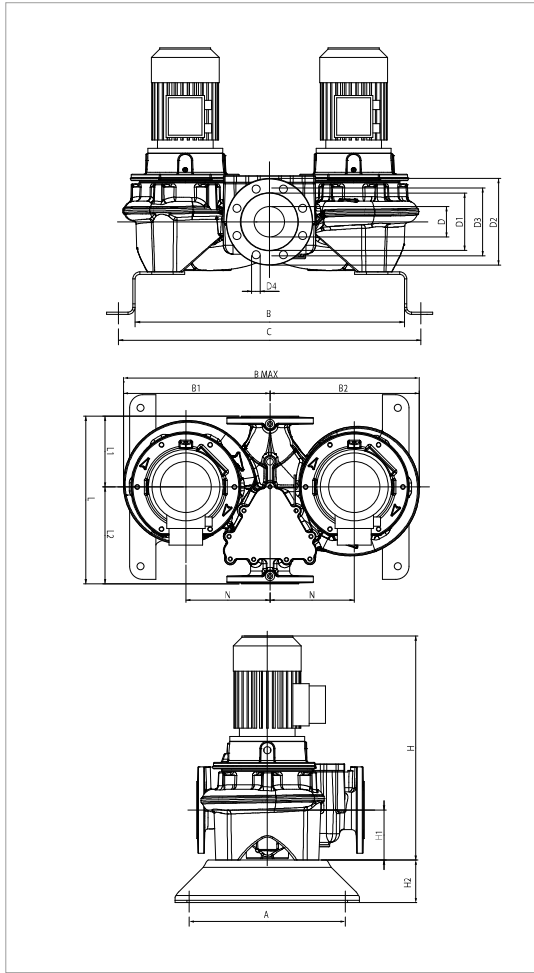
MODEL	CENTRE DISTANCE	PUMP CONNECTIONS	ELECTRICAL DATA								
			POWER INPUT 50 Hz	n r.p.m.	P1 MAX KW	P2 NOMINAL		In A 400 V	MOTOR TYPE	MOTOR SIZE	I st. A
						kW	HP				
DCP-G 80-8600/A/BAQE/37	620	DN 80	3 x 400 V ~ ¹	2967	42	37	50	62,6	IE3	MEC200L	567
DCP-G 80-9600/A/BAQE/45	620	DN 80	3 x 400 V ~ ¹	2966	49	45	60	78,4	IE3	MEC225M	630,8
DCP-G 80-10200/A/BAQE/55	620	DN 80	3 x 400 V ~ ¹	2979	59	55	75	94,6	IE3	MEC250M	684

¹ star start-up possible (A)

MODEL	A	B	B1	B2	B max	C	D	D1	D2	D3	D4	no. of holes	H	H1	H2	L	L1	L2	M	N	PACKING DIMENSIONS			VOL. (m ³)	WEIGHT Kg
																					L/A	L/B	H		
																					DCP-G 80-8600/A/BAQE/37	500	804		
DCP-G 80-9600/A/BAQE/45	500	804	530	540	1070	924	80	137	200	160	18	1096	115	100	620	220	280	M16	235	620	1070	1091	0,72	673	
DCP-G 80-10200/A/BAQE/55	500	804	567	577	1144	924	80	137	200	160	18	1216	115	100	620	220	280	M16	235	620	1144	1216	0,86	939	

DCP-G 100 2 POLES - IN-LINE PUMPS

Pumped liquid temperature range: from -10 °C to +140 °C - Maximum ambient temperature: +40 °C



The performance curves are based on kinematic viscosity values = 1 mm²/s and density equal to 1000 kg/m³. Curve tolerance according to ISO 9906.

For the MEI index refer to the hydraulic data of the individual pump.

MODEL	CENTRE DISTANCE	PUMP CONNECTIONS	ELECTRICAL DATA								
			POWER INPUT 50 Hz	n r.p.m.	P1 MAX KW	P2 NOMINAL		In A 400 V	MOTOR TYPE	MOTOR SIZE	I st. A
						KW	HP				
DCP-G 100-1600/A/BAQE/4	500	DN 100	3 x 400 V ~ ¹	2918	5,3	4	5,5	8,2	IE3	MEC112M	89,4
DCP-G 100-1950/A/BAQE/5,5	500	DN 100	3 x 400 V ~ ¹	2918	7	5,5	7,5	10,2	IE3	MEC132S	114,2
DCP-G 100-2350/A/BAQE/7,5	500	DN 100	3 x 400 V ~ ¹	2906	8,7	7,5	10	14,4	IE3	MEC132S	113,9

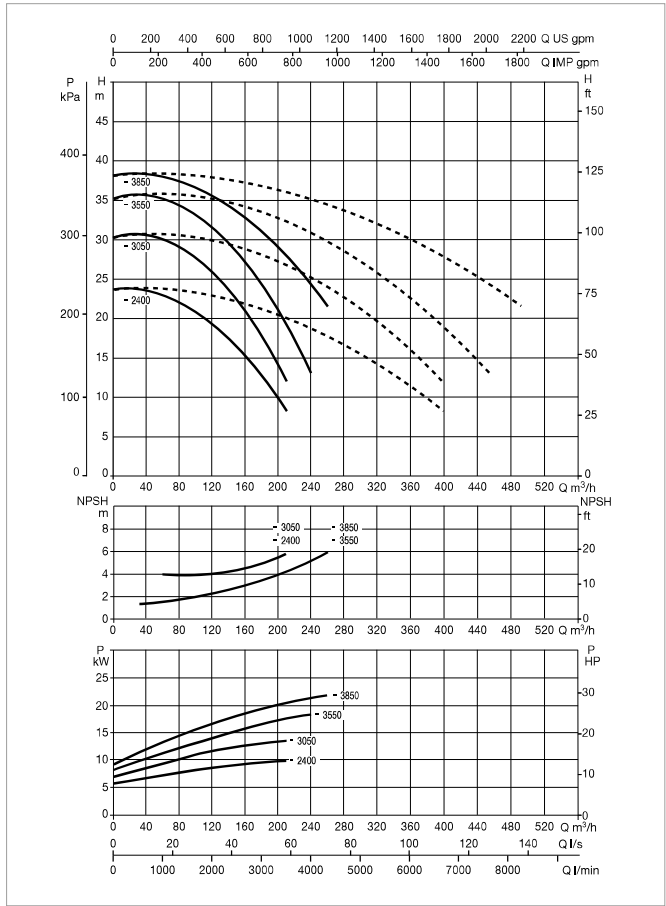
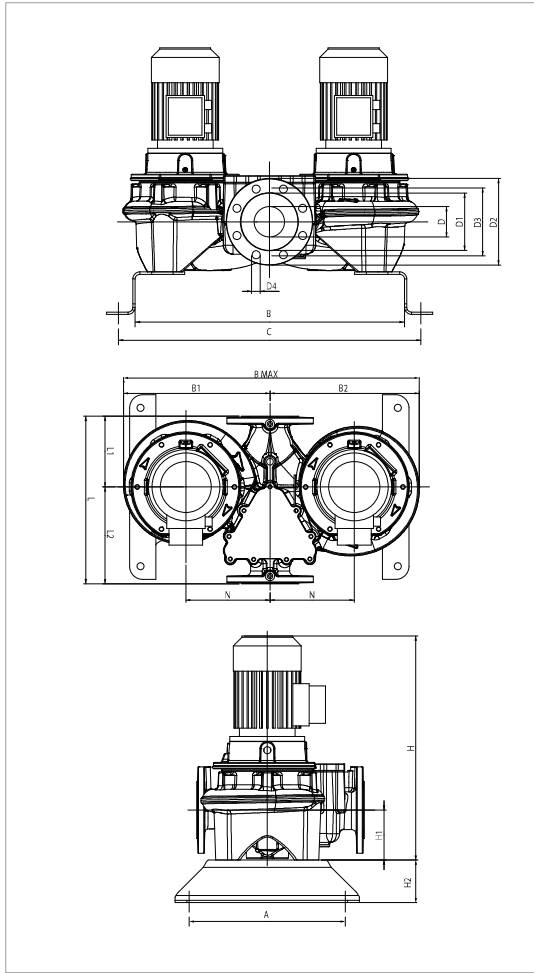
¹ star start-up possible (A)

MODEL	A	B	B1	B2	B max	C	D	D1	D2	D3	D4	no. of holes	H	H1	H2	L	L1	L2	M	N	PACKING DIMENSIONS			VOL. (m ³)	WEIGHT Kg
																					L/A	L/B	H		
DCP-G 100-1600/A/BAQE/4	362	637	330	345	675	717	80	137	200	160	18	8	674	140	100	500	280	340	M16	300	500	675	687	0,23	128
DCP-G 100-1950/A/BAQE/5,5	362	637	335	350	685	717	80	137	200	160	18		755	140	100	500	280	340	M16	300	500	685	775	0,27	127
DCP-G 100-2350/A/BAQE/7,5	362	637	335	350	685	717	80	137	200	160	18		822	140	100	500	280	340	M16	300	500	685	775	0,27	194

DCP-G 100 2 POLES - IN-LINE PUMPS

Pumped liquid temperature range: from -10 °C to +140 °C - Maximum ambient temperature: +40 °C

IN-LINE PUMPS



The performance curves are based on kinematic viscosity values = 1 mm²/s and density equal to 1000 kg/m³. Curve tolerance according to ISO 9906.

For the MEI index refer to the hydraulic data of the individual pump.

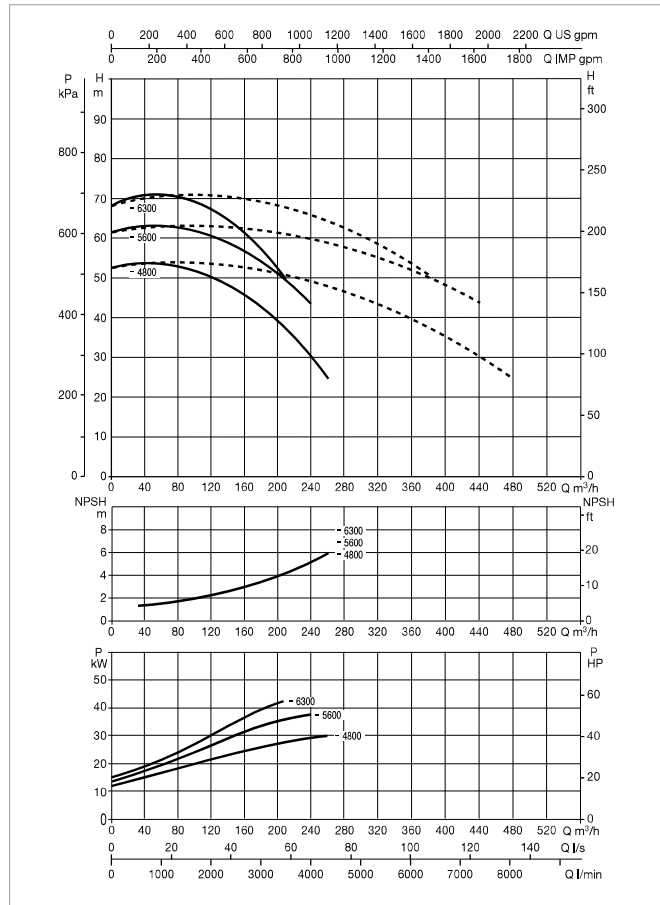
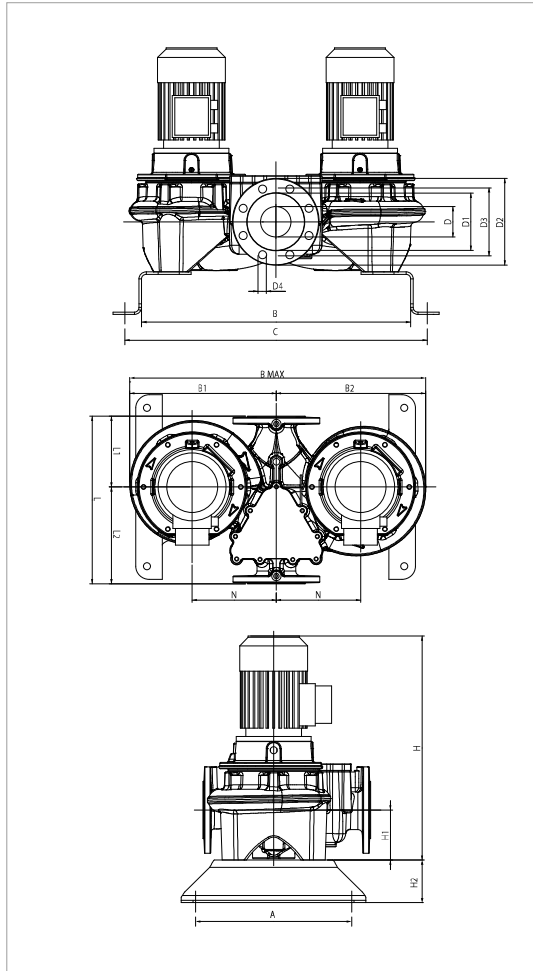
MODEL	CENTRE DISTANCE	PUMP CONNECTIONS	ELECTRICAL DATA								
			POWER INPUT 50 Hz	n r.p.m.	P1 MAX KW	P2 NOMINAL		In A 400 V	MOTOR TYPE	MOTOR SIZE	I st. A
						kW	HP				
DCP-G 100-2400/A/BAQE/11	550	DN 100	3 x 400 V ~ 1	2940	12	11	15	19,9	IE3	MEC160M	147,4
DCP-G 100-3050/A/BAQE/15	550	DN 100	3 x 400 V ~ 1	2941	17	15	20	26,8	IE3	MEC160M	204
DCP-G 100-3550/A/AQE/18,5	550	DN 100	3 x 400 V ~ 1	2948	21	18,5	25	33	IE3	MEC160L	262,4
DCP-G 100-3850/A/BAQE/22	550	DN 100	3 x 400 V ~ 1	2973	24	22	30	38,1	IE3	MEC180M	330,6

¹ star start-up possible (A)

MODEL	A	B	B1	B2	B max	C	D	D1	D2	D3	D4	no. of holes	H	H1	H2	L	L1	L2	M	N	PACKING DIMENSIONS			VOL. (m ³)	WEIGHT Kg
																					L/A	L/B	H		
																					DCP-G 100-2400/A/BAQE/11	362	733		
DCP-G 100-3050/A/BAQE/15	362	733	395	410	805	813	100	156	220	180	18	915	140	100	550	191	309	M16	200	550	805	915	0,41	313	
DCP-G 100-3550/A/AQE/18,5	362	733	395	410	805	813	100	156	220	180	18	959	140	100	550	191	309	M16	200	550	805	970	0,43	329	
DCP-G 100-3850/A/BAQE/22	362	733	395	410	805	813	100	156	220	180	18	990	140	100	550	191	309	M16	200	550	805	990	0,44	402	

DCP-G 100 2 POLES - IN-LINE PUMPS

Pumped liquid temperature range: from -10 °C to +140 °C - Maximum ambient temperature: +40 °C



The performance curves are based on kinematic viscosity values = 1 mm²/s and density equal to 1000 kg/m³. Curve tolerance according to ISO 9906.

For the MEI index refer to the hydraulic data of the individual pump.

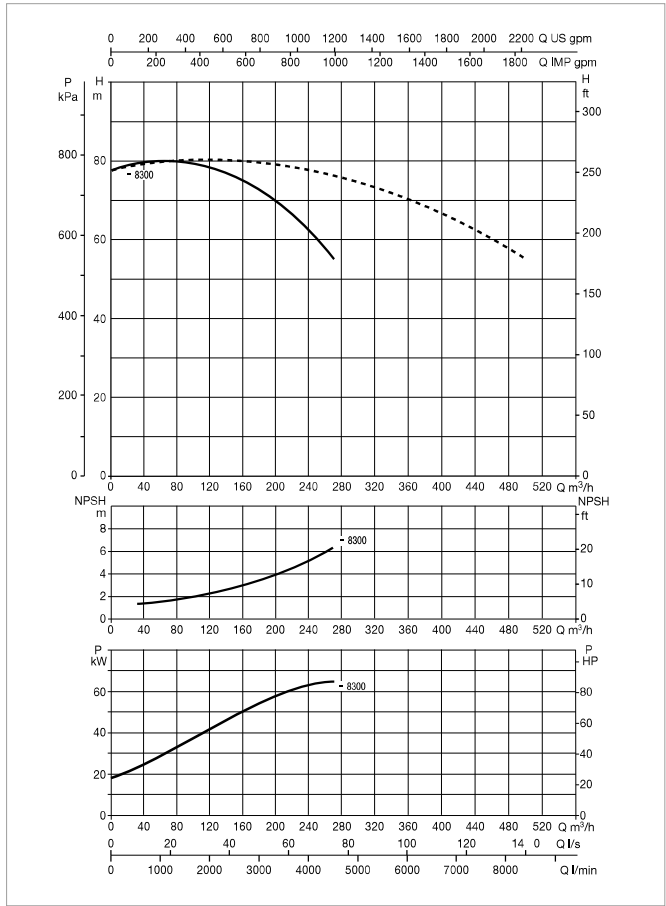
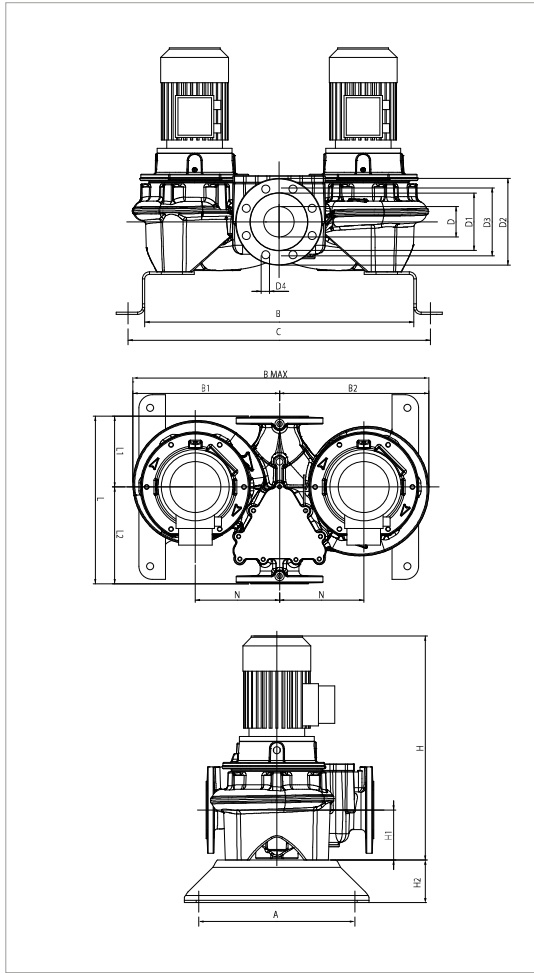
MODEL	CENTRE DISTANCE	PUMP CONNECTIONS	ELECTRICAL DATA								
			POWER INPUT 50 Hz	n r.p.m.	P1 MAX KW	P2 NOMINAL		In A 400 V	MOTOR TYPE	MOTOR SIZE	I st. A
						kW	HP				
DCP-G 100-4800/A/BAQE/30	550	DN 100	3 x 400 V ~ ¹	2966	33	30	40	52,1	IE3	MEC200L	468
DCP-G 100-5600/A/BAQE/37	550	DN 100	3 x 400 V ~ ¹	2975	42	37	50	62,6	IE3	MEC200L	567
DCP-G 100-6300/A/BAQE/45	550	DN 100	3 x 400 V ~ ¹	2975	49	45	60	78,4	IE3	MEC225M	630,8

¹ star start-up possible (A)

MODEL	A	B	B1	B2	B max	C	D	D1	D2	D3	D4	no. of holes	H	H1	H2	L	L1	L2	M	N	PACKING DIMENSIONS			VOL. (m ³)	WEIGHT Kg
																					L/A	L/B	H		
																					DCP-G 100-4800/A/BAQE/30	362	753		
DCP-G 100-5600/A/BAQE/37	362	753	440	450	890	833	100	156	220	180	18	8	1118	140	100	550	221	329	M16	235	550	890	1108	0,54	697
DCP-G 100-6300/A/BAQE/45	362	753	465	475	940	833	100	156	220	180	18	8	1103	140	100	550	221	329	M16	235	550	940	1098	0,57	1062

DCP-G 100 2 POLES - IN-LINE PUMPS

Pumped liquid temperature range: from -10 °C to +140 °C - Maximum ambient temperature: +40 °C



The performance curves are based on kinematic viscosity values = $1 \text{ mm}^2/\text{s}$ and density equal to $1000 \text{ kg}/\text{m}^3$. Curve tolerance according to ISO 9906.

For the MEI index refer to the hydraulic data of the individual pump.

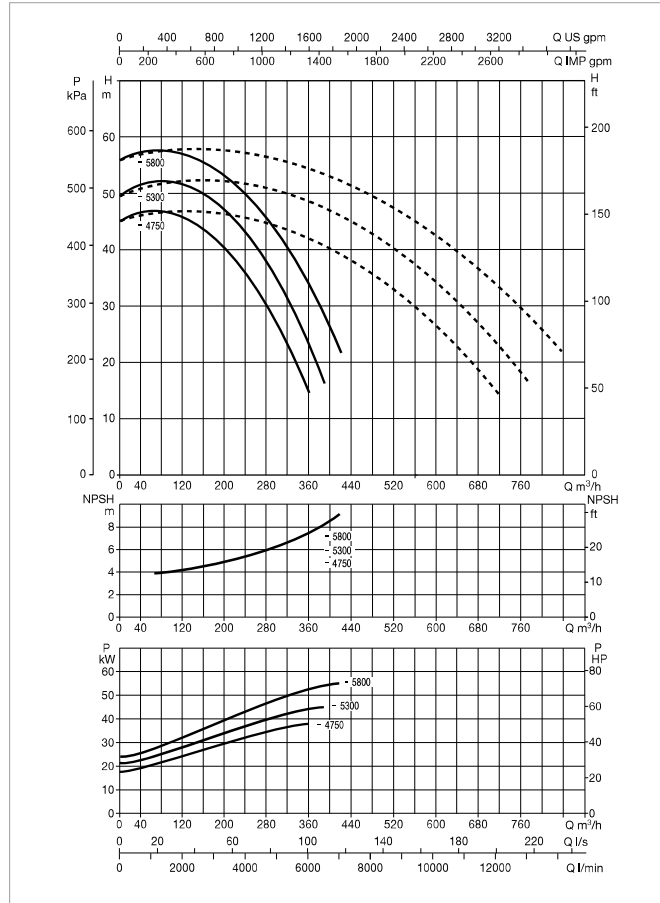
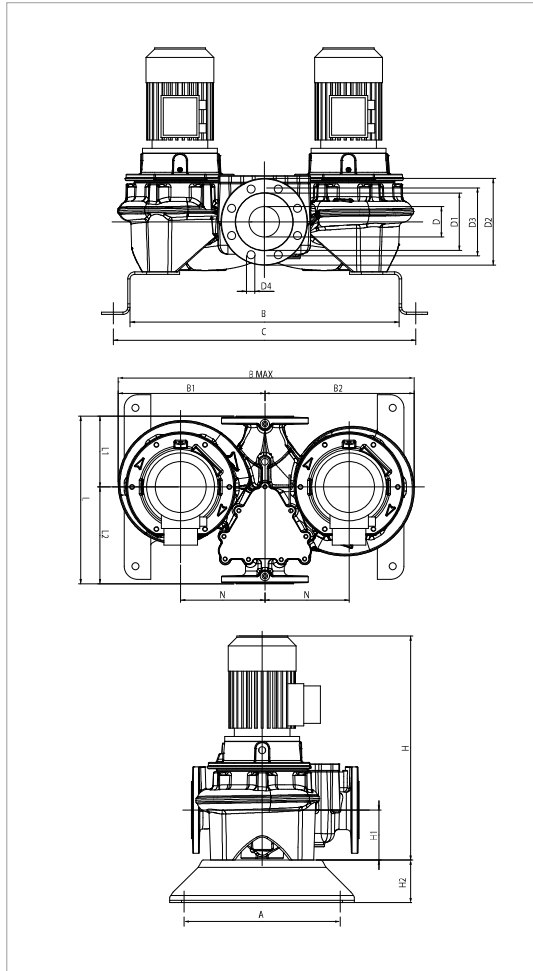
MODEL	CENTRE DISTANCE	PUMP CONNECTIONS	ELECTRICAL DATA								
			POWER INPUT 50 Hz	n r.p.m.	P1 MAX KW	P2 NOMINAL		In A 400 V	MOTOR TYPE	MOTOR SIZE	I st. A
						kW	HP				
DCP-G 100-8300/A/BAQE/55	670	DN 100	3 x 400 V ~ 1	2981	59	55	75	94,6	IE3	MEC250M	684

¹ star start-up possible (A)

MODEL	A	B	B1	B2	B max	C	D	D1	D2	D3	D4	no. of holes	H	H1	H2	L	L1	L2	M	N	PACKING DIMENSIONS			VOL. (m³)	WEIGHT Kg
																					L/A	L/B	H		
DCP-G 100-8300/A/BAQE/55	500	836	563	578	1141	956	100	156	220	180	18	8	1256	140	100	670	221	329	M16	250	670	1141	1256	0,96	1388

DCP-G 125 2 POLES - IN-LINE PUMPS

Pumped liquid temperature range: from -10 °C to +140 °C - Maximum ambient temperature: +40 °C



The performance curves are based on kinematic viscosity values = 1 mm²/s and density equal to 1000 kg/m³. Curve tolerance according to ISO 9906.

For the MEI index refer to the hydraulic data of the individual pump.

MODEL	CENTRE DISTANCE	PUMP CONNECTIONS	ELECTRICAL DATA								
			POWER INPUT 50 Hz	n r.p.m.	P1 MAX KW	P2 NOMINAL		In A 400 V	MOTOR TYPE	MOTOR SIZE	I st. A
						kW	HP				
DCP-G 125-4750/A/BAQE/37	620	DN 125	3 x 400 V ~ ¹	2975	44,7	37	50	62,6	IE3	MEC200L	567
DCP-G 125-5300/A/BAQE/45	620	DN 125	3 x 400 V ~ ¹	2973	53,9	45	60	78,4	IE3	MEC225M	630,8
DCP-G 125-5800/A/BAQE/55	620	DN 125	3 x 400 V ~ ¹	2985	68,2	55	75	94,6	IE3	MEC250M	684

¹ star start-up possible (A)

MODEL	A	B	B1	B2	B max	C	D	D1	D2	D3	D4	no. of holes	H	H1	H2	L	L1	L2	M	N	PACKING DIMENSIONS			VOL. (m ³)	WEIGHT Kg
																					L/A	L/B	H		
																					DCP-G 125-4750/A/BAQE/37	500	810		
DCP-G 125-5300/A/BAQE/45	500	810	515	535	1050	930	100	156	220	180	18	1183	175	100	620	266	404	M16	300	620	1050	1178	0,77	1028	
DCP-G 125-5800/A/BAQE/55	500	810	554	574	1128	930	100	156	220	180	18	1303	175	100	620	266	404	M16	300	620	1128	1303	0,91	1305	

DWA
PUMPS SELECTOR



On-line product selection



DAB PUMPS LTD.
6 Gilberd Court
Newcomen Way
Severalls Business Park
Colchester
Essex
CO4 9WN - UK
salesuk@dwtgroup.com
Tel. +44 0333 777 5010



DAB PUMPS IBERICA S.L.
Calle Verano 18-20-22
28850 - Torrejón de Ardoz - Madrid
Spain
Info.spain@dwtgroup.com
Tel. +34 91 6569545
Fax: + 34 91 6569676



DAB PUMPS SOUTH AFRICA (PTY) LTD
Twenty One Industrial Estate,
16 Purlin Street, Unit B, Warehouse 4
Olifantsfontein - 1666 - South Africa
info.sa@dwtgroup.com
Tel. +27 12 361 3997



DAB PUMPS BV
"Hofveld 6 C1
1702 Groot Bijgaarden - Belgium
info.belgium@dwtgroup.com
Tel. +32 2 4668353



DAB PUMPS HUNGARY KFT.
H-8800
Nagykanizsa, Buda Ernő u.5
Hungary
Tel. +36 93501700



DAB PUMPS (QINGDAO) CO. LTD.
No.40 Kaituo Road, Qingdao Economic & Technological
Development Zone
Qingdao City, Shandong Province - China
PC: 266500
sales.cn@dwtgroup.com
Tel. +86 400 186 8280
Fax +86 53286812210



DAB PUMPS B.V.
Albert Einsteinweg, 4
5151 DL Drunen - Nederland
info.netherlands@dwtgroup.com
Tel. +31 416 387280
Fax +31 416 387299



DAB PUMPS POLAND Sp. z o.o.
Ul. Janka Muzykanta 60
02-188 Warszawa - Poland
polska@dabpumps.com.pl



DAB PUMPS DE MÉXICO, S.A. DE C.V.
Av Amsterdam 101 Local 4
Col. Hipódromo Condesa,
Del. Cuauhtémoc CP 06170
Ciudad de México
Tel. +52 55 6719 0493



OOO DAB PUMPS
Novgorodskaya str. 1, block G
office 308, 127247, Moscow - Russia
info.russia@dwtgroup.com
Tel. +7 495 122 0035
Fax +7 495 122 0036



DAB PUMPEN DEUTSCHLAND GmbH
Tackweg 11
D - 47918 Tönisvorst - Germany
info.germany@dwtgroup.com
Tel. +49 2151 82136-0
Fax +49 2151 82136-36



DAB PUMPS INC.
3226 Benchmark Drive
Ladson, SC 29456 - USA
info.usa@dwtgroup.com
Tel. 1- 843-797-5002
Fax 1-843-797-3366



DAB PUMPS OCEANIA PTY LTD
426 South Gippsland Hwy,
Dandenong South VIC 3175 - Australia
info.oceania@dwtgroup.com
Tel. +61 1300 378 677