

Submersible Sewage pump LSW-XA series



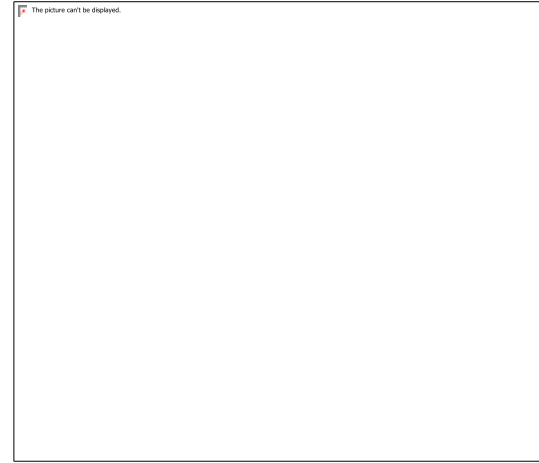
Application



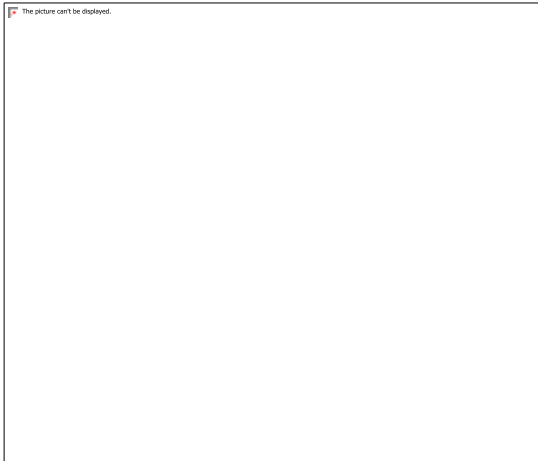
Farm Irrigation



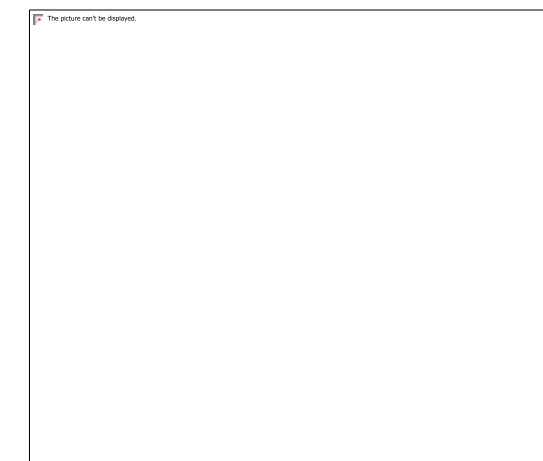
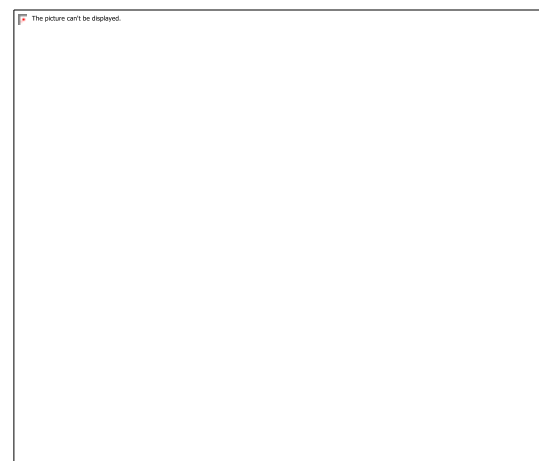
Building sewage



Domestic sewage



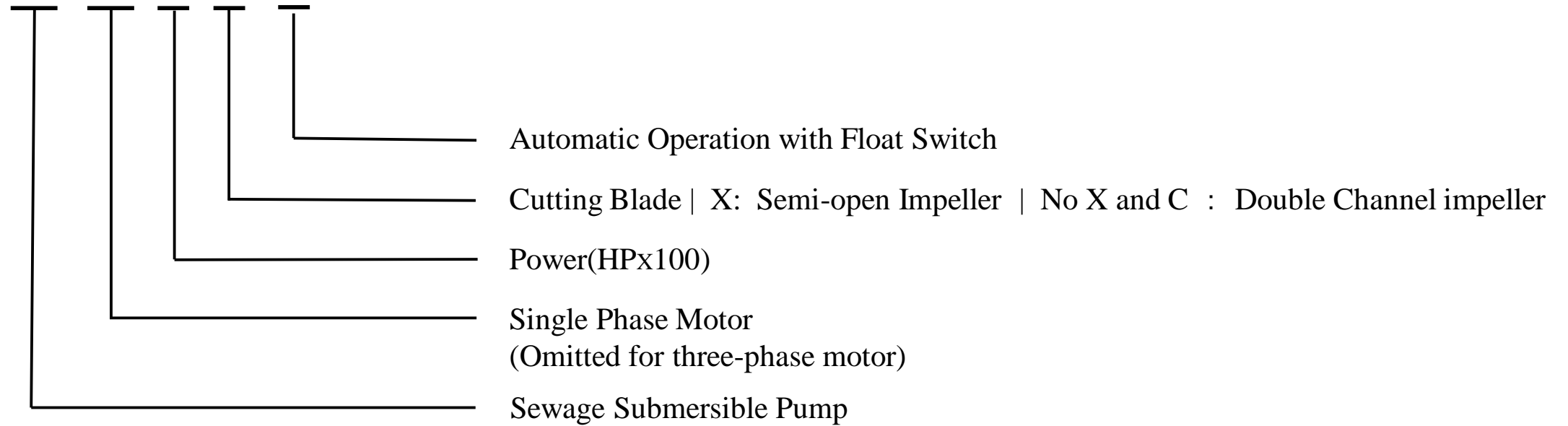
Wastewater Treatment



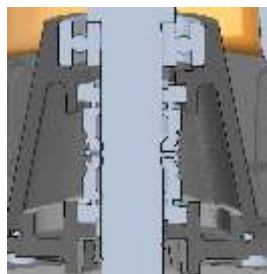
Identification Codes



LSW m 100 C A



Internal structure



- Semi-open vortex impeller
- Non-clogging
- Double-sided mechanical seal, safe and reliable
- Effectively protect the motor



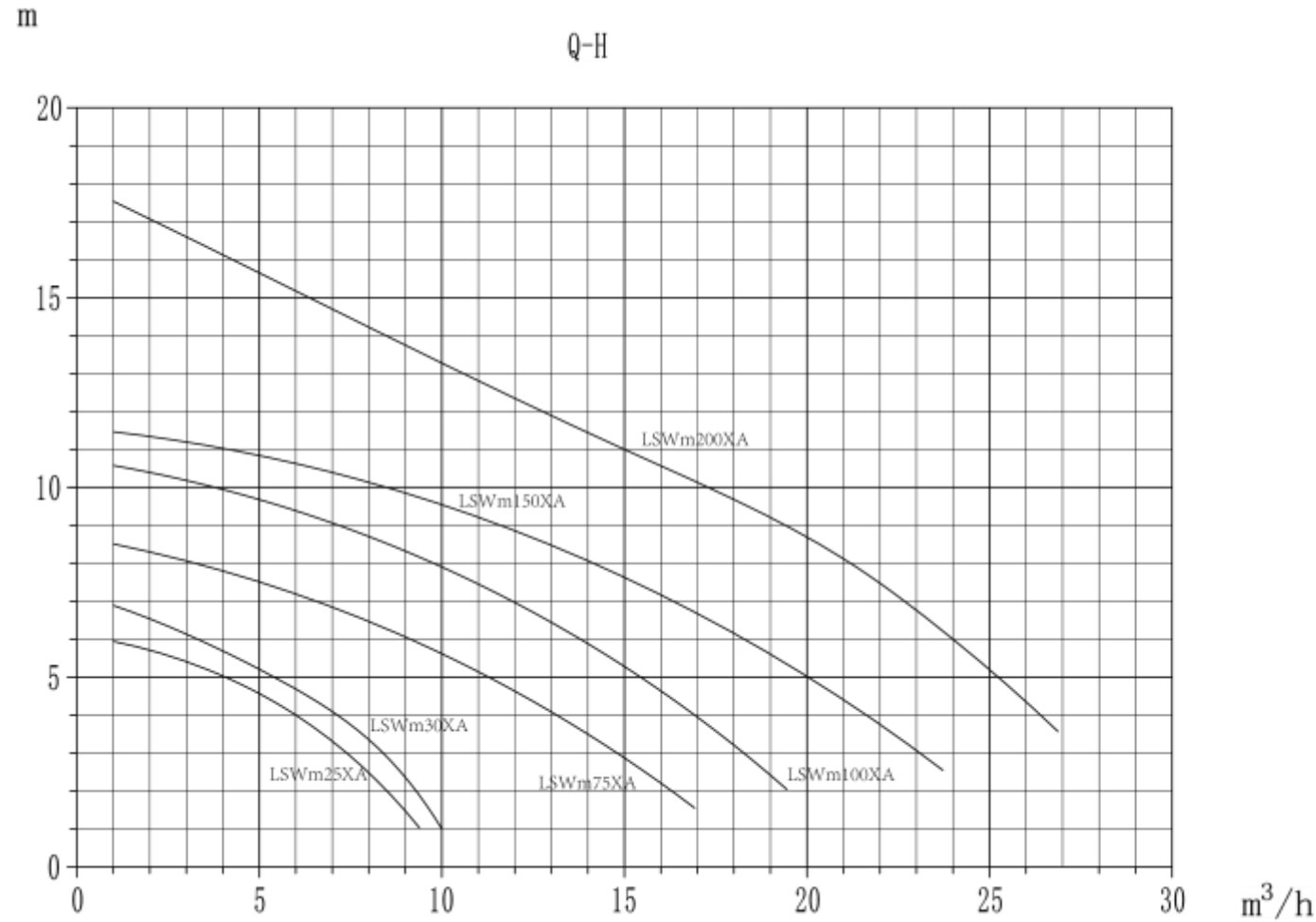
- High efficiency , strong power
- Cold rolled steel sheet, low temperature rise, long service life
- Standard thermal protector for single-phase motors
- Insulation class : F
- Protection class : IPX8



Performance



Model	Power	Volt/Fr e	Outlet	Qmax	Hmax	Max.dia .of particle
	(kw)	V/Hz	(mm)	(m3/h)	(m)	mm
LSWm25XA	0.18	220/50	40	8	7	15
LSWm30XA	0.25	220/50	40	10	7.5	15
LSWm75XA	0.55	220/50	50	17	8.5	25
LSWm100XA	0.75	220/50	50	20	11	25
LSWm150XA	1.1	220/50	50	23	11.5	35
LSWm200XA	1.5	220/50	50	26.5	17	15





THANK YOU