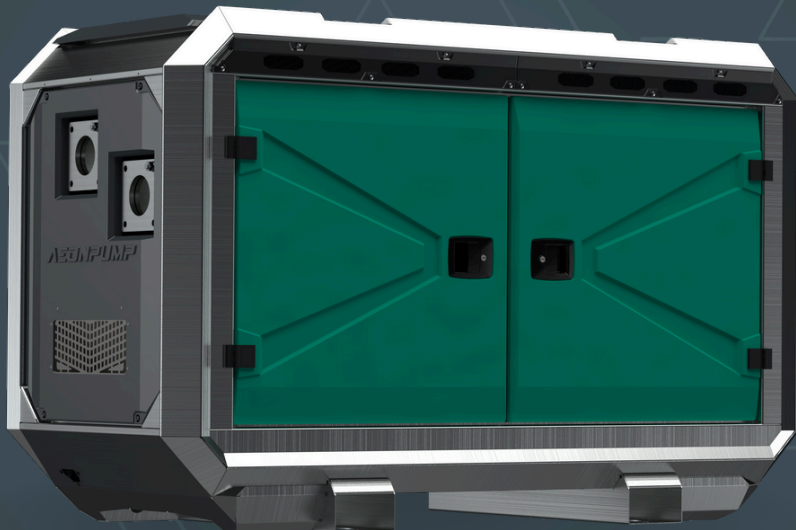


**AEDONPUMP**

# KRAKEN 6D



**DIESEL**

**DRIVEN WELLPOINT  
DEWATERING PUMP**

## FEATURES AND COMPETITIVE EDGE

Type: **Kraken 6D**

Connection size: **6 in x 6 in / 4 in x 4 in**

Frame LxWxH: **2300x1000x1400 mm / 90.6x39.4x55.1 in**

Dry weight: **1500 kg / 3310 lbs**

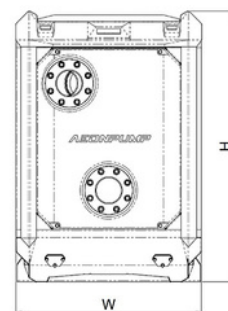
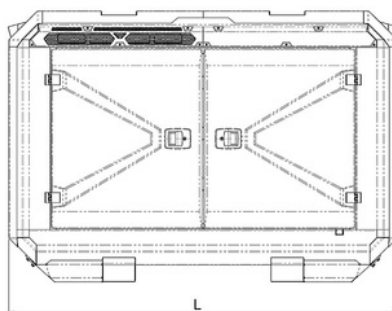
Fuel tank capacity: **200 L / 53 US gal**

Fuel consumption: **1 l/h / 0.264 g/h**

Sound level: **48 dB at 10 m / 33 ft**

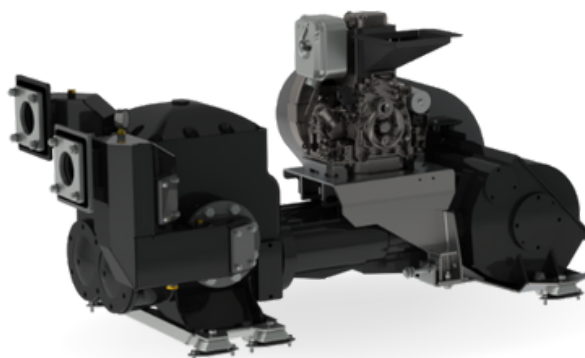
**Designed for heavy duty applications in Wellpoint dewatering:**

- Extended maintenance intervals;
- High-grade parts of superior quality;
- Online telemetry and remote access capability;
- Unsurpassed efficiency values that set the industry standard.



## PUMP TECHNICAL SPECIFICATION

**Pump** Pump type: **Piston pump**  
Max. flow: **95 m<sup>3</sup>/h / 418 US gpm**  
Max. head: **20 m / 66 ft / 28 PSI**  
Max. Suction: **9.6 m / 32 ft**  
Connection size: **6 in**  
Pump body: **Alloyed cast iron**  
Cylinder liners: **Stainless**  
Piston cups: **Leather**  
Piston rods: **Stainless steel**  
Shaft seal: **Gland packing**  
Valve material: **Ruber**  
Stone catcher: **Galvanized steel**





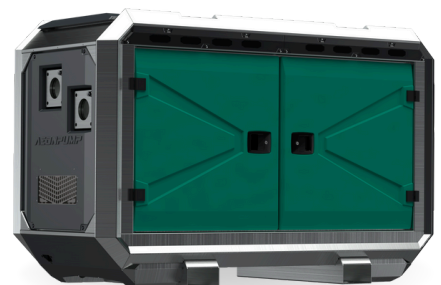
## ENGINE OPTIONS

**Standard**    Model: **Hatz 1D90E**  
Emission standard: **Stage V/ Tier 4f**  
Cylinders: **1**  
Displacement: **0.722 L / 44.06 cu.in.**  
Bore and stroke: **104 x 85 mm / 4.09x3.35 in**  
Maximum power: **5.5 kW / 7.38 hp @1500 rpm**  
Variable speed: **1500 - 1700 rpm**  
Combustion system: **High Pressure Mechanical Direct Injection**



## FRAME

**Silent canopy**    Frame or canopy: **Stackable**  
Material: **Hot dip galvanized Steel**  
Dimensions LxWxH: **2300x1000x1400 mm / 90.6x39.4x55.1 in**  
Lifting point: **Single lifting point**  
Forklift pockets: **Forklift pockets**



## CONTROL PANEL OPTIONS

**Standard**    AEONPUMP Software  
Automatic level control  
Hydrostatic level sensor\*  
SMS alarm system\*  
Online telemetry\*  
Light Assistant\*

\* Optional

