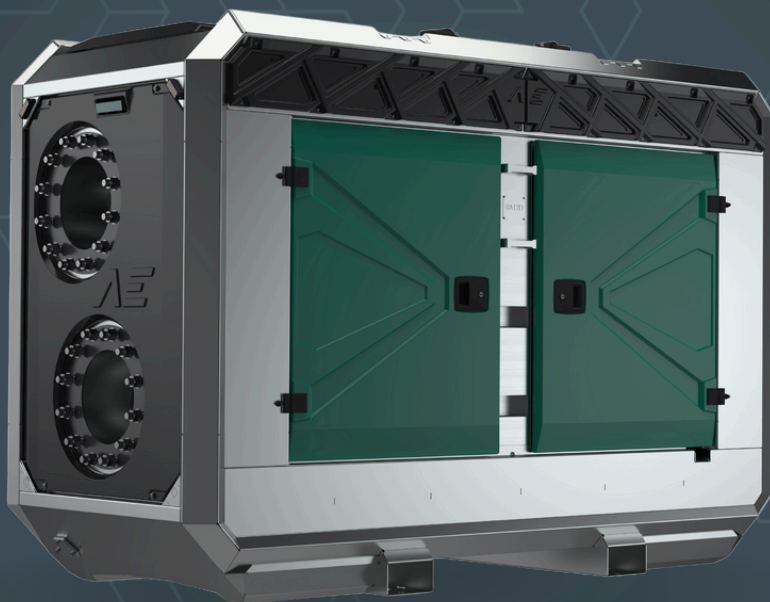


**AEDONPUMP**

# RAPTOR 12D



**DIESEL**

**DRIVEN SEWAGE  
AND DEWATERING PUMP**

## FEATURES AND COMPETITIVE EDGE

Type: **RAPTOR 12D**

Connection size: **12 in x 12 in**

Frame LxWxH: **2700x1150x1820 mm / 106.3x45.3x71.7 in**

Dry weight: **3200 kg / 7060 lbs**

Fuel tank capacity: **400 L / 105 US gal**

Sound level: **72 dB at 10 m / 33 ft**

**Designed for heavy duty applications.**

**Sewage bypass, drainage and dewatering:**

- Extended maintenance intervals;
- High-grade parts of superior quality;
- Online telemetry and remote access capability;
- Unsurpassed efficiency values that set the industry standard.



## PUMP TECHNICAL SPECIFICATION

**Pump** Max. flow: **1044 m<sup>3</sup>/h / 4590 US gpm**

Max. head: **35 m / 115 ft / 50 PSI**

Impeller type: **Screw impeller**

Solids handling: **120 mm / 4.72 in**

Temperature: **max. 40°C / max 104°F**

Casing: **GG25 (0.6025)**

Impeller: **GGG60 (0.7060)**

suction Liner: **GG20 (0.6020)**

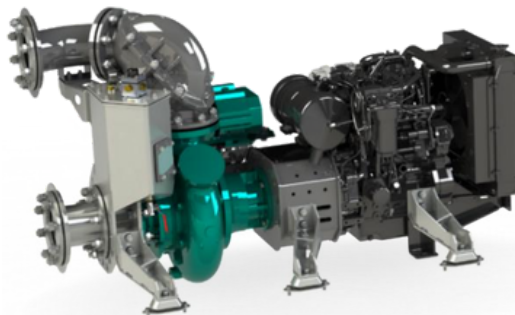
Wear ring: **GG20 (0.6020)**

Shaft: **1.4021**

Shaft sealing: **WC/SiC/NBR**

O-Rings: **NBR**

Suction liner adjustable by external regulation screws

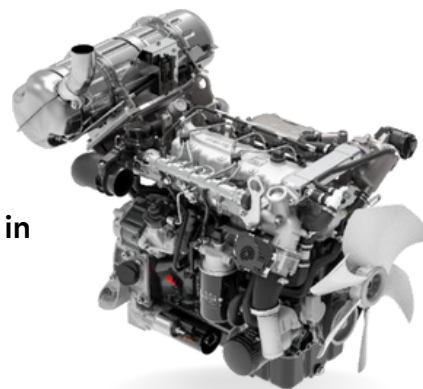


**Priming  
System**

Pump type: **dry claw vacuum pump**  
Air handling capacity: **60 m<sup>3</sup>/h / 35 CFM**  
Max. vacuum: **9.0 m / 30 ft**  
Floatbox: **Hot dip galvanized Steel**  
Non-return valve: **Ductile iron GJS400**  
Check valve ball: **Rubber NBR**

**ENGINE OPTIONS****Standard**

Model: **Hatz 4H50TICD/ Hatz 4H50TIC/ 4H50TI**  
Emission standard: **Stage V/ Tier 4f/ Stage III**  
Cylinders: **4**  
Displacement: **1.952 L / 119.12 cu.in.**  
Aspiration **Turbocharged charge air cooling**  
Bore and stroke mm: **84 x 88 Inches / 3.31x3.46 in**  
Maximum power: **45 kW / 60.35 hp @1700 rpm**  
Variable speed: **1500 - 1800 rpm**  
Combustion system: **Direct injection**  
Exhaust after treatment: **DOC, DPF**



## FRAME OPTIONS

### Silent canopy

Canopy type: **Stackable**

Material: **Hot dip galvanized Steel**

Dimensions LxWxH: **2700x1150x1820 mm / 106.3x45.3x71.7 in**

Lifting point: **Single lifting point**

Forklift pockets: **Installed**



### Open canopy

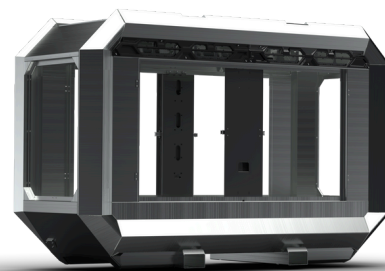
Canopy type: **Stackable**

Material: **Hot dip galvanized Steel**

Dimensions LxWxH: **2700x1150x1820 mm / 106.3x45.3x71.7 in**

Lifting point: **Single lifting point**

Forklift pockets: **Installed**



## CONTROL PANEL OPTIONS

### Standard

AEONPUMP Software

Automatic level control

Hydrostatic level sensor\*

SMS alarm system\*

Online telemetry\*

Dual float switch

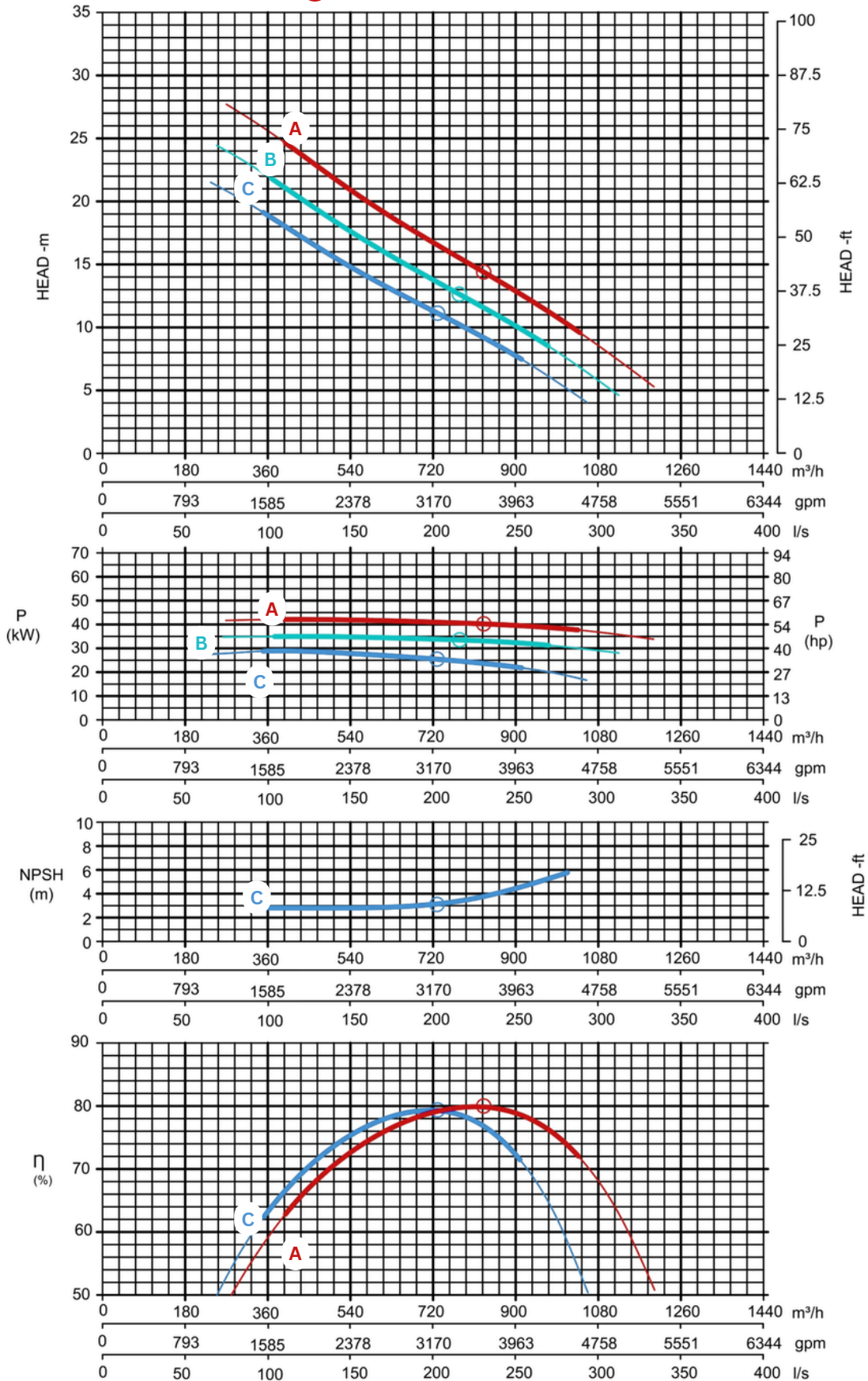
Light Assistant\*

\* Optional





**Curves at Speeds:** A 1700 rpm B 1600 rpm C 1500 rpm



Note: Pump power P include mechanical seal friction and bearing frame losses, from a run in bearing frame.  
(Testing according ISO 9906:2012-38)