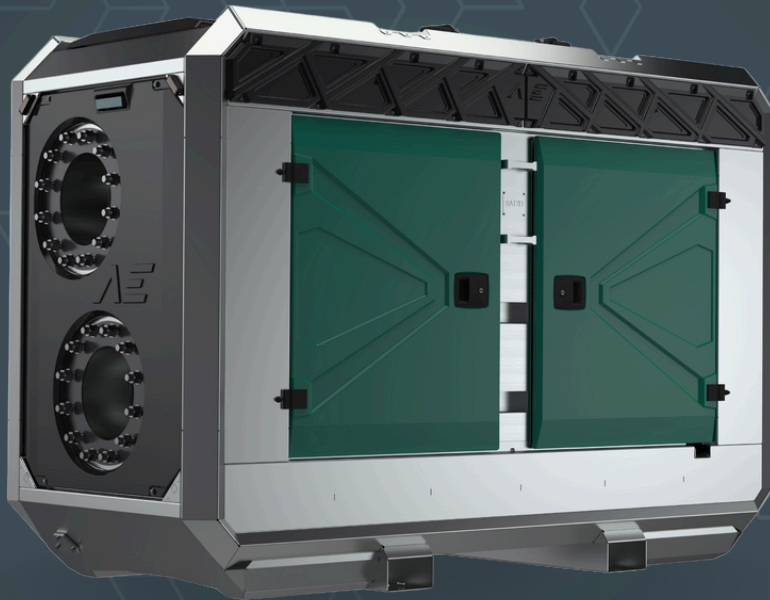


**AEDONPUMP**

# RAPTOR 12D HEAVY



**DIESEL**

**DRIVEN SEWAGE  
AND DEWATERING PUMP**

## FEATURES AND COMPETITIVE EDGE

Type: **RAPTOR 12D HEAVY**  
Connection size: **12 in x 12 in**

Frame LxWxH: **2700x1150x1820 mm / 106.3x45.3x71.7 in**

Dry weight: **3300 kg / 7280 lbs**

Fuel tank capacity: **400 L / 105 US gal**

Fuel consumption: **16.3 L/h / 4.31 gph**

Sound level: **75 dB at 10 m/ 33 ft**

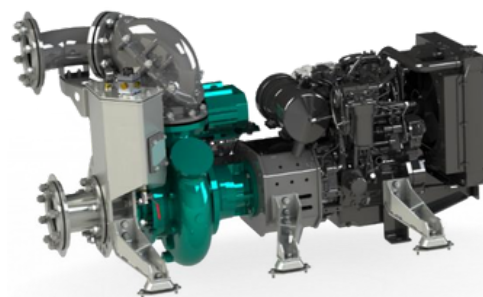
**Designed for heavy duty applications.**  
**Sewage bypass, drainage and dewatering:**

- Extended maintenance intervals;
- High-grade parts of superior quality;
- Online telemetry and remote access capability;
- Unsurpassed efficiency values that set the industry standard.



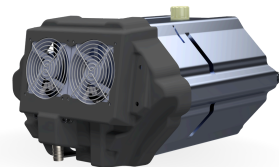
## PUMP TECHNICAL SPECIFICATION

**Pump** Max. flow: **1260 m<sup>3</sup>/h / 5540 US gpm**  
Max. head: **45 m / 150 ft / 64 PSI**  
Impeller type: **Screw impeller**  
Solids handling: **120 mm / 4.72 in**  
Temperature: **max. 40°C / 104°F**  
Casing: **GG25 (0.6025)**  
Impeller: **GGG60 (0.7060)**  
Suction Liner: **GG20 (0.6020)**  
Wear Ring: **GG20 (0.6020)**  
Shaft: **1.4021**  
Shaft Sealing: **WC/SiC/NBR**  
O-Rings: **NBR**  
Suction liner adjustable by external regulation screws



**Priming  
System**

Pump type: **dry claw vacuum pump**  
Air handling capacity: **60 m<sup>3</sup>/h / 35 CFM**  
Max. vacuum: **9.0 m / 30 ft**  
Floatbox: **Hot dip galvanized Steel**  
Non-return valve: **Ductile iron GJS400**  
Check valve ball: **Rubber NBR**

**ENGINE****Standard**

Model: **Perkins 904J-E36TA (AdBlue)**  
Emission standard: **Stage V / Tier 4f**  
Cylinders: **4**  
Displacement: **3.6 L / 219.7 cu.in.**  
Aspiration **Turbocharged after-cooled**  
Bore and stroke mm: **98 x 120 mm / 3.86x4.72 in**  
Maximum power: **65 kW / 87.17 hp @1700 rpm**  
Variable speed: **1500 - 1700 rpm**  
Combustion system: **Direct Injection**  
Exhaust after treatment: **DOC, DPF**

**FRAME OPTIONS****Silent  
canopy**

Canopy type: **Stackable**  
Material: **Hot dip galvanized steel**  
Dimensions LxWxH: **2700x1150x1820 mm / 106.3x45.3x71.7 in**  
Lifting point: **Single lifting point**  
Forklift pockets: **Installed**



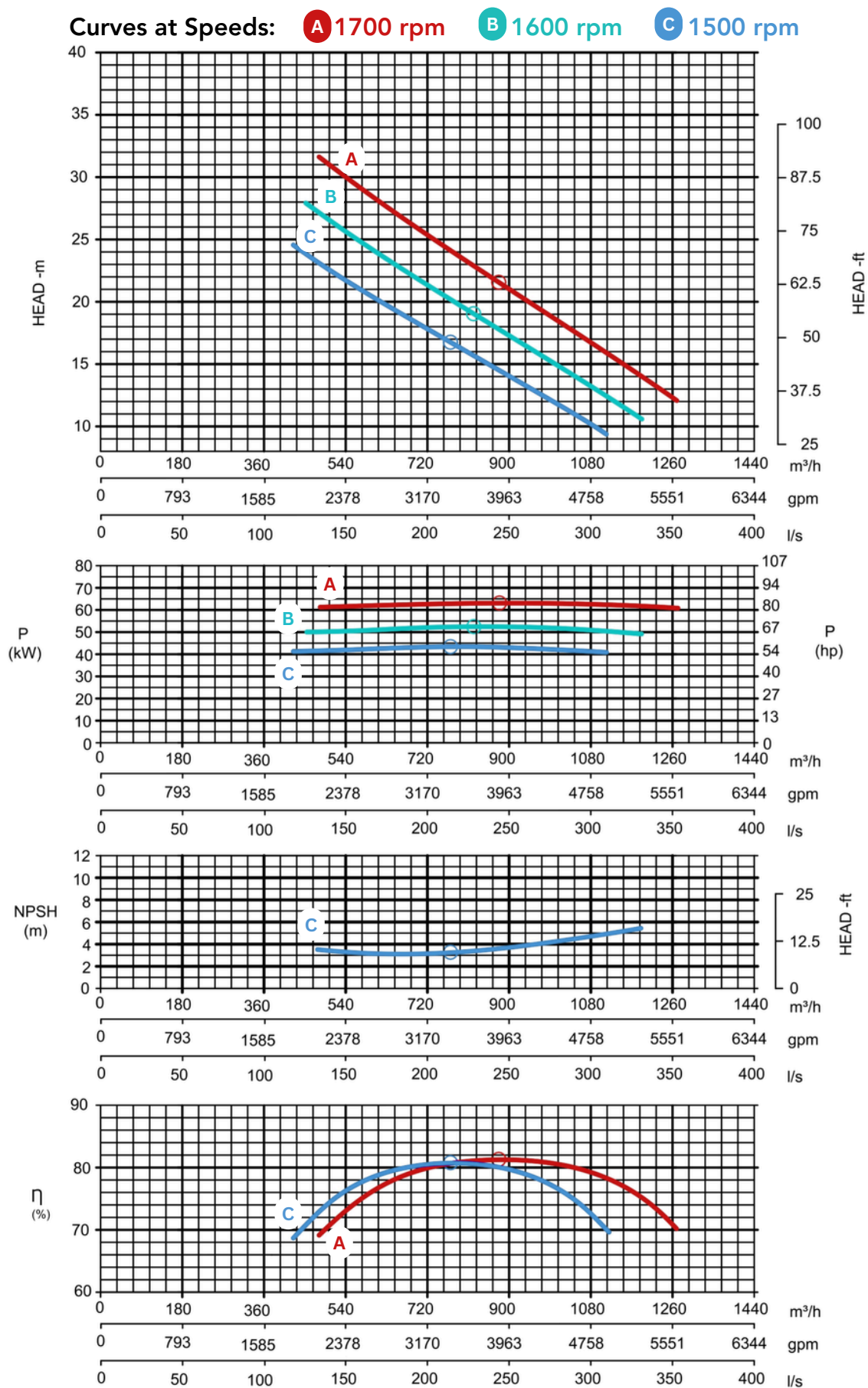
**Open canopy** Canopy type: **Stackable**  
Material: **Hot dip galvanized steel**  
Dimensions LxWxH: **2700x1150x1820 mm / 106.3x45.3x71.7 in**  
Lifting point: **Single lifting point**  
Forklift pockets: **Installed**

## CONTROL PANEL OPTIONS

**Standard** AEONPUMP Software  
Automatic level control  
Hydrostatic level sensor\*  
SMS alarm system\*  
Online telemetry\*  
Dual float switch  
Light Assistant\*

\* Optional





Note: Pump power P include mechanical seal friction and bearing frame losses, from a run in bearing frame.  
(Testing according ISO 9906:2012-38)