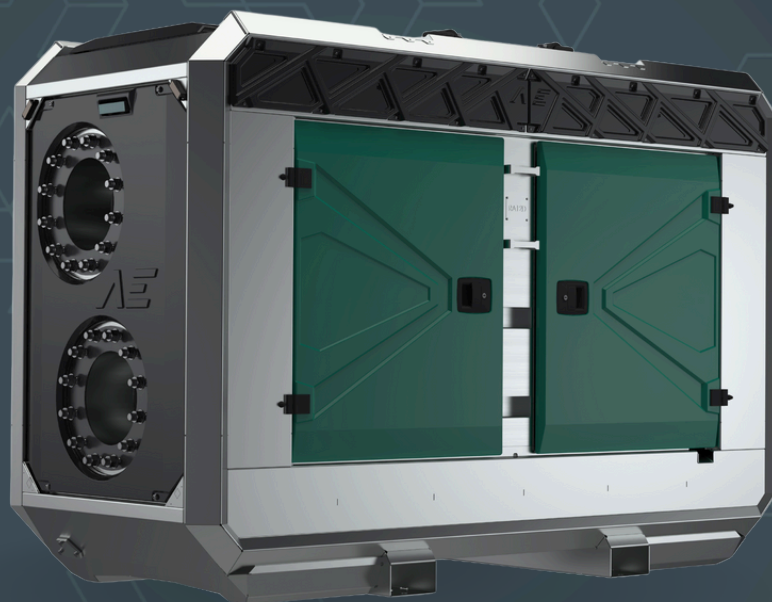


**AEDONPUMP**

# RAPTOR 12E



**ELECTRICALLY**

**DRIVEN SEWAGE  
AND DEWATERING PUMP**



## FEATURES AND COMPETITIVE EDGE

Type: **Raptor 12E**

Connection size: **12 in x 12 in**

Frame LxWxH: **2700x1150x1820 mm /  
106.3x45.3x71.7 in**

Dry weight: **2100 kg / 4630 lbs**

---

**Designed for heavy duty applications.**

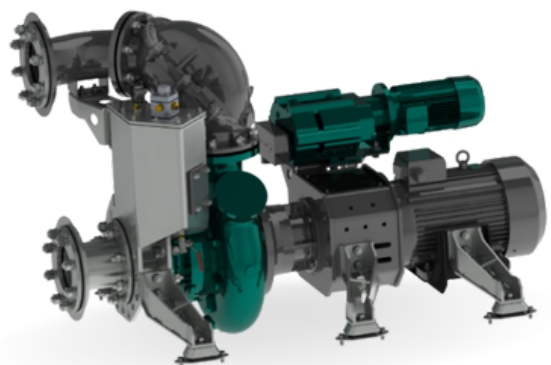
**Sewage bypass, drainage and dewatering:**

- Extended maintenance intervals;
- High-grade parts of superior quality;
- Online telemetry and remote access capability;
- Unsurpassed efficiency values that set the industry standard.



## PUMP TECHNICAL SPECIFICATION

**Pump** Max. flow: **900 m<sup>3</sup>/h / 3960 US gpm**  
Max. head: **26 m / 85 ft / 37 PSI**  
Impeller type: **Screw impeller**  
Solids handling: **120 mm / 4.72 in**  
Temperature: **max. 40°C / 104°F**  
Wear Ring: **GG20 (0.6020)**  
Shaft: **1.4021**  
Shaft Sealing: **WC/SiC/NBR**  
O-Rings: **NBR**  
Casing: **GG25 (0.6025)**  
Impeller: **GGG60 (0.7060)**  
Suction Liner: **GG20 (0.6020)**  
Suction liner adjustable by external regulation screws.





**Electrical Motor** Power: **30 kW / 40.23 hp**  
Rated Voltage: **400/690V 50/60 Hz**  
4-pole: **1480 rpm**

---



**Priming System** Pump type: **dry claw vacuum pump**  
Air handling capacity: **60 m3/h / 35 CFM**  
Max. vacuum: **9.0 m / 30 ft**  
Electric motor: **1.3 kW / 1.74 hp**  
Floatbox: **Hot dip galvanized Steel**  
Non-return valve: **Ductile iron GJS400**  
Check valve ball: **Rubber NBR**



## ELECTRICAL MOTOR CONTROLLER OPTIONS

**Standard** Frequency converter

AEONPUMP Software  
Automatic level control  
Two float switch  
Hydrostatic level sensor \*  
SMS alarm system \*  
Online telemetry \*

\*Optional

---

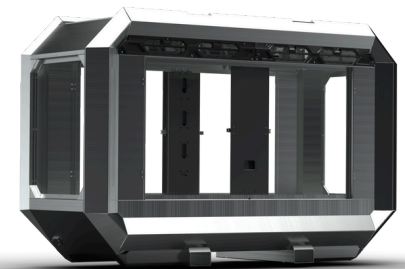


**Retro** Star Delta

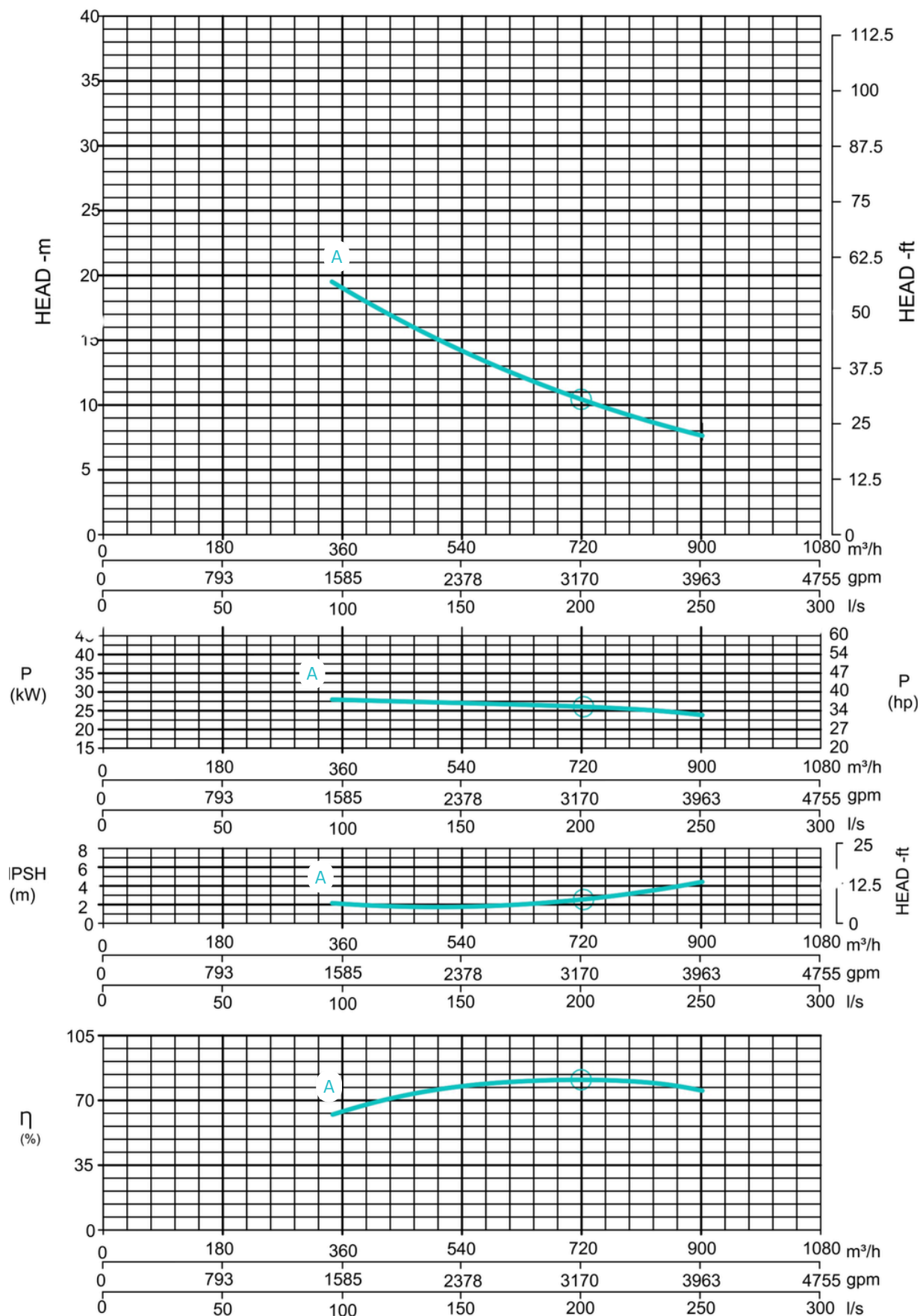
Dual float switches  
Phase control  
Hour meter  
Socket 125 A



## FRAME OPTIONS

**Silent  
Canopy**Canopy type: **Stackable**Material: **Hot dip galvanized steel**Dimensions LxWxH: **2700x1150x1820 mm /  
106.3x45.3x71.7 in**Lifting point: **Single lifting point**Forklift pockets: **Installed****Open  
Canopy**Canopy type: **Stackable**Material: **Hot dip galvanized steel**Dimensions LxWxH: **2700x1150x1820 mm /  
106.3x45.3x71.7**Lifting point: **Single lifting point**Forklift pockets: **Installed**

### Curves at Speeds: A 1480 rpm



Note: Pump power P include mechanical seal friction and bearing frame losses, from a run in bearing frame.  
(Testing according ISO 9906:2012-38)