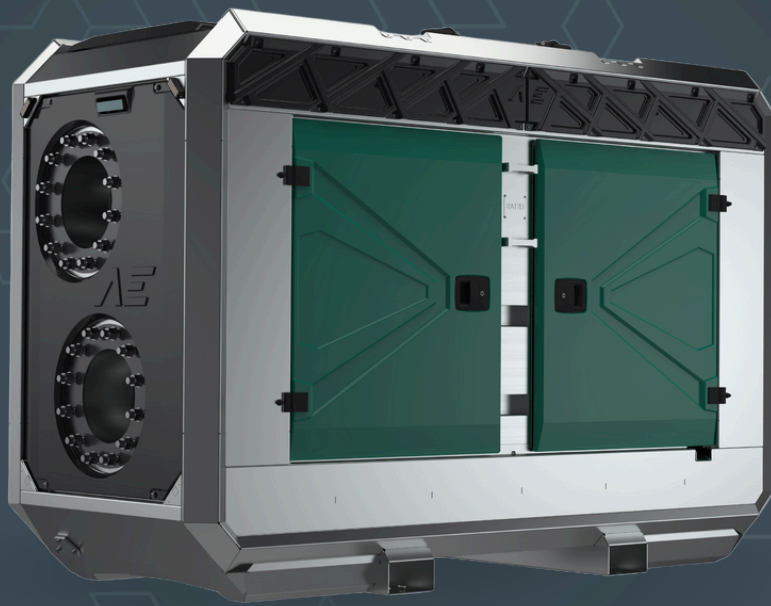


AEDONPUMP

RAPTOR 12E HEAVY



ELECTRICALLY

**DRIVEN SEWAGE
AND DEWATERING PUMP**

FEATURES AND COMPETITIVE EDGE

Type: **Raptor 12E HEAVY**
Connection size: **12 in x 12 in**

Frame LxWxH: **2700x1150x1820 mm / 106.3x45.3x71.7 in**
Dry weight: **2400 kg / 5290 lbs**

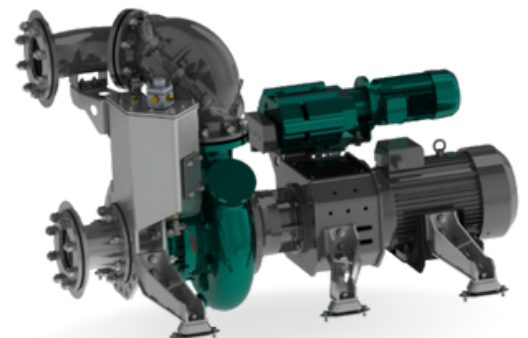
Designed for heavy duty applications.
Sewage bypass, drainage and dewatering:

- Extended maintenance intervals;
- High-grade parts of superior quality;
- Online telemetry and remote access capability;
- Unsurpassed efficiency values that set the industry standard.



PUMP TECHNICAL SPECIFICATION

Pump Max. flow: **1100 m³/h / 4840 US gpm**
Max. head: **35 m / 115 ft / 37 PSI**
Impeller type: **Screw impeller**
Solids handling: **120 mm / 4.72 in**
Temperature: **max. 40°C / max 104°F**
Wear Ring: **GG20 (0.6020)**
Shaft: **1.4021**
Shaft Sealing: **WC/SiC/NBR**
O-Rings: **NBR**
Casing: **GG25 (0.6025)**
Impeller: **GGG60 (0.7060)**
Suction Liner: **GG20 (0.6020)**
Suction liner adjustable by external regulation screws.





Electrical Motor Power: **45 kW / 60.35 hp**
Rated Voltage: **400/690V 50/60 Hz**
4-pole: **1470 rpm**



Priming System Pump type: **dry claw vacuum pump**
Air handling capacity: **60 m3/h / 35 CFM**
Max. vacuum: **9.0 m / 30 ft**
Electric motor: **1.3 kW / 1.74 hp**
Floatbox: **Hot dip galvanized Steel**
Non-return valve: **Ductile iron GJS400**
Check valve ball: **Rubber NBR**



ELECTRICAL MOTOR CONTROLLER OPTIONS

Standard Frequency converter

AEONPUMP Software
Automatic level control
Two float switch
Hydrostatic level sensor *
SMS alarm system *
Online telemetry *

*Optional



Retro Star Delta

Dual float switches
Phase control
Hour meter
Socket 125 A



FRAME OPTIONS

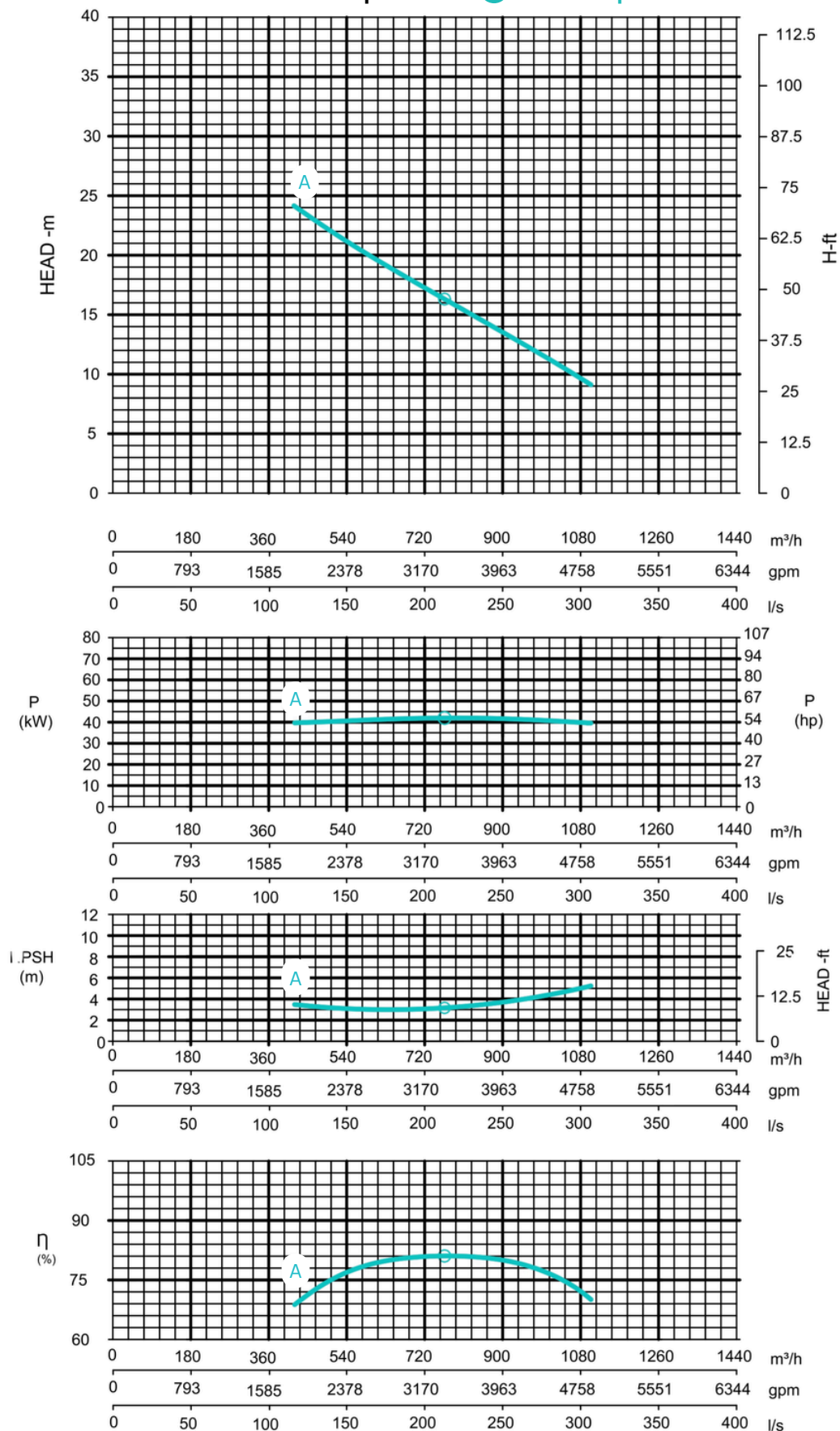
Silent Canopy Canopy type: **Stackable**
Material: **Hot dip galvanized steel**
Dimensions LxWxH: **2700x1150x1820 mm / 106.3x45.3x71.7 in**
Lifting point: **Single lifting point**
Forklift pockets: **Installed**



Open Canopy Canopy type: **Stackable**
Material: **Hot dip galvanized steel**
Dimensions LxWxH: **2700x1150x1820 mm / 106.3x45.3x71.7 in**
Lifting point: **Single lifting point**
Forklift pockets: **Installed**



Curves at Speeds: **A** 1485 rpm



Note: Pump power P include mechanical seal friction and bearing frame losses, from a run in bearing frame.
(Testing according ISO 9906:2012-38)