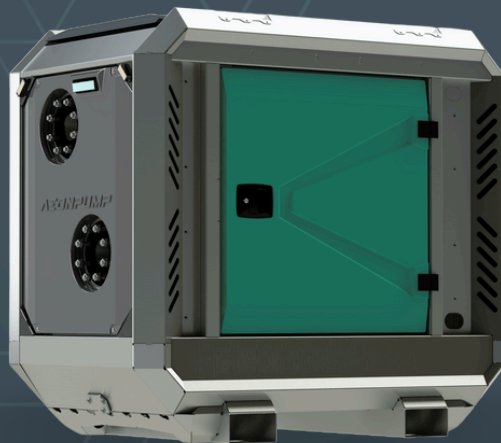


AEDONPUMP

RAPTOR 4 PLUG-IN



**DIESEL, BATTERY, ELECTRIC
DRIVEN SEWAGE
AND DEWATERING PUMP**

V1.25

FEATURES AND COMPETITIVE EDGE

Type: **Raptor 4 PLUG-IN**
Connection size: **4 in x 4 in**

Frame LxWxH: **1634x990x1482 mm**
64.3x39x58.3 in

Dry weight: **880 kg / 1940 lbs**

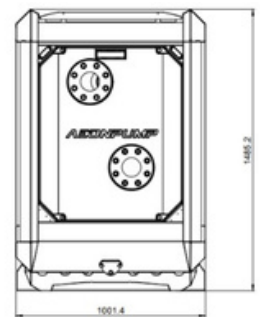
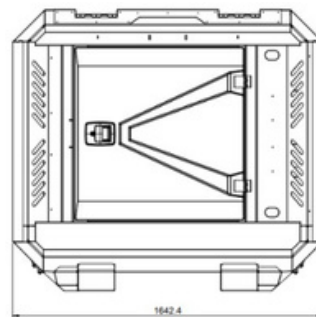
Fuel tank capacity: **200 L / 53 US gallons**

Consumption: **1.6 L/h / 0.42 gal/h**

Sound level: **54dB at 10 m/at 33 ft**

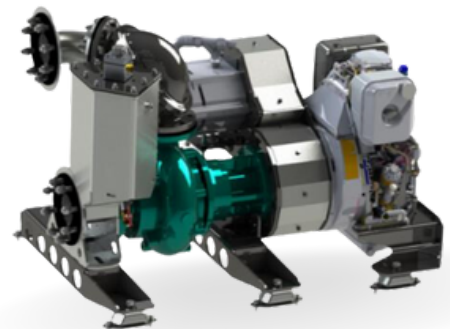
Designed for heavy duty applications.
Sewage bypass, drainage and dewatering:

- Extended maintenance intervals;
- High-grade parts of superior quality;
- Online telemetry and remote access capability;
- Unsurpassed efficiency values that set the industry standard.

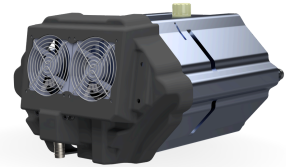


PUMP TECHNICAL SPECIFICATION

Pump Max. flow: **190 m³/h / 836 gpm**
Max. head: **19 m / 62 ft / 27 PSI**
Impeller type: **Screw impeller**
Solids handling: **75 mm / 2.95 in**
Temperature: **max. 40°C / max 104°F**
Casing: **GG25 (0.6025)**
Impeller: **GGG60 (0.7060)**
Suction Liner: **GG20 (0.6020)**
Suction liner adjustable by external regulation screws
Wear Ring: **GG20 (0.6020)**
Shaft: **1.4021**
Shaft Sealing: **WC/SiC/NBR**
O-Rings: **NBR**



Priming System Pump type: **dry claw vacuum pump**
Air handling capacity: **60 m³/h / 35 CFM**
Max. vacuum: **9.0 m / 30 ft**
Floatbox: **Hot dip galvanized Steel**
Non-return valve: **Ductile iron GJS400**
Check valve ball: **Rubber NBR**



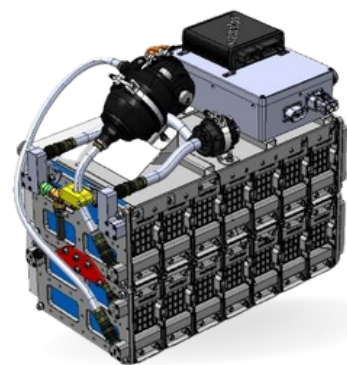
ELECTRICAL DUAL MOTOR

Standard Nominal voltage: **48V (42V/58,8V)**
Power: **5.5 kW / 7.38 hp**
Integrated frequency converter



BATTERY

Standard Module type: **LONG LIFE**
Module IP protection: **IP67 / IP6K9K**
Nominal voltage: **48V (42V/58,8V)**
Useful/embedded energy: **15 kWh/17 kWh / 20.12 hp/22.8 hp**
Charging power (standard/fast)* **6/16 kW / 8.05 hp/21.46 hp**
Cycle life **3000**
Discharging power (continuous / 2s peak)*: **24/72 kW / 32.18 hp/96.55 hp**
Running time: **10 Hours**
Charging time: **2 Hours**



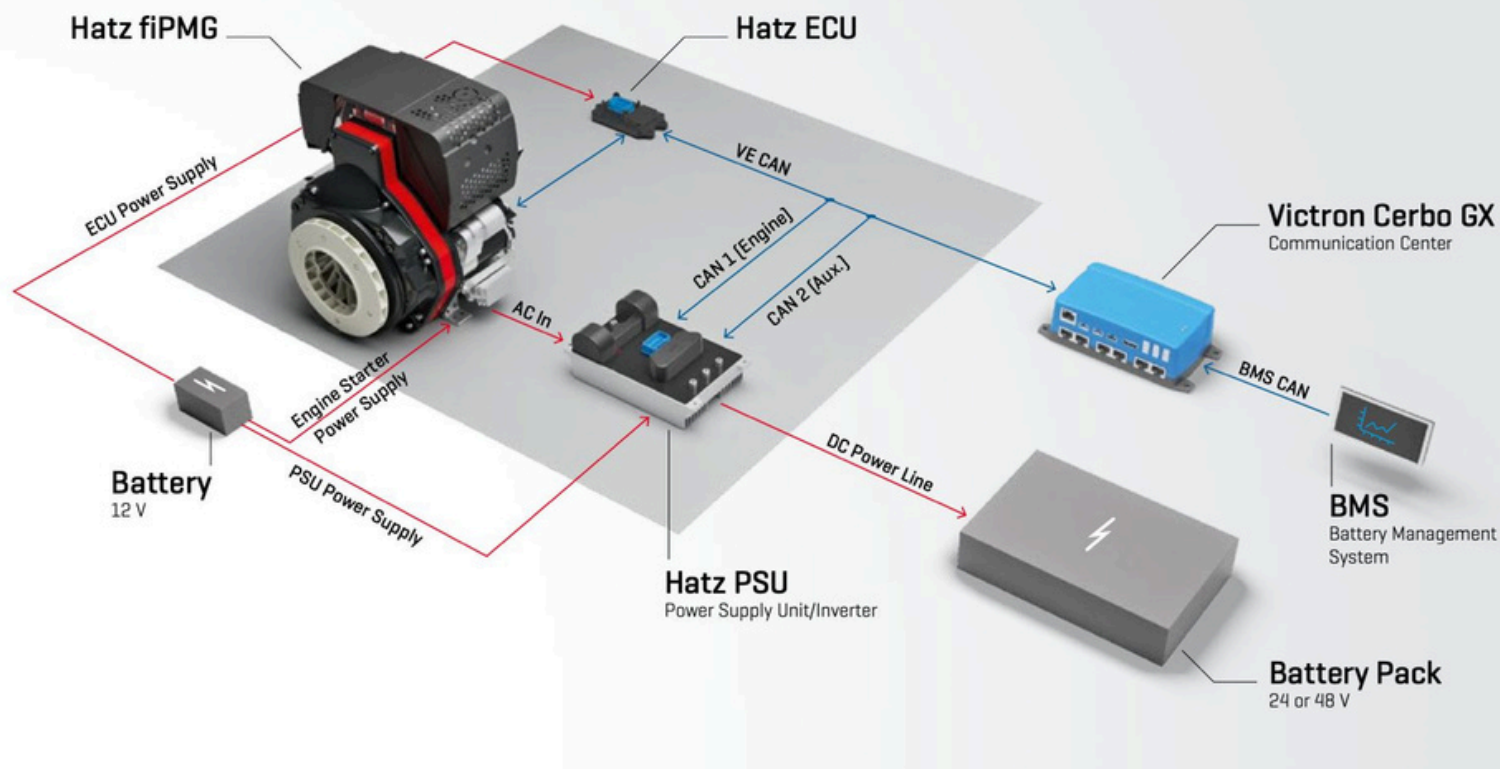
* Power depends on the outside temperature

ENGINE

Engine Model: **Hatz PMDC-56-100**
Emission standard: **Stage V / Tier 4f**
Type of voltage: **56 V**
Max current: **100 A**
Max power at 1 kW: **5.6**
Total electric efficiency: **85.5%**
Engine: **1B50E**
Speed range: **1800-3000 rpm**
Start system: **electric 12V**



VISUALS OF ENGINE



FRAME OPTIONS

Silent canopy Canopy type: **Stackable**
Material: **Hot dip galvanized Steel**
Dimensions LxWxH: **1634x990x1482 mm / 64.3x39x58.3"**
Lifting point: **Single lifting point**
Forklift pockets: **Installed**



Open canopy Canopy type: **Stackable**
Material: **Hot dip galvanized Steel**
Dimensions LxWxH: **1634x990x1482 mm 64.3x39x58.3 in**
Lifting point: **Single lifting point**
Forklift pockets: **Installed**



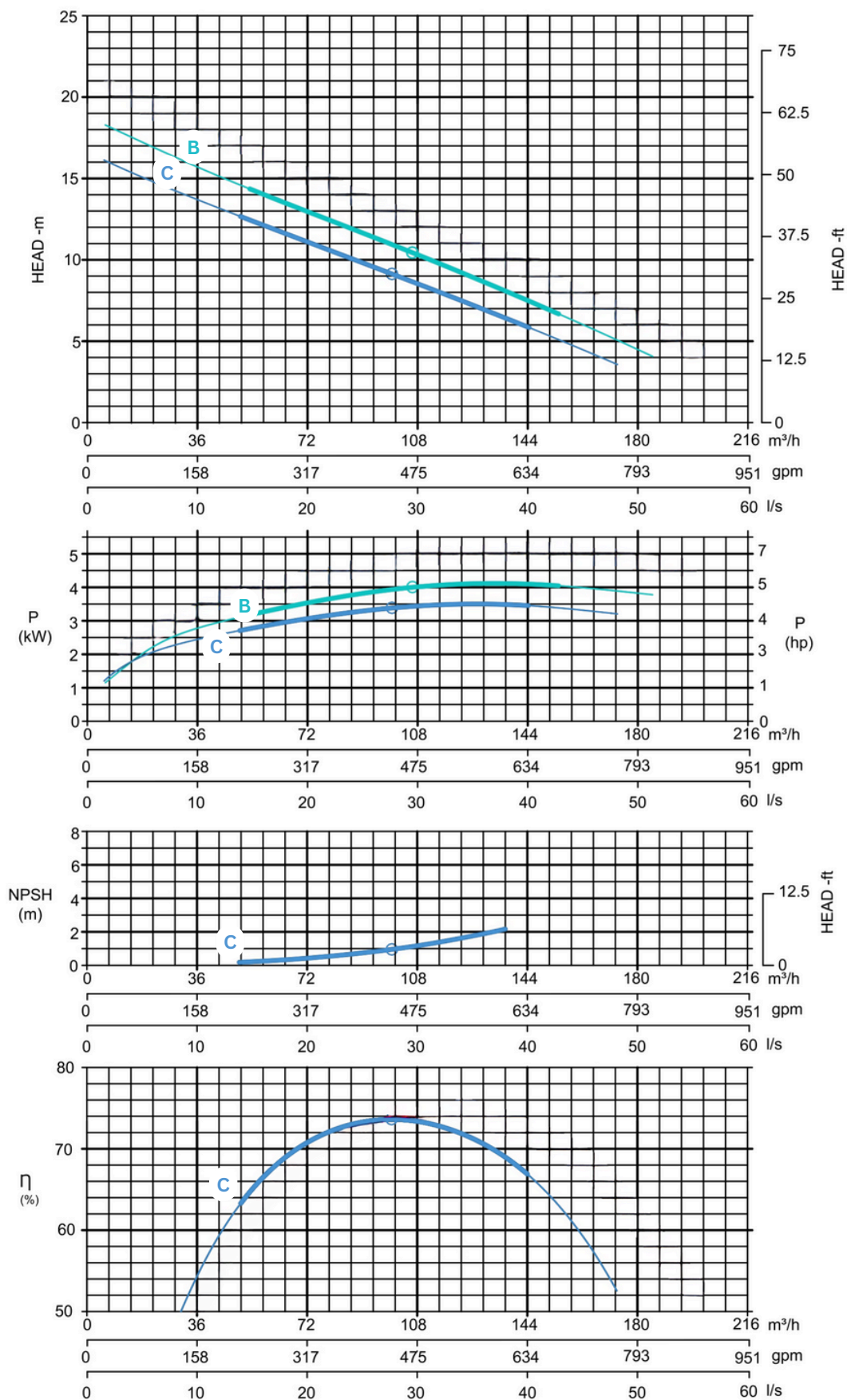
CONTROL PANEL OPTIONS

Panel AEONPUMP Software
Automatic level control
Hydrostatic level sensor*
SMS alarm system*
Online telemetry*
Dual float switch
Light Assistant*

* Optional



Curves at Speeds: **B** 1600 rpm **C** 1500 rpm



Note: Pump power P include mechanical seal friction and bearing frame losses, from a run in bearing frame.
(Testing according ISO 9906:2012-38)