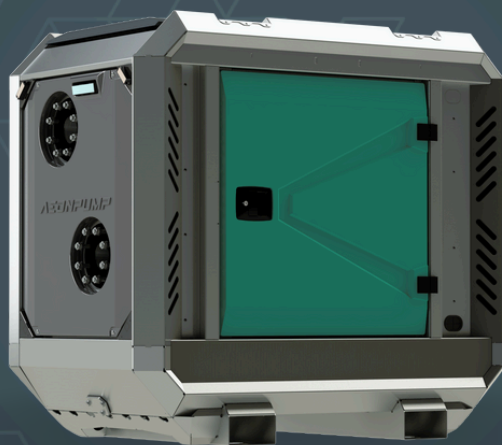


AEDONPUMP

RAPTOR 4E



ELECTRICALLY

**DRIVEN SEWAGE
AND DEWATERING PUMP**



FEATURES AND COMPETITIVE EDGE

Type: **RAPTOR 4E**

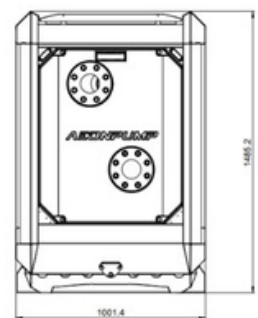
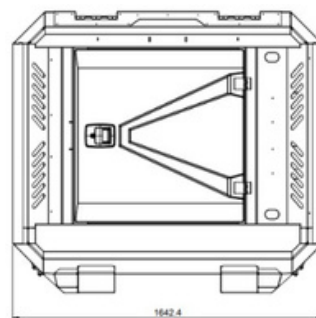
Connection size: **4 in x 4 in**

Frame LxWxH: **1634x990x1482 mm /
64.3x39x58.3 in**

Dry weight: **900 kg / 1980 lbs**

**Designed for heavy duty applications.
Sewage bypass, drainage and dewatering:**

- Extended maintenance intervals;
- High-grade parts of superior quality;
- Online telemetry and remote access capability;
- Unsurpassed efficiency values that set the industry standard.



PUMP TECHNICAL SPECIFICATION

Pump Max. flow: **145 m³/h / 638 US gpm**

Max. head: **15 m / 49 ft / 21 PSI**

Impeller type: **Screw impeller**

Solids handling: **75 mm / 2.95 in**

Temperature: **max. 40°C / 104°F**

Wear Ring: **GG20 (0.6020)**

Shaft: **1.4021**

Shaft Sealing: **WC/SiC/NBR**

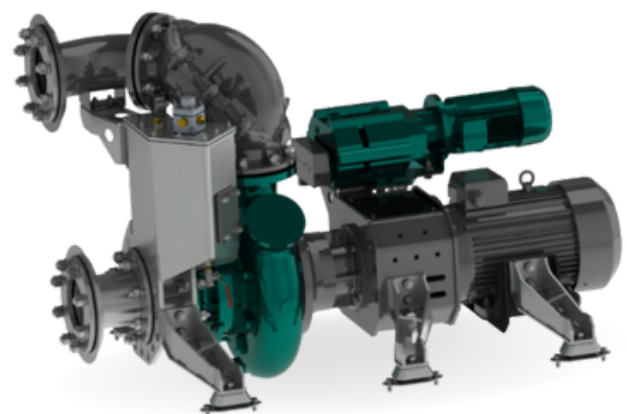
O-Rings: **NBR**

Casing: **GG25 (0.6025)**

Impeller: **GGG60 (0.7060)**

Suction Liner: **GG20 (0.6020)**

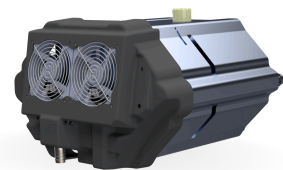
Suction liner adjustable by external regulation screws.



Electric Motor Power: **5.5 kW / 7.38 hp**
Rated Voltage: **400/690V 50/60 Hz**
Rotation speed: **1438 rpm**
Standard: **EC Directive 2005/32**



Priming System Pump type: **dry claw vacuum pump**
Air handling capacity: **60 m3/h / 35 CFM**
Max. vacuum: **9.0 m / 30 ft**
Electric motor: **1.3 kW / 1.74 hp**
Floatbox: **Hot dip galvanized Steel**
Non-return valve: **Ductile iron GJS400**
Check valve ball: **Rubber NBR**



ELECTRICAL MOTOR CONTROLLER OPTIONS

Standard Frequency converter

AEONPUMP Software
Automatic level control
Two float switch
Hydrostatic level sensor *
SMS alarm system *
Online telemetry *

*Optional

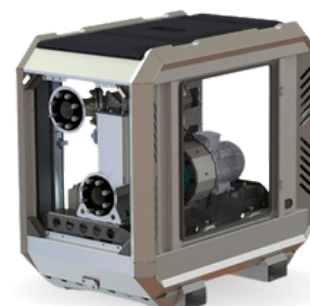


Retro Doll

Dual float switches
Phase control
Socket 32 A



FRAME OPTIONS

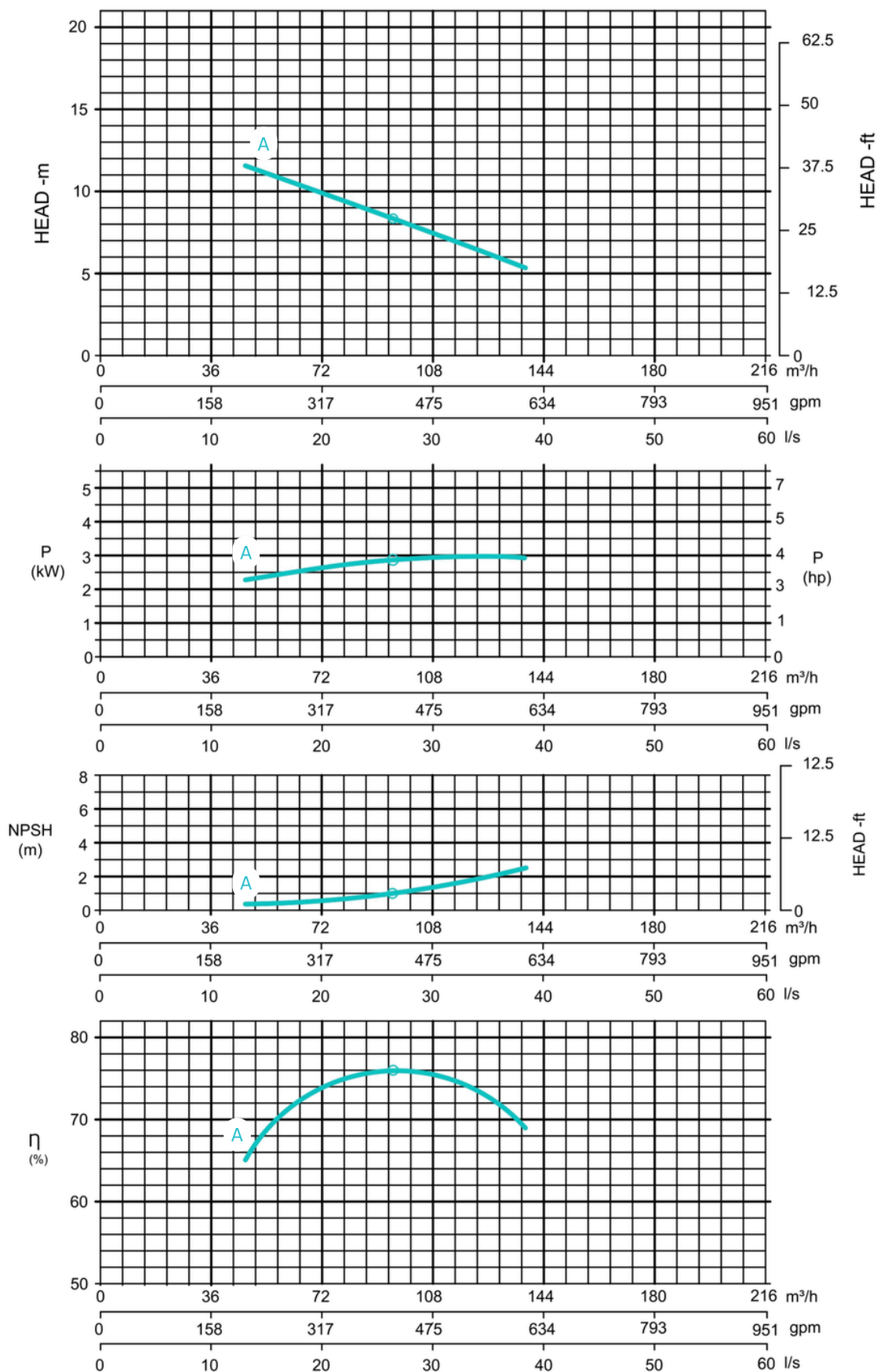
**Silent
Canopy**Canopy type: **Stackable**Material: **Hot dip galvanized steel**Dimensions LxWxH: **1634x990x1482 mm /
64.3x39x58.3 in**Lifting point: **Single lifting point**Forklift pockets: **Installed****Open
Canopy**Canopy type: **Stackable**Material: **Hot dip galvanized steel**Dimensions LxWxH: **1634x990x1482 mm /
64.3x39x58.3 in**Lifting point: **Single lifting point**Forklift pockets: **Installed**



Curves at Speeds:

A

1438 rpm



Note: Pump power P include mechanical seal friction and bearing frame losses, from a run in bearing frame.
(Testing according ISO 9906:2012-38)