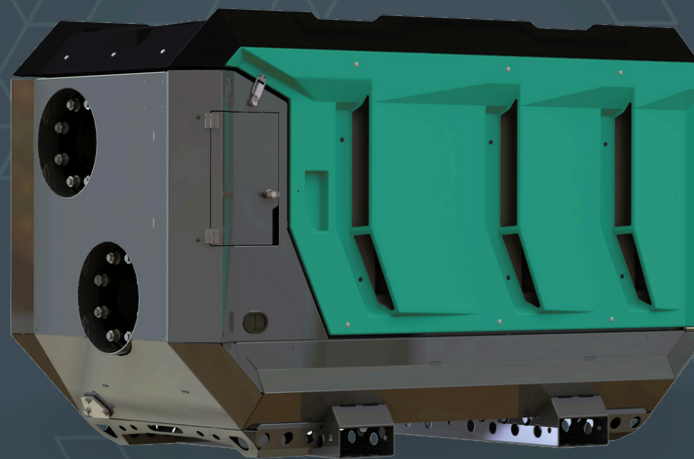


AEDONPUMP

RAPTOR 6D LITE



DIESEL

**DRIVEN SEWAGE
AND DEWATERING PUMP**

FEATURES AND COMPETITIVE EDGE

Type: **Raptor 6D Lite**
 Connection size: **6 in x 6 in**

Frame LxWxH: **2015x1033x1254 mm / 79.33x40.67x49.37 in**

Dry weight: **830 kg / 1830 lbs**

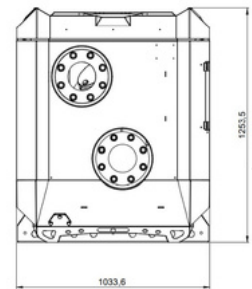
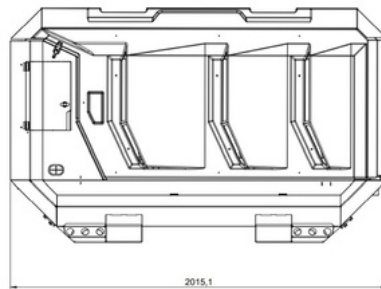
Fuel tank capacity: **150 L / 40 US gal**

Consumption: **4.6 L/h / 1.2 gal/h**

Sound level: **63 dB at 10 m/ at 33 ft**

Designed for heavy duty applications.
Sewage bypass, drainage and dewatering:

- Extended maintenance intervals;
- High-grade parts of superior quality;
- Online telemetry and remote access capability;
- Unsurpassed efficiency values that set the industry standard.



PUMP TECHNICAL SPECIFICATION

Pump Max. flow: **430 m³/h / 1892 US gpm**

Max. head: **33 m / 108 ft / 47 PSI**

Impeller type: **Screw impeller**

Solids handling: **100 mm / 3.94 in**

Temperature: **max. 40°C / max 104°F**

Casing: **GG25 (0.6025)**

Impeller: **GGG60 (0.7060)**

Wear ring: **GG20 (0.6020)**

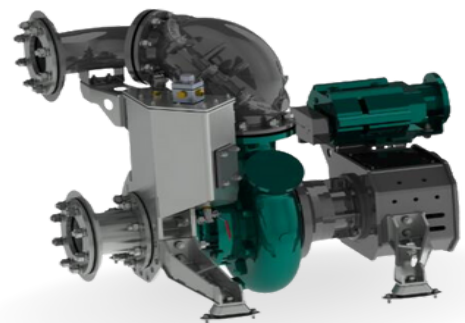
Shaft: **1.4021**

Shaft sealing: **WC/SiC/NBR**

O-Rings: **NBR**

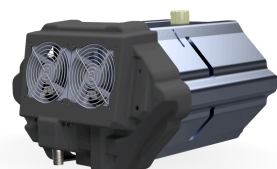
Suction Liner: **GG20 (0.6020)**

Suction liner adjustable by external regulation screws





Priming System Pump type: **dry claw vacuum pump**
Air handling capacity: **60 m³/h / 35 CFM**
Max. vacuum: **9.0 m / 30 ft**
Floatbox: **Hot dip galvanized Steel**
Non-return valve: **Ductile iron GJS400**
Check valve ball: **Rubber NBR**



ENGINE OPTIONS

Standard Model: **Hatz 3H50T**
Emission standard: **Stage V/ Tier 4f**
Cylinders: **3**
Displacement litres: **1.464 / 89.34 cu.in.**
Bore and stroke: **84 x 88 mm / 3.31x3.46 in**
Maximum power: **18.4 kW/ 24.7 hp @1600 rpm**
Variable speed: **1500 - 1600 rpm**
Combustion system: **Direct injection with Bosch off-highway common-rail**



FRAME OPTIONS

Silent canopy Canopy type: **Non-stackable**
Dimensions LxWxH: **2015x1033x1254 mm*** / **79.33x40.67x49.37 in**

Lifting point: **Single lifting point**

Forklift pockets: **Installed**

*Trailer is not included

**Pump is designed to be installed on the trailer



Trailer On request



Lifting Hook On request



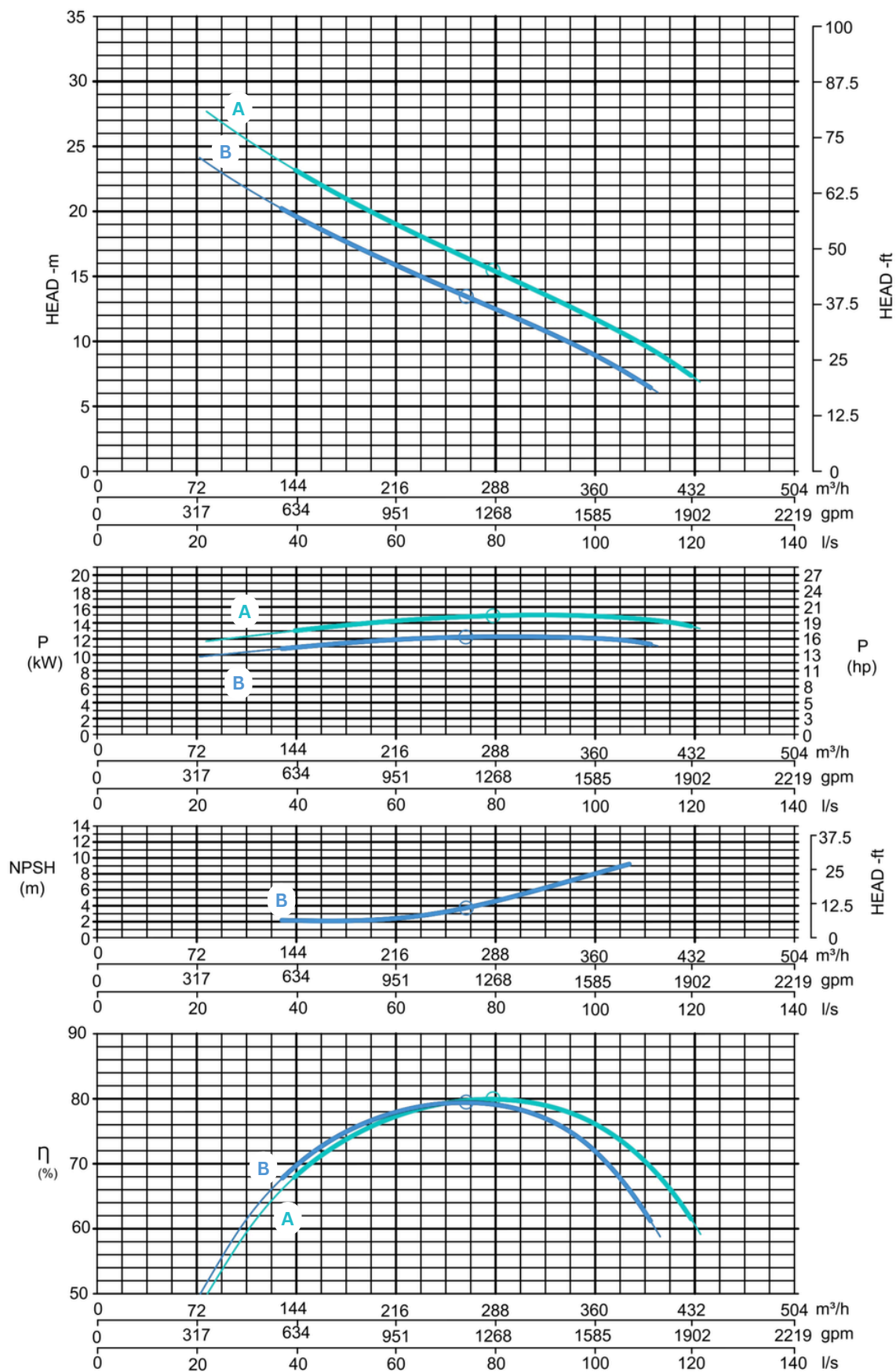
CONTROL PANEL OPTIONS

Standard 3.5" digital panel
Ignition switch
Hour meter
Dual float switch



Curves at Speeds:

A 1600 rpm **B** 1500 rpm



Note: Pump power P include mechanical seal friction and bearing frame losses, from a run in bearing frame.
(Testing according ISO 9906:2012-38)