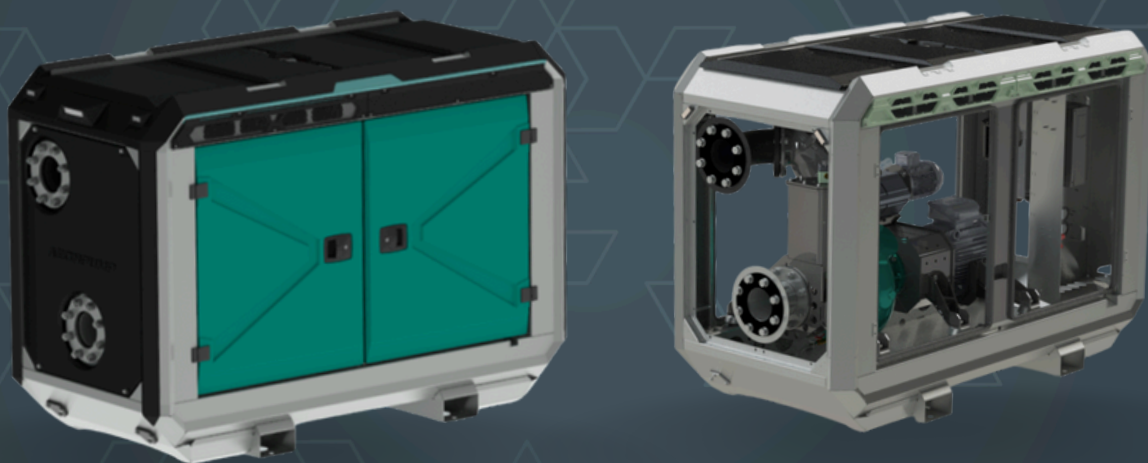


AEDONPUMP

RAPTOR 6E



ELECTRICALLY

**DRIVEN SEWAGE
AND DEWATERING PUMP**

FEATURES AND COMPETITIVE EDGE

Type: **RAPTOR 6E**

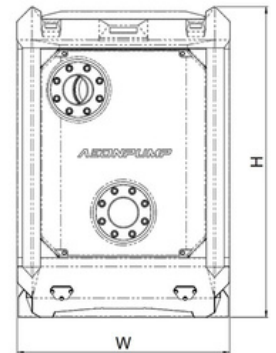
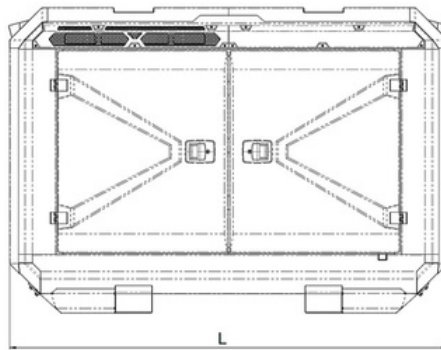
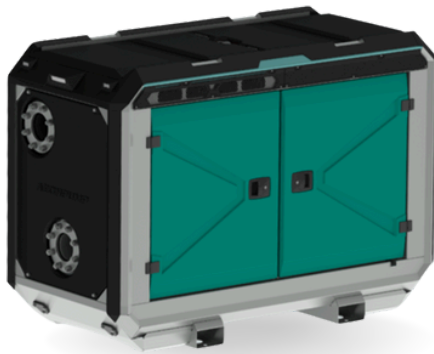
Connection size: **6 in x 6 in**

Frame LxWxH: **2299x1100x1601 mm /
90.51x43.31x63.03 in**

Dry weight: **1150 kg / 2540 lbs**

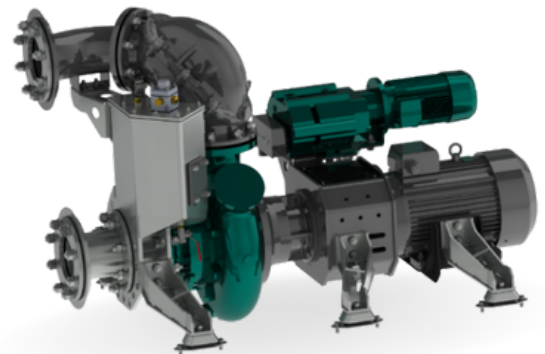
**Designed for heavy duty applications.
Sewage bypass, drainage and dewatering:**

- Extended maintenance intervals;
- High-grade parts of superior quality;
- Online telemetry and remote access capability;
- Unsurpassed efficiency values that set the industry standard.



PUMP TECHNICAL SPECIFICATION

Pump Pump type: **E06R-HMN1R**
Max. flow: **380 m³/h / 1672 US gpm**
Max. head: **26 m / 85 ft / 37 PSI**
Impeller type: **Screw impeller**
Solids handling: **100 mm / 3.94 in**
Temperature: **max. 40 °C / 104°F**
Wear Ring: **GG20 (0.6020)**
Shaft: **1.4021**
Shaft Sealing: **WC/SiC/NBR**
O-Rings: **NBR**
Casing: **GG25 (0.6025)**
Impeller: **GGG60 (0.7060)**
SuctionLiner: **GG20 (0.6020)**
Suction liner adjustable by external regulation screws.

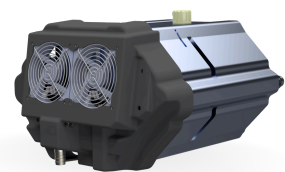




Electrical Motor Power: **15 kW / 20.12 hp**
Rated Voltage: **400/690V 50/60 Hz**
4-pole: **1474 RPM**



Priming System Pump type: **dry claw vacuum pump**
Air handling capacity: **60 m3/h / 35 CFM**
Max. vacuum: **9.0 m / 30 ft**
Electric motor: **1.3 kW / 1.74 hp**
Floatbox: **Hot dip galvanized Steel**
Non-return valve: **Ductile iron GJS400**
Check valve ball: **Rubber NBR**



ELECTRICAL MOTOR CONTROLLER OPTIONS

Standard Frequency converter

AEONPUMP Software
Automatic level control
Dual float switch
Hydrostatic level sensor *
SMS alarm system *
Online telemetry *

*Optional



Retro Star Delta

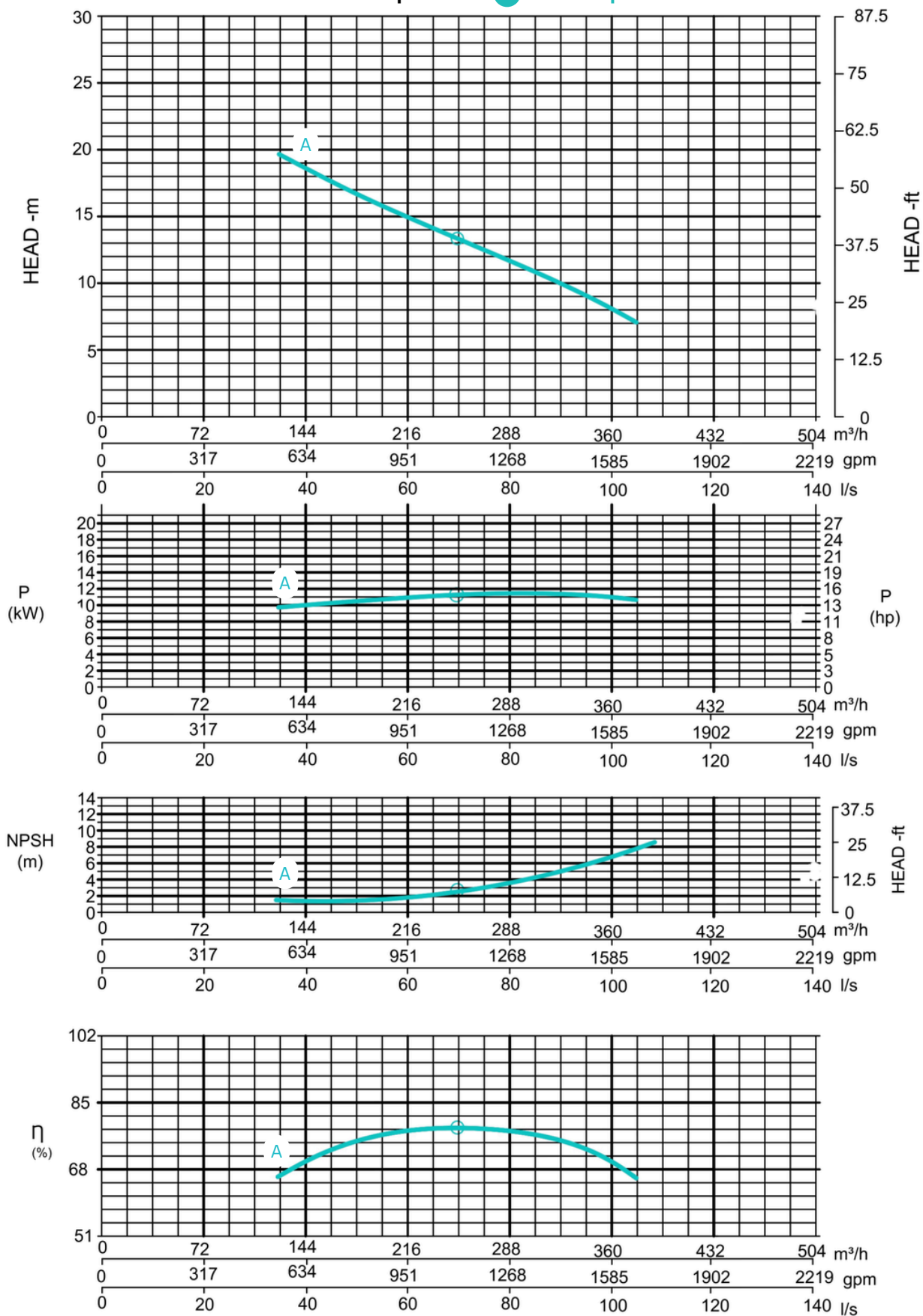
Dual float switch
Phase control
Hour meter
Socket 32 A



FRAME OPTIONS

**Silent
Canopy**Canopy type: **Stackable**Material: **Hot dip galvanized steel**Dimensions LxWxH: **2299x1100x1601 mm /****90.51x43.31x63.03 in**Lifting point: **Single lifting point**Forklift pockets: **Installed****Open
Canopy**Canopy type: **Stackable**Material: **Hot dip galvanized steel**Dimensions LxWxH: **2299x1100x1601 mm /****90.51x43.31x63.03 in**Lifting point: **Single lifting point**Forklift pockets: **Installed**

Curves at Speeds: **A** 1474 rpm



Note: Pump power P include mechanical seal friction and bearing frame losses, from a run in bearing frame.
(Testing according ISO 9906:2012-38)